

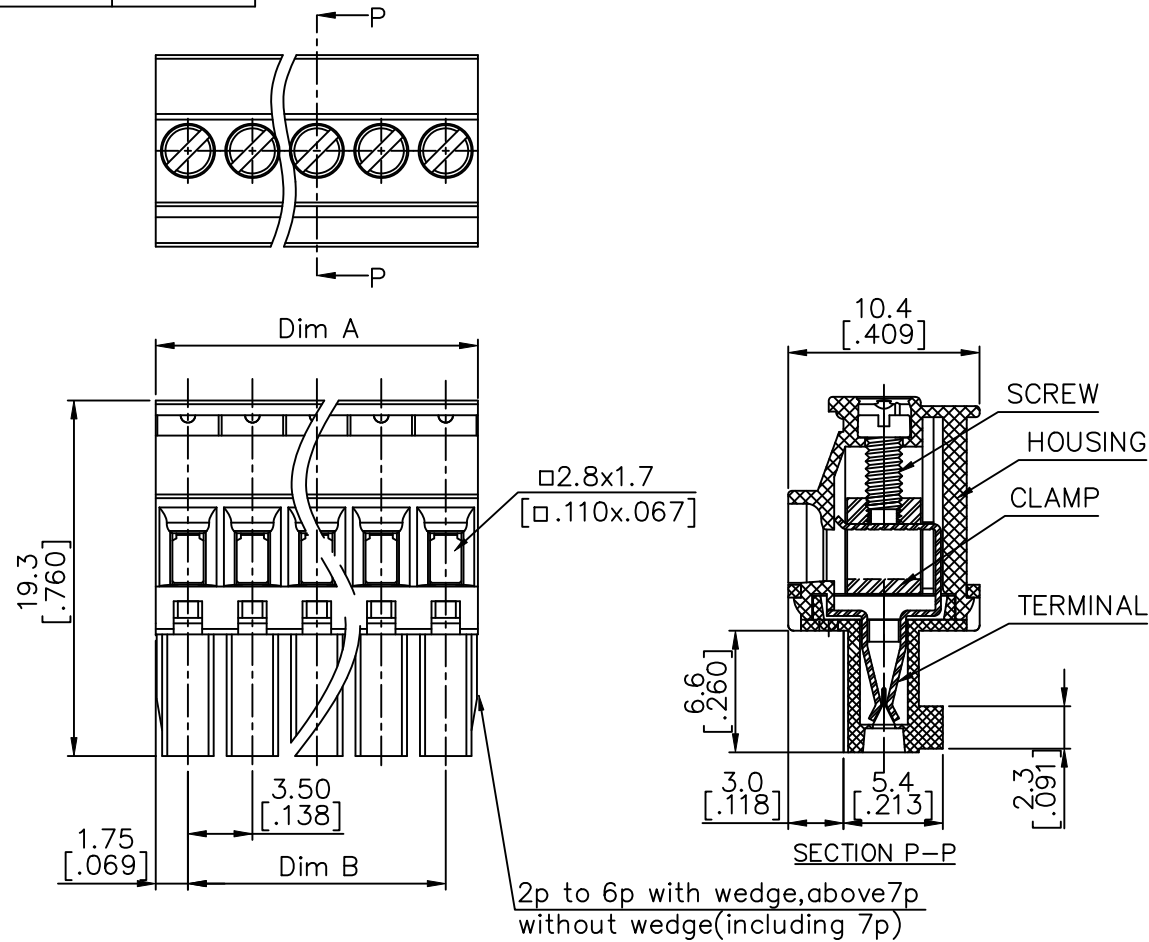
- 1 : STANDARD PRODUCT
W/ BOX PACKING

NOTES:

1. MATERIALS
 - 1-1 HOUSING: THERMALPLASTIC RESIN, UL 94V-0 RATED.
 - 1-2 SCREW: STEEL, ZINC PLATED.
 - 1-3 CLAMP: COPPER ALLOY, NICKEL PLATED.
 - 1-4 TERMINAL: COPPER ALLOY, TIN PLATED.
2. PRODUCT SPECIFICATION REFER TO FCI GS-12-625.
3. PRODUCT PACKING SPECIFICATION REFER TO FCI GS-14-1394.
4. FCI, SAFETY CERTIFICATE LOGO AND SERIES NAME TO BE SHOWN ON PRODUCT SURFACE.
5. THE PRODUCTS WHERE THE PART NUMBER END IN "LF" MEET THE EUROPEAN UNION DIRECTIVE AND OTHER COUNTRY REGULATIONS AS DESCRIBED IN GS-22-008.

Printed: Sep 23, 2011

PRODUCT NUMBER	SERIES NAME	PITCH
20020010-CXXXXXXLF	02-350	3.50 mm

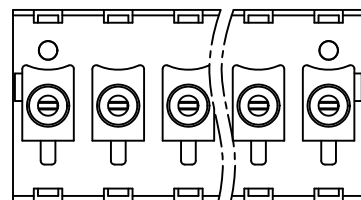
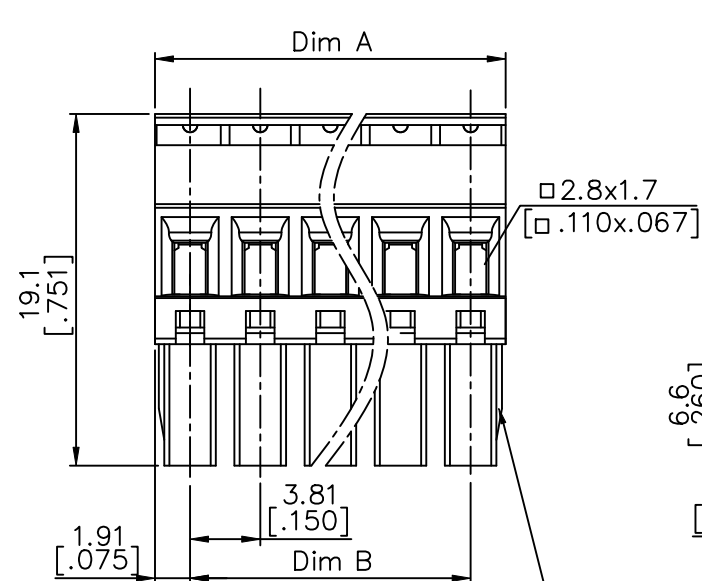
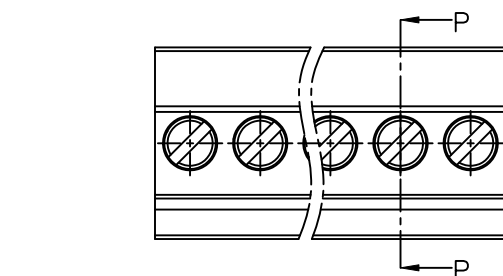


N = Number of poles
Dim A = $N \times 3.5$ [.138]
Dim B = $(N-1) \times 3.5$ [.138]

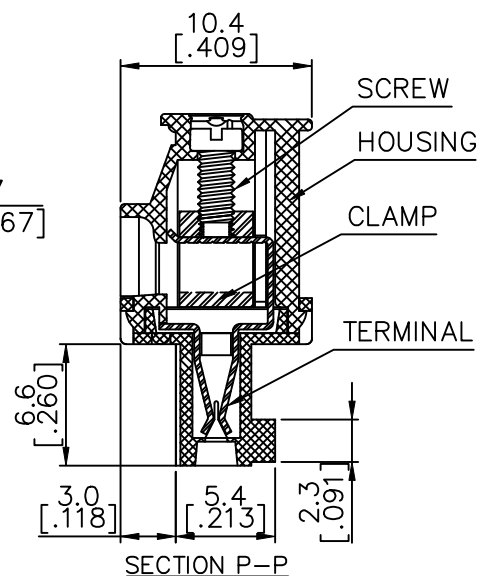
POLES	TOLERANCE
2-6p	± 0.15 [.006]
7-12p	± 0.20 [.008]
13-18p	± 0.25 [.010]
19-24p	± 0.30 [.012]

mat'l. code				surface ASME Y14.5 ✓	tolerance ASME Y14.5	projection MM [INCH]	product family TERMINAL BLOCK
ltr	ecn no	dr	date	tolerances unless otherwise specified			title
F				angles X $\pm 1^\circ$	X ± 0.5 X.X ± 0.3 X.XX ± 0.1	scale	TERMINAL BLOCK PLUGGABLE PLUG, BACK SIDE HOOK
		dr	JASON HSU	120909			dwg no
		enr	JASON HSU	120909			sheet 2 of 5
		chr	GARY HSIEH	120909			size
		appd	JOSEPH HSIA	120909			A4
sheet index	revision sheet						type
							CUSTOMER Drawing

PRODUCT NUMBER	SERIES NAME	PITCH
20020010-DXXXXXXLF	02-381	3.81 mm



2p to 6p with wedge, above 7p
without wedge (including 7p)

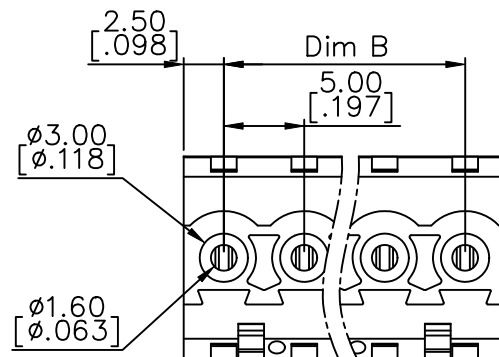
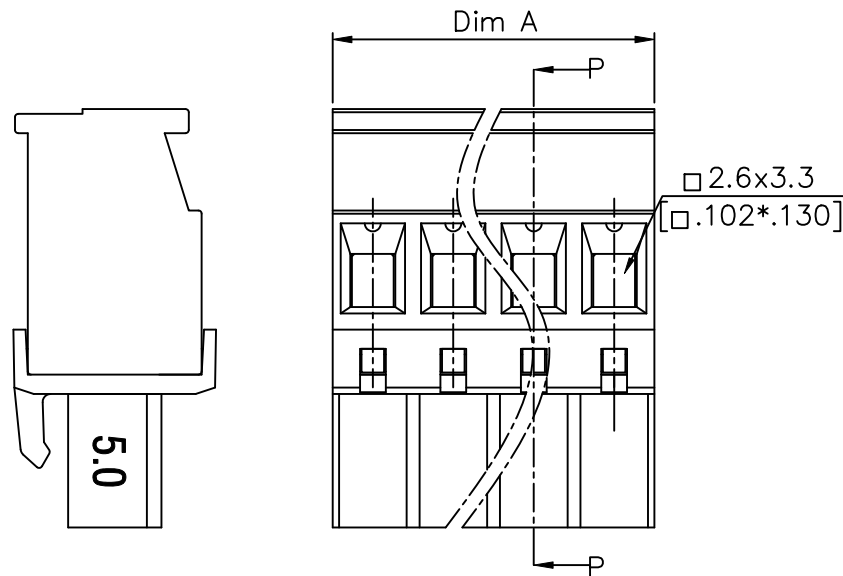
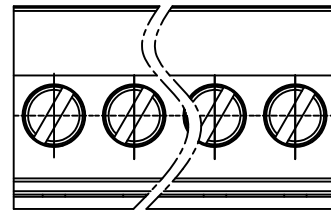


N = Number of poles
Dim A = $N \times 3.81$ [0.150]
Dim B = $(N-1) \times 3.81$ [0.150]

POLES	TOLERANCE
2-6p	± 0.15 [0.006]
7-12p	± 0.20 [0.008]
13-18p	± 0.25 [0.010]
19-24p	± 0.30 [0.012]

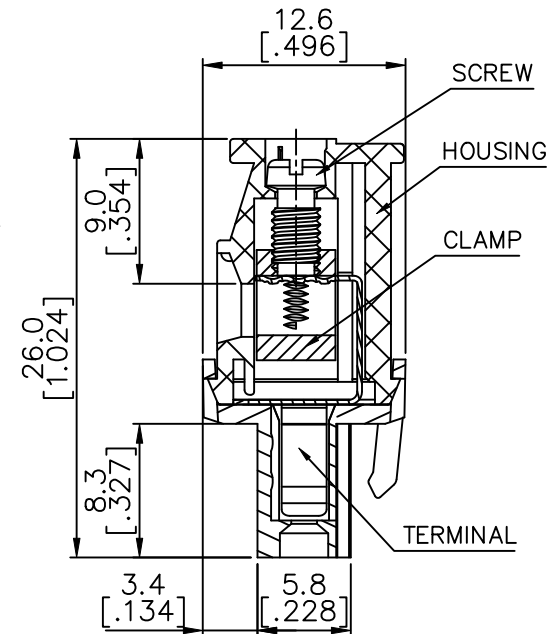
mat'l. code				surface ASME Y14.5 ✓	tolerance ASME Y14.5	projection MM [INCH]	product family TERMINAL BLOCK
ltr	ecn no	dr	date	tolerances unless otherwise specified			title
F				angles	X.±0.5 X.X±0.3		TERMINAL BLOCK
				X*±1°	X.XX±0.1	scale	PLUGGABLE PLUG, BACK SIDE HOOK
		dr	JASON HSU	120909		FCI	dwg no
		enr	JASON HSU	120909			sheet 3 of 5 size
		chr	GARY HSIEH	120909			20020010
		appd	JOSEPH HSIA	120909			A4
sheet index	revision sheet					type	CUSTOMER Drawing

PRODUCT NUMBER	SERIES NAME	PITCH
20020010-GXXXXXXLF	02-500	5.00 mm

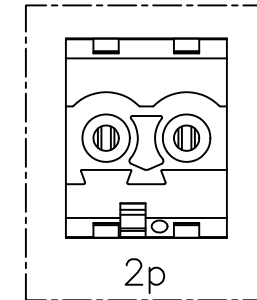


N = Number of poles
 Dim A = $N \times 5.0$ [.197]
 Dim B = $(N-1) \times 5.0$ [.197]

POLES	TOLERANCE
2-6p	± 0.15 [.006]
7-12p	± 0.25 [.010]
13-18p	± 0.30 [.012]
19-24p	± 0.40 [.016]

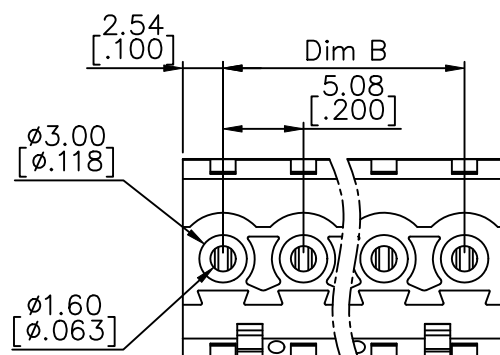
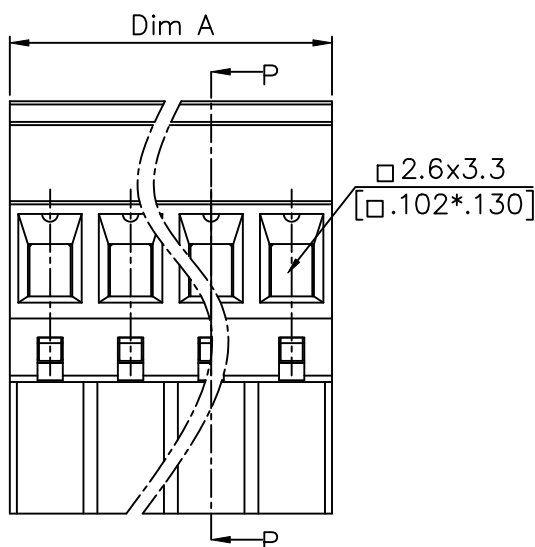
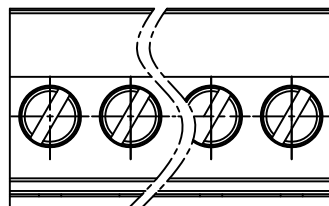


SECTION P-P



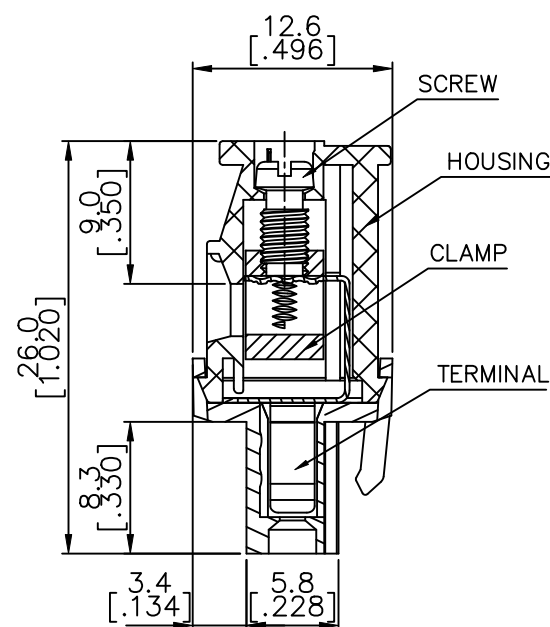
mat'l. code				surface ASME Y14.5 ✓	tolerance ASME Y14.5	projection MM [INCH]	product family TERMINAL BLOCK
ltr	ecn no	dr	date	tolerances unless otherwise specified			title
F				angles	X.±0.5 X.X±0.3 X.XX±0.1	MM [INCH]	TERMINAL BLOCK
				dr	JASON HSU 120909	scale	PLUGGABLE PLUG, BACK SIDE HOOK
				enr	JASON HSU 120909		sheet 4 of 5
				chr	GARY HSIEH 120909		20020010 A4
				appd	JOSEPH HSIA 120909		type CUSTOMER Drawing
sheet index	revision sheet						

PRODUCT NUMBER	SERIES NAME	PITCH
20020010-HXXXXXXLF	02-508	5.08 mm

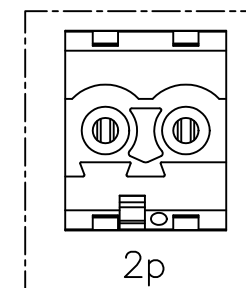


N = Number of poles
Dim A = $N \times 5.08$ [.200]
Dim B = $(N-1) \times 5.08$ [.200]

POLES	TOLERANCE
2-6p	± 0.15 [.006]
7-12p	± 0.25 [.010]
13-18p	± 0.30 [.012]
19-24p	± 0.40 [.016]



SECTION P-P



mat'l. code				surface ASME Y14.5 ✓	tolerance ASME Y14.5	projection MM [INCH]	product family TERMINAL BLOCK	
ltr	ecn	no	dr	date			title	
F							TERMINAL BLOCK PLUGGABLE PLUG, BACK SIDE HOOK	
				angles	$X \pm 0.5$	scale	dwg no	
				$X \pm 1^\circ$	$X.X \pm 0.3$		sheet 5 of 5 size	
					$X.XX \pm 0.1$	FCI	20020010	
			dr	JASON HSU	120909		A4	
			enr	JASON HSU	120909		type	
			chr	GARY HSIEH	120909		CUSTOMER Drawing	
			appd	JOSEPH HSIA	120909			
sheet index	revision sheet							

Mouser Electronics

Authorized Distributor

Click to View Pricing, Inventory, Delivery & Lifecycle Information:

Amphenol:

[20020010-G061B01LF](#) [20020010-G021B01LF](#) [20020010-H041B01LF](#) [20020010-H101B01LF](#) [20020010-G031B01LF](#) [20020010-D021B01LF](#) [20020010-H081B01LF](#) [20020010-G041B01LF](#) [20020010-H031B01LF](#) [20020010-G101B01LF](#) [20020010-H021B01LF](#) [20020010-G081B01LF](#) [20020010-H061B01LF](#) [20020010-H091B01LF](#) [20020010-D031BC1LF](#) [20020010-G161B61LF](#) [20020010-D062B01LF](#) [20020010-G032B01LF](#) [20020010-G082B01LF](#)

FCI / Amphenol:

[20020010-G122B11LF](#) [20020010-H041BA1LF](#)