

PRODUCT NUMBER  
20020009-XXXXXXLF

20020009-

PITCH  
C : 3.50 mm  
D : 3.81 mm  
G : 5.00 mm  
H : 5.08 mm



## POLES

02: 2 POLES  
03: 3 POLES  
04: 4 POLES  
:  
:  
:  
24: 24 POLES

LF : DENOTES ROHS COMPATIBLE



1 : STANDARD PRODUCT  
W/ BOX PACKING

## SCREW CODE

CODE	SCREW TYPE	AVAILABILITY
A	-/+ 	ON REQUEST ONLY
B	- 	STANDARD

ALL FLANGE SCREWS ARE ONLY AVAILABLE IN +/-  
COMBINATION SCREW TYPES.

PROPERTY TABLE

FCI SERIES NAME		02-350	02-381	02-500	02-508	
PITCH (mm)		3.50	3.81	5.00	5.08	
VOLTAGE RATING (VAC)		300	300	300	300	
CURRENT RATING (A)	cULus	8	8	12	12	
	VDE	10	10	NA	NA	
APPLICABLE WIRE RANGE (AWG)	1-WIRE	16~28	16~28	12~24	12~24	
	2-WIRE	20	20	18	18	
WIRE CROSS SECTION (mm <sup>2</sup> )	SOLID	1-WIRE	1.5	1.5	2.5	
		2-WIRE	0.5	0.5	1.0	1.0
	STRANDED	1-WIRE	1.5	1.5	2.5	2.5
		2-WIRE	0.75	0.75	1.5	1.5
OPENING CONTACT HOUSING(mm <sup>2</sup> )		2.8x1.7	2.8x1.7	2.6x3.3	2.6x3.3	
WIRE STRIP LENGTH(mm)		6~7	6~7	6~7	6~7	
TORQUE +/–10% (N-m/Lb-in)		0.19/1.7	0.19/1.7	0.4/3.5	0.4/3.5	
SCREW		M2x0.4	M2x0.4	M3x0.5	M3x0.5	
WITHSTANDING VOLTAGE (kV)	cULus	1.6	1.6	1.6	1.6	
	VDE	2.5	2.5	NA	NA	
OPERATING TEMP. (°C)		–40~+115	–40~+115	–40~+115	–40~+115	
POLES AVAILABLE		02~24	02~24	02~24	02~24	
SAFETY CERTIFICATE						

## HOUSING CODE

CODE	COLOR	AVAILABILITY
1	GREEN(RAL 6018/T)	STANDARD
2	BLACK	ON REQUEST ONLY
3	GREY(RAL 7004/P)	ON REQUEST ONLY
4	BLUE(RAL 5015/A)	ON REQUEST ONLY

## NOTES:

## 1. MATERIALS

- 1-1 HOUSING: THERMALPLASTIC RESIN, UL 94V-0 RATED.
- 1-2 SCREW AND FLANGE SCREW: STEEL, ZINC PLATED.
- 1-3 CLAMP: COPPER ALLOY, NICKEL PLATED.
- 1-4 TERMINAL: COPPER ALLOY, TIN PLATED.


## 2. PRODUCT SPECIFICATION REFER TO FCI GS-12-625.

## 3. BOXED PACKAGING,

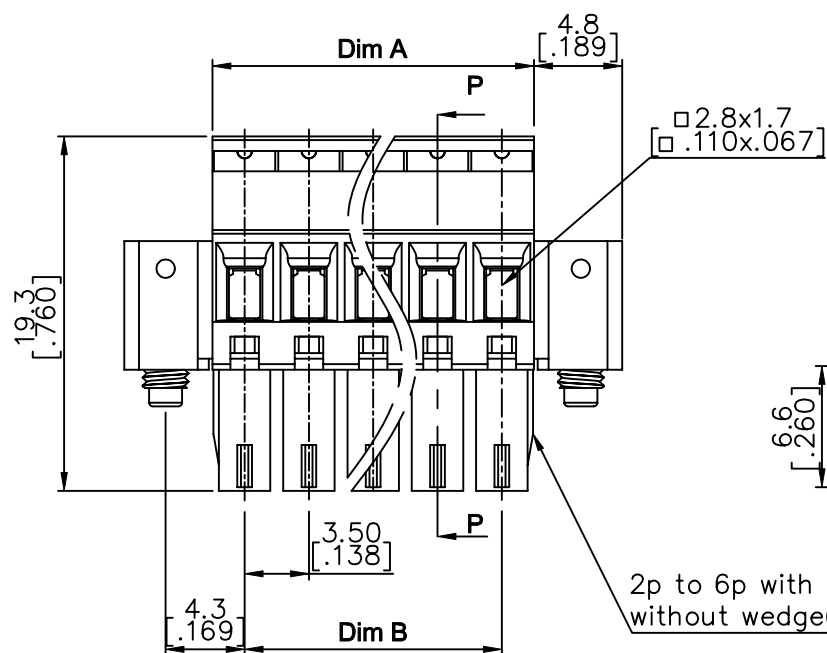
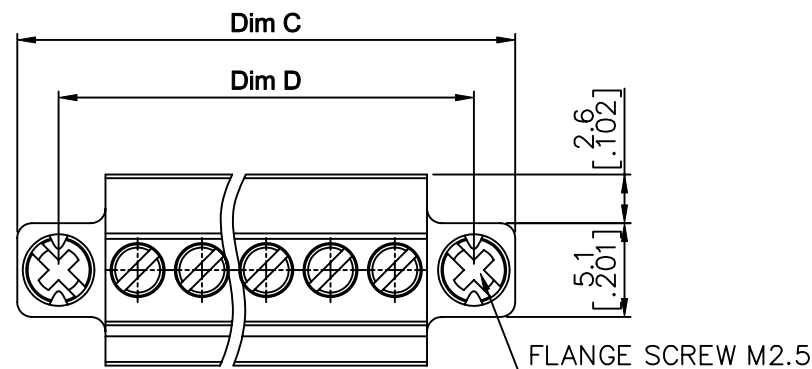
DETAILED PRODUCT PACKING SPECIFICATION REFER TO FCI GS-14-1394.

## 4. FCI, SAFETY CERTIFICATE LOGO AND SERIES NAME TO BE SHOWN ON PRODUCT SURFACE.

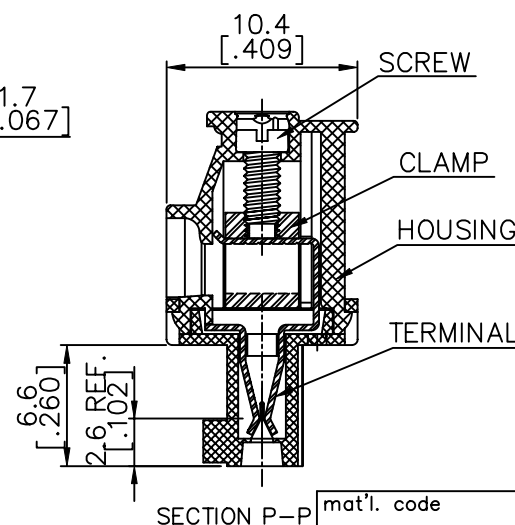
## 5. THE PRODUCTS WHERE THE PART NUMBER END IN "LF" MEET THE EUROPEAN UNION DIRECTIVE AND OTHER COUNTRY REGULATIONS AS DESCRIBED IN GS-22-008.

mat'l. code				surface ASME Y14.5	tolerance ASME Y14.5	projection 	product family TERMINAL BLOCK
ltr	ecn no	dr	date	tolerances unless otherwise specified			title
A	T10-0062	WL	050710	angles	X.±0.5[.020]	MM	TERMINAL BLOCK
B	T10-0127	WL	080910	to 1°	X.X±0.3[.012]	INCH	PLUGGABLE PLUG, SIGNAL, ENTRYSIDE HOOK
C	T10-0140	WL	090310	X'±1°	X.XX±0.1[.004]	scale	W/FLANGE
D	T10-0155	WL	093010	dr	WENDY CHEN	042310	sheet 1 of 5
E	T10-0187	WL	121410	engr	JASON HSU	042310	size
F	T11-0013	WL	040811	chr	GARY HSIEH	042310	20020009
G	T-004860	WL	080411	appd	JOSEPH HSIA	042310	A4
sheet	revision	G	G	G	G	G	type
index	sheet	1	2	3	4	5	CUSTOMER Drawing

PRODUCT NUMBER	SERIES NAME	PITCH
20020009-CXXXXXL	02-350	3.50 mm



2p to 6p with wedge, above 7p without wedge (including 7p)



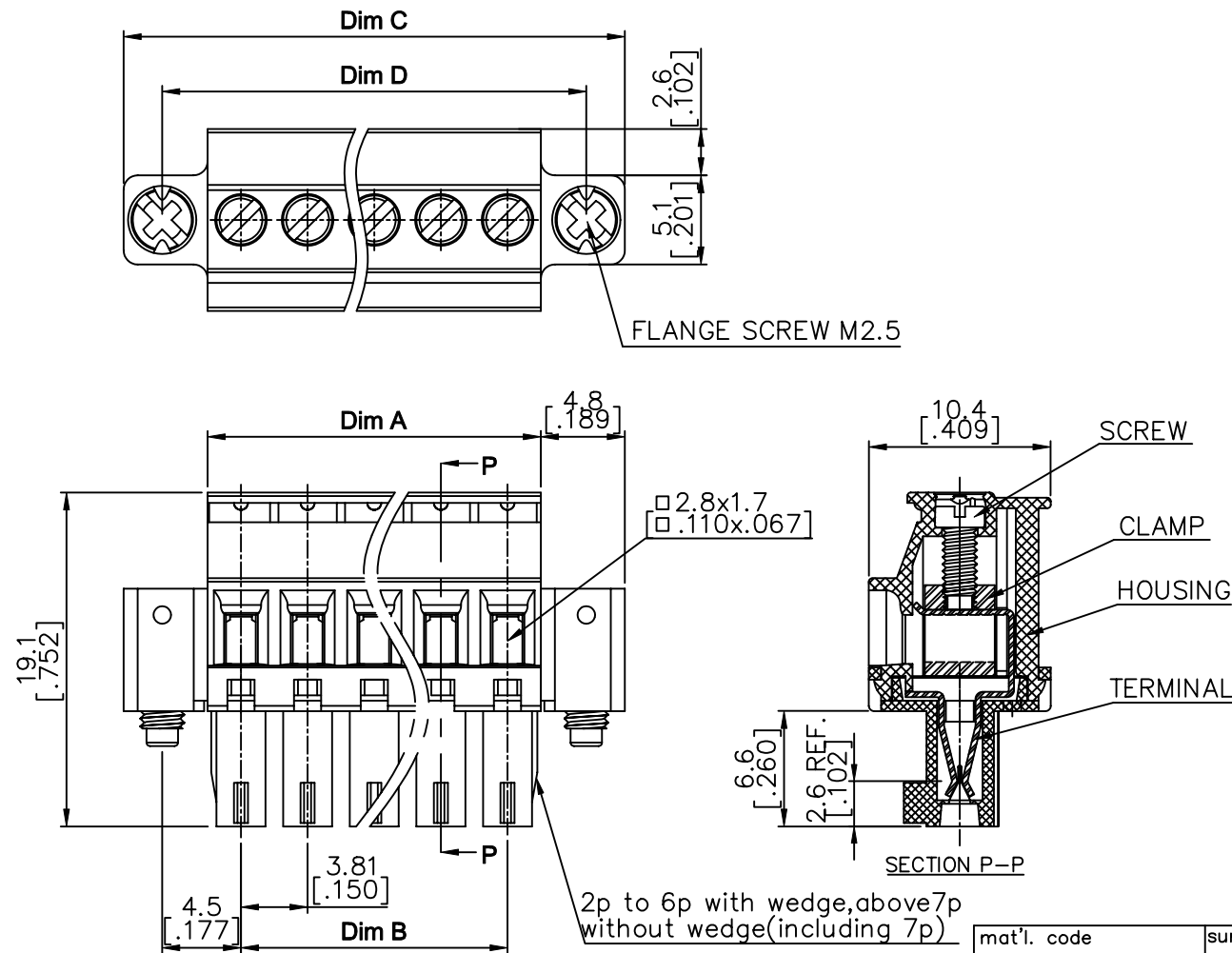
N = Number of poles

Dim A	$N \times 3.5 [.138]$
Dim B	$(N-1) \times 3.5 [.138]$
Dim C	$N \times [.138] 3.5 + 9.6 [.378]$
Dim D	$(N-1) \times 3.5 [.138] + 8.6 [.339]$

Poles	Tolerance
2p-6p	$\pm 0.15 [.006]$
7p-12p	$\pm 0.20 [.008]$
13p-16p	$\pm 0.25 [.100]$
17p-24p	$\pm 0.30 [.012]$

mat'l. code				surface ASME Y14.5	tolerance ASME Y14.5	projection MM INCH	product family TERMINAL BLOCK
ltr	ecn	no	dr	date	tolerances unless otherwise specified		title
G					angles X $\pm$ 0.5 [.020] X.X $\pm$ 0.3 [.012] X $\pm$ 1° X.XX $\pm$ 0.1 [.004]	scale	TERMINAL BLOCK PLUGGABLE PLUG, SIGNAL, ENTRY SIDE HOOK W/FLANGE
dr	WENDY	CHEN	042310				sheet 2 of 5 size
enr	JASON	HSU	042310				20020009 A4
chr	GARY	HSIEH	042310				
appd	JOSEPH	HSIA	042310				
sheet index	revision sheet						type CUSTOMER Drawing

PRODUCT NUMBER	SERIES NAME	PITCH
20020009-DXXXXXXLF	02-381	3.81 mm



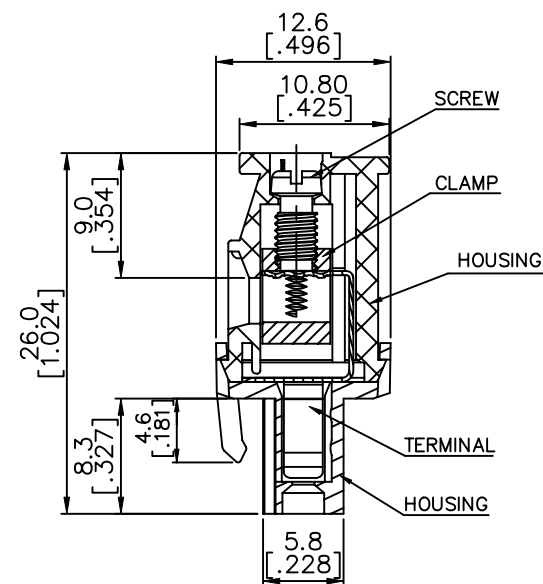
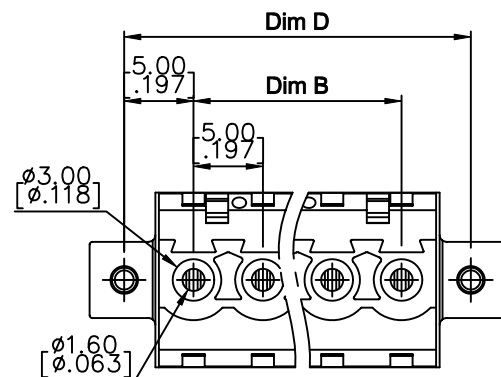
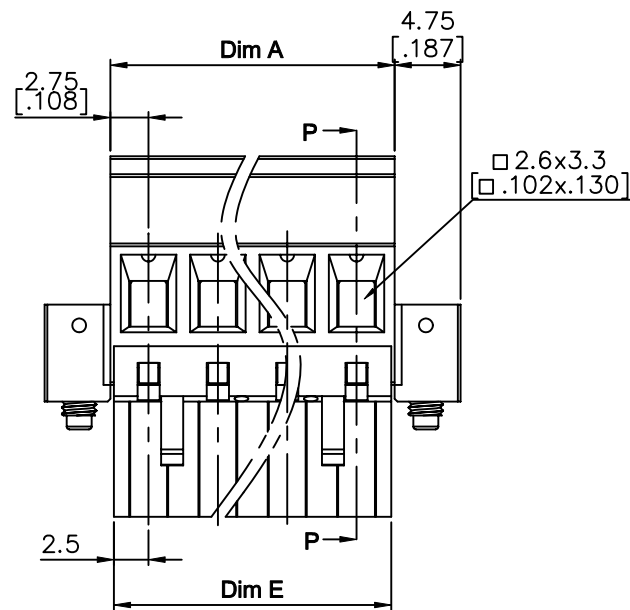
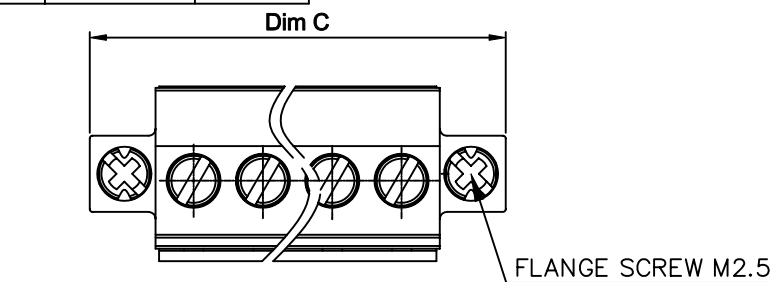
N = Number of poles

Dim A	NX3.81[.150]
Dim B	(N-1)X3.81[.150]
Dim C	NX3.81[.150]+9.6[.378]
Dim D	(N-1)X3.81[.150]+9.0[.354]

Poles	Tolerance
2p-6p	±0.15[.006]
7p-12p	±0.20[.008]
13p-16p	±0.25[.100]
17p-24p	±0.30[.012]

mat'l. code				surface ASME Y14.5 ✓	tolerance ASME Y14.5	projection MM INCH	product family TERMINAL BLOCK
ltr	ecn	no	dr	tolerances unless otherwise specified			title
G				angles	X.±0.5[.020] X.X±0.3[.012] X°±1° X.XX±0.1[.004]	scale	TERMINAL BLOCK PLUGGABLE PLUG, SIGNAL, ENTRY SIDE HOOK W/FLANGE
dr	WENDY	CHEN	042310	enr	JASON HSU	042310	sheet 3 of 5
chr	GARY	HSIEH	042310	appd	JOSEPH HSIA	042310	size A4
sheet index	revision	sheet					type CUSTOMER Drawing

PRODUCT NUMBER	SERIES NAME	PITCH
20020009-GXXXXXXLF	02-500	5.00 mm

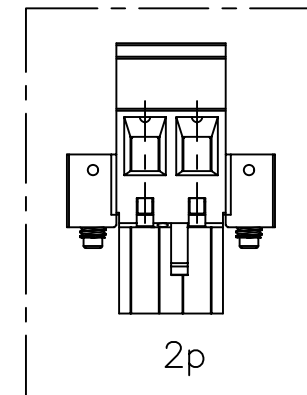




SECTION P-P

N = Number of poles

Dim A	$N \times 5.0 [.197] + 0.5 [.020]$
Dim B	$(N-1) \times 5.0 [.197]$
Dim C	$N \times 5.0 [.197] + 10.0 [.394]$
Dim D	$(N+1) \times 5.0 [.197]$
Dim E	$N \times 5.0 [.197]$

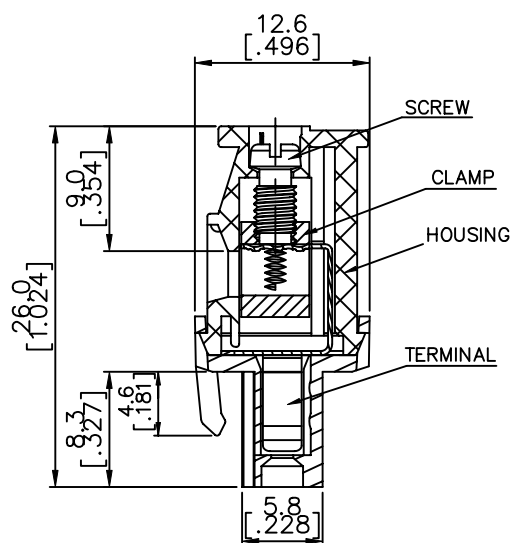
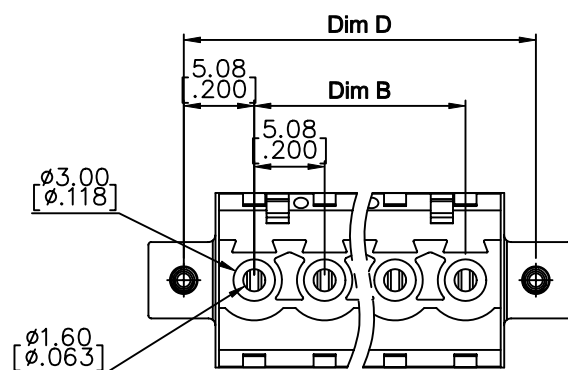
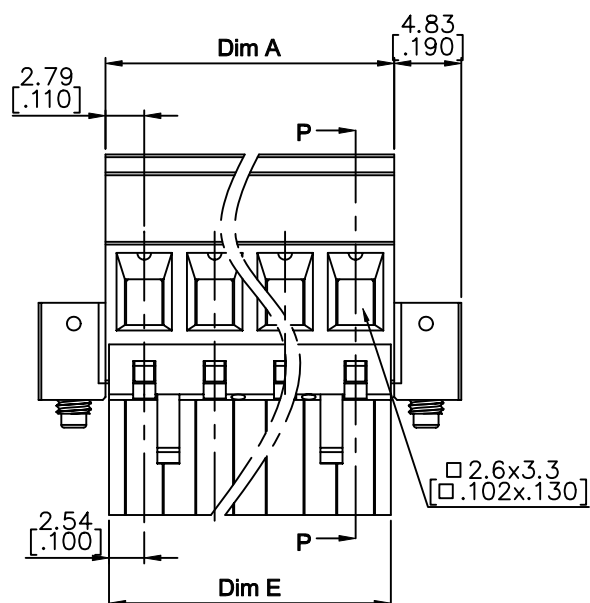
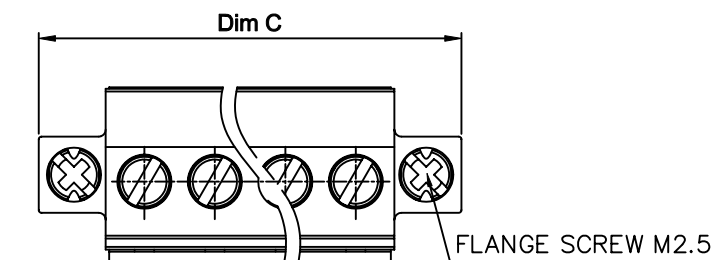
Poles	Tolerance
2p-6p	$\pm 0.15 [.006]$
7p-12p	$\pm 0.25 [.010]$
13p-18p	$\pm 0.30 [.012]$
19p-24p	$\pm 0.40 [.016]$



mat'l. code				surface ASME Y14.5		tolerance ASME Y14.5		projection 		product family TERMINAL BLOCK				
ltr	ecn no	dr	date	tolerances unless otherwise specified						title				
G				angles		X.±0.5[.020]		MM		TERMINAL BLOCK				
				X.X±0.3[.012]		[INCH]				PLUGGABLE PLUG, SIGNAL, ENTRYSIDE HOOK				
				X*±1°		X.XX±0.1[.004]		scale		W/FLANGE				
				dr	WENDY CHEN	042310				dwg no		sheet 4 of 5		size
				engr	JASON HSU	042310				20020009		A4		
				chr	GARY HSIEH	042310								
				appd	JOSEPH HSIA	042310								
sheet index		revision sheet												



PRODUCT NUMBER	SERIES NAME	PITCH
20020009-HXXXXXXLF	02-508	5.08 mm

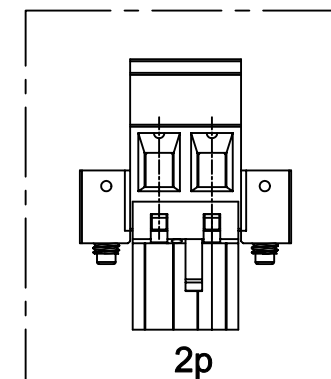


SECTION P-P

N = Number of poles

Dim A	$N \times 5.08 [.200] + 0.5 [.020]$
Dim B	$(N-1) \times 5.08 [.200]$
Dim C	$N \times 5.08 [.200] + 9.66 [.380]$
Dim D	$(N+1) \times 5.08 [.200]$
Dim E	$N \times 5.08 [.200]$

Poles	Tolerance
2p-6p	$\pm 0.15 [.006]$
7p-12p	$\pm 0.20 [.008]$
13p-18p	$\pm 0.30 [.012]$
19p-24p	$\pm 0.40 [.016]$



mat'l. code	surface ASME Y14.5	tolerance ASME Y14.5	projection MM INCH	product family TERMINAL BLOCK
ltr	ecn no	dr	date	title TERMINAL BLOCK PLUGGABLE PLUG, SIGNAL, ENTRYSIDE HOOK W/FLANGE
G				sheet 5 of 5 size
				20020009 A4
				type CUSTOMER Drawing
sheet index	revision sheet			

# Mouser Electronics

Authorized Distributor

Click to View Pricing, Inventory, Delivery & Lifecycle Information:

## Amphenol:

[20020009-G081B01LF](#) [20020009-H031B01LF](#) [20020009-H061B01LF](#) [20020009-G101B01LF](#) [20020009-H081B01LF](#) [20020009-G061B01LF](#) [20020009-H021B01LF](#) [20020009-G031B01LF](#) [20020009-H041B01LF](#) [20020009-G041B01LF](#) [20020009-H101B01LF](#) [20020009-G021B01LF](#)