

PRODUCT NUMBER

20020006-XXXXXXLF

20020006 — 

PITCH

G: 5.00 mm
H: 5.08 mm



POLES

02: 2 POLES
03: 3 POLES
04: 4 POLES
—
24: 24 POLES

LF : DENOTED RoHS COMPATIBLE

1 : STANDARD PRODUCT
W/ BOX PACKING

SCREW CODE

CODE	SCREW TYPE	AVAILABILITY
A	-/+ 	ON REQUEST ONLY
B	- 	STANDARD

HOUSING CODE

CODE	COLOR	AVAILABILITY
1	GREEN(RAL 6018/T)	STANDARD
2	BLACK	ON REQUEST ONLY
3	GREY(RAL 7004/P)	ON REQUEST ONLY
4	BLUE(RAL 5015/A)	ON REQUEST ONLY

NOTES:

MATERIALS

1-1 HOUSING: THERMALPLASTIC RESIN, UL 94V-0 RATED.

1-2 SCREW: STEEL, ZINC PLATED.

1-3 CLAMP: COPPER ALLOY, NICKEL PLATED.

1-4 TERMINAL: COPPER ALLOY, TIN PLATED.

2. PRODUCTION SPECIFICATION REFER TO FCI GS-12-625.

3. BOXED PACKAGING.

DETAILED PRODUCT PACKING SPECIFICATION REFER TO FCI GS-14-1394.

4. FCI, SAFETY CERTIFICATE LOGO AND SERIES NAME TO BE SHOWN ON PRODUCT SURFACE.

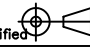
5. THE PRODUCTS WHERE THE PART NUMBER END IN "LF" MEET THE EUROPEAN UNION DIRECTIVE AND OTHER COUNTRY REGULATIONS AS DESCRIBED IN GS-22-008.

PROPERTY TABLE

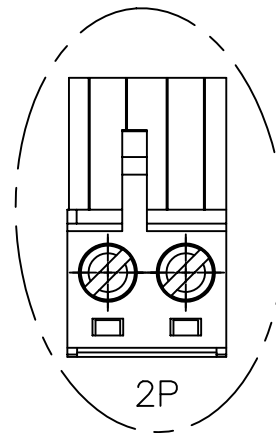
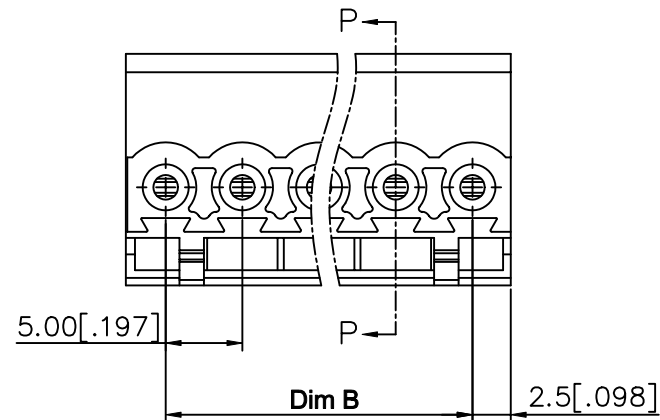
PROPERTY TABLE				
FCI SERIES NAME		01-500	01-508	
PITCH (mm)		5.00	5.08	
VOLTAGE RATING (VAC)		300	300	
CURRENT RATING (A)		12	12	
APPLICABLE WIRE RANGE (AWG)		1-WIRE	12~24	12~24
		2-WIRE	18	18
WIRE CROSS SECTION (mm ²)	SOLID	1-WIRE	2.5	2.5
		2-WIRE	1.0	1.0
	STRANDED	1-WIRE	2.5	2.5
		2-WIRE	1.5	1.5
OPENING CONTACT HOUSING(mm ²)		2.6x3.2	2.6x3.2	
WIRE STRIP LENGTH(mm)		7~8	7~8	
TORQUE +/−10% (N-m/Lb-in)		0.57/5.0	0.57/5.0	
SCREW		M3x0.5	M3x0.5	
WITHSTANDING VOLTAGE (kV)		1.6	1.6	
OPERATING TEMP. (°C)		−40~+115	−40~+115	
POLES AVAILABLE		02~24	02~24	

SAFETY CERTIFICATE



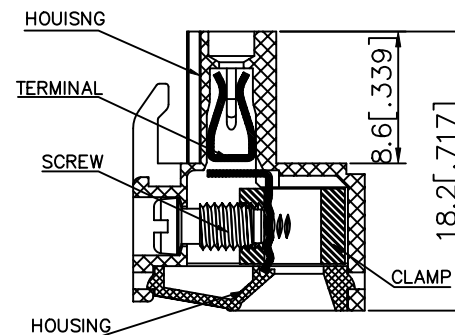
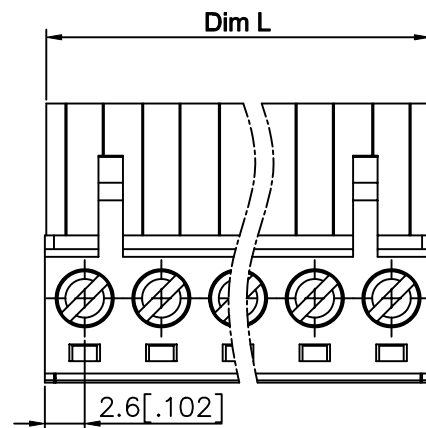
mat'l. code				surface	tolerance	projection	product family
				ASME Y14.5	ASME Y14.5		TERMINAL BLOCK
ltr	ecn no	dr	date	tolerances unless otherwise specified			title
D	T10-0042	WL	030310	angles	X.±0.5[.020]	MM	TERMINAL BLOCK PLUGGABLE PLUG, CONTACT UP SIDE
E	T10-0127	WL	080910	to 1°	X.X±0.3[.012]	INCH	
F	T10-0159	WL	100410		X.XX±0.1[.004]	scale	sheet 1 of 3 size
G	T10-0187	WL	121410	dr	BEER FU	062509	
H	T-004746	WL	072011	enr	BEER FU	062509	20020006
				chr	GARY HSIEH	062509	
				appd	JOSEPH HSIA	062509	A4
sheet index	revision sheet	H	H	H			type
		1	2	3			CUSTOMER Drawing

PRODUCT NUMBER	SERIES NAME	PITCH
20020006-GXXXXXL	01-500	5.00 mm



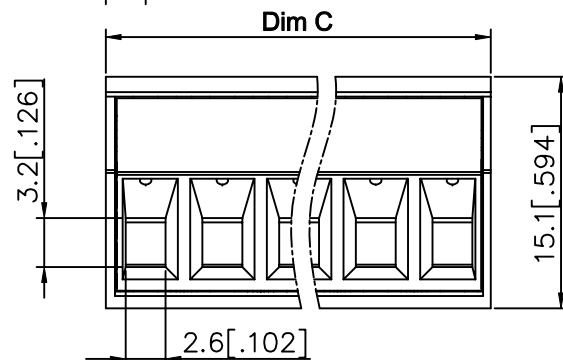
N= NUMBER OF POLES
DIMENSION

Dim L	$N \times 5.0[.197]$
Bim B	$(N-1) \times 5.0[.197]$
Dim C	$N \times 5.0[.197] + 0.10[.004]$



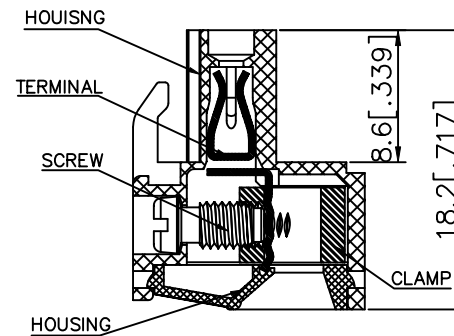
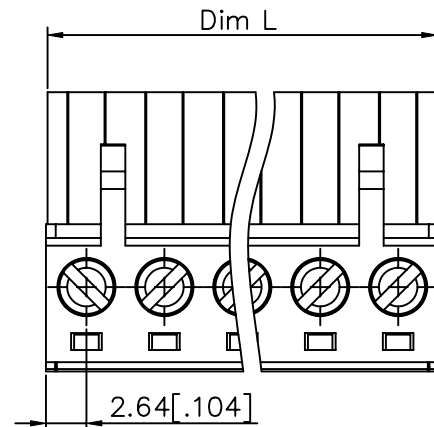
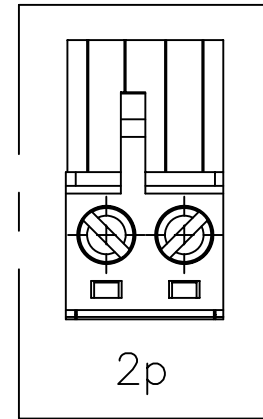
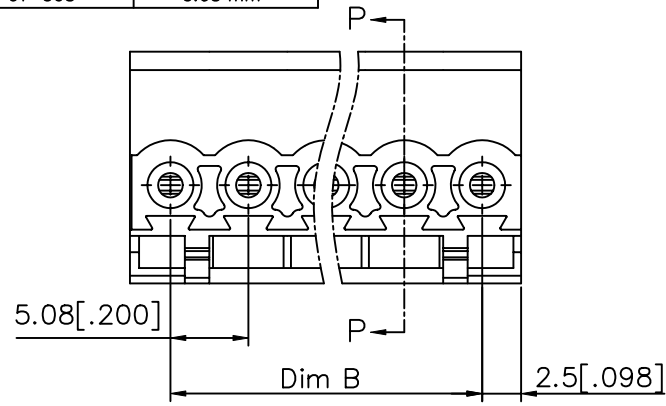
SECTION P-P

Poles	Tolerance
2P-5P	$\pm 0.15[.006]$
6P-10P	$\pm 0.20[.008]$
11P-15P	$\pm 0.25[.010]$
16P-20P	$\pm 0.30[.012]$
21P-24P	$\pm 0.40[.016]$



mat'l. code	surface ASME Y14.5	tolerance ASME Y14.5	projection	product family TERMINAL BLOCK
ltr	ecn no	dr	date	title
H				TERMINAL BLOCK
				PLUGGABLE PLUG, CONTACT UP SIDE
				dwg no
				sheet 2 of 3
				size
				A4
				type
				CUSTOMER Drawing
sheet index	revision	sheet		

PRODUCT NUMBER	SERIES NAME	PITCH
20020006-HXXXXXLf	01-508	5.08 mm

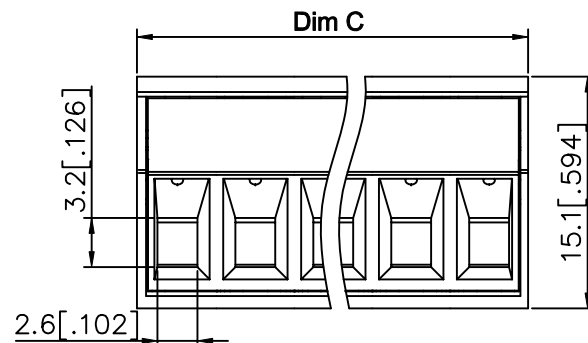


SECTION P-P

N= NUMBER OF POLES
DIMENSION

Dim L	Nx5.08 [.200]
Dim B	(N-1)x5.08 [.200]
Dim C	Nx5.08 [.200]+0.10 [.004]

Poles	Tolerance
2P-5P	±0.15 [.006]
6P-10P	±0.20 [.008]
11P-15P	±0.25 [.010]
16P-20P	±0.30 [.012]
21P-24P	±0.40 [.016]



mat'l. code		surface ASME Y14.5	tolerance ASME Y14.5	projection MM INCH	product family TERMINAL BLOCK
ltr	ecn no	dr	date		title
H					TERMINAL BLOCK PLUGGABLE PLUG, CONTACT UP SIDE
					dwg no
					20020006
					type
					CUSTOMER Drawing
sheet index	revision sheet				

Mouser Electronics

Authorized Distributor

Click to View Pricing, Inventory, Delivery & Lifecycle Information:

[Amphenol:](#)

[20020006-H031B01LF](#) [20020006-H061B01LF](#) [20020006-H041B01LF](#) [20020006-H091B01LF](#) [20020006-H121B01LF](#)
[20020006-G051B01LF](#) [20020006-G151B01LF](#) [20020006-H221B01LF](#) [20020006-H151B01LF](#) [20020006-](#)
[G211B01LF](#) [20020006-H161B01LF](#) [20020006-G091B01LF](#) [20020006-G161B01LF](#) [20020006-G061B01LF](#)
[20020006-G121B01LF](#) [20020006-H191B01LF](#) [20020006-H081B01LF](#) [20020006-G181B01LF](#) [20020006-G201B01LF](#)
[20020006-G101B01LF](#) [20020006-H201B01LF](#) [20020006-G041B01LF](#) [20020006-H211B01LF](#) [20020006-](#)
[G111B01LF](#) [20020006-G071B01LF](#) [20020006-H241B01LF](#) [20020006-G021B01LF](#) [20020006-H101B01LF](#)
[20020006-G231B01LF](#) [20020006-H131B01LF](#) [20020006-G241B01LF](#) [20020006-G081B01LF](#) [20020006-H051B01LF](#)
[20020006-H181B01LF](#) [20020006-G191B01LF](#) [20020006-G221B01LF](#) [20020006-H071B01LF](#) [20020006-](#)
[G131B01LF](#) [20020006-H171B01LF](#) [20020006-H231B01LF](#) [20020006-G031B01LF](#) [20020006-G141B01LF](#)
[20020006-H111B01LF](#) [20020006-H141B01LF](#) [20020006-G171B01LF](#) [20020006-H021B01LF](#) [20020006-G051A01LF](#)
[20020006-G041A01LF](#) [20020006-G061A01LF](#) [20020006-G071A01LF](#) [20020006-G031A01LF](#) [20020006-](#)
[H021A01LF](#) [20020006-G022B01LF](#) [20020006-G042B01LF](#) [20020006-G062B01LF](#) [20020006-G032B01LF](#)
[20020006-H023B01LF](#) [20020006H021A01L](#) [20020006-G043B01LF](#) [20020006-H033B01LF](#)