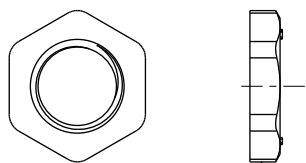


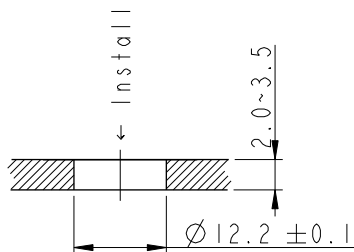
THIS DOCUMENT IS SUBJECT TO CHANGE WITHOUT NOTICE. IT IS CONFIDENTIAL AND A PROPERTY OF Amphenol LTW. DISCLOSURE TO THIRD PARTY HAS TO BE AUTHORIZED BY Amphenol LTW.

Screw Nut: Optional part  
No.: APTM-AMBPA012-001  
螺母作為選配件



M12\*1.5

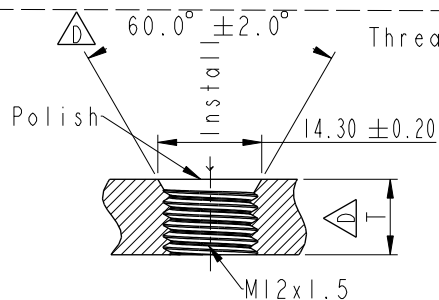
Through-hole



Recommended Panel Cut-Out

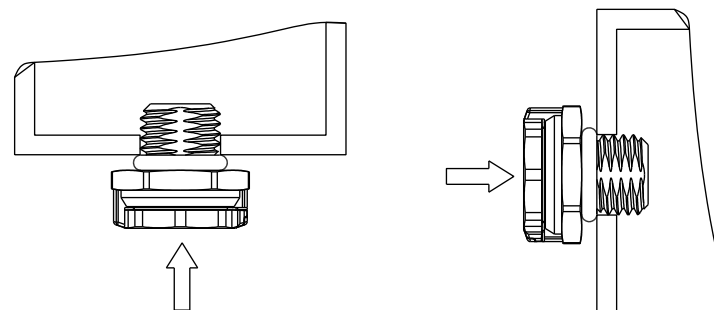
建議開孔尺寸

Threaded-hole



Recommended Panel Cut-Out

建議開孔尺寸

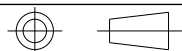


Recommended  
installation orientation  
建議安裝朝向

Note:

- \* Important Dimension.
- \* Waterproof Rate: IP68(Immersion for 60 minutes at a depth of 2 meter), IP69K
- \* Housing: Zinc Alloy, Nickel Plated
- \* Cap: Zinc Alloy, Nickel Plated
- \* Membrane: ePTFE, Oleophobic
- \* O-Ring: Silicone, Dark Gray
- \* Air Permeability: >1760ml/min at 7 kPa
- \* Recommended Torque: 6.0~8.0 kgf.cm

UNIT:mm



TOLERANCE

.X ±0.25  
.XX ±0.1  
.XXX ±0.05  
ANGLES ±1°

TITLE

VENT, M12, ME  
1760ML/MIN, SR

SCALE

2:1

SIZE

A4

SHEET

2 OF 2

REV.

E

WC-REV.

.0

Inspection item

Amphenol LTW

安費諾亮泰企業股份有限公司

ITEM NO

VENT-MSINME-08001

DRAWN BY

Vicky

DATE

2024-05-28

DWG NO

VENT-MSINME-08001

CHECKED BY

Rita

DATE

2024-05-28

CUSTOMER

ALTW

APPROVED BY

Fred

DATE

2024-05-28

# Mouser Electronics

Authorized Distributor

Click to View Pricing, Inventory, Delivery & Lifecycle Information:

[Amphenol:](#)

[VENT-MS1NME-O8001](#)