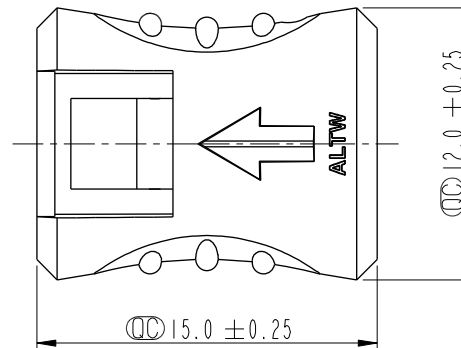
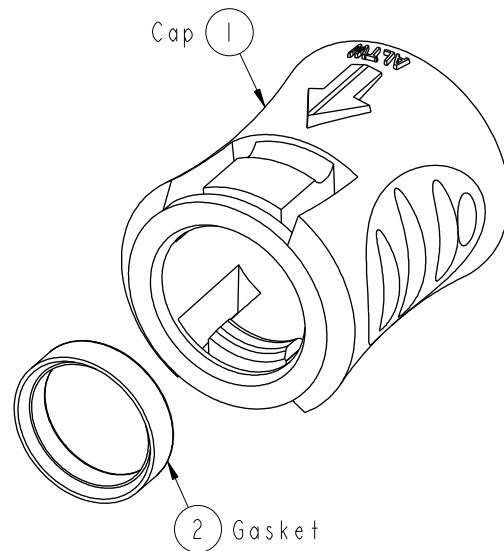
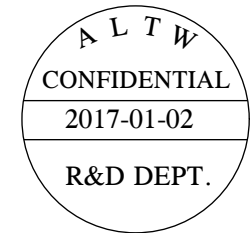
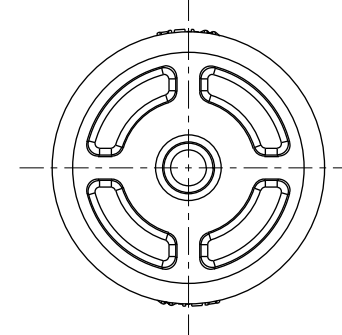
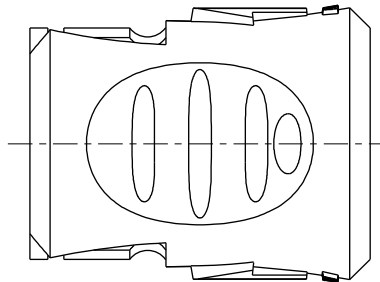
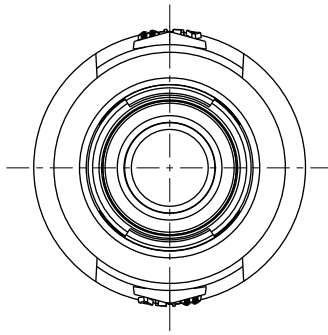




REV.	ECN NO.	DATE	SIGN	DESCRIPTION
A	Initial Release	2017/01/03	Aric Ko	Rev. A

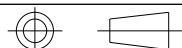


Material Specification:
* Cap: Thermoplastic, Black.
* Gasket: Rubber, White.

Environmental Specification:
* Waterproof Rate: IP68(Mated, 1M/24 Hours)

Mating Connector:
* Overmolded with Cable: Q8XX-0XAMMM-QL8AXX
* Receptacle: Q8XX-0XPMMS-QF8001

UNIT:mm



TOLERANCE
.X ±0.25
.XX ±0.1
.XXX ±0.05
ANGLES ±1°

TITLE
WATERPROOF CAP
08,MALE CONN,PUSH LOCK

SCALE 3:1 SIZE A4 SHEET 1 OF 1

REV. A WC-REV. A.1 QC:Inspection item

Amphenol LTW
安費諾亮泰企業股份有限公司

ITEM NO	CAP-WBBMQMAI	DRAWN BY	Aric Ko	DATE	2017-01-02
DWG NO	CAP-WBBMQMAI	CHECKED BY	Victor Hung	DATE	2017-01-02
CUSTOMER	ALTW	APPROVED BY	Kevin Hu	DATE	2017-01-02

THIS DOCUMENT IS SUBJECT TO CHANGE WITHOUT NOTICE. IT IS CONFIDENTIAL AND A PROPERTY OF Amphenol LTW. DISCLOSURE TO THIRD PARTY HAS TO BE AUTHORIZED BY Amphenol LTW.

Mouser Electronics

Authorized Distributor

Click to View Pricing, Inventory, Delivery & Lifecycle Information:

[Amphenol:](#)

[CAP-WBBMQMA1](#)