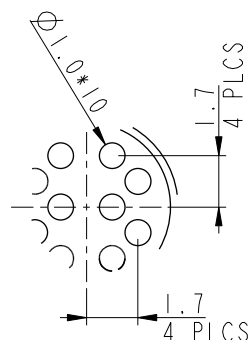
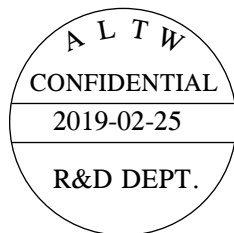
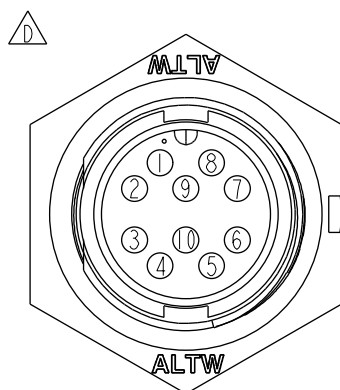
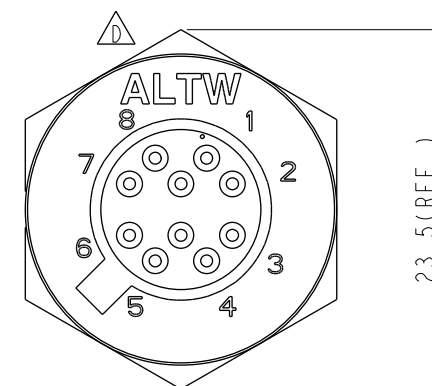
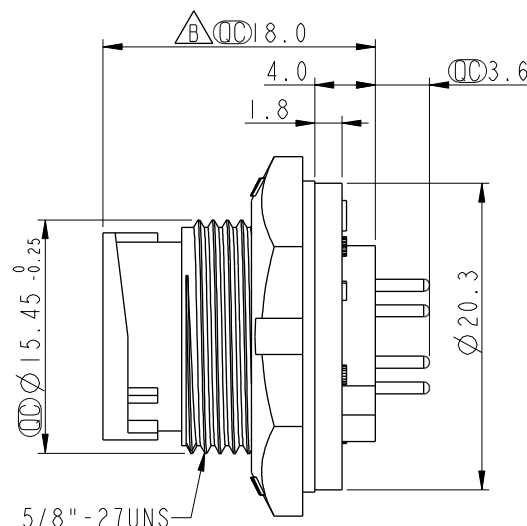
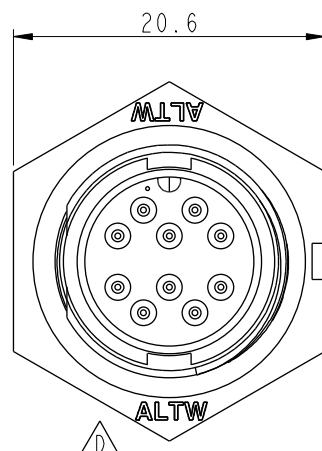


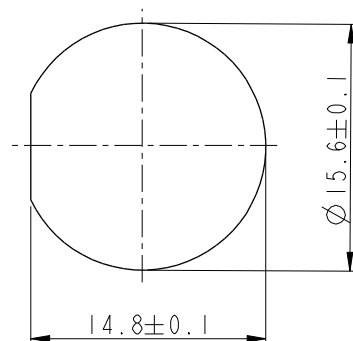
REV.	ECN NO.	DATE	SIGN	DESCRIPTION
C	LEN-8B0409	2008/09/22	Shin	Add Note
D	LEN1530156	2014/12/17	Jinhai	Change Logo
E	C190269	2019/02/25	Ruru	Modify Note



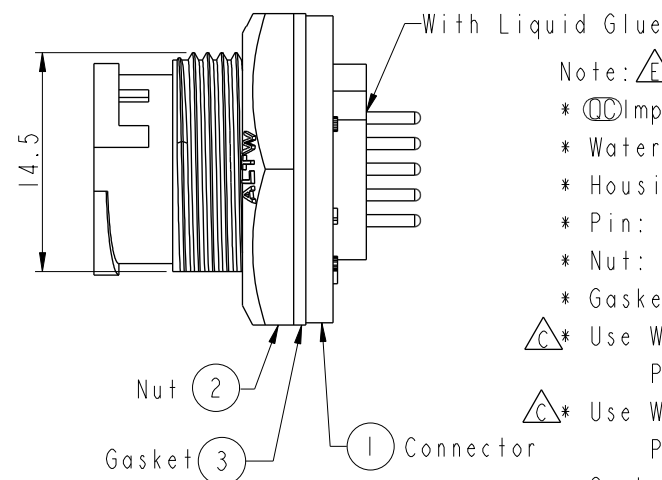
PCB Lay-out



Pin Assignments Front View



Recommended Panel Cut-out



Note: ΔE

- *  Important Dimension To Check.
- * Waterproof Rate: IP67, Unmated
- * Housing: Thermoplastic, Black
- * Pin: Copper Alloy, Gold Plated
- * Nut: Thermoplastic, Black
- * Gasket: Rubber, Black
- *  Use With Waterproof Cap Or Dust Cap
Panel Thickness Max: 3.0mm
- *  Use Without Waterproof Cap Or Dust Cap
Panel Thickness Max: 4.5mm
- or
- * Gasket and Nut are packed separately
in PE bags.

UNIT: mm			TITLE Standard Panel Lock 10Pin M Conn. M Pin			Amphenol LTW 安費諾亮泰企業股份有限公司		ITEM NO BU-10PMMP-LC7001		DRAWN BY Ruru		DATE 2019-02-25				
TOLERANCE .X ±0.25 .XX ±0.1 .XXX ±0.05 ANGLES ±1°			SCALE 2:1		SIZE A4			SHEET 1 OF 1		DWG NO BU-10PMMP-LC7001		CHECKED BY Rita		DATE 2019-02-25		
			REV. E		WC-REV. A.4			QC: Inspection item		CUSTOMER ALTW		APPROVED BY Max		DATE 2019-02-25		

Mouser Electronics

Authorized Distributor

Click to View Pricing, Inventory, Delivery & Lifecycle Information:

[Amphenol:](#)

[BU-10PMMP-LC7001](#)