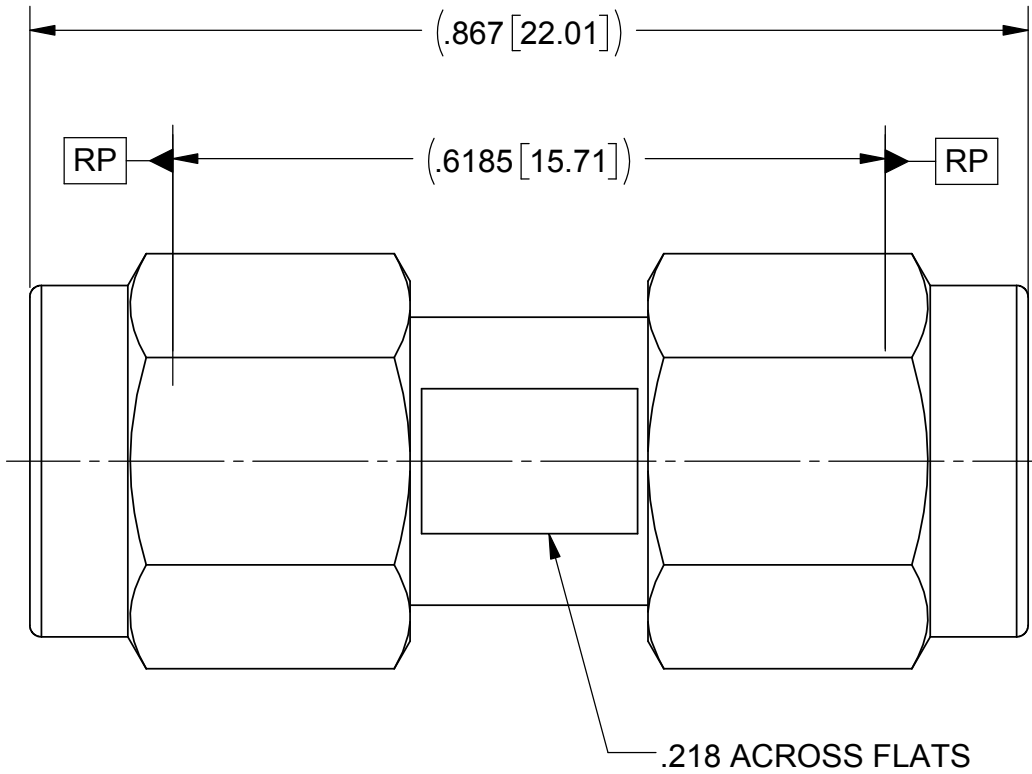
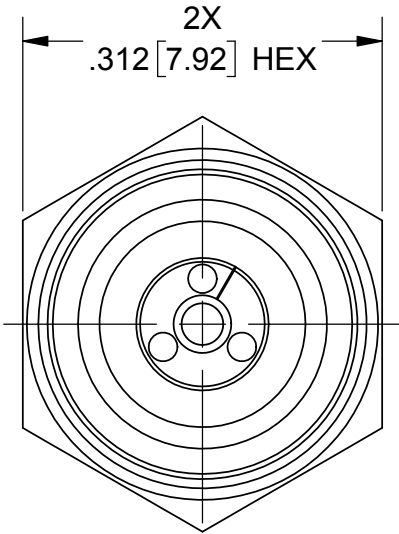


ROHS COMPLIANT

PRODUCT DATA DRAWING CUI BASIC

REVISION HISTORY			
REV	DESCRIPTION	DATE	APPROVED
A	DCN 41727	10/15	DAL
B	REV. DCN 47866	08/24/08	STW



MATERIAL:

**BODY, SLEEVE, &
COUPLING NUTS:**

STAINLESS STEEL PER AMS-5640, ALLOY UNS S30300, TYPE 1
OR ASTM A582, ,TYPE 303, CONDITION A.

LOCK RINGS:

BERYLLIUM COPPER PER ASTM B194, B196 OR B197.
ALLOY No. UNS C17200 OR C17300.

CONTACT:

BERYLLIUM COPPER PER ASTM B196, ALLOY No. UNS C17300, TD04

BEADS:

PEI (ULTEM 1000) PER ASTM D5205

GASKETS:

SILICONE RUBBER PER A-A-59588, CLASS 2B, GRADE 60/70

FINISH:

BODY, SLEEVES & COUPLING NUTS:

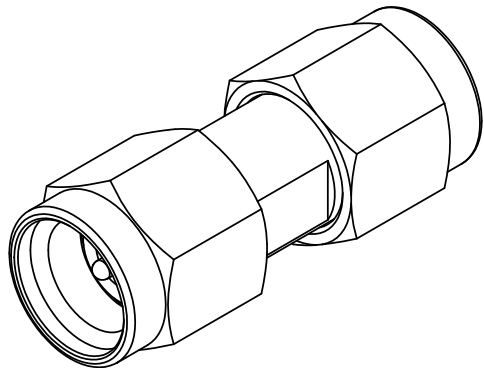
PASSIVATED PER AMS 2700


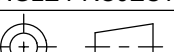
CONTACTS:

GOLD PER ASTM B 488, TYPE I, CODE C, CLASS .50
OVER NICKEL PER AMS-QQ-N-290, CLASS 1, .00005" MIN

PERFORMANCE

IMPEDANCE: 50 OHMS
FREQ. RANGE: DC TO 40.0 GHz



MATERIAL:	SEE NOTES	DIMENSIONS ARE IN INCHES TOLERANCES: FRACTIONAL: ±1/64 ANGULAR: X° ±1°0' X'X'' ±15' DECIMAL: .X ±.030 .XX ±.010 .XXX ±.005 INTERPRET DIMENSIONS AND TOLERANCES PER ASME Y14.5M - 1994	UNLESS OTHERWISE SPECIFIED 1) ALL DIMENSIONS ARE IN INCHES [MILLIMETERS] 2) ALL DIMENSIONS ARE AFTER PLATING. 3) BREAK CORNERS & EDGES .005 R. MAX. 4) CHAM. 1ST & LAST THREADS. 5) SURFACE ROUGHNESS 63-MIL-STD-10. 6) DIA.'S ON COMMON CENTERS TO BE CONCENTRIC WITHIN .005 T.I.R. 7) REMOVE ALL BURRS	<div><div>Amphenol</div><div>2400 Centrepark West Drive, Suite 100 West Palm Beach, FL 33409</div></div>				
FINISH:	SEE NOTES			TITLE:	ADAPTER DC-40 GHz SVK PLUG TO SVK PLUG			
SURFACE AREA:	N/A			SIZE	CAGE CODE	DWG. NO.		
PROPRIETARY		THIRD ANGLE PROJECTION		DRAWN:		BRT 09/14/02		
THE INFORMATION CONTAINED IN THIS DRAWING IS THE SOLE PROPERTY OF SV MICROWAVE, INC. ANY REPRODUCTION IN PART OR AS A WHOLE WITHOUT THE WRITTEN PERMISSION OF SV MICROWAVE, INC IS PROHIBITED.				CHECKED:		DWC 09/14/02		
				APPROVED:		DWC 09/14/02		
		SCALE: 6:1		SHEET 1 OF 1				

Mouser Electronics

Authorized Distributor

Click to View Pricing, Inventory, Delivery & Lifecycle Information:

[Amphenol:](#)

[SF1593-6000](#)