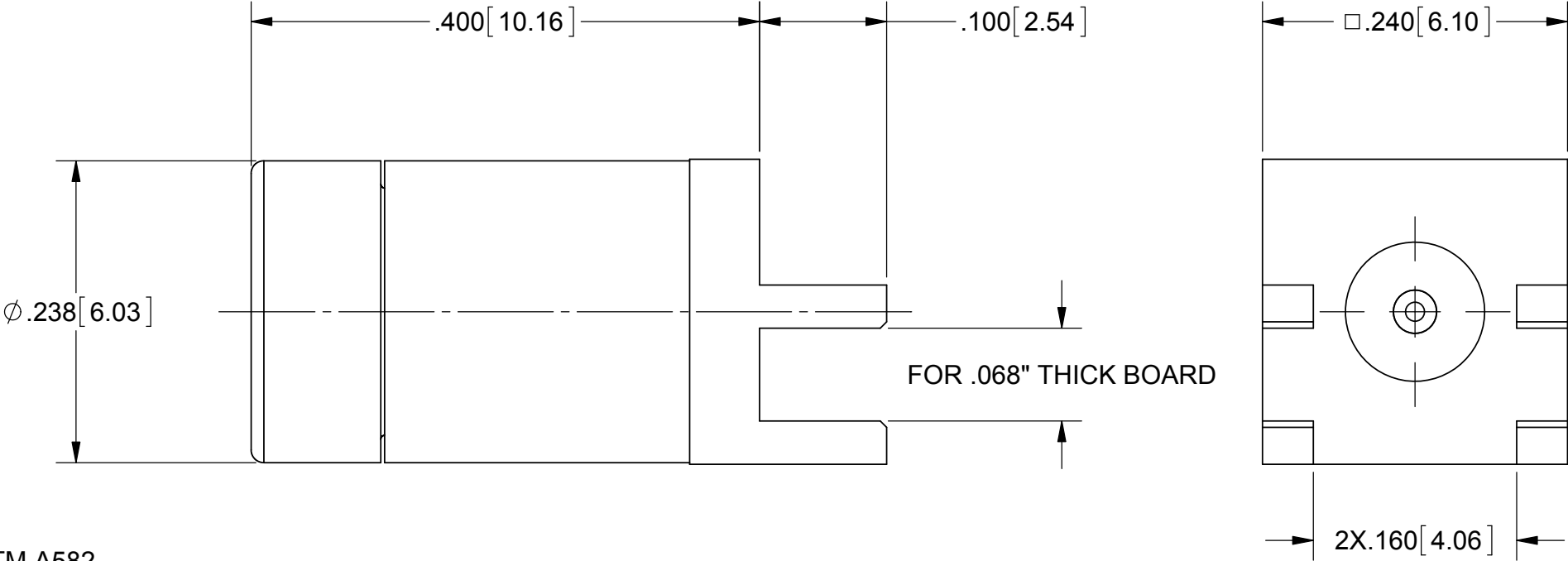
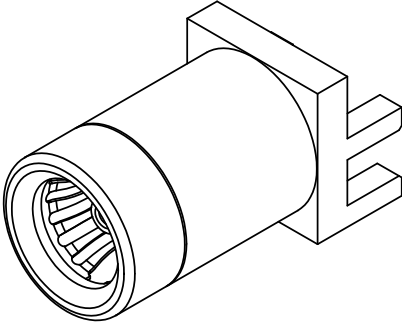


ROHS COMPLIANT

# PRODUCT DATA DRAWING

REVISION HISTORY			
REV	DESCRIPTION	DATE	APPROVED
-	DCN 42247	05/16	DAL



## MATERIAL:

BODY & INSERT: STAINLESS STEEL PER AMS-5640,  
ALLOY UNS S30300, TYPE 1; OR ASTM A582  
TYPE 303, COND A

CENTER CONTACT: BERYLLIUM COPPER PER ASTM B196.  
ALLOY No. UNS C17300, TD04

SPRING CONTACT: BERYLLIUM COPPER ALLOY 25, 1/4 HARD

SHIM SPRING: BERYLLIUM COPPER PER ASTM B196,  
ALLOY No. UNS C17200, TD04

INSULATOR: PTFE PER ASTM D1710, TYPE I, GRADE 1, CLASS B


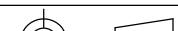
## FINISH:

INSERT: PASSIVATED PER AMS-2700

BODY & CONTACTS: GOLD PER ASTM B488, TYPE II,  
CODE C, CLASS 1.27, OVER NICKEL  
PER AMS-QQ-N-290, CLASS 1, .00005" MIN.

## PERFORMANCE:

IMPEDANCE: 50 OHMS  
FREQ. RANGE: DC TO 18.0 GHz.

MATERIAL:	SEE NOTES	DIMENSIONS ARE IN INCHES TOLERANCES:		UNLESS OTHERWISE SPECIFIED		 2400 Centrepark West Drive, Suite 100 West Palm Beach, FL 33409	
FINISH:	SEE NOTES	FRACTIONAL: $\pm 1/64$ ANGULAR: $X^\circ \pm 1^\circ 0'$ $X'' \pm 15'$ DECIMAL: $.X \pm .030$ $.XX \pm .010$ $.XXX \pm .005$		1) ALL DIMENSIONS ARE IN INCHES (MILLIMETERS) 2) ALL DIMENSIONS ARE AFTER PLATING. 3) BREAK CORNERS & EDGES .005 R. MAX. 4) CHAM. 1ST & LAST THREADS. 5) SURFACE ROUGHNESS 63-MIL-STD-10. 6) DIA.'S ON COMMON CENTERS TO BE CONCENTRIC WITHIN .005 T.I.P. 7) REMOVE ALL BURRS		TITLE:	
SURFACE AREA:	N/A	INTERPRET DIMENSIONS AND TOLERANCES PER ASME Y14.5M - 1994				BMMA JACK EDGE LAUNCH	
PROPRIETARY		THIRD ANGLE PROJECTION		DRAWN: GPF 05/13/16		SIZE	CAGE CODE
THE INFORMATION CONTAINED IN THIS DRAWING IS THE SOLE PROPERTY OF SV MICROWAVE, INC. ANY REPRODUCTION IN PART OR AS A WHOLE WITHOUT THE WRITTEN PERMISSION OF SV MICROWAVE, INC IS PROHIBITED.				CHECKED: DAL 05/13/16		DWG. NO.	1421-60014
				APPROVED: DAL 05/13/16		SCALE: 8:1	SHEET 1 OF 1

# Mouser Electronics

Authorized Distributor

Click to View Pricing, Inventory, Delivery & Lifecycle Information:

[Amphenol:](#)

[1421-60014](#)