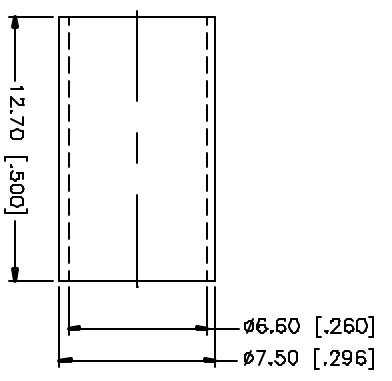
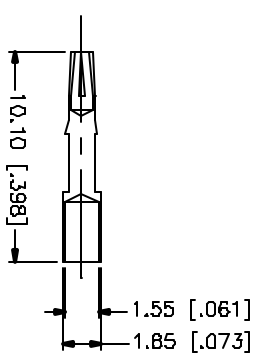
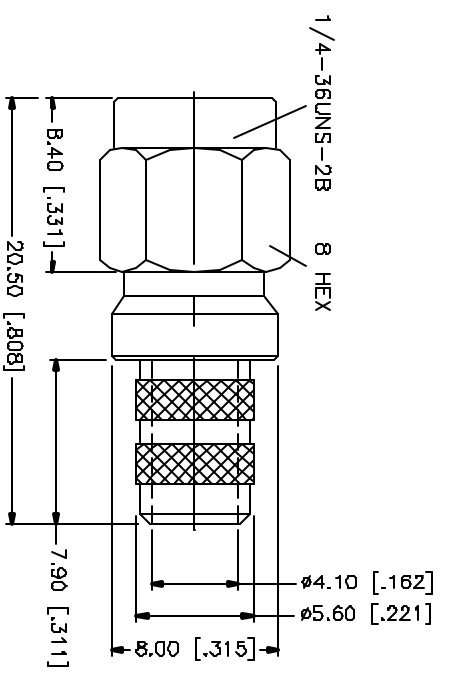
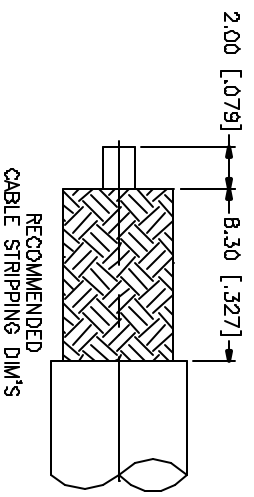


REV.	DATE	DESCRIPTION
NC	07/09/99	INITIAL RELEASE
A	05/01/04	UPDATE DRAWING FORMAT



VALUES DERIVED FROM THE FOLLOWING TABLES ARE APPROXIMATE AND FOR DESIGN PURPOSES ONLY. TOLERANCES FOR UNLINED ARE: A - 0.0075" B - 0.0075" C - 0.0075" D - 0.0075" E - 0.0075" F - 0.0075" G - 0.0075" H - 0.0075" I - 0.0075" J - 0.0075" K - 0.0075" L - 0.0075" M - 0.0075" N - 0.0075" O - 0.0075" P - 0.0075" Q - 0.0075" R - 0.0075" S - 0.0075" T - 0.0075" U - 0.0075" V - 0.0075" W - 0.0075" X - 0.0075" Y - 0.0075" Z - 0.0075"

APPROVALS	DATE
DRWN G.R.S.	05/01/04
CHECKED	
DESIGNED	
SHEET 1 OF 1	

**Amphenol Connex**

SMA REVERSE POLARITY CRIMP PLUG  
(FOR BELDEN RG-8/X, TIMES LMR-240MA)

PART NO. 132231RP

QTY	FINISH	MATERIAL	DESCRIPTION
1	GOLD	COPPER	FERRULE
1	GOLD	BER. COPPER	CONTACT PIN
1	GOLD	BRASS	SHELL/BODY

REV. NO.	REV.	SIZE	SCALE
132231RP.DWG	A	A	NA

# Mouser Electronics

Authorized Distributor

Click to View Pricing, Inventory, Delivery & Lifecycle Information:

[Amphenol:](#)

[132231RP](#)