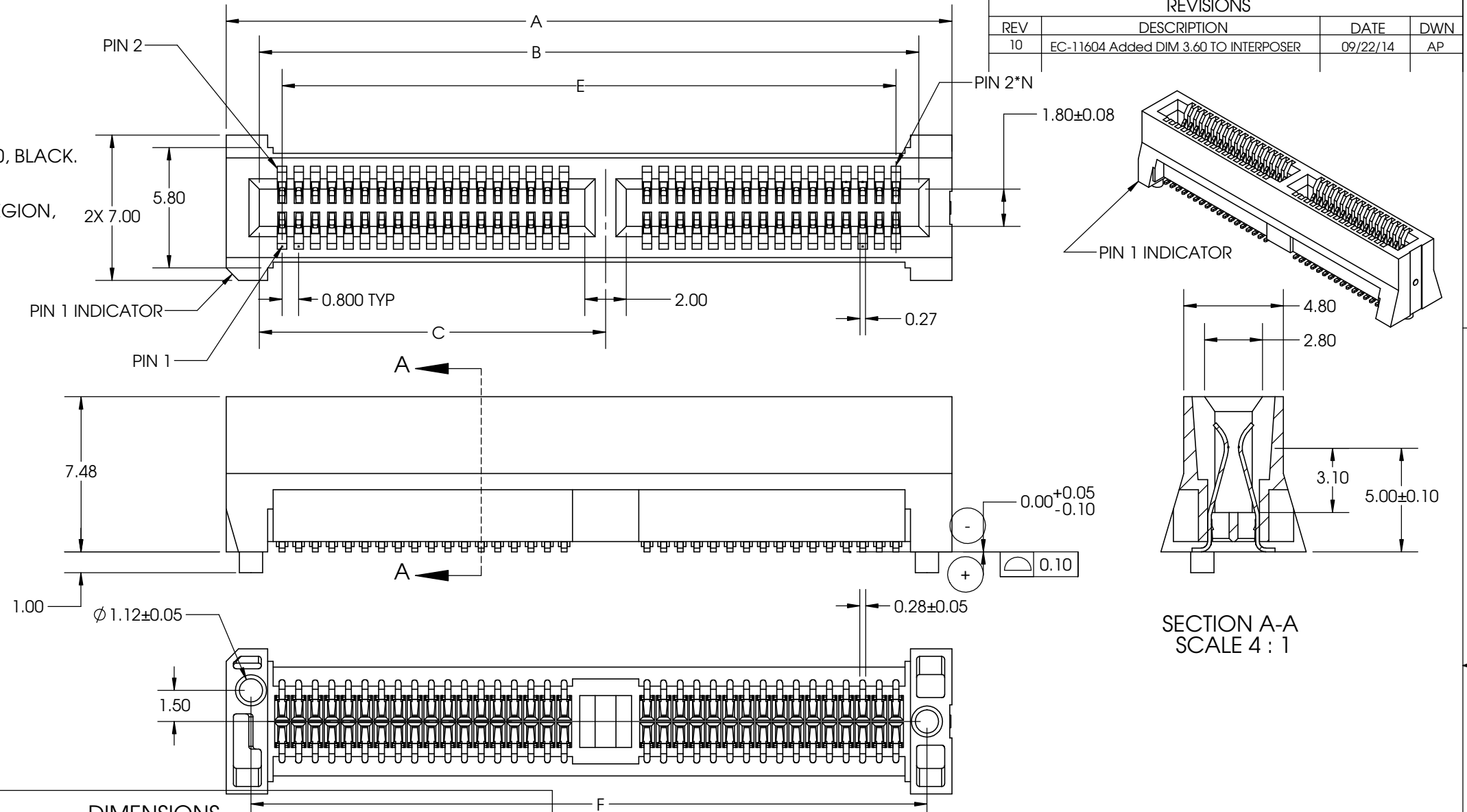


PART NUMBER
11216-XXX

REVISIONS			
REV	DESCRIPTION	DATE	DWN
10	EC-11604 Added DIM 3.60 TO INTERPOSER	09/22/14	AP

NOTES:

- MATERIAL:  
HOUSING: HIGH TEMPERATURE THERMOPLASTIC, UL94V-0, BLACK.  
CONTACT: COPPER ALLOY  
CONTACT PLATING: UNDERPLATE WITH NICKEL,  
0.76 MICROMETER MINIMUM HARD GOLD IN MATING REGION,  
PURE MATTE TIN AT SOLDER TAIL.
- ELECTRICAL SPECIFICATION:  
CONTACT RESISTANCE: 15 MILLIOHM MAXIMUM.  
INSULATOR RESISTANCE: 100 MEGOHM MINIMUM.  
DIELECTRIC WITHSTANDING VOLTAGE: 500V AC.
- MATING EDGE CARD THICKNESS: 1.57±0.16 MILLIMETER.



PART NO.	DUAL POSN N	PIN OUT	KEY	DIMENSIONS								
				A	B	C	D	E	F	G	H	J
11216-017	17	No Key	No Key	18.20	15.00	-	-	12.80	15.80	14.85 +/- .08	-	-
11216-018	18	No Key	No Key	19.00	15.80	-	-	13.60	16.60	15.40 +/- .05	-	-
11216-025	25	6/19		27.80	24.60	7.10	8.00	22.40	25.40	24.45	6.000	7.03
11216-032	32	18/14		33.40	30.20	16.70	17.60	28.00	31.00	31.65	15.600	16.63
11216-034	34	No Key	No Key	31.80	28.60	-	-	26.40	29.40	28.40 +/- .05	-	-
11216-040	40	22/18		39.80	36.60	19.90	20.80	34.40	37.40	36.45	18.800	19.83
11216-050	50	27/23		47.80	44.60	23.90	24.80	42.40	45.40	44.45	22.800	23.83
11216-060	60	32/28		55.80	52.60	27.90	28.80	50.40	53.40	52.45	26.800	27.83
11216-070	70	32/38		63.80	60.60	27.90	28.80	58.40	61.40	60.45	26.800	27.83
11216-080	80	32/48		71.80	68.60	27.90	28.80	66.40	69.40	68.45	26.800	27.83
11216-090	90	32/58		79.80	76.60	27.90	28.80	74.40	77.40	76.45	26.800	27.83
11216-100	100	32/68		87.80	84.60	27.90	28.80	82.40	85.40	84.45	26.800	27.83



THIS DOCUMENT CONTAINS CONFIDENTIAL AND PROPRIETARY INFORMATION OF AMPHENOL INTERCON SYSTEMS AND MAY NOT BE DISCLOSED, REPRODUCED OR OTHERWISE USED WITHOUT WRITTEN PERMISSION.

ALL DIMENSIONS AND TOLERANCES PER ASME Y14.5M-2009  
ALL DIMENSIONS ARE IN MILLIMETERS UNLESS OTHERWISE SPECIFIED

THIRD ANGLE PROJECTION

INSPECTION  
◇ FIRST PIECE  
△ SPC  
○ IN-PROCESS

TOLERANCES UNLESS SPECIFIED OTHERWISE  
1PLC ± 0.3  
2PLC ± 0.13  
3PLC ± 0.050  
ANGLES ± 1°

MATERIAL [1] FINISH [2]

**Amphenol InterCon Systems** AMPHENOL INTERCON SYSTEMS INC.  
HARRISBURG, PA 17110

NAME: **ENHANCED EDGE CARD ASSEMBLY, 0.8mm PITCH**

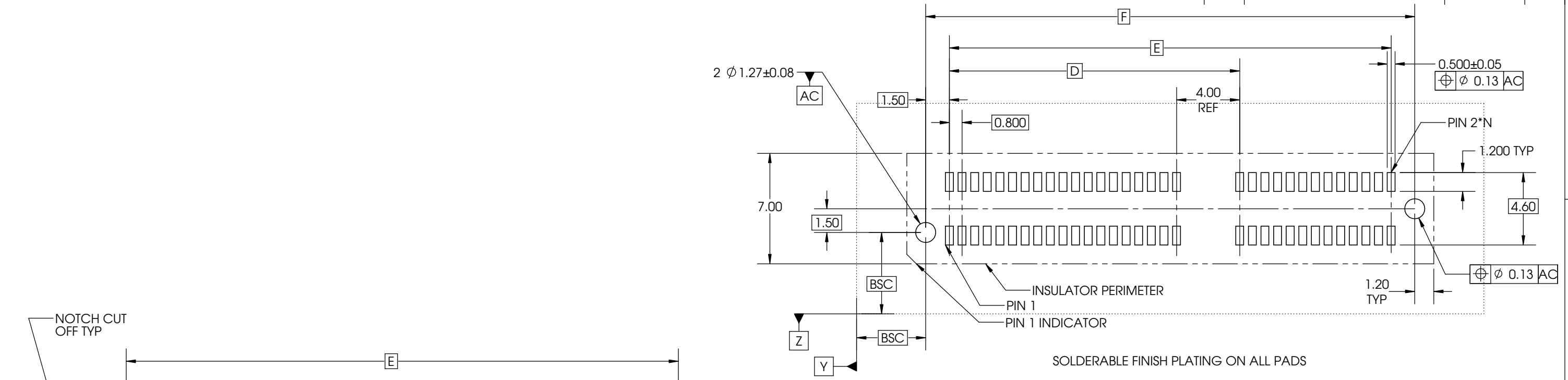
SIZE: **B** PROD CODE: 423 DRAWING NUMBER: **C- 11216** REV: 10

SCALE: 2:1 CUSTOMER SHEET 1 OF 2

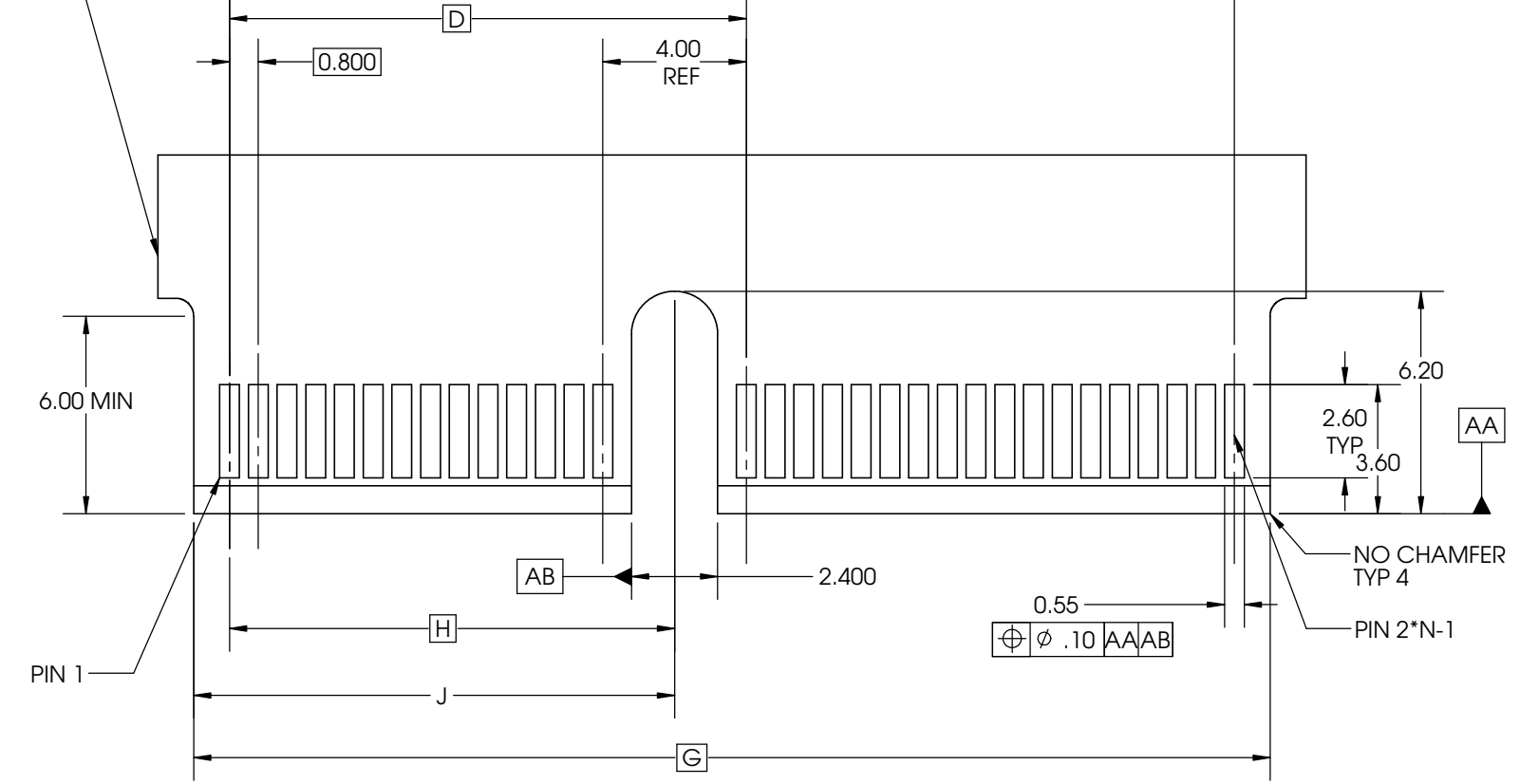
PART NUMBER

REVISIONS

REV	DESCRIPTION	DATE	DWN
10	SEE SHEET 1		

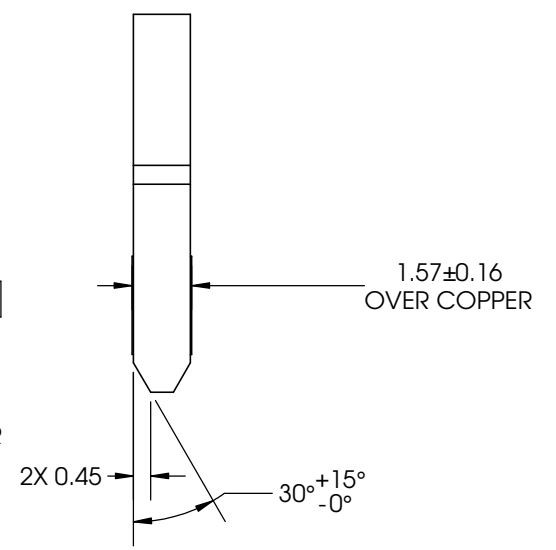


**RECOMMENDED CONNECTOR FOOTPRINT LAYOUT  
COMPONENT SIDE SHOWN**



FINISH PLATING: 0.75 MICROMETER MINIMUM HARD GOLD PER ASTM B 488 TYPE 2, GRADE C  
UNDERPLATE: 1.25 MICROMETER MINIMUM NICKEL.

**RECOMMENDED MATING CARD LAYOUT**



THIS DOCUMENT CONTAINS CONFIDENTIAL AND PROPRIETARY INFORMATION OF AMPHENOL INTERCON SYSTEMS AND MAY NOT BE DISCLOSED, REPRODUCED OR OTHERWISE USED WITHOUT WRITTEN PERMISSION	
ALL DIMENSIONS AND TOLERANCES PER ASME Y14.5M-2009	THIRD ANGLE PROJECTION
ALL DIMENSIONS ARE IN MILLIMETERS UNLESS OTHERWISE SPECIFIED	
INSPECTION	TOLERANCES UNLESS SPECIFIED OTHERWISE
◇ FIRST PIECE	1PLC ± 0.13
△ SPC	2PLC ± 0.05
○ IN-PROCESS	3PLC ± 0.025
	ANGLES ± 1°

**Amphenol** AMPHENOL INTERCON SYSTEMS INC.  
HARRISBURG, PA 17110

NAME <b>ENHANCED EDGE CARD ASSEMBLY, 0.8mm PITCH</b>			
SIZE <b>B</b>	PROD CODE 423	DRAWING NUMBER C- 11216	REV 10
SCALE 5:1	CUSTOMER	SHEET 2	OF 2

**METRIC**

# Mouser Electronics

Authorized Distributor

Click to View Pricing, Inventory, Delivery & Lifecycle Information:

[Amphenol:](#)

[11216-040](#) [11216-070](#) [11216-050](#) [11216-100](#) [11216-080](#) [11216-034](#) [11216-060](#) [11216-025](#)