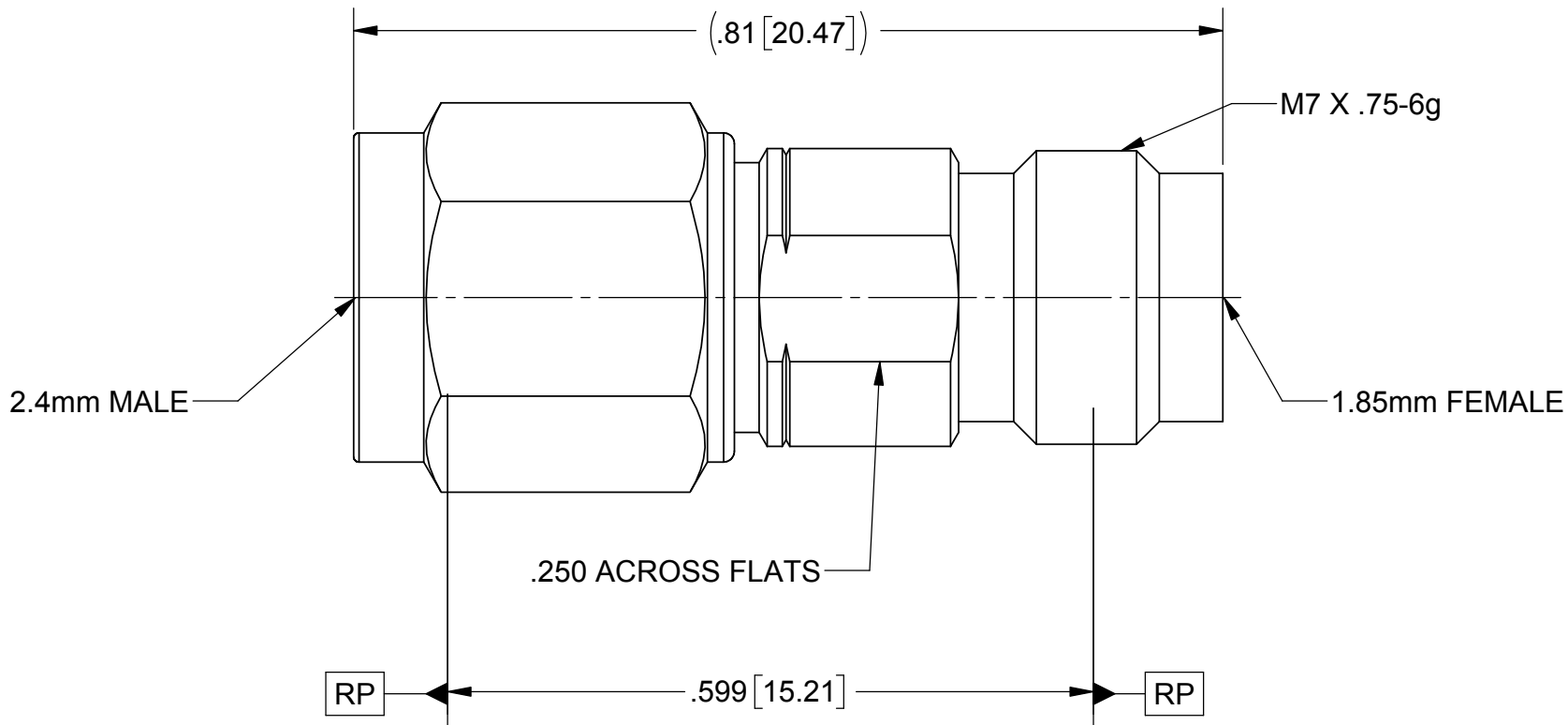
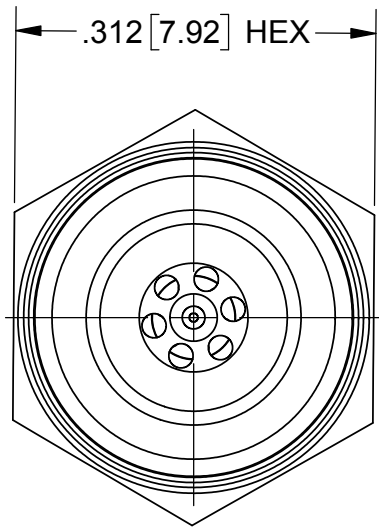


ROHS COMPLIANT

# PRODUCT DATA DRAWING

REVISION HISTORY			
REV	DESCRIPTION	DATE	APPROVED
-	PRELIMINARY	03/21/07	JMC
-	REL. NRN 41789	09/05/17	STW



**MATERIAL:**

## BODY & COUPLING NUT:

STAINLESS STEEL PER AMS-5640, ALLOY UNS S30300, TYPE 1  
OR ASTM A582, TYPE 303, CONDITION A.

LOCK RING &  
CONTACT:

BERYLLIUM COPPER PER ASTM B196, ALLOY No. UNS C17300, TD04.

DIELECTRIC BEAD:

PEI (ULTEM 1000) PER ASTM D5205.

## FINISH:

**BODY:**

PASSIVATED PER AMS 2700.

CONTACTS:

GOLD PER ASTM B488, TYPE II, CODE C, CLASS 1.27,  
OVER NICKEL PER AMS-QQ-N-290, CLASS 1, .00005" MIN.

## PERFORMANCE:

IMPEDANCE:

50 OHMS

FREQ. RANGE:

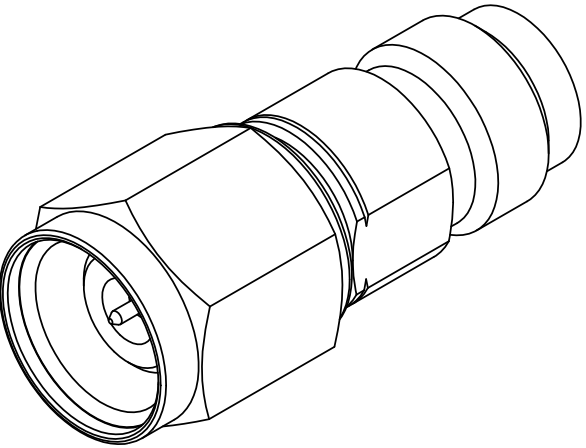
DC TO 50 GHz


INS. LOSS:  
VOWEL

0.40dB MAX.  
1.00dB MAX.

VSWR:

1.30:1 MAX. AT 50 GHz



MATERIAL:	SEE NOTES	DIMENSIONS ARE IN INCHES TOLERANCES:	UNLESS OTHERWISE SPECIFIED		SV Microwave, Inc.		
FINISH:	SEE NOTES	FRACTIONAL: ±1/64    ANGULAR: X° ±1'0" X°X' ±15'	1) ALL DIMENSIONS ARE IN INCHES [MILLIMETERS] 2) ALL DIMENSIONS ARE AFTER PLATING. 3) BREAK CORNERS & EDGES .005 R. MAX. 4) CHAM. 1ST & LAST THREADS. 5) SURFACE ROUGHNESS 63-MIL-STD-10. 6) DIA. 'S ON COMMON CENTERS TO BE CONCENTRIC WITHIN .005 T.I.R. 7) REMOVE ALL BURRS		2400 Centrepark West Drive, Suite 100 West Palm Beach, FL 33409		
SURFACE AREA:	N/A	DECIMAL: .X    ±.030 .XX    ±.010 .XXX ±.005			TITLE: ADAPTER		
PROPRIETARY		INTERPRET DIMENSIONS AND TOLERANCES PER ASME Y14.5M - 1994			1.85mm FEMALE TO 2.4mm MALE		
THE INFORMATION CONTAINED IN THIS DRAWING IS THE SOLE PROPERTY OF SV MICROWAVE, INC. ANY REPRODUCTION IN PART OR AS A WHOLE WITHOUT THE WRITTEN PERMISSION OF SV MICROWAVE, INC IS PROHIBITED.		THIRD ANGLE PROJECTION	DRAWN: MMH 03/21/07		SIZE	CAGE CODE	DWG. NO.
			CHECKED: JMC 03/21/07		B	95077	SF1133-6005
			APPROVED: JMC 03/21/07		SCALE: 6:1		SHEET 1 OF 1

# Mouser Electronics

Authorized Distributor

Click to View Pricing, Inventory, Delivery & Lifecycle Information:

[Amphenol:](#)

[SF1133-6005](#)