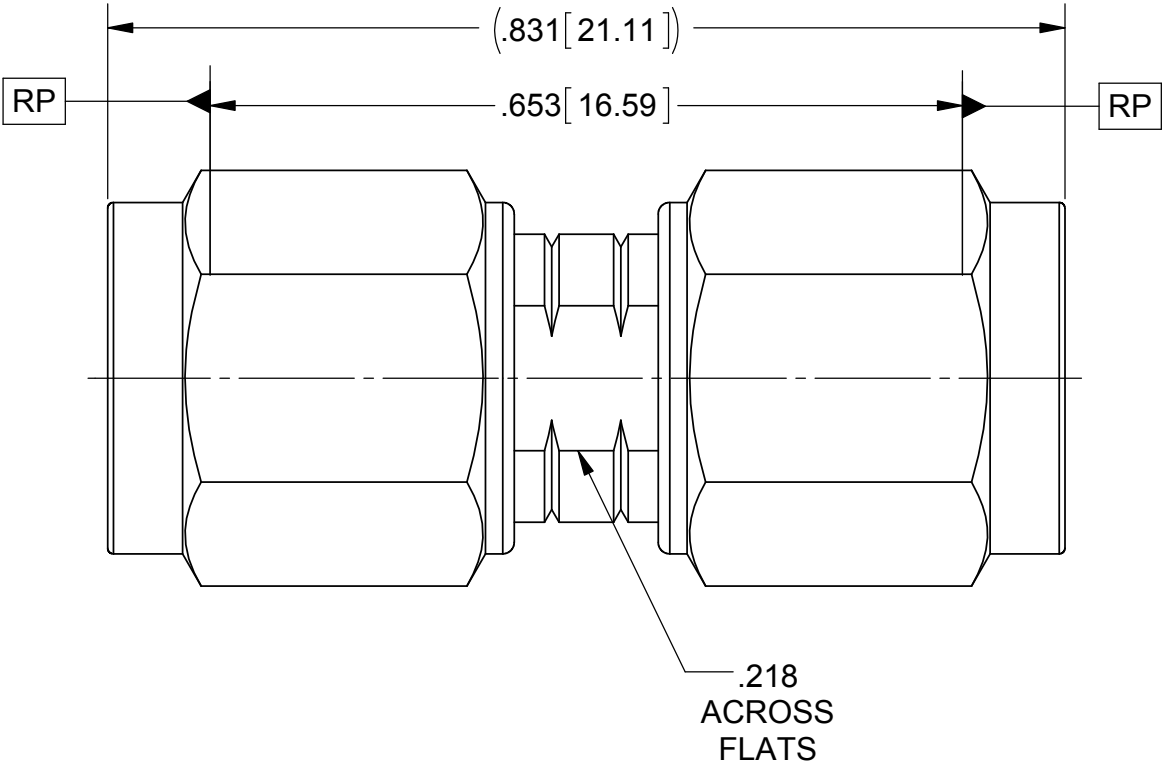
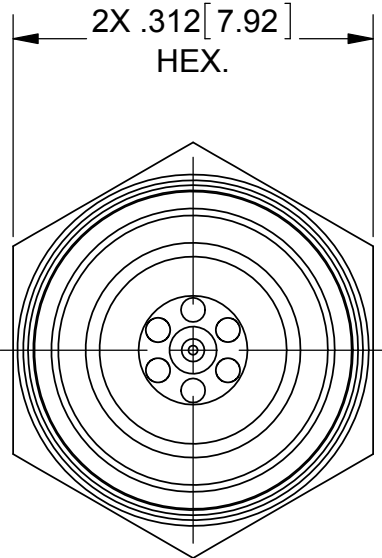


ROHS COMPLIANT

PRODUCT DATA DRAWING

REVISION HISTORY			
REV	DESCRIPTION	DATE	APPROVED
01	PRELIMINARY	08/12	STW
-	REL. NRN 37890	12/30/12	STW
A	DCN 40984	12/14	STW



MATERIAL:

BODY, INSERTS &
COUPLING NUT:

STAINLESS STEEL PER AMS-5640,
ALLOY UNS S30300, TYPE 1

LOCK RING &
CONTACT:

BERYLLIUM COPPER PER ASTM B196,
ALLOY No. UNS C17300, TD04

BEADS:

POLYETHERIMIDE "ULTEM" PER ASTM D5205

GASKET:

SILICONE RUBBER PER A-A-59588,
CLASS 2B, GRADE 50/60

FINISH:

BODY, INSERTS, &
COUPLING NUT:

PASSIVATED PER AMS-2700.

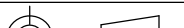
CONTACT:

GOLD PER ASTM B488, TYPE II,
CODE C, CLASS 1.27, OVER NICKEL
PER AMS-QQ-N-290, CLASS 1, .00005" MIN.

PERFORMANCE:

IMPEDANCE: 50 OHMS
FREQ. RANGE: DC TO 50.0 GHz
VSWR: 1.11:1 MAX. DC TO 18GHz

INSERTION LOSS: .07 X SQRT (F(F IN GHz))

MATERIAL:	SEE NOTES	DIMENSIONS ARE IN INCHES TOLERANCES:	UNLESS OTHERWISE SPECIFIED		<div>SV Microwave, Inc.</div> <div>2400 Centrepark West Drive, Suite 100 West Palm Beach, FL 33409</div> <div>TITLE: 2.4mm PLUG TO PLUG ADAPTER</div>			
FINISH:	SEE NOTES	FRACTIONAL: ±1/64 ANGULAR: X° ±1°0' X°X' ±15'	1) ALL DIMENSIONS ARE IN INCHES [MILLIMETERS] 2) ALL DIMENSIONS ARE AFTER PLATING. 3) BREAK CORNERS & EDGES .005 R. MAX. 4) CHAM. 1ST & LAST THREADS. 5) SURFACE ROUGHNESS 32-1 MIL.-STD-10. 6) DIA. 'S ON COMMON CENTERS TO BE CONCENTRIC WITHIN .005 T.I.R. 7) REMOVE ALL BURRS					
SURFACE AREA:	N/A	DECIMAL: .X ±.030 .XX ±.010 .XXX ±.005						
<div>PROPRIETARY</div> <div>THE INFORMATION CONTAINED IN THIS DRAWING IS THE SOLE PROPERTY OF SV MICROWAVE, INC. ANY REPRODUCTION IN PART OR AS A WHOLE WITHOUT THE WRITTEN PERMISSION OF SV MICROWAVE, INC IS PROHIBITED.</div>		INTERPRET DIMENSIONS AND TOLERANCES PER ASME Y14.5M - 1994						
		THIRD ANGLE PROJECTION	DRAWN:		ELA		08/10/12	
			CHECKED:		STW		08/10/12	
			APPROVED:		STW		08/10/12	
					SIZE	CAGE CODE	DWG. NO.	
					B	95077	SF1116-6039	
					SCALE: 6:1		SHEET 1 OF 1	

Mouser Electronics

Authorized Distributor

Click to View Pricing, Inventory, Delivery & Lifecycle Information:

[Amphenol:](#)

[SF1116-6039](#)