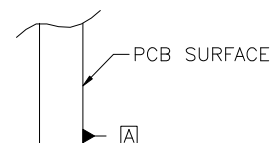
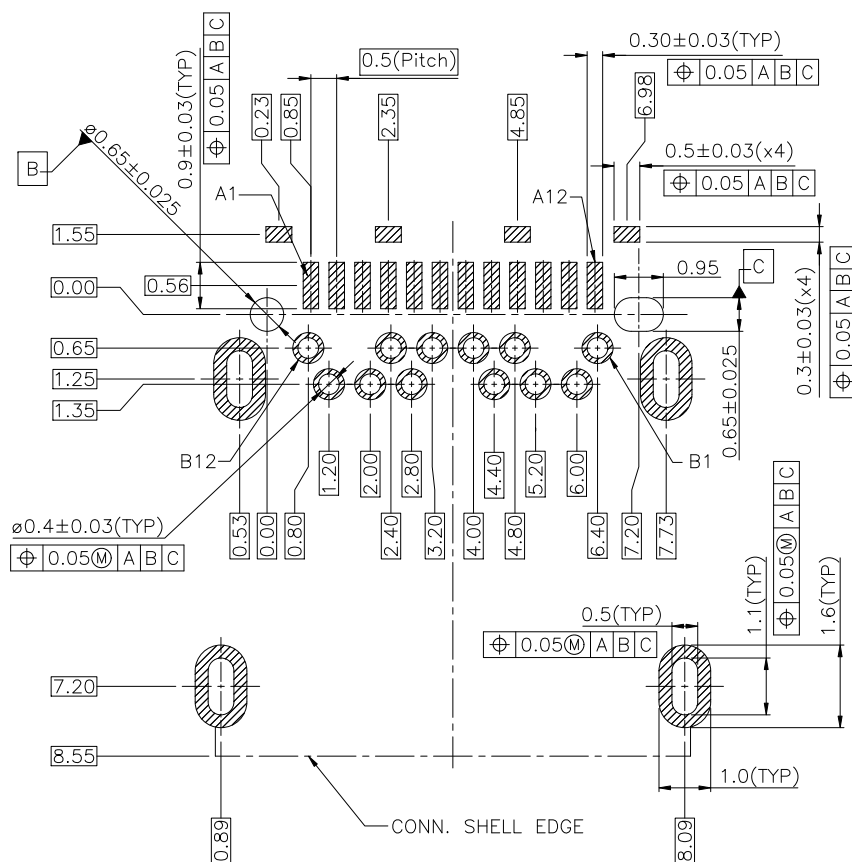


⑥	TOP CONTACT	1 SET	COPPER ALLOY	Ni UNDER PLATING. MATTE TIN PLATING ON SOLDER AREA.
⑤	BOTTOM CONTACT	1 SET	COPPER ALLOY	GOLD PLATING ON CONTACT AREA. (SEE P/N SCHEME)
④	SHIELDING PLATE	1 PCS	STAINLESS	Ni PLATING OVERALL.
③	HOUSING	1 PCS	THERMOPLASTIC	UL94V-0, BLACK
②	SHELL	1 PCS	STAINLESS	Ni PLATING OVERALL.
①	TOP SHELL	1 PCS	STAINLESS	Ni PLATING OVERALL.
ITEM	PART NAME	QTY	MATERIAL	REMARK

mat'l. code				surface		tolerance	projection	product family	
				✓				USB	
ltr	ecn no	dr	date	tolerances unless otherwise specified					
A		TAI	2015-10-16	angles	linear	±0.3		title	
								USB 3.1 TYPE C RECEPTACLE	
				X°±3°			scale	R/A, SMT AND DIP TAILS	
				dr	KENNY TAI	2015-09-21		dwg no	
				enrg	KENNY TAI	2015-09-21		sheet 1 of 2	
				chr	KENNY TAI	2015-09-21		size	
				appd	PM ZHENG	2015-10-16		A4	
sheet index		revision sheet		A	1	A	2	10137060	
								CUSTOMER Drawing	

PRODUCT NUMBER

SEE PART NO. SCHEME



PIN	SIGNAL NAME	PIN	SIGNAL NAME
A1	GND	B12	GND
A2	SSTXp1	B11	SSRXp1
A3	SSTXn1	B10	SSRXn1
A4	VBUS	B9	VBUS
A5	CC1	B8	SBU2
A6	Dp1	B7	Dn2
A7	Dn1	B6	Dp2
A8	SBU1	B5	CC2
A9	VBUS	B4	VBUS
A10	SSRXn2	B3	SSTXn2
A11	SSRXp2	B2	SSTXp2
A12	GND	B1	GND

## NOTES :

## 1. ELECTRICAL :

1-1. CONTACT CURRENT RATING:

5.0A FOR VBUS AND GND.

(i.e., Pins A4,A9,B4,B9)

1.25A FOR Vconn AND GND.

(i.e., Pins B5,A1,A12,B1,B12)

0.25A FOR ALL THE OTHERS CONTACTS.

1-2. INSULATION RESISTANCE:

100 MEGAOHMS MIN. AT 250VDC.

1-3. DIELECTRIC WITHSTANDING VOLTAGE:

100VAC MIN.

1-4. LOW LEVEL CONTACT RESISTANCE:

INITIAL: 40mΩ MAX.; AFTER ENVIRONMENTAL TEST: MAX. CHANGE 10mΩ.

## 2. MECHANICAL CHARACTERISTICS:

2-1. INSERTION FORCE:

5N~20N.

2-2. EXTRACTION FORCE:

8N~20N FROM 1 TO 1000 CYCLES

6~20N FROM 1001 TO 10000 CYCLES.

2-3. DURABILITY :

10,000 MATING CYCLES.

2-4. OPERATING TEMPERATURE:

-55°C TO +85°C

3. CAPABLE TO 260°C REFLOW SOLDER FOR 10 SEC.

4. PRODUCT SPECIFICATION: GS-12-1336

5. PACKAGE SPECIFICATION: GS-14-2487

## PART NUMBER SCHEME:

10137060-000 X X LF

CONTACT PLATING  
1. GOLD FLASH  
2. 30u" AuPACKAGING  
1. TAPE AND REEL

mat'l. code				surface	tolerance	projection	product family		
ltr	ecn	no	dr	date	tolerances unless otherwise specified		USB		
					angles	linear	title		
					$X^{\circ} \pm 3^{\circ}$	MM	USB 3.1 TYPE C RECEPTACLE		
						scale	R/A, SMT AND DIP TAILS		
					dr	KENNY TAI	2015-09-21	dwg no	sheet 2 of 2
					enr	KENNY TAI	2015-09-21	10137060	A4
					chr	KENNY TAI	2015-09-21	type	
					appd	PM ZHENG	2015-10-16	CUSTOMER Drawing	
sheet index	revision sheet	A	A	1	2				

# Mouser Electronics

Authorized Distributor

Click to View Pricing, Inventory, Delivery & Lifecycle Information:

[FCI / Amphenol:](#)

[10137060-00021LF](#)