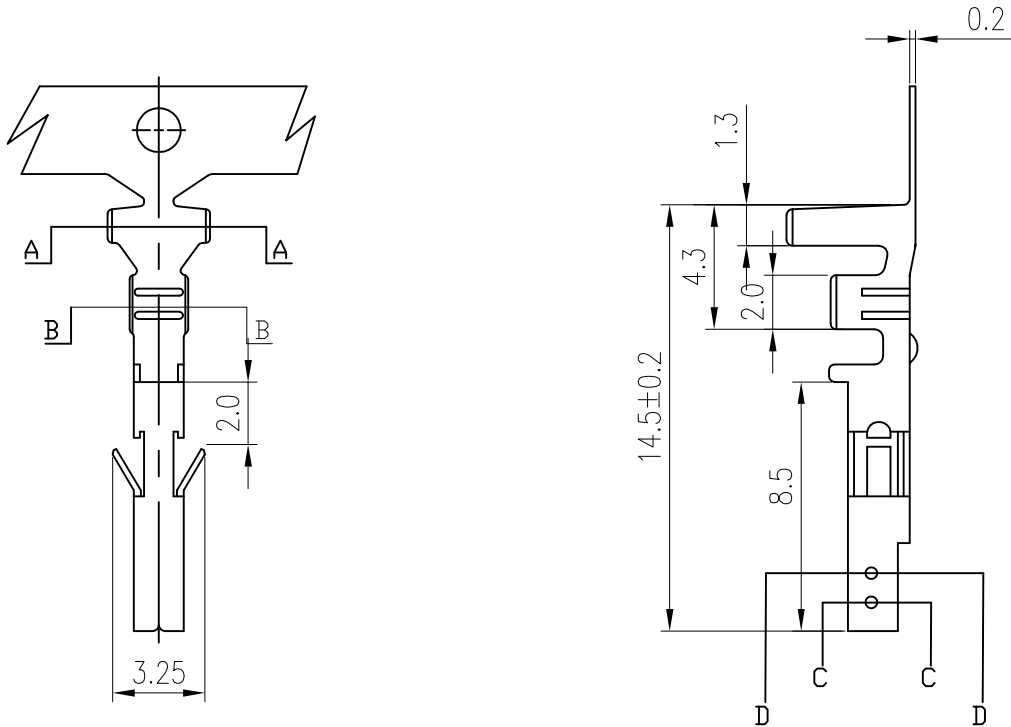


PRODUCT NUMBER

SEE PART NO. TABLE



## NOTES:

1. MATERIAL: SEE ITEM 5L.
2. THIS TERMINAL IS USED WITH FCI RECEPTACLE HSG 10129815.
3. PRODUCT SPECIFICATION: GS-12-1288.
4. PACKAGE SPECIFICATION: GS-14-2450.
5. PART NUMBER SCHEME:  
10129084- X X X LF

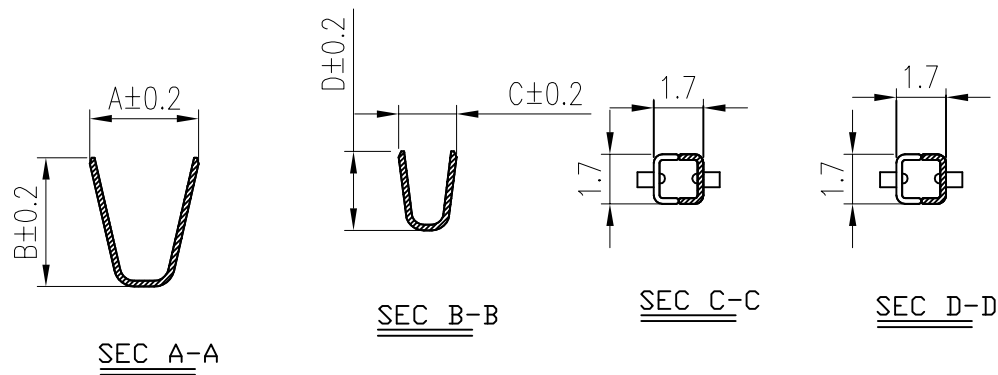
APPLICABLE AWG:  
1. AWG #16~#22  
2. AWG #24~#28

PLATING CODE:  
1: GOLD FLASH  
2: TIN

MATERIAL CODE:  
1: PHOSPHORUS BRONZE  
2: BRASS  
3: HIGH CONDUCTIVITY COPPER

## 6. DIMENSIONAL &amp; PART NO. TABLE:

PART NO.	A	B	C	D	APPLICABLE WIRES
10129084-XX2LF	3.2	3.4	1.8	2.2	#24~#28
10129084-XX1LF	3.7	4.5	1.8	2.7	#16~#22



PRELIMINARY

mat'l. code				surface	tolerance	projection	product family			
ltr	ecn no	dr	date	tolerances unless otherwise specified			title			
				angles	linear		RECEPTACLE TERMINAL FOR 4.2mm PITCH WIRE CONNECTOR			
				X.X ±0.40	X.XX ±0.30	MM				
				X'±1'		scale	dwg no			
				dr	JESSIE WU	2015-01-04	sheet 1 of 1			
				enr	JESSIE WU	2015-01-04	10129084			
				chr	FANCY ZHANG	2015-01-04	type			
				appd	PM ZHENG	2015-01-04				
sheet	revision	1					Customer Drawing			
Index	sheet	1								

# Mouser Electronics

Authorized Distributor

Click to View Pricing, Inventory, Delivery & Lifecycle Information:

[FCI / Amphenol:](#)

[10129084-211LF](#)