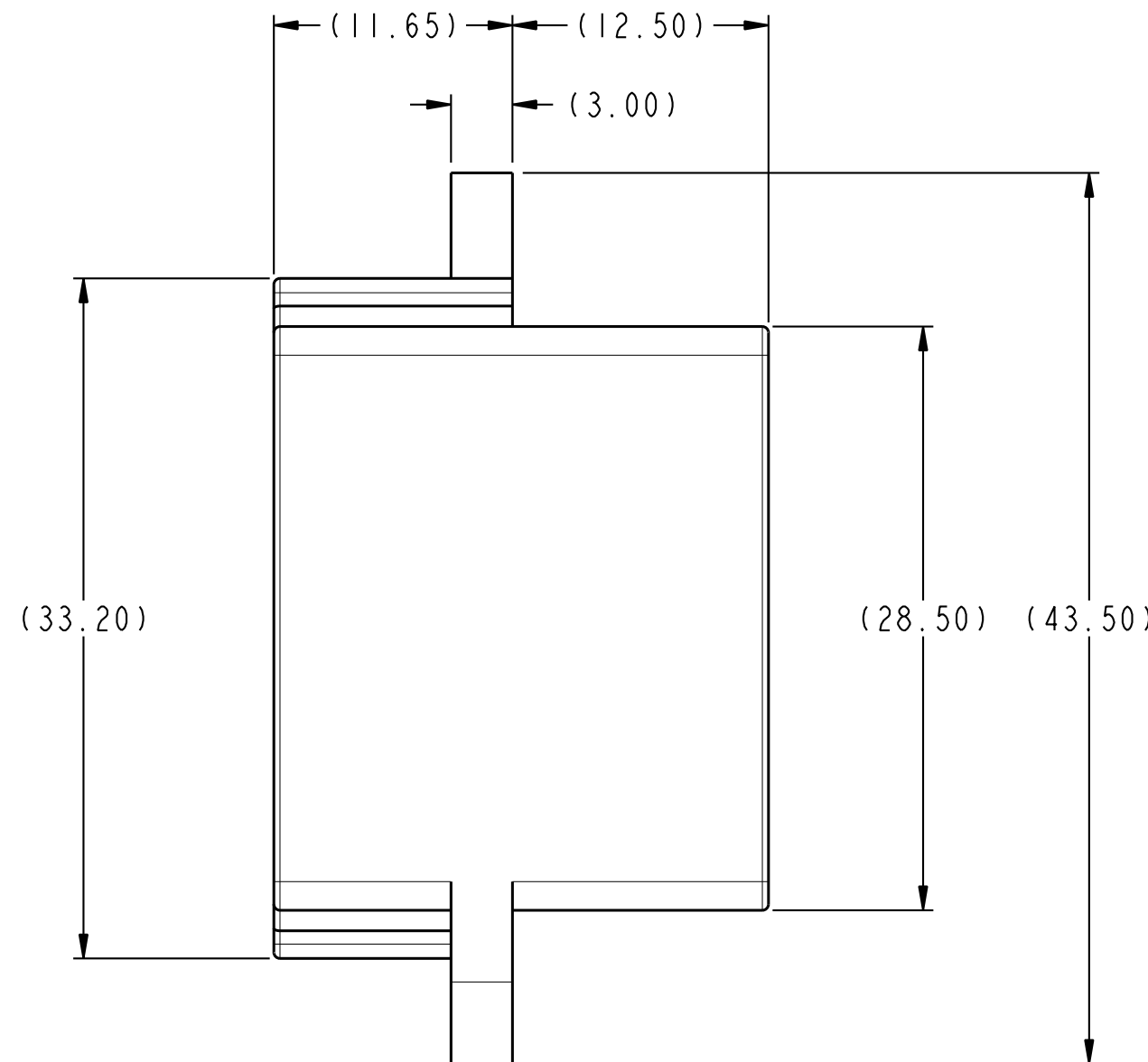
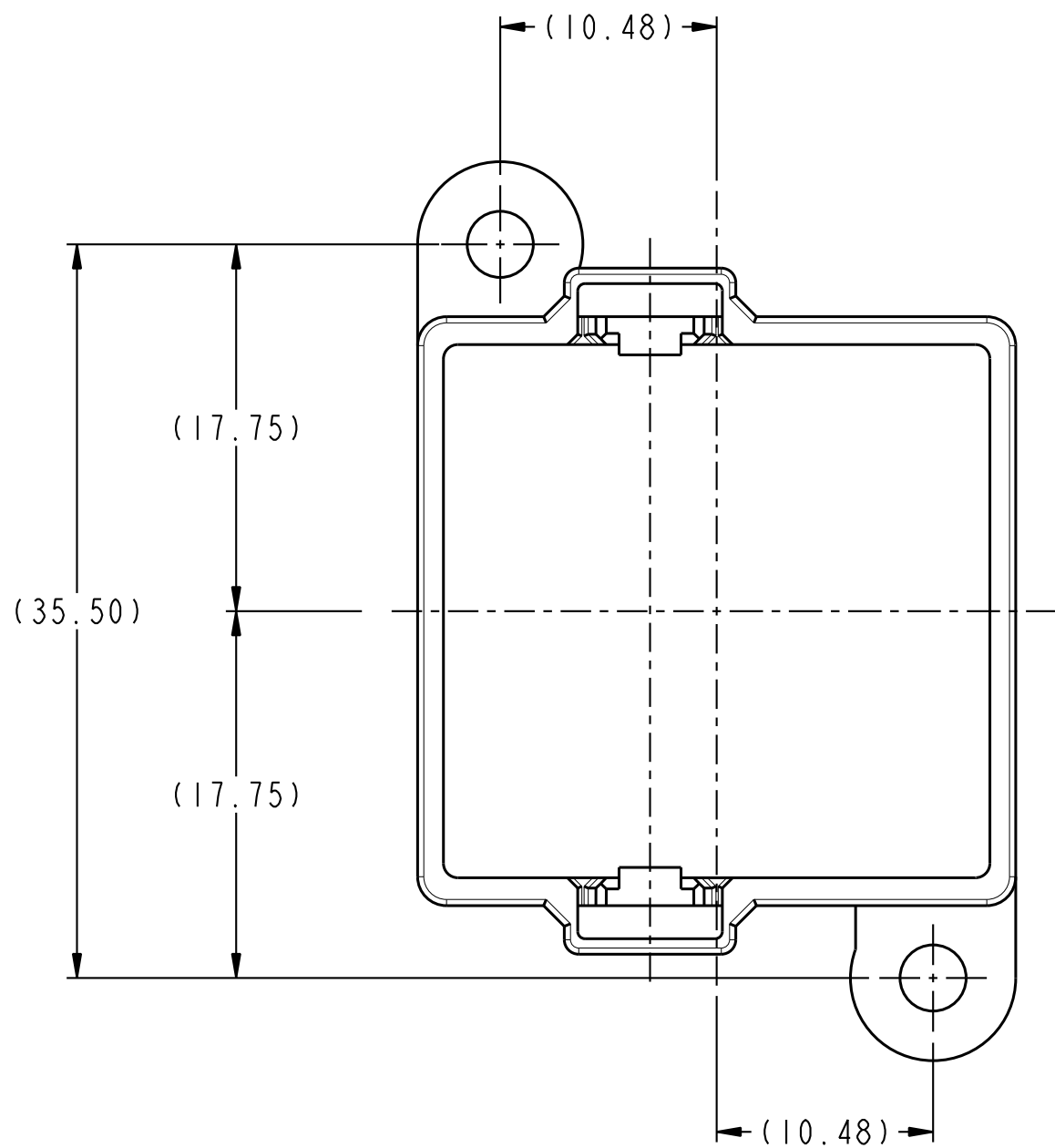
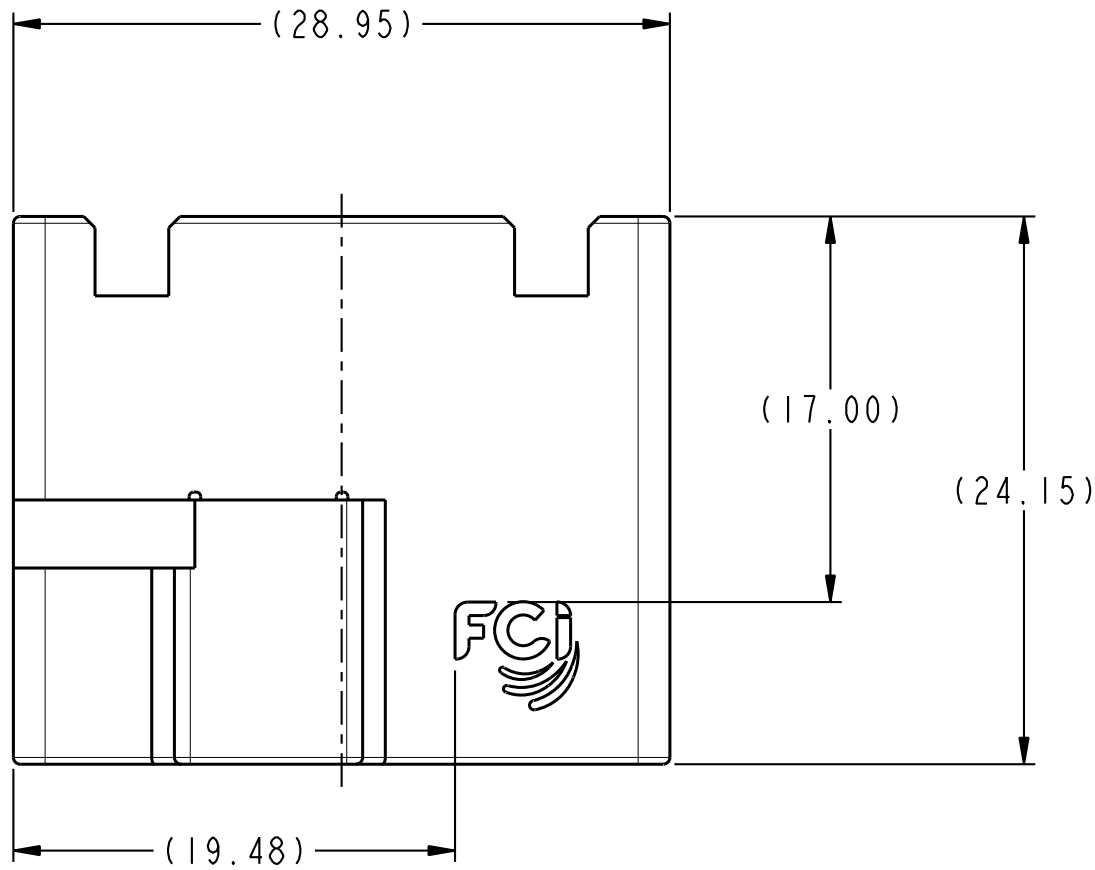
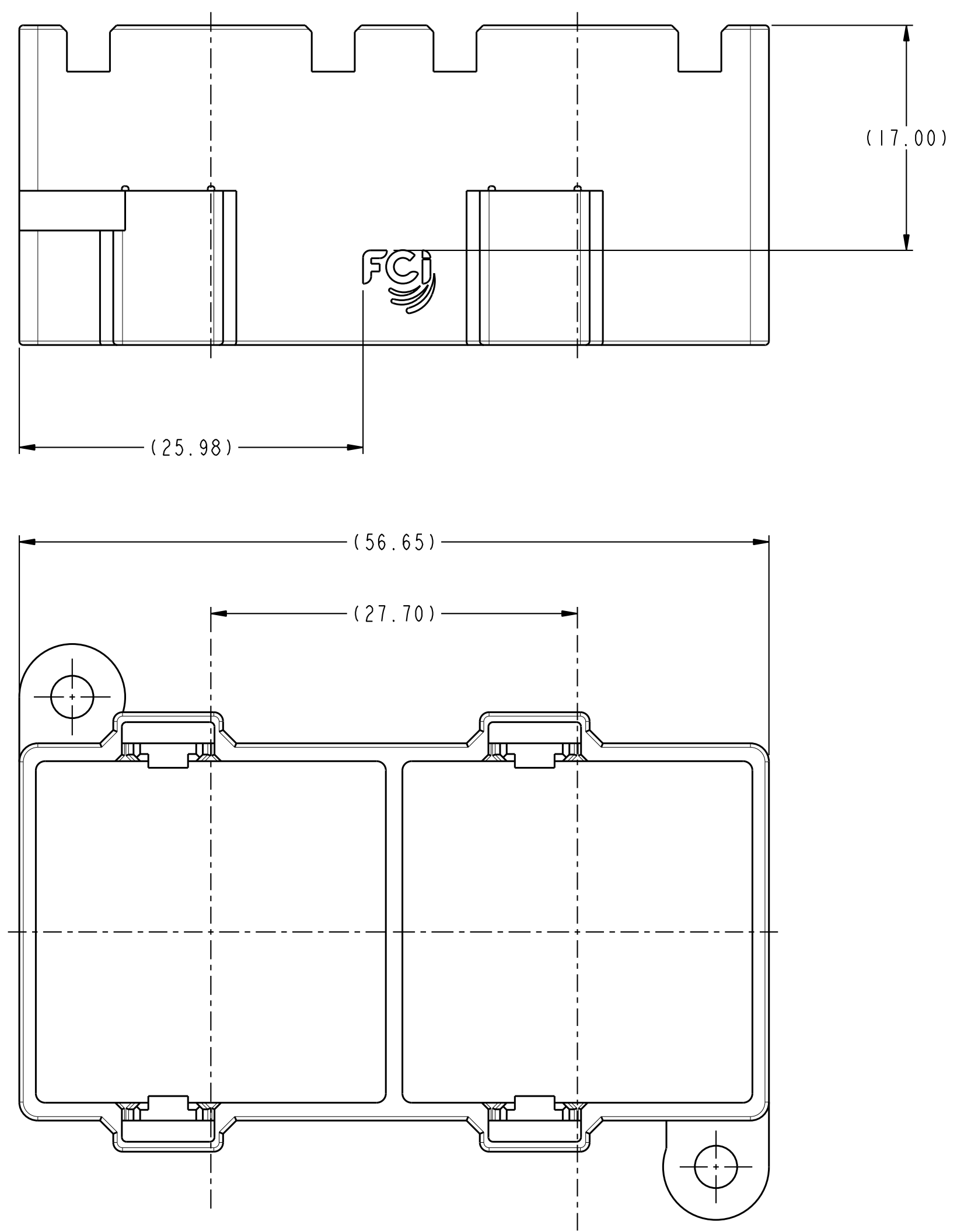


PRODUCT NUMBER	DESCRIPTION
10127037-101	1 PORT RETENTION FRAME



spec ref				-		dr		D. HUMBERT		2014-06-10		projection		MM		size		A2		scale		3:1			
tolerance std				-		eng		D. LORD		2014-06-10						ecn no		rel level		In Work					
ASME Y14.5M				TOLERANCES UNLESS OTHERWISE SPECIFIED		chr		D. LORD		2014-06-10															
				appr		D. LORD		2014-06-10																	
surface						linear		0.X		±				title		PANEL RETENTION BRACKET		dwg no		10127037		rev		I	
				0.XX		±																			
				0.XXX		±																			
ASME Y14.5				angular		0°		±°		www.fci.com		cat. no.		-		Product - Customer Drw		sheet 1 of 6							

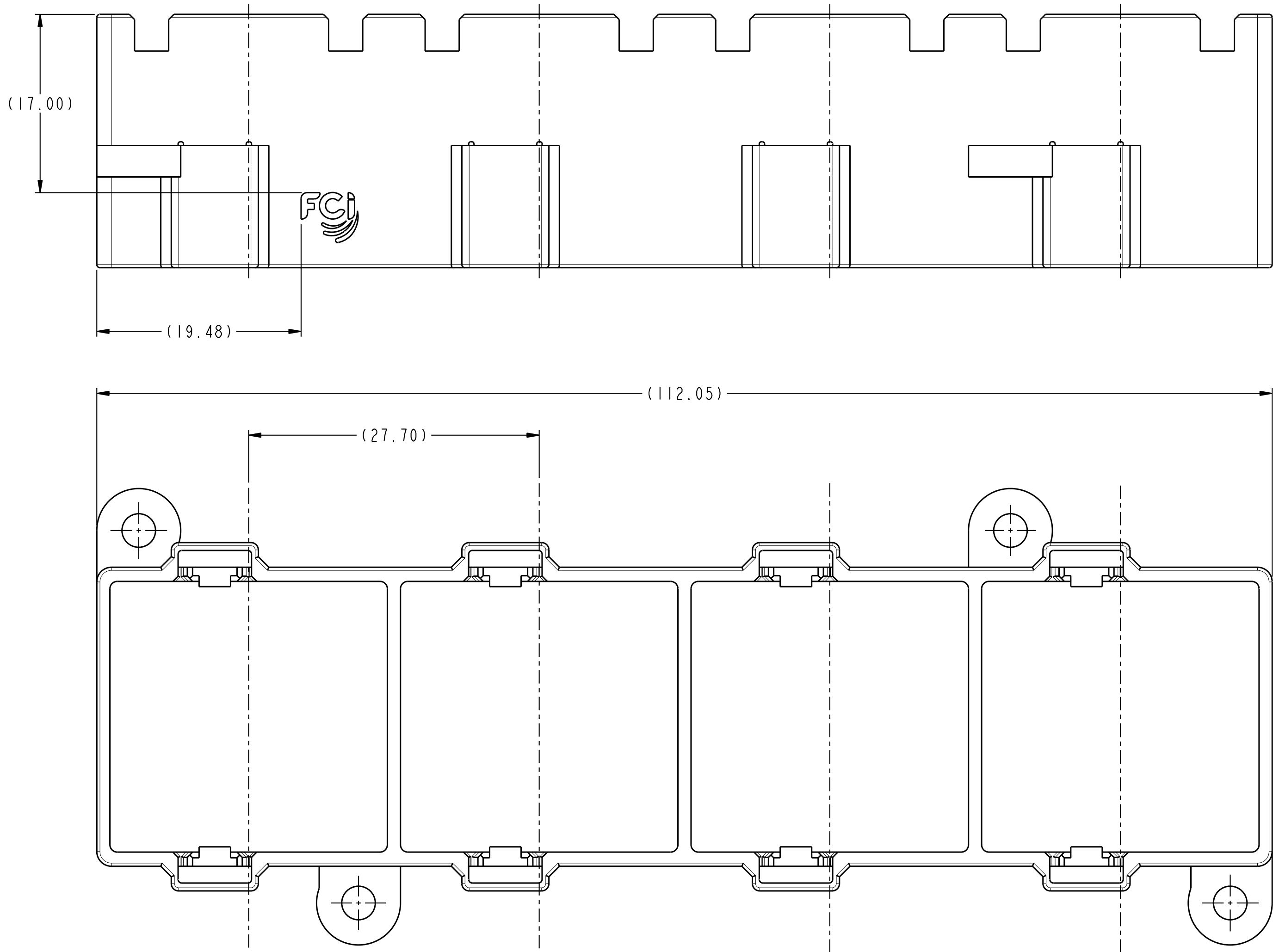
PRODUCT NUMBER	DESCRIPTION
10127037-102	2 PORT RETENTION FRAME






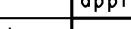
DIMENSIONS SHOWN FOR 10127037-002
ALL OTHER DIMENSIONS CARRY OVER

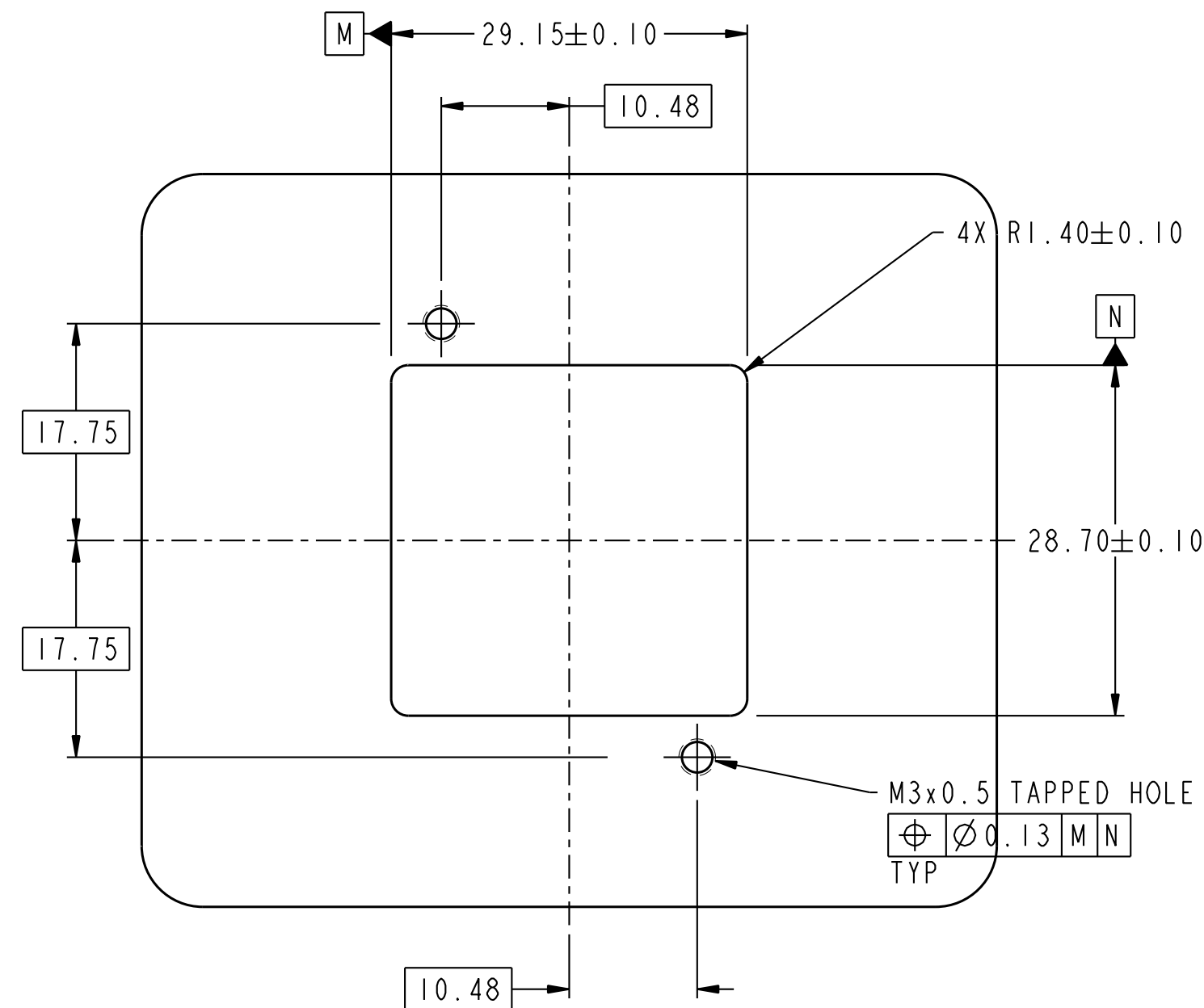
spec ref		-		dr		D. HUMBERT		2014-06-10		projection		MM		size		A2		scale		3:1			
tolerance std		-		eng		D. LORD		2014-06-10						ecn no		rel level		In Work					
ASME Y14.5M		TOLERANCES UNLESS OTHERWISE SPECIFIED		chr		D. LORD		2014-06-10															
				appr		D. LORD		2014-06-10															
										product family		EXAMAX I/O											
surface		✓		linear		0.X		±				title		PANEL RETENTION BRACKET		dwg no		10127037		rev		I	
				0.XX		±																	
				0.XXX		±																	
ASME Y14.5				angular		0°		±°		www.fci.com		cat. no.		-		Product - Customer Drw				sheet 2 of 6			

PRODUCT NUMBER	DESCRIPTION
10127037-104	4 PORT RETENTION FRAME

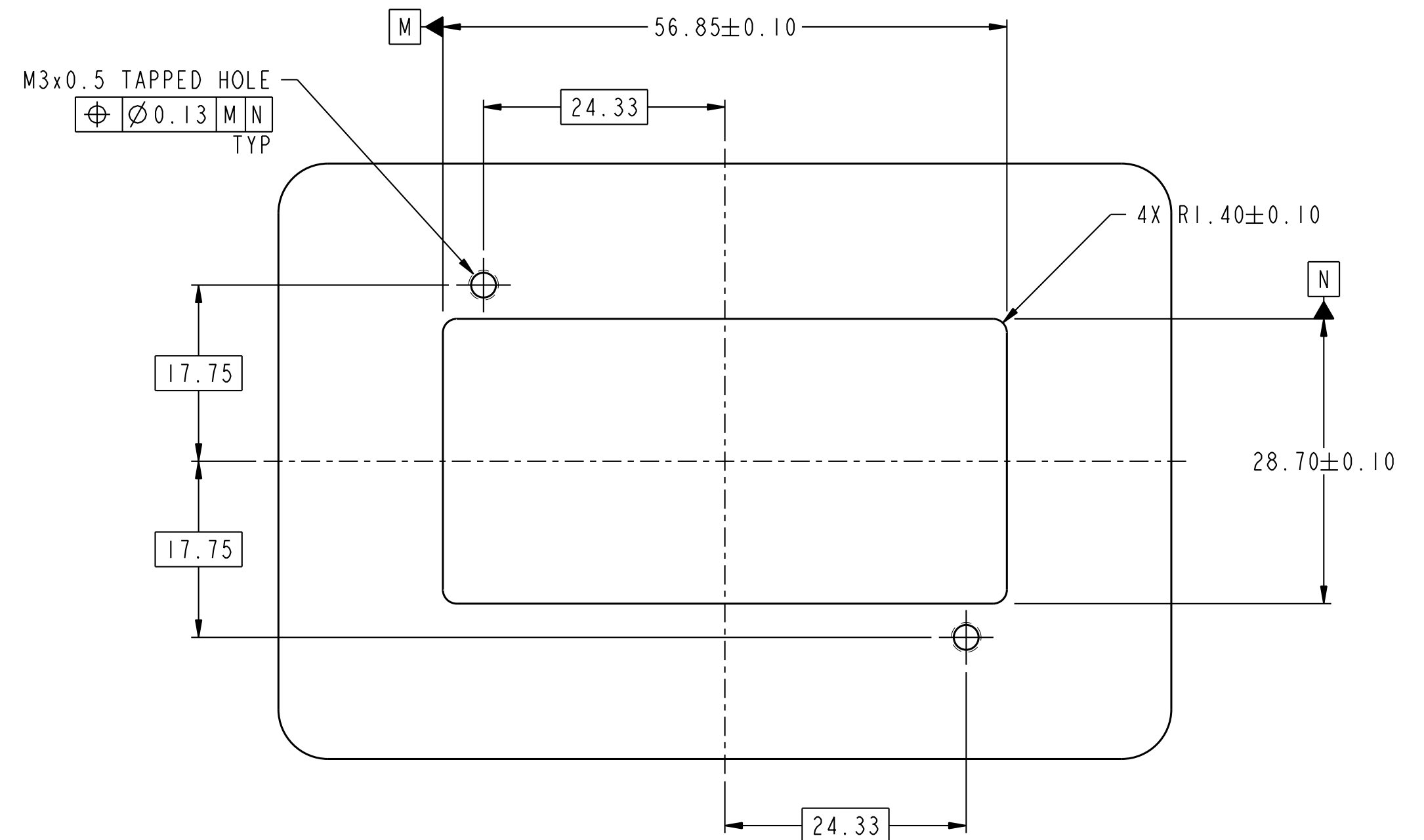


DIMENSIONS SHOWN FOR 10127037-004
ALL OTHER DIMENSIONS CARRY OVER



spec ref -		dr	D. HUMBERT	2014-06-10	projection 	MM 	size	A2	scale	3:1			
tolerance std -		eng	D. LORD	2014-06-10			ecn no	rel level	In Work				
ASME Y14.5M		chr	D. LORD	2014-06-10									
		appr	D. LORD	2014-06-10	product family		EXAMAX I/O						
surface 		linear	0.X	±		title	PANEL RETENTION BRACKET			dwg no	10127037	rev	I
			0.XX	±									
			0.XXX	±									
		angular	0°	±°									

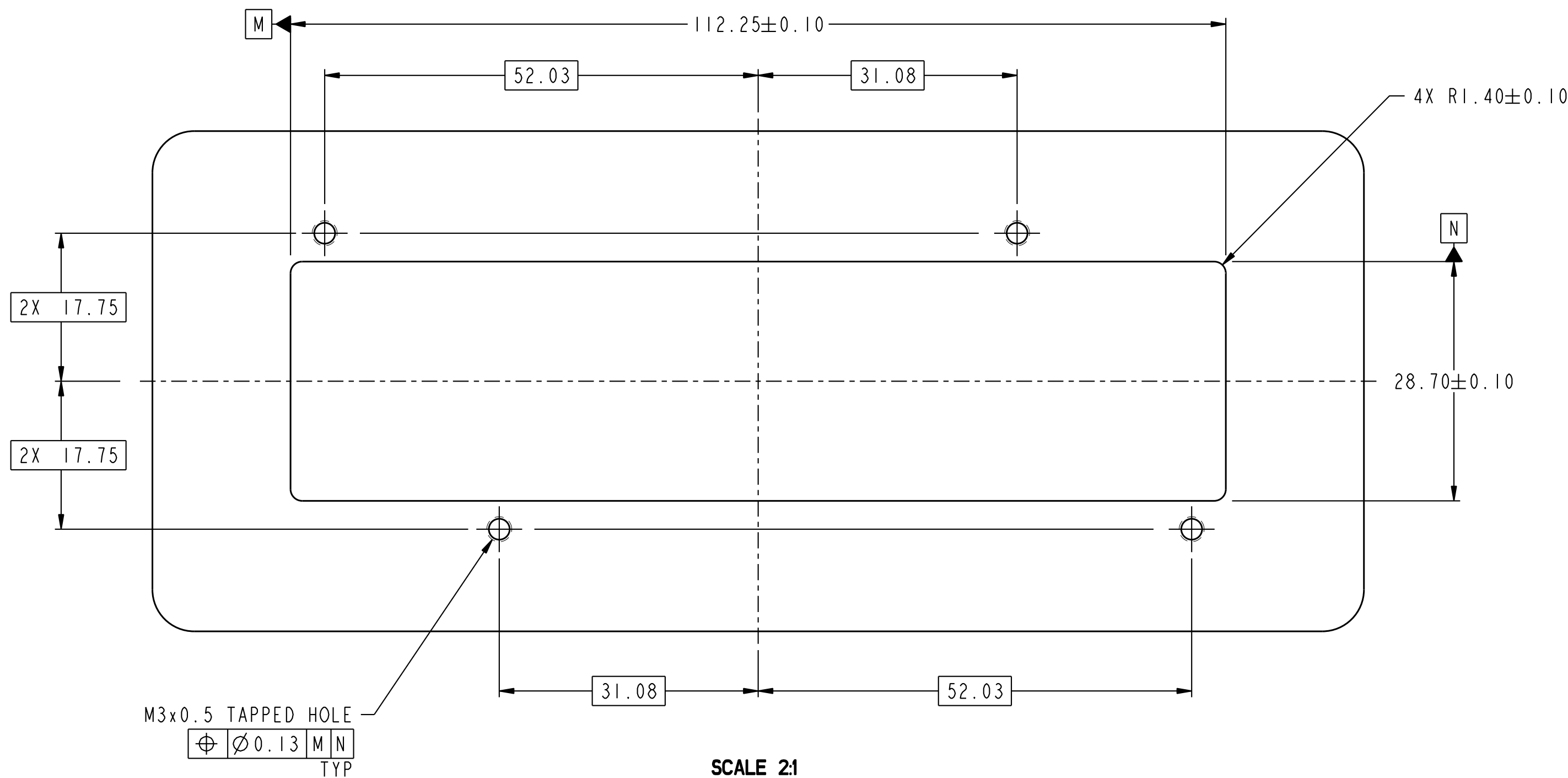


SCALE 2:1
BRACKET PANEL OPENING
DIMENSIONS SHOWN FOR 10127037-001

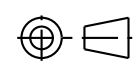

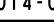



SCALE 2:1
BRACKET PANEL OPENING
DIMENSIONS SHOWN FOR 10127037-002

spec ref -				dr D. HUMBERT		2014-06-10		projection		MM		size A2		scale 3:1	
tolerance std -		TOLERANCES UNLESS OTHERWISE SPECIFIED		eng D. LORD		2014-06-10						ecn no		rel level In Work	
ASME Y14.5M				chr D. LORD		2014-06-10									
				appr D. LORD		2014-06-10									
								product family		EXAMAX I/O					



SCALE 2:1
BRACKET PANEL OPENING
DIMENSIONS SHOWN FOR 10127037-004

spec ref -		dr	D. HUMBERT	2014-06-10	projection 	MM 	size	A2	scale	1:1	
tolerance std -	TOLERANCES UNLESS OTHERWISE SPECIFIED	eng	D. LORD	2014-06-10			ecn no				
ASME Y14.5M		chr	D. LORD	2014-06-10							
		appr	D. LORD	2014-06-10	product family		-	rel level In Work			
surface 	linear	0.X	±		title		PANEL RETENTION BRACKET EXAMAX I/O 4-PR 8-COLUMN 2.0MM PITCH	dwg no	10127037		rev I
		0.XX	±								
		0.XXX	±								
ASME Y14.5	angular	0°	±°	www.fci.com	cat. no.	-	Product - Customer Drw		sheet 5 of 6		

	I	2	3	4	5	6	7	8																																																																																			
A	<div>NOTES:</div> <div>1. MATERIAL: POLYPHENYLENE ETHER + PS (PPE + PS) COLOR: BLACK</div> <div>2. PACKAGING SPECIFIED:GS-14-XXXX.</div> <div>3. A "△*" SYMBOL WILL BE NEXT TO ANY DIMENSION, VIEW, OR NOTE THAT HAS BEEN MODIFIED WITH THE CURRENT DRAWING REVISION</div>								A																																																																																		
B									B																																																																																		
C									C																																																																																		
D									D																																																																																		
E									E																																																																																		
F	<div><div><div>FCI</div><div>Copyright FCI.</div></div><table><tr><td>spec ref</td><td>-</td><td>dr</td><td>D. HUMBERT</td><td>2014-06-10</td><td>projection</td><td>MM</td><td>size</td><td>A2</td><td>scale</td><td>1:1</td></tr><tr><td>tolerance std</td><td>-</td><td>eng</td><td>D. LORD</td><td>2014-06-10</td><td rowspan="3"></td><td rowspan="10"></td><td colspan="3" rowspan="3">ecn no</td><td rowspan="10">rel level</td><td rowspan="3">In Work</td></tr><tr><td>-</td><td rowspan="2">TOLERANCES UNLESS OTHERWISE SPECIFIED</td><td>chr</td><td>D. LORD</td><td>2014-06-10</td></tr><tr><td>ASME Y14.5M</td><td>appr</td><td>D. LORD</td><td>2014-06-10</td></tr><tr><td>surface</td><td>✓</td><td colspan="3" rowspan="3"></td><td colspan="3" rowspan="3">title</td><td rowspan="3">cat. no.</td><td colspan="2" rowspan="3">Product - Customer Drw</td><td rowspan="3">sheet 6 of 6</td></tr><tr><td>ASME Y14.5</td><td>linear</td></tr><tr><td></td><td>angular</td></tr><tr><td></td><td></td><td>0.X</td><td>±</td><td></td><td colspan="3" rowspan="3">PANEL RETENTION BRACKET</td><td rowspan="4">10127037</td><td colspan="2" rowspan="3">rev</td><td rowspan="4">I</td></tr><tr><td></td><td></td><td>0.XX</td><td>±</td><td></td></tr><tr><td></td><td></td><td>0.XXX</td><td>±</td><td></td></tr><tr><td></td><td></td><td>0°</td><td>±°</td><td></td><td colspan="4">EXAMAX I/O 4-PR 8-COLUMN 2.0MM PITCH</td><td colspan="3"></td></tr></table></div>								spec ref	-	dr	D. HUMBERT	2014-06-10	projection	MM	size	A2	scale	1:1	tolerance std	-	eng	D. LORD	2014-06-10			ecn no			rel level	In Work	-	TOLERANCES UNLESS OTHERWISE SPECIFIED	chr	D. LORD	2014-06-10	ASME Y14.5M	appr	D. LORD	2014-06-10	surface	✓				title			cat. no.	Product - Customer Drw		sheet 6 of 6	ASME Y14.5	linear		angular			0.X	±		PANEL RETENTION BRACKET			10127037	rev		I			0.XX	±				0.XXX	±				0°	±°		EXAMAX I/O 4-PR 8-COLUMN 2.0MM PITCH							F
spec ref	-	dr	D. HUMBERT	2014-06-10	projection	MM	size	A2	scale	1:1																																																																																	
tolerance std	-	eng	D. LORD	2014-06-10			ecn no			rel level	In Work																																																																																
-	TOLERANCES UNLESS OTHERWISE SPECIFIED	chr	D. LORD	2014-06-10																																																																																							
ASME Y14.5M		appr	D. LORD	2014-06-10																																																																																							
surface	✓				title			cat. no.	Product - Customer Drw		sheet 6 of 6																																																																																
ASME Y14.5	linear																																																																																										
	angular																																																																																										
		0.X	±		PANEL RETENTION BRACKET			10127037	rev		I																																																																																
		0.XX	±																																																																																								
		0.XXX	±																																																																																								
		0°	±°		EXAMAX I/O 4-PR 8-COLUMN 2.0MM PITCH																																																																																						
	I	2	3	4	5	6	7	8																																																																																			

Mouser Electronics

Authorized Distributor

Click to View Pricing, Inventory, Delivery & Lifecycle Information:

[FCI / Amphenol:](#)

[10127037-101LF](#)