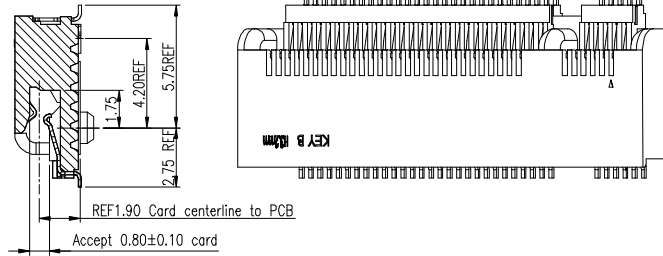
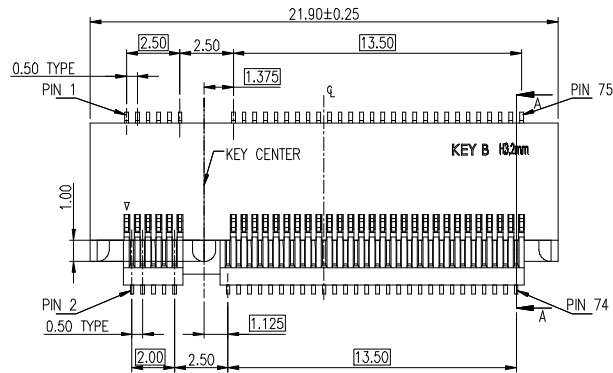


**PART NUMBER**  
**10125101-AXXRLF**

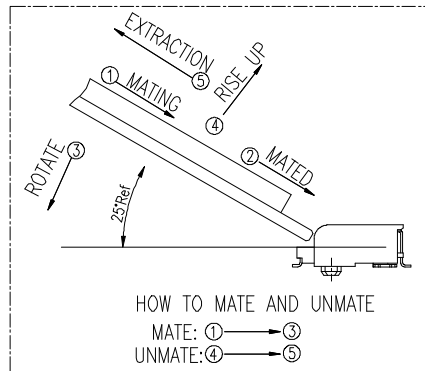
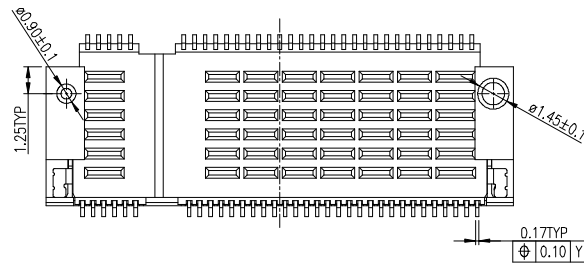
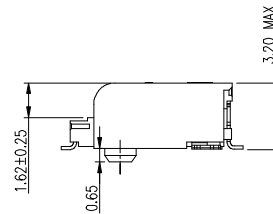
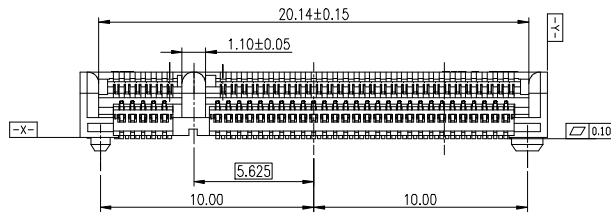
NOTES:

- 1.MATERIAL:
  - 1) HOUSING: HIGH TEMPERATURE THERMOPLASTIC, COLOR BLACK.
  - 2) CONTACT: COPPER ALLOY.
  - 3) NAIL: COPPER ALLOY.
- 2.FINISH:
  - 2.1 CONTACTS:
    - 1) 50u" MIN. Ni UNDER PLATED ALL
    - 2) Au PLATING ON CONTACT AREA.
    - 3) MATTE Tin 80u" MIN. ON SOLDER AREA.
  - 2.2 NAILS:
    - 1) 50u" MIN. Ni UNDER PLATED OVER ALL.
    - 2) MATTE Tin 80u" MIN. ON SOLDER AREA.
3. GENERAL CHARACTERISTICS:
  - 3.1 RATING: 50V 0.5A
  - 3.2 INSULATION RESISTANCE: 100Mohm MIN. AT 500VDC
  - 3.3 DIELECTRIC WITHSTANDING VOLTAGE: 300VAC FOR ONE MINUTE.
  - 3.4 CONTACT RESISTANCE: 55 mohm MAX. (BEFORE).
  - 3.5 MATING/UNMATING FORCE: 2.3Kgf MAX.
4. DURABILITY 50 CYCLES.
5. PRODUCT SPECIFICATION SEE FCI GS-12-1142.
6. FOR REFLOW SOLDERING, LEAD-FREE PROCESS.
7. THE PRODUCT IS RoHS COMPLIANT AND HALOGEN FREE.
8. P/N: 10125101- A XX R L F

- R=TAPE REEL PACKING
  - CONTACT AREA PLATING
  - 01:GoldFlash (Au1u")
  - 15:Au15u"
  - 30:Au30u"
- HEIGHT  
A=3.2

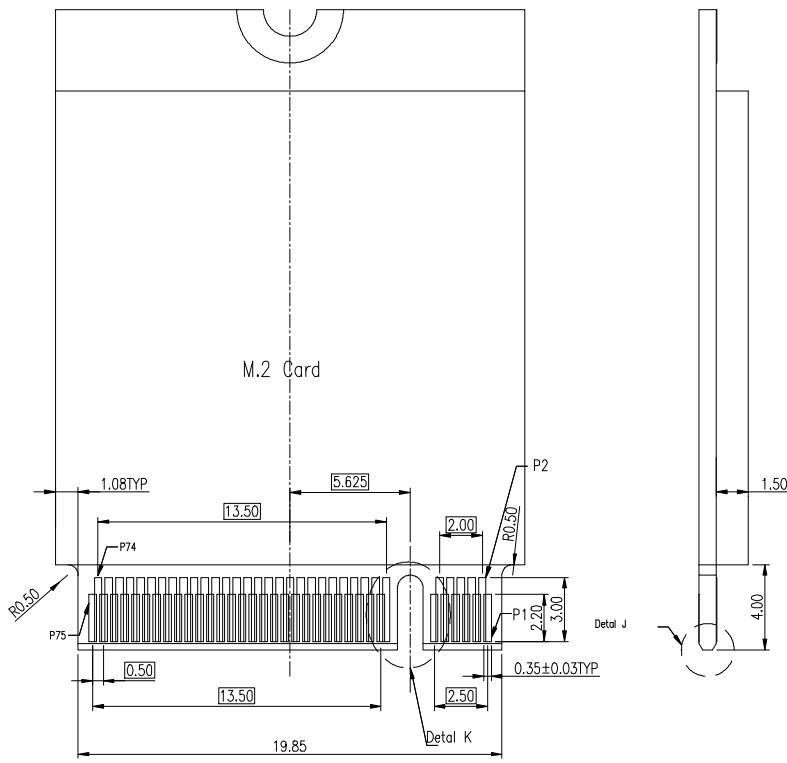


SECTION A-A  
SCALE: 1:1

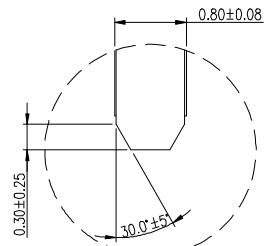


|             |             |          |    |            |                                       |                |                                  |
|-------------|-------------|----------|----|------------|---------------------------------------|----------------|----------------------------------|
| mat'l. code |             | surface  |    | tolerance  | projection                            | product family |                                  |
| ltr         |             | ecn no   | dr | date       | tolerances unless otherwise specified |                | title                            |
| A           |             | BF       |    | 2013-05-02 | angles                                | .X ±0.3        | M.2 CONN P=0.5MM<br>H3.2MM KEY B |
| B           |             | BF       |    | 2014-01-03 | in                                    | .XX ±0.25      |                                  |
| C           | ELX-T-19318 | TAI      |    | 2014-11-06 | X°±2°                                 | .XXX ±0.05     |                                  |
|             |             |          |    | dr         | BEER FU                               | 2013-05-02     | dwg no                           |
|             |             |          |    | enr        | BEER FU                               | 2013-05-02     | sheet 1 of 3                     |
|             |             |          |    | chr        | BEER FU                               | 2013-05-02     | size                             |
|             |             |          |    | appd       | BEER FU                               | 2013-05-02     | A4                               |
| sheet index |             | revision | C  | C          | C                                     |                | type                             |
|             |             | sheet    | 1  | 2          | 3                                     |                | CUSTOMER Drawing                 |

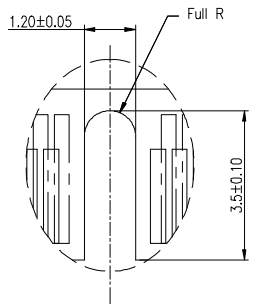
**PART NUMBER**  
**10125101-AXXRLF**



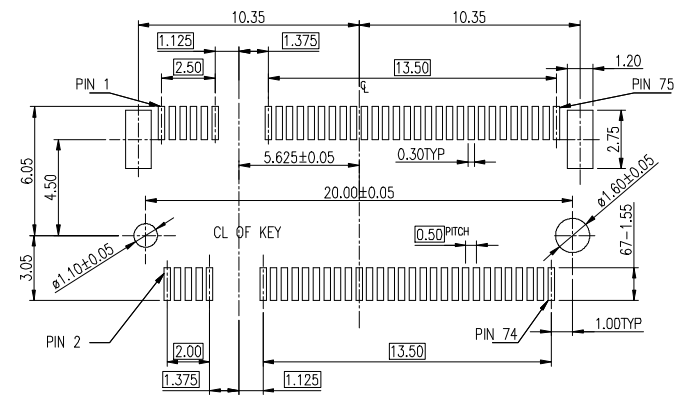
RECOMMENDED SINGLE CARD LAYOUT  
TOLERANCE ±0.05(TOP VIEW)



DETAIL K  
SCALE:2:1



DETAIL J  
SCALE:2:1



CARD FIXED HOLE(NOT SHOWN) LAYOUT SHALL REFER TO M.2 CARD PROVIDER

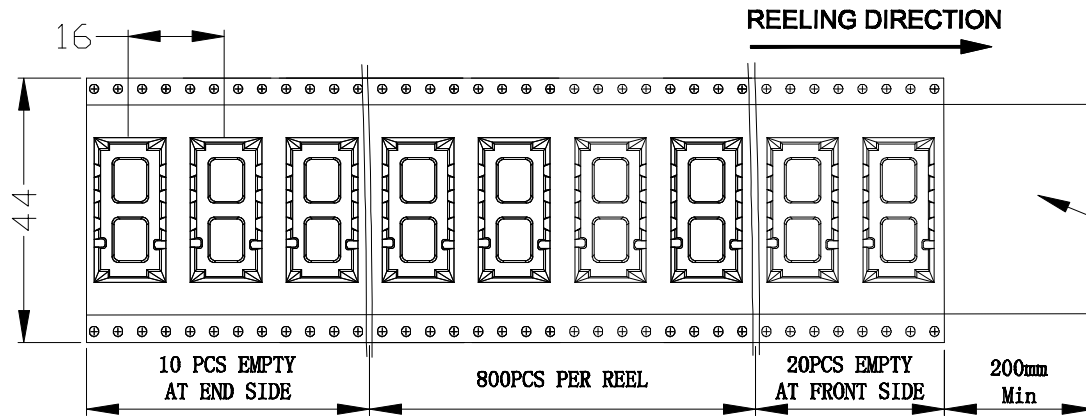
RECOMMENDED SINGLE CARD LAYOUT  
TOLERANCE ±0.05(TOP VIEW)



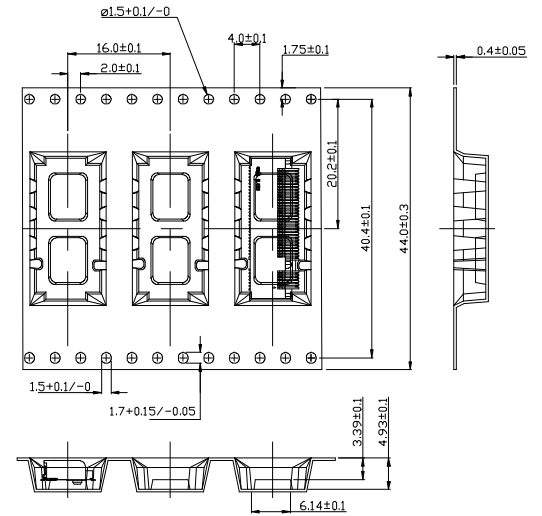
|          |                  |      |
|----------|------------------|------|
| dwg no   | sheet 2 of 3     | size |
| 10125101 |                  | A4   |
| type     | CUSTOMER Drawing |      |

| sheet index | revision sheet | C | C | C |  |  |  |  |  |  |  |  |  |  |  |  |  |
|-------------|----------------|---|---|---|--|--|--|--|--|--|--|--|--|--|--|--|--|
|             | 1              | 2 | 3 |   |  |  |  |  |  |  |  |  |  |  |  |  |  |

# PACKING SPECIFICATION

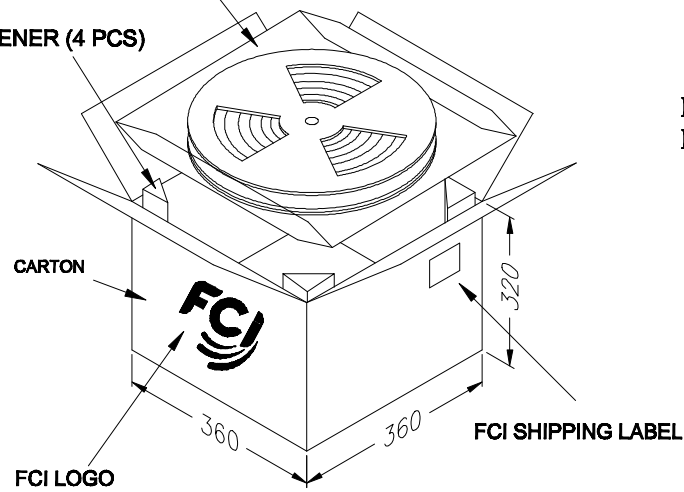


cover tape

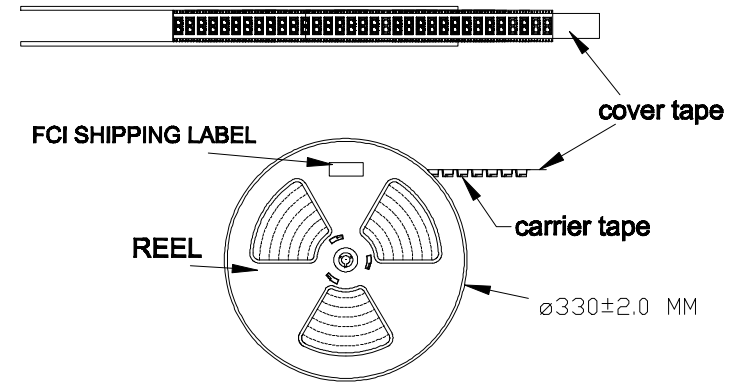
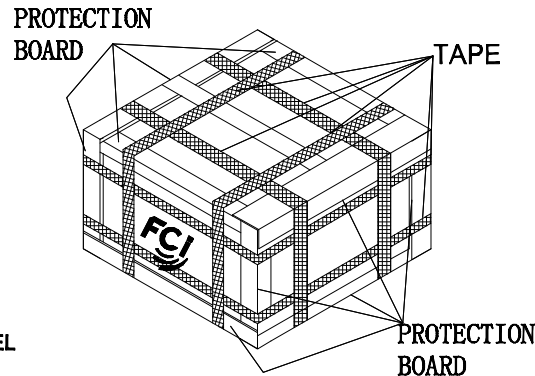


PLASTIC BAGS (2 PCS), 3 REELS/BAG, TOTAL 6 REELS/CARTON

STIFFENER (4 PCS)



Final Packing



|                   |                 |
|-------------------|-----------------|
| PART NUMBER       | 10125101-AXXRLF |
| PCS/REEL          | 800             |
| REEL/CARTON       | 6               |
| PCS/CARTON        | 4800            |
| NET WEIGHT (KG)   | 2.5KG           |
| GROSS WEIGHT (KG) | 6.5KG           |



|          |                  |      |
|----------|------------------|------|
| dwg no   | sheet 3 of 3     | size |
| 10125101 |                  | A4   |
| type     | CUSTOMER Drawing |      |

|             |                |     |     |     |  |  |  |  |  |  |  |  |  |  |  |  |  |  |  |  |
|-------------|----------------|-----|-----|-----|--|--|--|--|--|--|--|--|--|--|--|--|--|--|--|--|
| sheet index | revision sheet | C 1 | C 2 | C 3 |  |  |  |  |  |  |  |  |  |  |  |  |  |  |  |  |
|-------------|----------------|-----|-----|-----|--|--|--|--|--|--|--|--|--|--|--|--|--|--|--|--|

# Mouser Electronics

Authorized Distributor

Click to View Pricing, Inventory, Delivery & Lifecycle Information:

[FCI / Amphenol:](#)

[10125101-A01RLF](#) [10125101-A30RLF](#) [10125101-A15RLF](#)