



FCIconnect.com

Copyright FCI.

1

2

List of "SFV__R-1/2STE9HLF" customer document

| DOCUMENT NO. | LIST |
|------------------|--|
| 10117320(Sheet1) | DOCUMENT LIST |
| 10117320(Sheet2) | CAT.NO.TABLE FOR 0.5mm CONTACT SPACING CONNECTOR (SFV__R-1/2ST_HLF) |
| 10117320(Sheet3) | CONNECTOR USED FOR FPC/FFC WITH 0.5mm CONTACT SPACING (SFV__R-1ST_HLF) |
| 10117320(Sheet4) | CONNECTOR USED FOR FPC/FFC WITH 0.5mm CONTACT SPACING (SFV__R-2ST_HLF) |
| 10117320(Sheet5) | CAT.NO.TABLE FOR PLASTIC TAPE PACKAGED 0.5mm CONTACT SPACING CONNECTOR (SFV__R-1/2STE9HLF) |
| 10117320(Sheet6) | PLASTIC TAPE PACKAGED 0.5mm CONTACT SPACING CONNECTOR (SFV__R-1STE9HLF) |
| 10117320(Sheet7) | PLASTIC TAPE PACKAGED 0.5mm CONTACT SPACING CONNECTOR (SFV__R-2STE9HLF) |
| 10117320(Sheet8) | RECOMMENDED CABLE (FPC) (SFV__R-1/2ST__LF) |
| 10117320(Sheet9) | RECOMMENDED CABLE (FFC) (SFV__R-1/2ST__LF) |
| GS-12-645 | SPEC. |
| BJM-SFV101 | HANDLING PROCEDURES |

| | | | | | | | | | | | | | | | |
|-------------|----------------|-----|-----------|---|---|--|---|----------------|---|------------------------|---|---|---|------------|-----------|
| mat'l. code | | | | surface ISO 1302 <input checked="" type="checkbox"/> | | tolerance ISO 406 <input checked="" type="checkbox"/> ISO 1101 | | projection | | product family 58EF | | | | CODE JP | |
| ltr | ecn no | dr | date | tolerances unless otherwise specified | | | | | | | | title 0.5mm SPACING FPC CONNECTOR DOCUMENT LIST (Cat. No. : SFV__R-1/2STE9HLF) | | | |
| A | J11-0042 | S.W | 2011-2-10 | angles | | linear | | | | | | | | | |
| | | | | | | | | | | scale | | dwg no 10117320 | | | |
| | | | | | | | | | | | | | | | |
| | | | | | | | | | | | | sheet 1 of 9 | | | |
| | | | | | | | | | | | | | | | |
| | | | | | | | | | | size A4 | | type Product Customer Drawing | | | |
| | | | | | | | | | | | | | | | |
| sheet index | revision sheet | A | A | A | A | A | A | A | A | A | A | A | A | A | Rev. A |

form: A4

1

2

PDM: Rev:A

STATUS:Released

Printed: Feb 18, 2011

CAT. NO. & DIMENSIONS

| NO. OF CONTACTS (n) | CAT. NO. | DIMENSIONS (NOTE2) | | | |
|---------------------|-------------------|--------------------|---------|---------|---------|
| | | A ± 0.2 | B ± 0.2 | C ± 0.1 | D ± 0.1 |
| 4 | SFV4R-1/2ST__HLF | 7.5 | 5.9 | 1.5 | 2.7 |
| 5 | SFV5R-1/2ST__HLF | 8.0 | 6.4 | 2.0 | 3.2 |
| 6 | SFV6R-1/2ST__HLF | 8.5 | 6.9 | 2.5 | 3.7 |
| 7 | SFV7R-1/2ST__HLF | 9.0 | 7.4 | 3.0 | 4.2 |
| 8 | SFV8R-1/2ST__HLF | 9.5 | 7.9 | 3.5 | 4.7 |
| 9 | SFV9R-1/2ST__HLF | 10.0 | 8.4 | 4.0 | 5.2 |
| 10 | SFV10R-1/2ST__HLF | 10.5 | 8.9 | 4.5 | 5.7 |
| 11 | SFV11R-1/2ST__HLF | 11.0 | 9.4 | 5.0 | 6.2 |
| 12 | SFV12R-1/2ST__HLF | 11.5 | 9.9 | 5.5 | 6.7 |
| 13 | SFV13R-1/2ST__HLF | 12.0 | 10.4 | 6.0 | 7.2 |
| 14 | SFV14R-1/2ST__HLF | 12.5 | 10.9 | 6.5 | 7.7 |
| 15 | SFV15R-1/2ST__HLF | 13.0 | 11.4 | 7.0 | 8.2 |
| 16 | SFV16R-1/2ST__HLF | 13.5 | 11.9 | 7.5 | 8.7 |
| 17 | SFV17R-1/2ST__HLF | 14.0 | 12.4 | 8.0 | 9.2 |
| 18 | SFV18R-1/2ST__HLF | 14.5 | 12.9 | 8.5 | 9.7 |
| 19 | SFV19R-1/2ST__HLF | 15.0 | 13.4 | 9.0 | 10.2 |
| 20 | SFV20R-1/2ST__HLF | 15.5 | 13.9 | 9.5 | 10.7 |
| 21 | SFV21R-1/2ST__HLF | 16.0 | 14.4 | 10.0 | 11.2 |
| 22 | SFV22R-1/2ST__HLF | 16.5 | 14.9 | 10.5 | 11.7 |
| 23 | SFV23R-1/2ST__HLF | 17.0 | 15.4 | 11.0 | 12.2 |
| 24 | SFV24R-1/2ST__HLF | 17.5 | 15.9 | 11.5 | 12.7 |
| 25 | SFV25R-1/2ST__HLF | 18.0 | 16.4 | 12.0 | 13.2 |
| 26 | SFV26R-1/2ST__HLF | 18.5 | 16.9 | 12.5 | 13.7 |
| 27 | SFV27R-1/2ST__HLF | 19.0 | 17.4 | 13.0 | 14.2 |
| 28 | SFV28R-1/2ST__HLF | 19.5 | 17.9 | 13.5 | 14.7 |
| 29 | SFV29R-1/2ST__HLF | 20.0 | 18.4 | 14.0 | 15.2 |
| 30 | SFV30R-1/2ST__HLF | 20.5 | 18.9 | 14.5 | 15.7 |
| 31 | SFV31R-1/2ST__HLF | 21.0 | 19.4 | 15.0 | 16.2 |
| 32 | SFV32R-1/2ST__HLF | 21.5 | 19.9 | 15.5 | 16.7 |
| 33 | SFV33R-1/2ST__HLF | 22.0 | 20.4 | 16.0 | 17.2 |
| 34 | SFV34R-1/2ST__HLF | 22.5 | 20.9 | 16.5 | 17.7 |
| 35 | SFV35R-1/2ST__HLF | 23.0 | 21.4 | 17.0 | 18.2 |

CAT. NO. SFV (n) R - 1 ST __ HLF

SERIES NAME SFV

NO. OF CONTACTS (n)

RIGHT ANGLE TYPE R

FOR FPC/FFC, CONTACT DIRECTION - 1

1. LOWER CONTACT TYPE

2. UPPER CONTACT TYPE

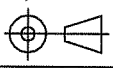
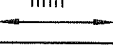

FOR AUTOMATIC MOUNTING (SMT) ST

PACKAGE STYLE __

HALOGEN and LEAD FREE HLF

NOTES

1. THIS PRODUCT IS THE CONNECTOR USED FOR FPC AND COPES WITH AUTOMATIC MOUNTING (SMT).
2. SEE PART DRAWINGS FOR DIMENSIONS A~D.

| | | | | | | | | | | | | | |
|-------------|--------|----------------|------|--|--|--|--|--|--|--|--|--------------|--|
| mat'l. code | | | | surface <input checked="" type="checkbox"/> ISO 1302 | | tolerance <input checked="" type="checkbox"/> ISO 406 <input checked="" type="checkbox"/> ISO 1101 | | projection  | | product family 58EF | | CODE JP | |
| ltr | ecn no | dr | date | tolerances unless otherwise specified | | | | mm  | | title | | | |
| A | | | | angles linear | | | | scale \times | | CAT. NO. TABLE FOR 0.5 mm CONTACT SPACING CONNECTOR (Cat. No. : SFV__R-1/2ST__HLF) | | | |
| | | | | dr <i>S. Mithala</i> 2011-2-10 | | | |  | | dwg no | | sheet 2 of 9 | |
| | | | | enrg <i>S. Mithala</i> 2011-2-10 | | | | | | 10117320 | | size A4 | |
| | | | | chr <i>Y. Zamalek</i> 2011-2-10 | | | | | | | | | |
| | | | | appd <i>M. Mithala</i> Feb 10/11 | | | | | | | | | |
| sheet index | | revision sheet | | | | | | | | | | Rev. A | |

B

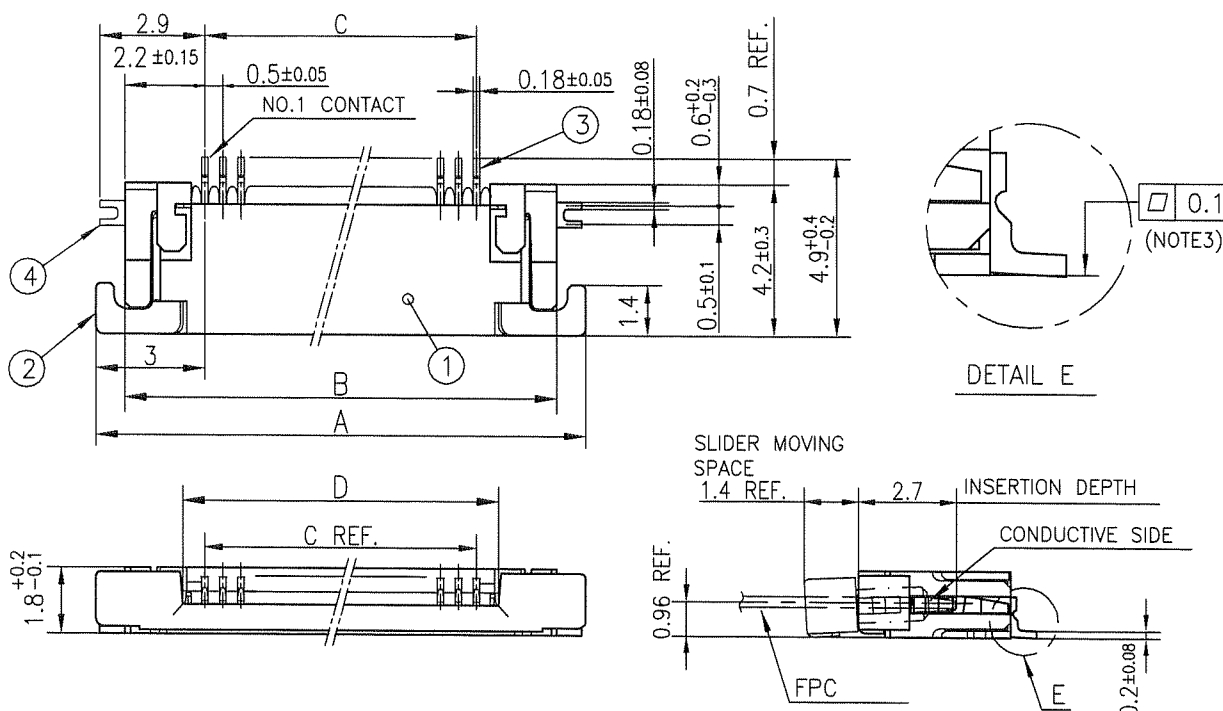
PATTERN FOR
MOUNTING PLATE
FIXING

n : NO. OF CONTACTS



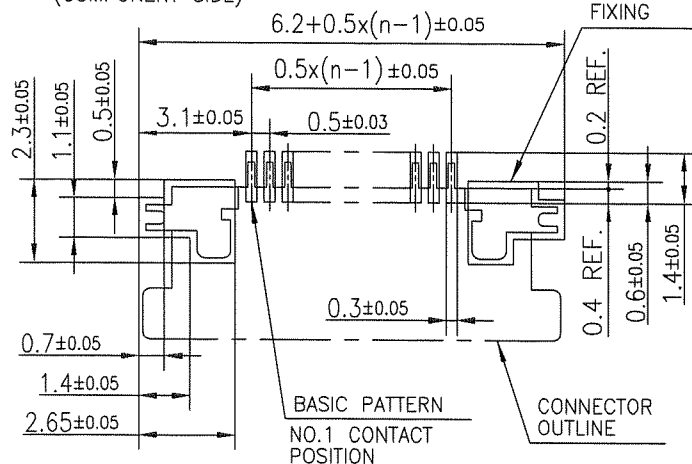
1. THIS PRODUCT IS THE CONNECTOR USED FOR FPC AND COPS WITH AUTOMATIC MOUNTING (SMT).
2. THIS PRODUCT IS LOWER CONTACT TYPE CONNECTOR.
3. FLATNESS OF CONTACT TERMINAL AND MOUNTING PLATE MUST BE WITHIN TOLERANCE IN E PORTION DETAILED DRAWING.
4. THIS PRODUCT MEETS EUROPEAN UNION DIRECTIVES AND OTHER COUNTRY REGULATIONS AS DESCRIBED IN GS-22-008.
5. THE HOUSING WILL WITHSTAND EXPOSURE TO 260°C PEAK TEMPERATURE FOR 10 SECONDS IN A REFLOW SOLDERING OVEN.

D



| PT. NO. | PARTS NAME | MATERIAL | Q'TY | NOTE |
|---------|----------------|--|------|--|
| 1 | HOUSING | 13~35pin : LCP RESIN GLASS REINFORCED (UL94V-0) | 1 | COLOR : BLACK (HALOGEN FREE) |
| | | 4~12pin : POLYAMIDE RESIN GLASS REINFORCED (UL94V-0) | | |
| 2 | SLIDER | PPS RESIN GLASS REINFORCED (UL94V-0) | 1 | COLOR : BLACK (HALOGEN FREE) |
| 3 | CONTACT | PHOSPHOR BRONZE | n | PLATING : MATTE PURE TIN NI UNDER PLATED (LEAD FREE) |
| 4 | MOUNTING PLATE | | 2 | |

n : NO. OF CONTACTS

RECOMMENDED PC BOARD LAYOUT
(COMPONENT SIDE)PATTERN FOR
MOUNTING PLATE
FIXING

NOTES

- 1.THIS PRODUCT IS THE CONNECTOR USED FOR FPC AND COPS WITH AUTOMATIC MOUNTING (SMT).
- 2.THIS PRODUCT IS UPPER CONTACT TYPE CONNECTOR.
- 3.FLATNESS OF CONTACT TERMINAL AND MOUNTING PLATE MUST BE WITHIN TOLERANCE IN E PORTION DETAILED DRAWING.
- 4.THIS PRODUCT MEETS EUROPEAN UNION DIRECTIVES AND OTHER COUNTRY REGULATIONS AS DESCRIBED IN GS-22-008.
- 5.THE HOUSING WILL WITHSTAND EXPOSURE TO 260°C PEAK TEMPERATURE FOR 10 SECONDS IN A REFLOW SOLDERING OVEN.

| | | | | | | | | | | | | |
|-------------|--------|----------------|-------------|---|--------|------------|--|--|--|--------------|------|--|
| mat'l. code | | | | surface ISO 1302 <input checked="" type="checkbox"/> tolerance ISO 406 <input checked="" type="checkbox"/> ISO 1101 | | projection | | product family 58EF | | CODE JP | | |
| ltr | ecn no | dr | date | tolerances unless otherwise specified | | | | title CONNECTOR USED FOR FPC WITH 0.5 mm CONTACT SPACING (Cat. No. : SFV__R-2ST__HLF) | | | | |
| A | | | | angles | linear | mm | | | | | | |
| | | | | | | scale X | | | | | | |
| | | dr | S. Watanabe | 2011-2-10 | | | | dwg no | | sheet 4 of 9 | size | |
| | | engr | S. Watanabe | 2011-2-10 | | | | | | | | |
| | | chr | Y. Kamada | 2011-2-10 | | | | | | | | |
| | | appd | M. Ito | Feb 10 2011 | | | | | | | | |
| sheet index | | revision sheet | | | | | | type Product Customer Drawing | | Rev. A | | |

CAT. NO. & DIMENSIONS

| NO. OF CONTACTS (n) | CAT. NO. | DIMENSIONS (NOTE3) | | |
|---------------------|-------------------|--------------------|---------|---------|
| | | F MAX. | G ± 0.3 | H ± 0.1 |
| 4 | SFV4R-1/2STE9HLF | 22.4 | 16 | — |
| 5 | SFV5R-1/2STE9HLF | 22.4 | 16 | — |
| 6 | SFV6R-1/2STE9HLF | 22.4 | 16 | — |
| 7 | SFV7R-1/2STE9HLF | 30.4 | 24 | — |
| 8 | SFV8R-1/2STE9HLF | 30.4 | 24 | — |
| 9 | SFV9R-1/2STE9HLF | 30.4 | 24 | — |
| 10 | SFV10R-1/2STE9HLF | 30.4 | 24 | — |
| 11 | SFV11R-1/2STE9HLF | 30.4 | 24 | — |
| 12 | SFV12R-1/2STE9HLF | 30.4 | 24 | — |
| 13 | SFV13R-1/2STE9HLF | 30.4 | 24 | — |
| 14 | SFV14R-1/2STE9HLF | 30.4 | 24 | — |
| 15 | SFV15R-1/2STE9HLF | 30.4 | 24 | — |
| 16 | SFV16R-1/2STE9HLF | 30.4 | 24 | — |
| 17 | SFV17R-1/2STE9HLF | 30.4 | 24 | — |
| 18 | SFV18R-1/2STE9HLF | 30.4 | 24 | — |
| 19 | SFV19R-1/2STE9HLF | 30.4 | 24 | — |
| 20 | SFV20R-1/2STE9HLF | 30.4 | 24 | — |
| 21 | SFV21R-1/2STE9HLF | 30.4 | 24 | — |
| 22 | SFV22R-1/2STE9HLF | 30.4 | 24 | — |
| 23 | SFV23R-1/2STE9HLF | 38.4 | 32 | 28.4 |
| 24 | SFV24R-1/2STE9HLF | 38.4 | 32 | 28.4 |
| 25 | SFV25R-1/2STE9HLF | 38.4 | 32 | 28.4 |
| 26 | SFV26R-1/2STE9HLF | 38.4 | 32 | 28.4 |
| 27 | SFV27R-1/2STE9HLF | 38.4 | 32 | 28.4 |
| 28 | SFV28R-1/2STE9HLF | 38.4 | 32 | 28.4 |
| 29 | SFV29R-1/2STE9HLF | 38.4 | 32 | 28.4 |
| 30 | SFV30R-1/2STE9HLF | 38.4 | 32 | 28.4 |
| 31 | SFV31R-1/2STE9HLF | 50.4 | 44 | 40.4 |
| 32 | SFV32R-1/2STE9HLF | 50.4 | 44 | 40.4 |
| 33 | SFV33R-1/2STE9HLF | 50.4 | 44 | 40.4 |
| 34 | SFV34R-1/2STE9HLF | 50.4 | 44 | 40.4 |
| 35 | SFV35R-1/2STE9HLF | 50.4 | 44 | 40.4 |

CAT. NO.

SFV (n) R - 1 ST E9 HLF

SERIES NAME

NO. OF CONTACTS

RIGHT ANGLE TYPE

FOR FPC/FFC, CONTACT DIRECTION

1. LOWER CONTACT TYPE
2. UPPER CONTACT TYPE

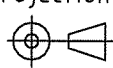
FOR AUTOMATIC MOUNTING (SMT)

TAPE PACKAGING FOR E9 (500pcs PER REEL)

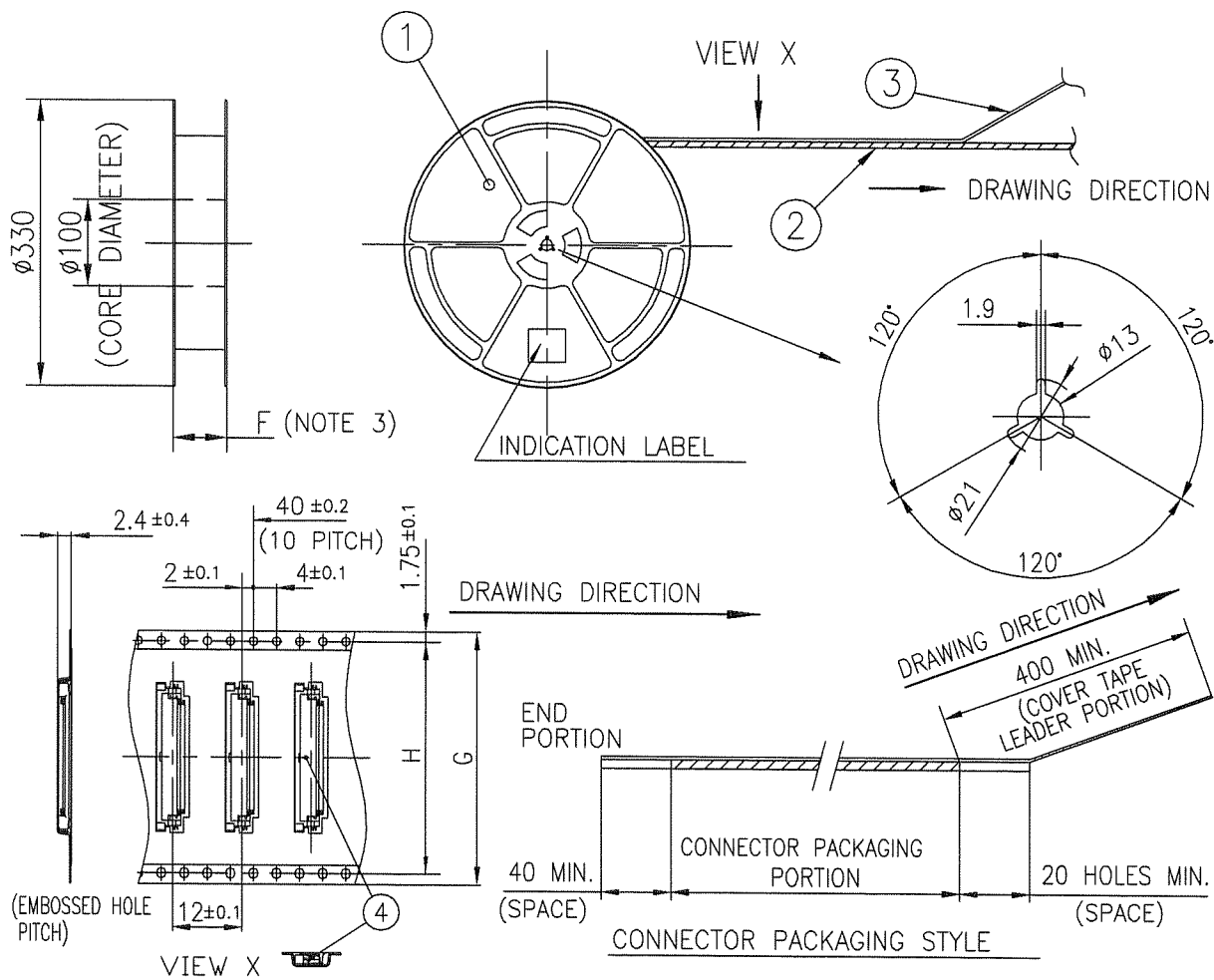
HALOGEN AND LEAD FREE

NOTES

1. THIS PRODUCT IS THE CONNECTOR USED FOR FPC AND COPEs WITH AUTOMATIC MOUNTING (SMT).
2. THIS CATALOG NO. INDICATES PLASTIC TAPE PACKAGED CONNECTOR.
3. SEE PART DRAWINGS FOR DIMENSIONS F~H.

| | | | | | | | | | | | |
|-------------|----------------|----|------|---|----------------------|--|--|--|--|--------------|------|
| mat'l. code | | | | surface <input checked="" type="checkbox"/> ISO 1302 <input checked="" type="checkbox"/> tolerance <input checked="" type="checkbox"/> ISO 406 <input checked="" type="checkbox"/> ISO 1101 | | projection  | | product family 58EF | | CODE JP | |
| ltr | ecn no | dr | date | tolerances unless otherwise specified | | mm | | title | | | |
| A | | | | angles | linear | scale \propto | | CAT. NO. TABLE FOR PLASTIC TAPE PACKAGED 0.5 mm CONTACT SPACING CONNECTOR (Cat. No. : SFV__R-1/2STE9HLF) | | | |
| | | | | dr | S. Nishida 2011-2-10 | | | dwg no | | sheet 5 of 9 | size |
| | | | | enr | S. Nishida 2011-2-10 | | | 10117320 | | | A4 |
| | | | | chr | Y. Kameda 2011-2-10 | | | | | | |
| | | | | appd | M. Nishida Feb 10 11 | | | | | | |
| sheet index | revision sheet | | | | | | | type Product Customer Drawing | | | |
| | | | | | | | | Rev. A | | | |

TOLERANCES
UNLESS OTHERWISE SPECIFIED : ± 5 , ANGLE $\pm 5^\circ$



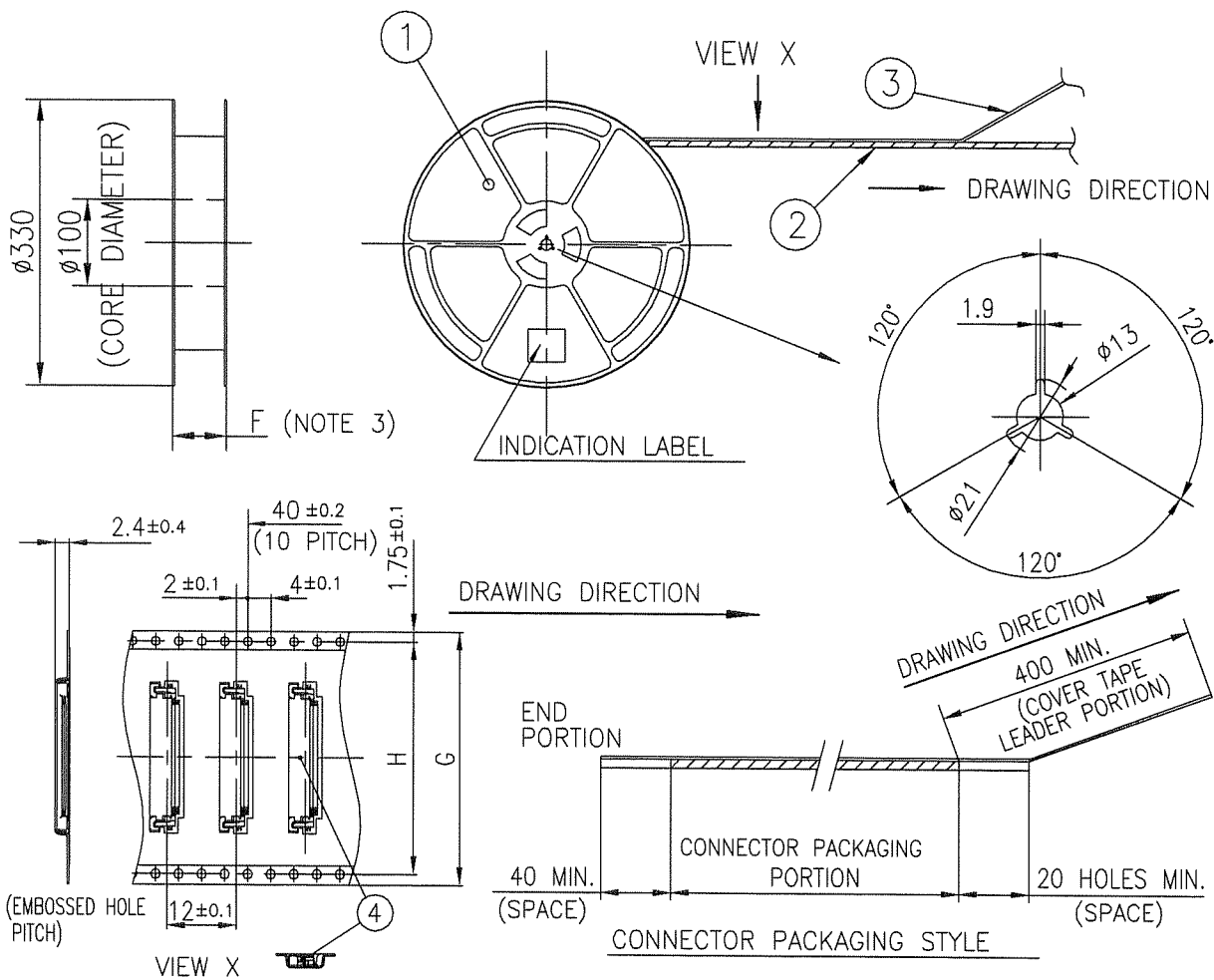
| PT. NO. | PARTS NAME | CAT. NO. | MATERIAL | Q'TY | NOTE |
|---------|-----------------------|----------------|-------------------|-------|------------------------------|
| 1 | REEL | _____ | POLYSTYRENE | 1 | COLOR : BLACK |
| 2 | PLASTIC (EMBOSS) TAPE | _____ | A-PET | _____ | COLOR : TRANSPARENCY (CLEAR) |
| 3 | COVER | _____ | POLYESTER | _____ | COLOR : TRANSPARENCY (CLEAR) |
| 4 | CONNECTOR | SFV__R-1ST_HLF | SEE ATTACHED DWG. | 500 | LOWER CONTACT TYPE |

NOTES

1. THIS IS PLASTIC TAPE PACKAGED CONNECTOR USED FOR FPC AND COPS WITH AUTOMATIC MOUNTING (SMT).
2. SEE JIS C 0806 (PACKING OF ELECTRONIC COMPONENTS ON CONTINUOUS TAPES (SURFACE MOUNTING DEVICES)) FOR SHAPE AND DIMENSIONS OF PLASTIC (EMBOSS) TAPE AND REEL.
3. F DIMENSION IS PORTION OF THE CORE.

| | | | | | | | | | | | |
|-------------|----------------|----|------|---|--------|------------|------|---|--|-------------------------------|--------|
| mat'l. code | | | | surface <input checked="" type="checkbox"/> ISO 1302 <input checked="" type="checkbox"/> tolerance <input checked="" type="checkbox"/> ISO 406 <input checked="" type="checkbox"/> ISO 1101 | | projection | | product family 58EF | | CODE JP | |
| ltr | ecn no | dr | date | tolerances unless otherwise specified | | | | title PLASTIC TAPE PACKAGED 0.5 mm CONTACT SPACING CONNECTOR (Cat. No. : SFV__R-1STE9HLF) | | | |
| A | | | | angles | linear | mm | | dwg no sheet 6 of 9 size | | | |
| | | | | | | scale X | | 10117320 A4 | | | |
| | | | | dr | engr | chr | appd | FCI | | type Product Customer Drawing | |
| sheet index | revision sheet | | | | | | | | | | Rev. A |

TOLERANCES
UNLESS OTHERWISE SPECIFIED : ± 5 , ANGLE $\pm 5^\circ$



| PT. NO. | PARTS NAME | CAT. NO. | MATERIAL | Q'TY | NOTE |
|---------|-----------------------|----------------|-------------------|------|------------------------------|
| 1 | REEL | | POLYSTYRENE | 1 | COLOR : BLACK |
| 2 | PLASTIC (EMBOSS) TAPE | | A-PET | | COLOR : TRANSPARENCY (CLEAR) |
| 3 | COVER | | POLYESTER | | COLOR : TRANSPARENCY (CLEAR) |
| 4 | CONNECTOR | SFV__R-2ST_HLF | SEE ATTACHED DWG. | 500 | LOWER CONTACT TYPE |

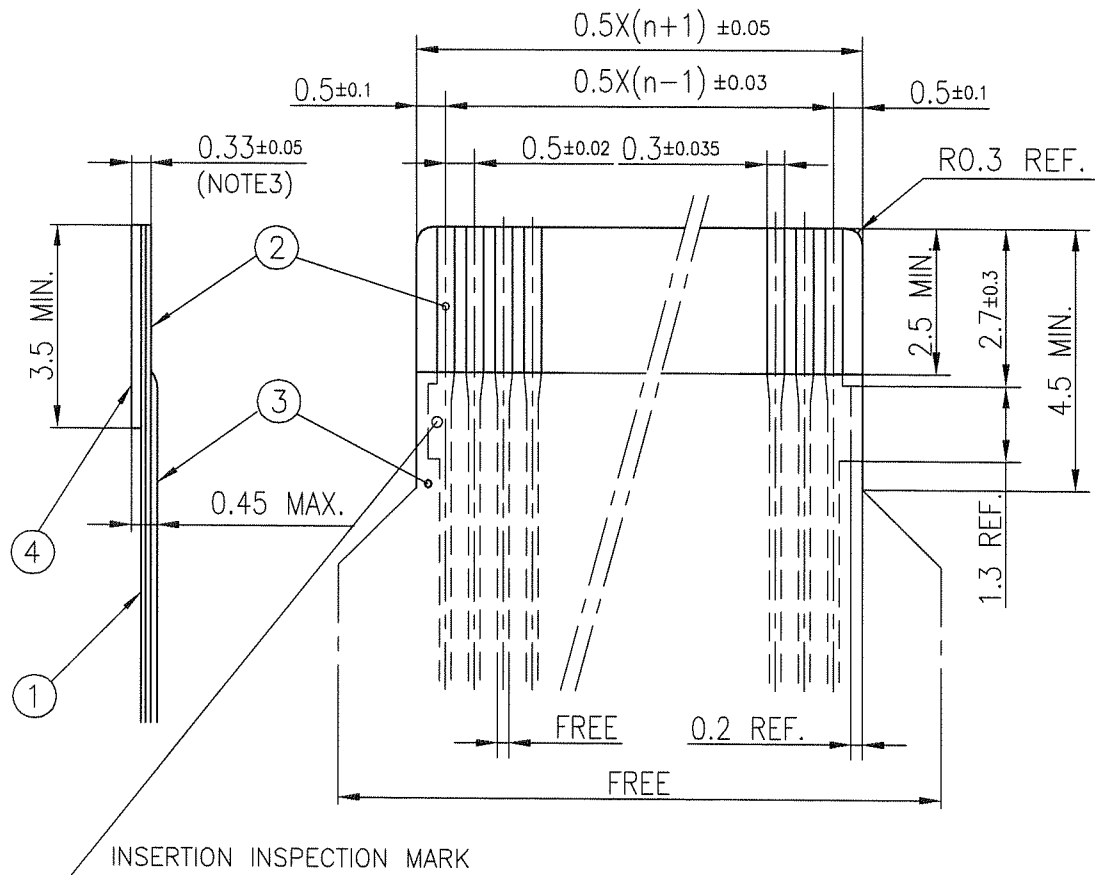
NOTES

- THIS IS PLASTIC TAPE PACKAGED CONNECTOR USED FOR FPC AND COPS WITH AUTOMATIC MOUNTING (SMT).
- SEE JIS C 0806 (PACKING OF ELECTRONIC COMPONENTS ON CONTINUOUS TAPES (SURFACE MOUNTING DEVICES)) FOR SHAPE AND DIMENSIONS OF PLASTIC (EMBOSS) TAPE AND REEL.
- F DIMENSION IS PORTION OF THE CORE.

| | | | | | | | | | | | |
|-------------|--------|----------------|------|---|------------|------------|--|---|--|---------|--|
| mat'l. code | | | | surface ISO 1302 <input checked="" type="checkbox"/> tolerance ISO 406 <input checked="" type="checkbox"/> ISO 1101 | | projection | | product family 58EF | | CODE JP | |
| ltr | ecn no | dr | date | tolerances unless otherwise specified | | | | title PLASTIC TAPE PACKAGED 0.5 mm CONTACT SPACING CONNECTOR (Cat. No. : SFV__R-2STE9HLF) | | | |
| A | | | | angles | linear | mm | | dwg no sheet 7 of 9 size | | | |
| | | | | | | scale X | | 10117320 A4 | | | |
| | | | | dr | S. Kishida | 2011-2-10 | | | | | |
| | | | | engr | S. Kishida | 2011-2-10 | | | | | |
| | | | | chr | Y. Kishida | 2011-2-10 | | | | | |
| | | | | appd | M. Kishida | 2011-2-10 | | | | | |
| sheet index | | revision sheet | | | | | | type Product Customer Drawing | | Rev. A | |

RECOMMENDED CABLE (FPC)

n : NO. OF CONTACTS



| PT. NO. | PARTS NAME | MATERIAL | THICKNESS (um) |
|---------|-----------------|---|----------------|
| 1 | BASE FILM | POLYIMIDE OR POLYESTER OR EQUAL | 25 |
| 2 | CONDUCTOR | COPPER FOIL(PLATING : TIN or SOLDER 1um MIN.) | 35 |
| 3 | OVERLAY | POLYIMIDE OR POLYESTER OR EQUAL | — |
| 4 | SUPPORTING TAPE | POLYESTER OR POLYIMIDE OR EQUAL | 188 |

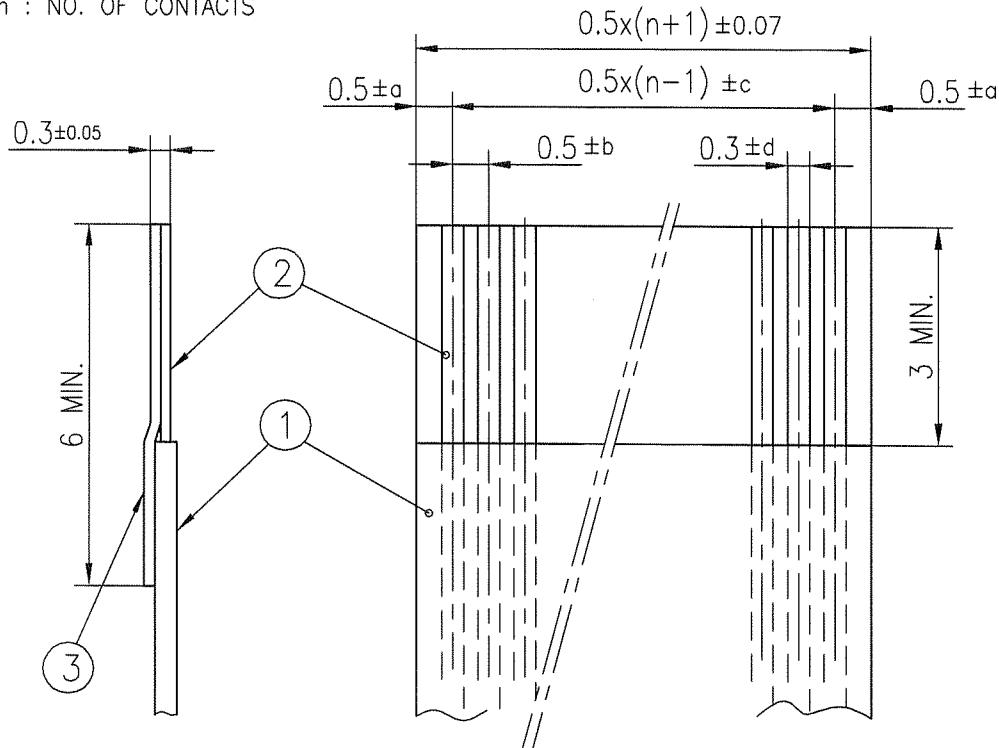
NOTES

1. NO BURR AT EACH PORTION.
2. NO PEELING IN COMMON USE.
3. TOTAL THICKNESS LIMIT OF EACH MATERIAL (INCLUDING ADHESIVE AGENT) IS SPECIFIED.

| | | | | | | | | | | | | |
|-------------|--------|----------------|-------------|---|--------|------------|--|-------------------------------|--|--------------|------|----|
| mat'l. code | | | | surface <input checked="" type="checkbox"/> ISO 1302 <input checked="" type="checkbox"/> tolerance <input checked="" type="checkbox"/> ISO 406 <input checked="" type="checkbox"/> ISO 1101 | | projection | | product family 58EF | | CODE JP | | |
| ltr | ecn no | dr | date | tolerances unless otherwise specified | | | | title | | | | |
| A | | | | angles | linear | mm | | RECOMMENDED CABLE | | | | |
| | | | | | | scale X | | (Cat. No. : SFV__R-1/2ST__) | | | | |
| | | dr | S. Watanabe | 2011-2-10 | | | | dwg no | | sheet 8 of 9 | size | |
| | | engr | B. Watanabe | 2011-2-10 | | | | 10112793 | | | | A4 |
| | | chr | M. Komatsu | 2011-2-10 | | | | | | | | |
| | | appd | M. Watanabe | Feb 2011 | | | | | | | | |
| sheet index | | revision sheet | | | | | | type Product Customer Drawing | | Rev. A | | |

RECOMMENDED CABLE (FFC)

n : NO. OF CONTACTS



| KIND OF FFC (NOTE3) | DIMENSIONAL TOLERANCE | | | |
|---------------------|-----------------------|-------|-------|--------|
| | a | b | c | d |
| 1 | ±0.07 | ±0.04 | ±0.05 | ±0.02 |
| 2 | ±0.1 | ±0.03 | ±0.03 | ±0.025 |

| PT. NO. | PARTS NAME | MATERIAL | NOTE |
|---------|-----------------|-------------------------------------|-------------------------------------|
| 1 | INSULATOR | FLAME RESISTING POLYESTER OR EQUAL | |
| 2 | CONDUCTOR | COPPER FOIL:THICKNESS 35 OR 50um | PLATING : TIN OR SOLDER 1um MIN. |
| 3 | SUPPORTING TAPE | FLAME RESISTING POLYESTER OR EQUAL | |

NOTES

1. NO BURR AT EACH PORTION.
2. NO PEELING IN COMMON USE.
3. EITHER KIND1 OR KIND2 OF FFC CAN ACCEPT DIMENSIONAL TOLERANCE a,b,c AND d.

| | | | | | | | | | | | | | |
|-------------|--------|----|------|---|--|----------------------------------|--|----------------|--|---|--|--------------|--|
| mat'l. code | | | | surface ISO 1302 <input checked="" type="checkbox"/> ISO 406 ISO 1101 | | tolerance ISO 406 ISO 1101 | | projection | | product family 58EF | | CODE JP | |
| ltr | ecn no | dr | date | tolerances unless otherwise specified | | angles | | linear | | title RECOMMENDED CABLE (Cat. No. : SFV__R-1/2ST__LF) | | | |
| A | | | | | | | | | | dwg no 10117320 | | sheet 9 of 9 | |
| | | | | dr | | S. N. Tada | | 2011-2-10 | | size A4 | | | |
| | | | | enrg | | S. N. Tada | | 2011-2-10 | | | | | |
| | | | | chr | | Y. Kamada | | 2011-2-10 | | | | | |
| | | | | appd | | M. A. S. | | Feb 10/11 | | | | | |
| sheet index | | | | revision sheet | | | | | | type Product Customer Drawing | | Rev. A | |

Mouser Electronics

Authorized Distributor

Click to View Pricing, Inventory, Delivery & Lifecycle Information:

[FCI / Amphenol:](#)

[SFV10R-2STBE9HLF](#) [SFV24R-1STE9HLF](#) [SFV26R-1STE9HLF](#)