

mat'l. code				surface				tolerance				projection				product family										
—				ISO 1302				ISO 406 ISO 1101								58EF										
ltr	ecn no	dr	date	tolerances unless				otherwise specified								title										
A	J11-0011	S.W	2011-1-14	angles				linear																		
B	ELX-J-32839	S.W	2019-3-6									scale N/A				(Cat. No. : SFV__R-3/4STBE1HLF)										
				dr	S.WATANABE			2019-3-6							dwg no											
				engr	S.WATANABE			2019-3-6											sheet 1 of 8							
				chr	S-H.THIO			2019-3-7															size			
				appd	Y.KAMEDA			2019-3-7																		
sheet index		revision sheet		B	B	B	B	B	B	B	B	type				Product Customer Drawing										
				1	2	3	4	5	6	7	8															

List of "SFV__R-3/4STBE1HLF" customer document

DOCUMENT NO.	LIST
10116954(Sheet1)	DOCUMENT LIST
10116954(Sheet2)	CAT.NO.TABLE FOR 0.5mm CONTACT SPACING CONNECTOR (SFV__R-3/4STB_HLF)
10116954(Sheet3)	CONNECTOR USED FOR FPC WITH 0.5mm CONTACT SPACING (SFV__R-3STB_HLF)
10116954(Sheet4)	CONNECTOR USED FOR FPC WITH 0.5mm CONTACT SPACING (SFV__R-4STB_HLF)
10116954(Sheet5)	CAT.NO.TABLE FOR PLASTIC TAPE PACKAGED 0.5mm CONTACT SPACING CONNECTOR (SFV__R-3/4STBE1HLF)
10116954(Sheet6)	PLASTIC TAPE PACKAGED 0.5mm CONTACT SPACING CONNECTOR (SFV__R-3STBE1HLF)
10116954(Sheet7)	PLASTIC TAPE PACKAGED 0.5mm CONTACT SPACING CONNECTOR (SFV__R-4STBE1HLF)
10116954(Sheet8)	RECOMMENDED CABLE (FPC) (SFV__R-3/4STB_HLF)
GS-12-0783	SPEC.
BJM-SFV102	HANDLING PROCEDURES

CAT. NO. & DIMENSIONS

NO. OF CONTACTS (n)	CAT. NO.	DIMENSIONS (NOTE2)			
		A ± 0.2	B ± 0.2	C ± 0.1	D ± 0.1
4	SFV 4R-3/4STB__HLF	7.5	5.9	1.5	1.6
5	SFV 5R-3/4STB__HLF	8.0	6.4	2.0	2.1
6	SFV 6R-3/4STB__HLF	8.5	6.9	2.5	2.6
7	SFV 7R-3/4STB__HLF	9.0	7.4	3.0	3.1
8	SFV 8R-3/4STB__HLF	9.5	7.9	3.5	3.6
9	SFV 9R-3/4STB__HLF	10.0	8.4	4.0	4.1
10	SFV10R-3/4STB__HLF	10.5	8.9	4.5	4.6
11	SFV11R-3/4STB__HLF	11.0	9.4	5.0	5.1
12	SFV12R-3/4STB__HLF	11.5	9.9	5.5	5.6
13	SFV13R-3/4STB__HLF	12.0	10.4	6.0	6.1
14	SFV14R-3/4STB__HLF	12.5	10.9	6.5	6.6
15	SFV15R-3/4STB__HLF	13.0	11.4	7.0	7.1
16	SFV16R-3/4STB__HLF	13.5	11.9	7.5	7.6
17	SFV17R-3/4STB__HLF	14.0	12.4	8.0	8.1
18	SFV18R-3/4STB__HLF	14.5	12.9	8.5	8.6
19	SFV19R-3/4STB__HLF	15.0	13.4	9.0	9.1
20	SFV20R-3/4STB__HLF	15.5	13.9	9.5	9.6
21	SFV21R-3/4STB__HLF	16.0	14.4	10.0	10.1
22	SFV22R-3/4STB__HLF	16.5	14.9	10.5	10.6
23	SFV23R-3/4STB__HLF	17.0	15.4	11.0	11.1
24	SFV24R-3/4STB__HLF	17.5	15.9	11.5	11.6
25	SFV25R-3/4STB__HLF	18.0	16.4	12.0	12.1
26	SFV26R-3/4STB__HLF	18.5	16.9	12.5	12.6
27	SFV27R-3/4STB__HLF	19.0	17.4	13.0	13.1
28	SFV28R-3/4STB__HLF	19.5	17.9	13.5	13.6
29	SFV29R-3/4STB__HLF	20.0	18.4	14.0	14.1
30	SFV30R-3/4STB__HLF	20.5	18.9	14.5	14.6
31	SFV31R-3/4STB__HLF	21.0	19.4	15.0	15.1
32	SFV32R-3/4STB__HLF	21.5	19.9	15.5	15.6
33	SFV33R-3/4STB__HLF	22.0	20.4	16.0	16.1
34	SFV34R-3/4STB__HLF	22.5	20.9	16.5	16.6
35	SFV35R-3/4STB__HLF	23.0	21.4	17.0	17.1

CAT. NO.

SFV (n) R - 3 ST B __ HLF

SERIES NAME

NO. OF CONTACTS

RIGHT ANGLE TYPE

FOR FPC,
WITH CABLE LOCK MECHANISM

CONTACT DIRECTION

3: LOWER CONTACT TYPE

4: UPPER CONTACT TYPE

FOR AUTOMATIC MOUNTING
(SMT)

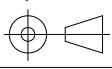

PLATING VARIATION

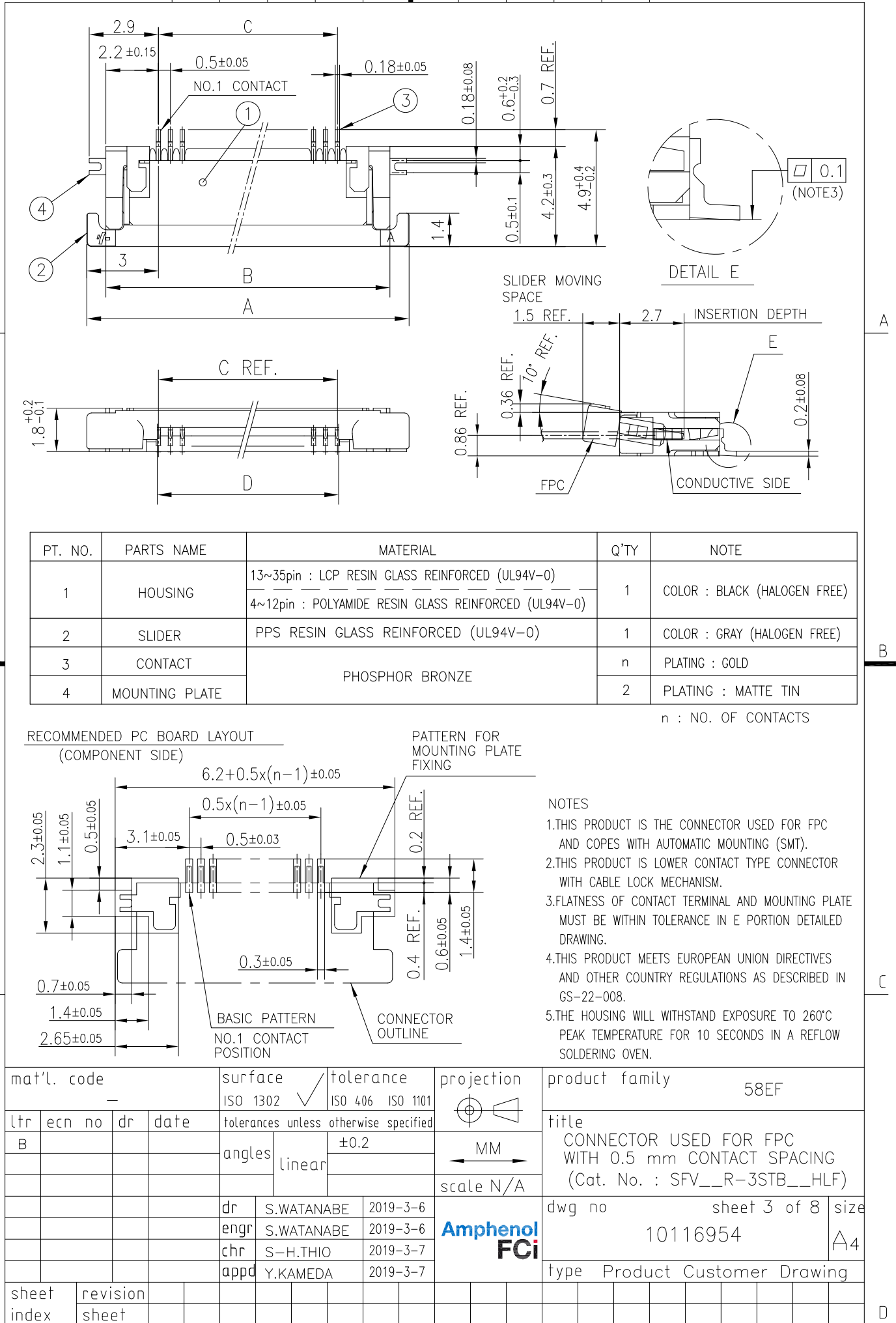
PACKAGE STYLE

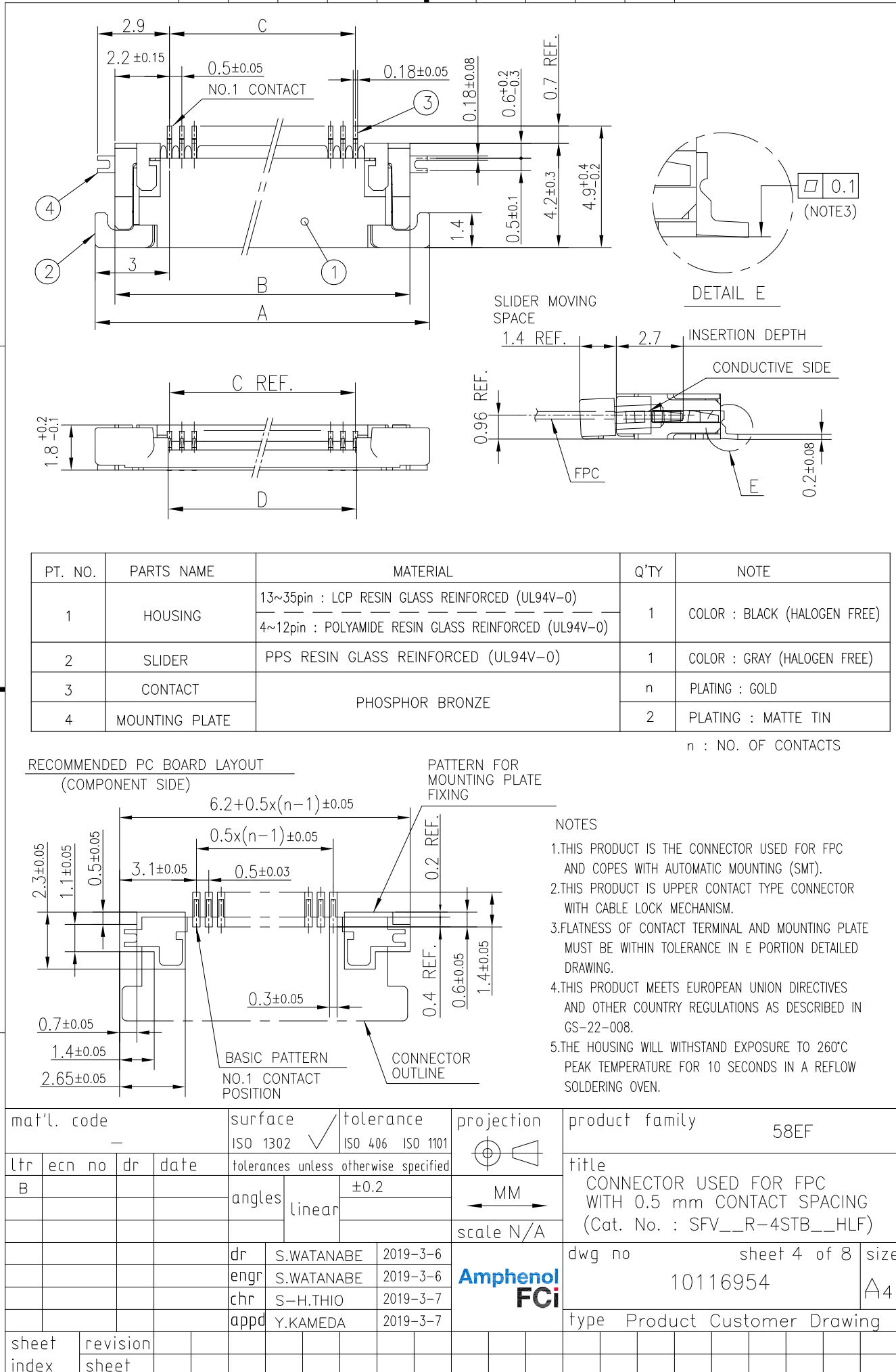
HALOGEN AND LEAD FREE

NOTES

1. THIS PRODUCT IS THE CONNECTOR USED FOR FPC AND CYPES WITH AUTOMATIC MOUNTING (SMT).
2. SEE PART DRAWINGS FOR DIMENSIONS A~D.
3. THIS PRODUCT IS THE CONNECTOR WITH CABLE LOCK MECHANISM.

mat'l. code				surface ISO 1302		tolerance ISO 406 ISO 1101		projection		product family 58EF											
ltr	ecn no	dr	date	tolerances unless otherwise specified				 MM scale N/A		title CAT. NO. TABLE FOR 0.5 mm CONTACT SPACING CONNECTOR (Cat. No. : SFV__R-3/4STB__HLF)											
B				angles		linear															
				dr	S.WATANABE	2019-3-6				dwg no 10116954 sheet 2 of 8 size A4											
				engr	S.WATANABE	2019-3-6															
				chr	S-H.THIO	2019-3-7															
				appd	Y.KAMEDA	2019-3-7															
sheet index		revision sheet																			





CAT. NO. & DIMENSIONS

NO. OF CONTACTS (n)	CAT. NO.	DIMENSIONS (NOTE3)		
		F ± 5	G ± 0.3	H ± 0.1
4	SFV 4R-3/4STBE1HLF	20.4	16	—
5	SFV 5R-3/4STBE1HLF	20.4	16	—
6	SFV 6R-3/4STBE1HLF	20.4	16	—
7	SFV 7R-3/4STBE1HLF	28.4	24	—
8	SFV 8R-3/4STBE1HLF	28.4	24	—
9	SFV 9R-3/4STBE1HLF	28.4	24	—
10	SFV10R-3/4STBE1HLF	28.4	24	—
11	SFV11R-3/4STBE1HLF	28.4	24	—
12	SFV12R-3/4STBE1HLF	28.4	24	—
13	SFV13R-3/4STBE1HLF	28.4	24	—
14	SFV14R-3/4STBE1HLF	28.4	24	—
15	SFV15R-3/4STBE1HLF	28.4	24	—
16	SFV16R-3/4STBE1HLF	28.4	24	—
17	SFV17R-3/4STBE1HLF	28.4	24	—
18	SFV18R-3/4STBE1HLF	28.4	24	—
19	SFV19R-3/4STBE1HLF	28.4	24	—
20	SFV20R-3/4STBE1HLF	28.4	24	—
21	SFV21R-3/4STBE1HLF	28.4	24	—
22	SFV22R-3/4STBE1HLF	28.4	24	—
23	SFV23R-3/4STBE1HLF	36.4	32	28.4
24	SFV24R-3/4STBE1HLF	36.4	32	28.4
25	SFV25R-3/4STBE1HLF	36.4	32	28.4
26	SFV26R-3/4STBE1HLF	36.4	32	28.4
27	SFV27R-3/4STBE1HLF	36.4	32	28.4
28	SFV28R-3/4STBE1HLF	36.4	32	28.4
29	SFV29R-3/4STBE1HLF	36.4	32	28.4
30	SFV30R-3/4STBE1HLF	36.4	32	28.4
31	SFV31R-3/4STBE1HLF	48.4	44	40.4
32	SFV32R-3/4STBE1HLF	48.4	44	40.4
33	SFV33R-3/4STBE1HLF	48.4	44	40.4
34	SFV34R-3/4STBE1HLF	48.4	44	40.4
35	SFV35R-3/4STBE1HLF	48.4	44	40.4

CAT. NO. SFV (n) R - 3 ST B E1 HLF

SERIES NAME SFV

NO. OF CONTACTS (n)

RIGHT ANGLE TYPE R

FOR FPC,
WITH CABLE LOCK MECHANISM - 3

CONTACT DIRECTION ST

3: LOWER CONTACT TYPE
4: UPPER CONTACT TYPE

FOR AUTOMATIC MOUNTING (SMT) B

PLATING VARIATION E1

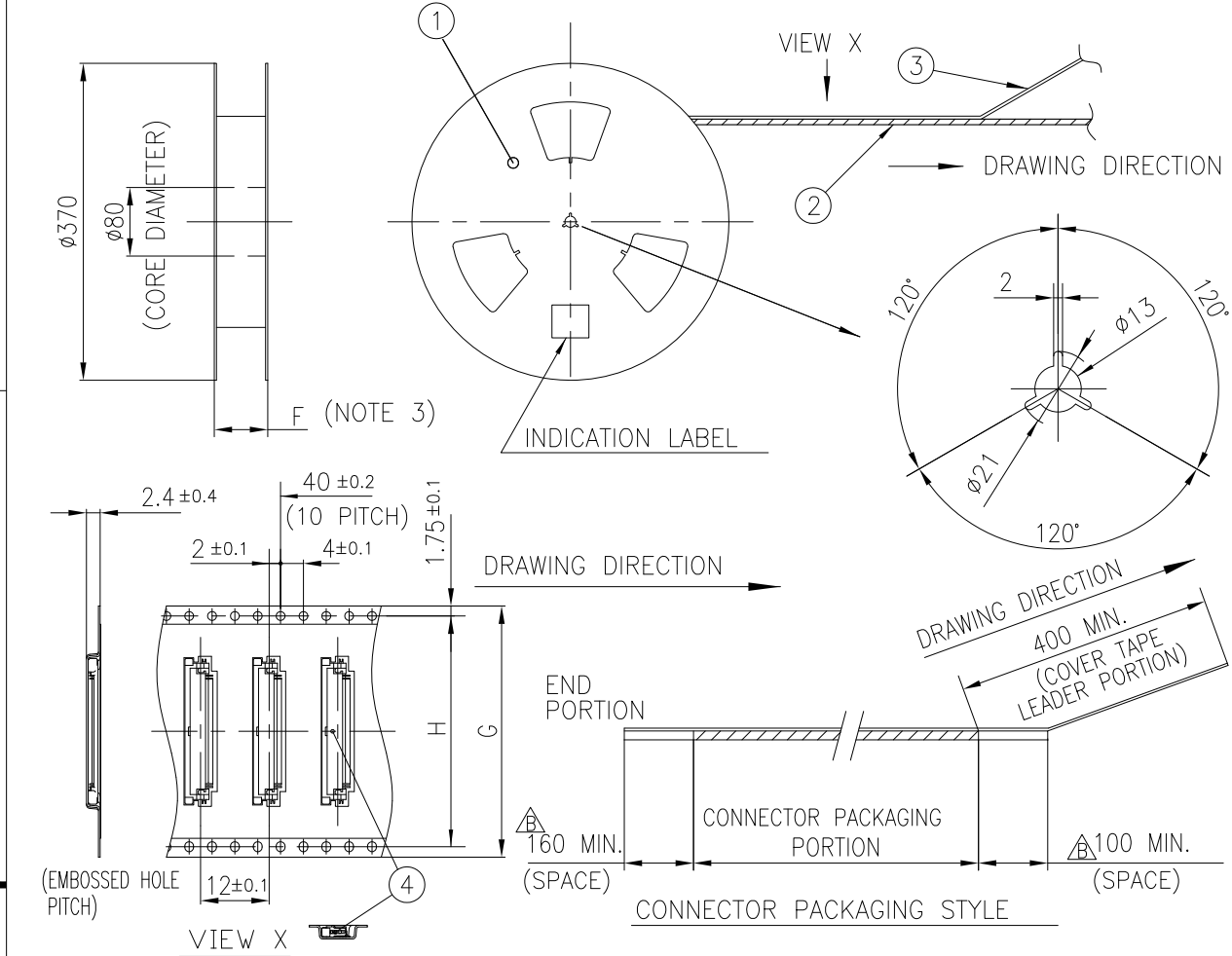
PACKAGE STYLE HLF

HALOGEN FREE AND LEAD FREE

NOTES

- THIS PRODUCT IS THE CONNECTOR USED FOR FPC AND CYPES WITH AUTOMATIC MOUNTING (SMT).
- THIS CATALOG NO. INDICATES PLASTIC TAPE PACKAGED
- SEE PART DRAWINGS FOR DIMENSIONS F~H.
- THIS PRODUCT IS THE CONNECTOR WITH CABLE LOCK MECHANISM.

mat'l. code				surface ISO 1302		tolerance ISO 406 ISO 1101		projection		product family 58EF			
ltr	ecn no	dr	date	tolerances unless otherwise specified				MM		title			
B				angles	linear			scale N/A		CAT. NO. TABLE FOR PLASTIC TAPE PACKAGED 0.5 mm CONTACT SPACING CONNECTOR (Cat. No. : SFV__R-3/4STBE1HLF)			
				dr	S.WATANABE	2019-3-6		Amphenol FCI		dwg no		sheet 5 of 8	size
				engr	S.WATANABE	2019-3-6				10116954		A4	
				chr	S-H.THIO	2019-3-7							
				appd	Y.KAMEDA	2019-3-7							
sheet index		revision sheet											

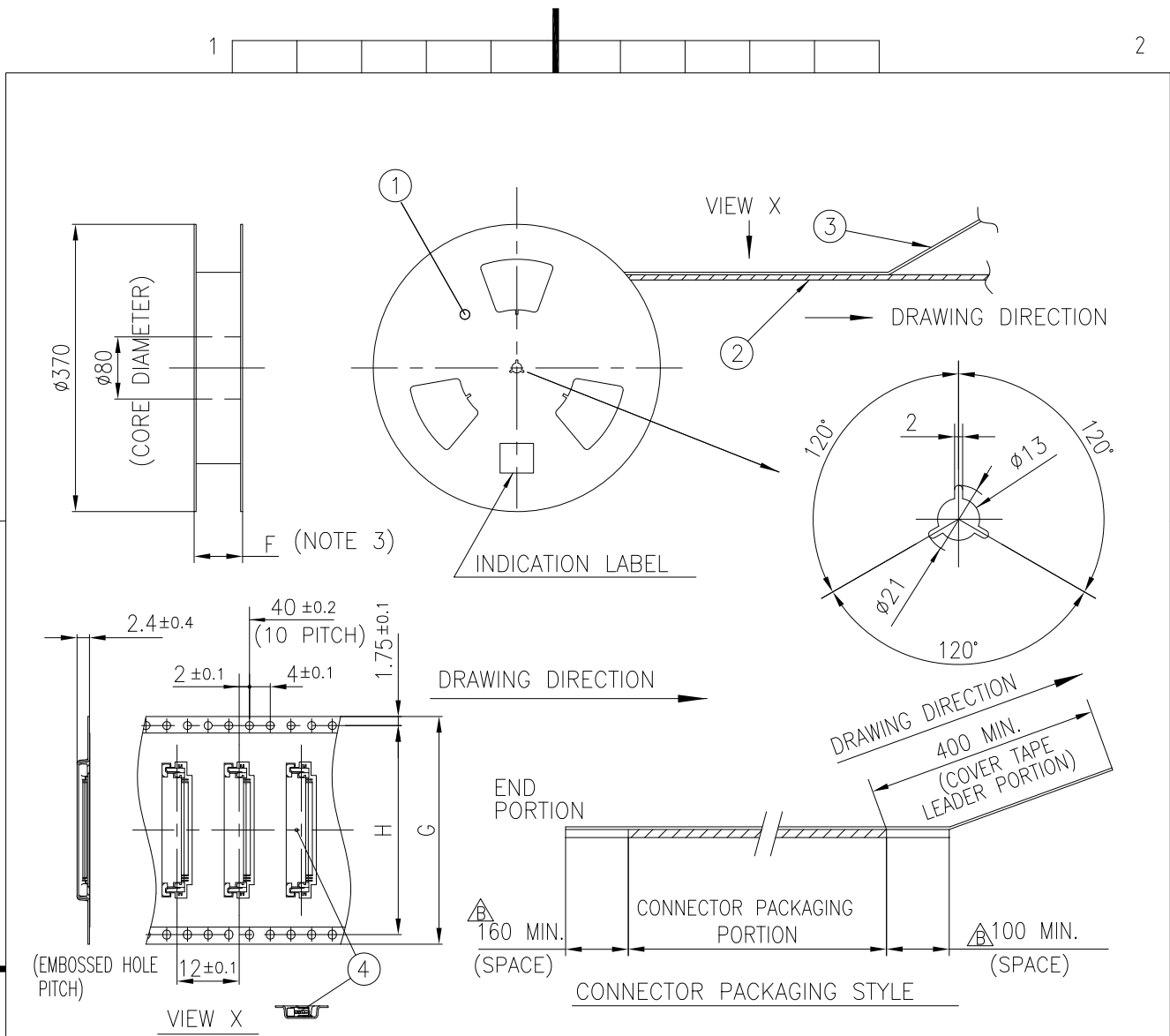


PT. NO.	PARTS NAME	CAT. NO.	MATERIAL	Q'TY	NOTE
1	REEL	_____	CARDBOARD	1	COLOR : WHITE
2	PLASTIC (EMBOSS) TAPE	_____	△ PS or A-PET	—	COLOR : TRANSPARENCY
3	COVER	_____	△ POLYESTER,POLYETHYLENE	—	COLOR : TRANSPARENCY
4	CONNECTOR	SFV__R-3STB__HLF	SEE SHEET 3	3000	LOWER CONTACT TYPE WITH CABLE LOCK MECHANISM

NOTES

- THIS IS PLASTIC TAPE PACKAGED CONNECTOR USED FOR FPC AND CYPES WITH AUTOMATIC MOUNTING (SMT).
- SEE JIS C 0806 (PACKING OF ELECTRONIC COMPONENTS ON CONTINUOUS TAPES (SURFACE MOUNTING DEVICES)) FOR SHAPE AND DIMENSIONS OF PLASTIC (EMBOSS) TAPE AND REEL.
- F DIMENSION IS PORTION OF THE CORE.

mat'l. code				surface ISO 1302		tolerance ISO 406 ISO 1101		projection		product family 58EF			
ltr				ecn no		dr		date		tolerances unless otherwise specified		title	
B										angles		PLASTIC TAPE PACKAGED	
										linear		0.5 mm CONTACT SPACING CONNECTOR	
										±5°		(Cat. No. : SFV__R-3STBE1HLF)	
										scale N/A		dwg no	
										Amphenol FCI		sheet 6 of 8	
												10116954	
												A4	
												type Product Customer Drawing	
sheet index				revision sheet									



PT. NO.	PARTS NAME	CAT. NO.	MATERIAL	Q'TY	NOTE
1	REEL		CARDBOARD	1	COLOR : WHITE
2	PLASTIC (EMBOSS) TAPE		PS or A-PET		COLOR : TRANSPARENCY
3	COVER		POLYESTER,POLYETHYLENE		COLOR : TRANSPARENCY
4	CONNECTOR	SFV__R-4STB__HLF	SEE SHEET 4	3000	UPPER CONTACT TYPE WITH CABLE LOCK MECHANISM

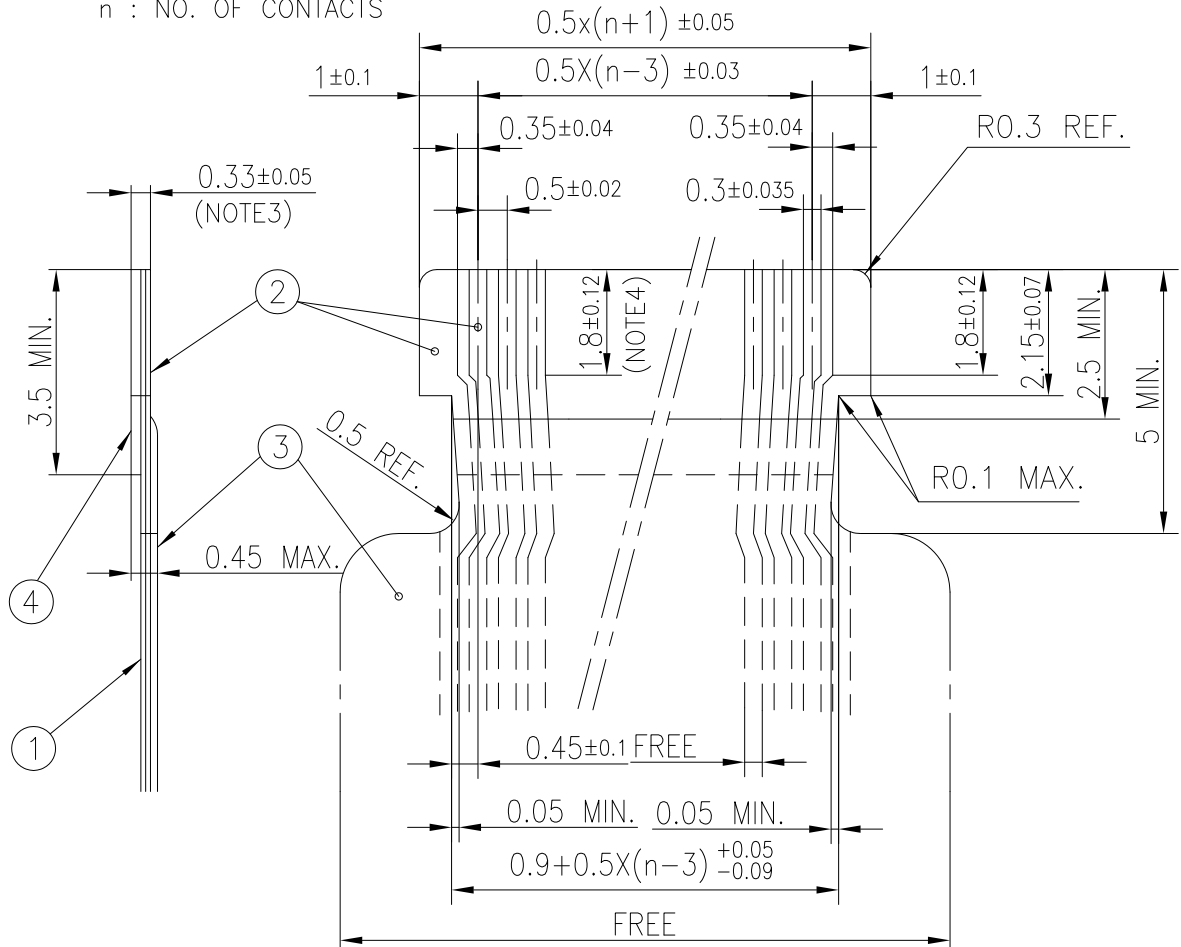
NOTES

- THIS IS PLASTIC TAPE PACKAGED CONNECTOR USED FOR FPC AND COPES WITH AUTOMATIC MOUNTING (SMT).
- SEE JIS C 0806 (PACKING OF ELECTRONIC COMPONENTS ON CONTINUOUS TAPES (SURFACE MOUNTING DEVICES)) FOR SHAPE AND DIMENSIONS OF PLASTIC (EMBOSS) TAPE AND REEL.
- F DIMENSION IS PORTION OF THE CORE.

mat'l. code				surface ISO 1302		tolerance ISO 406 ISO 1101		projection		product family 58EF									
ltr				ecn no		dr		date		tolerances unless otherwise specified		title							
B										angles		±5		PLASTIC TAPE PACKAGED					
										linear				0.5 mm CONTACT SPACING CONNECTOR					
										±5°				(Cat. No. : SFV__R-4STBE1HLF)					
										dr		S.WATANABE		2019-3-6		dwg no			
										enr		S.WATANABE		2019-3-6		sheet 7 of 8			
										chr		S-H.THIO		2019-3-7		size			
										appd		Y.KAMEDA		2019-3-7		A4			
sheet index				revision sheet												type Product Customer Drawing			

RECOMMENDED CABLE (FPC)

n : NO. OF CONTACTS



PT. NO.	PARTS NAME	MATERIAL	THICKNESS (um)
1	BASE FILM	POLYIMIDE OR POLYESTER OR EQUAL	25
2	CONDUCTOR	COPPER FOIL(PLATING : GOLD)	35
3	OVERLAY	POLYIMIDE OR POLYESTER OR EQUIVALENT	—
4	SUPPORTING TAPE	POLYESTER OR POLYIMIDE OR EQUIVALENT	188

NOTES

1. NO BURR AT EACH PORTION.
2. NO PEELING IN COMMON USE.
3. TOTAL THICKNESS LIMIT OF EACH MATERIAL (INCLUDING ADHESIVE AGENT) IS SPECIFIED.
4. THIS DIMENSION INDICATES THE RANGE FOR 0.3±0.035 CONDUCTOR WIDTH.

mat'l. code				surface 58/	tolerance	projection	product family
—				ISO 1302	ISO 406 ISO 1101	⊕	58EF
ltr	ecn no	dr	date	tolerances unless otherwise specified		MM	title
B				angles	linear		
						scale N/A	RECOMMENDED CABLE (Cat. No. : SFV__R-3/4STB__HLF)
				dr	S.WATANABE	2019-3-6	dwg no 10116954 sheet 8 of 8 size A4
				engr	S.WATANABE	2019-3-6	
				chr	S-H.THIO	2019-3-7	
				appd	Y.KAMEDA	2019-3-7	
sheet index	revision sheet						type Product Customer Drawing

Mouser Electronics

Authorized Distributor

Click to View Pricing, Inventory, Delivery & Lifecycle Information:

[FCI / Amphenol:](#)

[SFV30R-3STBE9HLF](#)