



FCIconnect.com

Copyright FCI.

CONFIGURATION OF CUSTOMER DOCUMENTS

P/N	DOCUMENTS	DWG. NO.	TITLE
HLW__R/S-2A7HLF	SPEC	GS-12-680	CONNECTOR USED FOR FPC/FFC WITH 1mm CONTACT SPACING
	CONNECTOR	10039761 Sheet2	CAT NO.TABLE FOR 1mm SPACING CONNECTOR
		10039761 Sheet3	1mm SPACING CONNECTOR FOR FPC/FFC
		10039761 Sheet4	1mm SPACING CONNECTOR FOR FPC/FFC
	CABLE	10039761 Sheet5	RECOMMENDED CABLE(FPC)
	MANUAL	10039761 Sheet6	RECOMMENDED CABLE(FFC)
		BJM-HLW101	HANDLING PROCEDURES AND REMARKS

mat'l. code				surface 58 / tolerance ISO 1302 <input checked="" type="checkbox"/> ISO 406 <input type="checkbox"/> ISO 1101		projection		product family 58PF/QF		CODE JP	
ltr		ecn no		dr		date		title			
A		J10-0334		S.W		2010-11-16		1mm SPACING CONNECTOR DOCUMENT LIST			
								(Cat. No. HLW__R/S-2A7HLF)			
								scale \times			
								dwg no sheet 1 of 6 size			
								10039761 A4			
								type Product Customer Drawing			
sheet index		revision sheet		A 1		A 2		A 3		A 4	
										Rev. A	

form: A4

1

2

CAT. NO. & DIMENSIONS

NO. OF CONTACTS (n)	CAT. NO.		DIMENSIONS (NOTE1)		
	RIGHT ANGLE TYPE	STRAIGHT TYPE	A ± 0.3	B ± 0.1	C ± 0.3
4	HLW 4 R-2A7HLF	HLW 4 S-2A7HLF	6.6	5.12	3.0
5	HLW 5 R-2A7HLF	HLW 5 S-2A7HLF	7.6	6.12	4.0
6	HLW 6 R-2A7HLF	HLW 6 S-2A7HLF	8.6	7.12	5.0
7	HLW 7 R-2A7HLF	HLW 7 S-2A7HLF	9.6	8.12	6.0
8	HLW 8 R-2A7HLF	HLW 8 S-2A7HLF	10.6	9.12	7.0
9	HLW 9 R-2A7HLF	HLW 9 S-2A7HLF	11.6	10.12	8.0
10	HLW 10 R-2A7HLF	HLW 10 S-2A7HLF	12.6	11.12	9.0
11	HLW 11 R-2A7HLF	HLW 11 S-2A7HLF	13.6	12.12	10.0
12	HLW 12 R-2A7HLF	HLW 12 S-2A7HLF	14.6	13.12	11.0
13	HLW 13 R-2A7HLF	HLW 13 S-2A7HLF	15.6	14.12	12.0
14	HLW 14 R-2A7HLF	HLW 14 S-2A7HLF	16.6	15.12	13.0
15	HLW 15 R-2A7HLF	HLW 15 S-2A7HLF	17.6	16.12	14.0
16	HLW 16 R-2A7HLF	HLW 16 S-2A7HLF	18.6	17.12	15.0
17	HLW 17 R-2A7HLF	HLW 17 S-2A7HLF	19.6	18.12	16.0
18	HLW 18 R-2A7HLF	HLW 18 S-2A7HLF	20.6	19.12	17.0
19	HLW 19 R-2A7HLF	HLW 19 S-2A7HLF	21.6	20.12	18.0
20	HLW 20 R-2A7HLF	HLW 20 S-2A7HLF	22.6	21.12	19.0
21	HLW 21 R-2A7HLF	HLW 21 S-2A7HLF	23.6	22.12	20.0
22	HLW 22 R-2A7HLF	HLW 22 S-2A7HLF	24.6	23.12	21.0
23	HLW 23 R-2A7HLF	HLW 23 S-2A7HLF	25.6	24.12	22.0
24	HLW 24 R-2A7HLF	HLW 24 S-2A7HLF	26.6	25.12	23.0
25	HLW 25 R-2A7HLF	HLW 25 S-2A7HLF	27.6	26.12	24.0
26	HLW 26 R-2A7HLF	HLW 26 S-2A7HLF	28.6	27.12	25.0
27	HLW 27 R-2A7HLF	HLW 27 S-2A7HLF	29.6	28.12	26.0
28	HLW 28 R-2A7HLF	HLW 28 S-2A7HLF	30.6	29.12	27.0
29	HLW 29 R-2A7HLF	HLW 29 S-2A7HLF	31.6	30.12	28.0
30	HLW 30 R-2A7HLF	HLW 30 S-2A7HLF	32.6	31.12	29.0
31	HLW 31 R-2A7HLF	HLW 31 S-2A7HLF	33.6	32.12	30.0
32	HLW 32 R-2A7HLF	HLW 32 S-2A7HLF	34.6	33.12	31.0

CAT. NO. HLW (n) R - 2A7 HLF

SERIES _____

NO. OF CONTACTS _____

R : RIGHT ANGLE TYPE

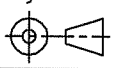

S : STRAIGHT TYPE

VARIATION _____

LEAD AND HALOGEN FREE _____

NOTES

1. SEE PART DRAWINGS FOR DIMENSIONS A~C.

mat'l. code				surface 58 / tolerance ISO 1302 ✓ ISO 406 ISO 1101		projection 		product family 58PF/QF		CODE JP	
ltr	ecn no	dr	date	tolerances unless otherwise specified		mm		title CAT NO. TABLE FOR 1mm SPACING CONNECTOR (Cat. No. HLW__R/S-2A7HLF)			
A				angles	linear	scale X					
				dr	S. H. Chandra 2010-11-16			dwg no		sheet 2 of 6	size
				engr	S. H. Chandra 2010-11-16			10039761		A4	
				chr	S. H. Chandra 2010-11-16						
				appd	S. H. Chandra 2010-11-16						
sheet index	revision	sheet									Rev. A

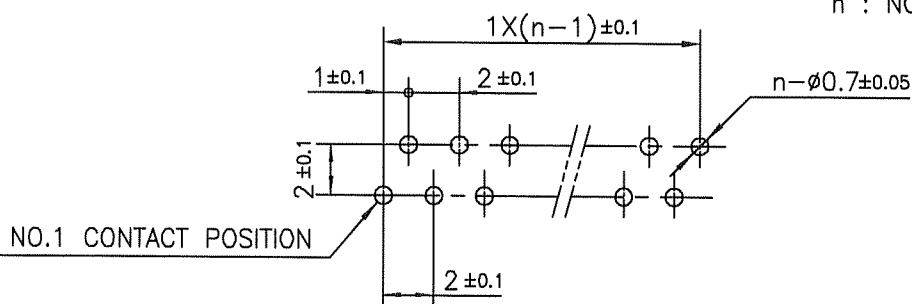


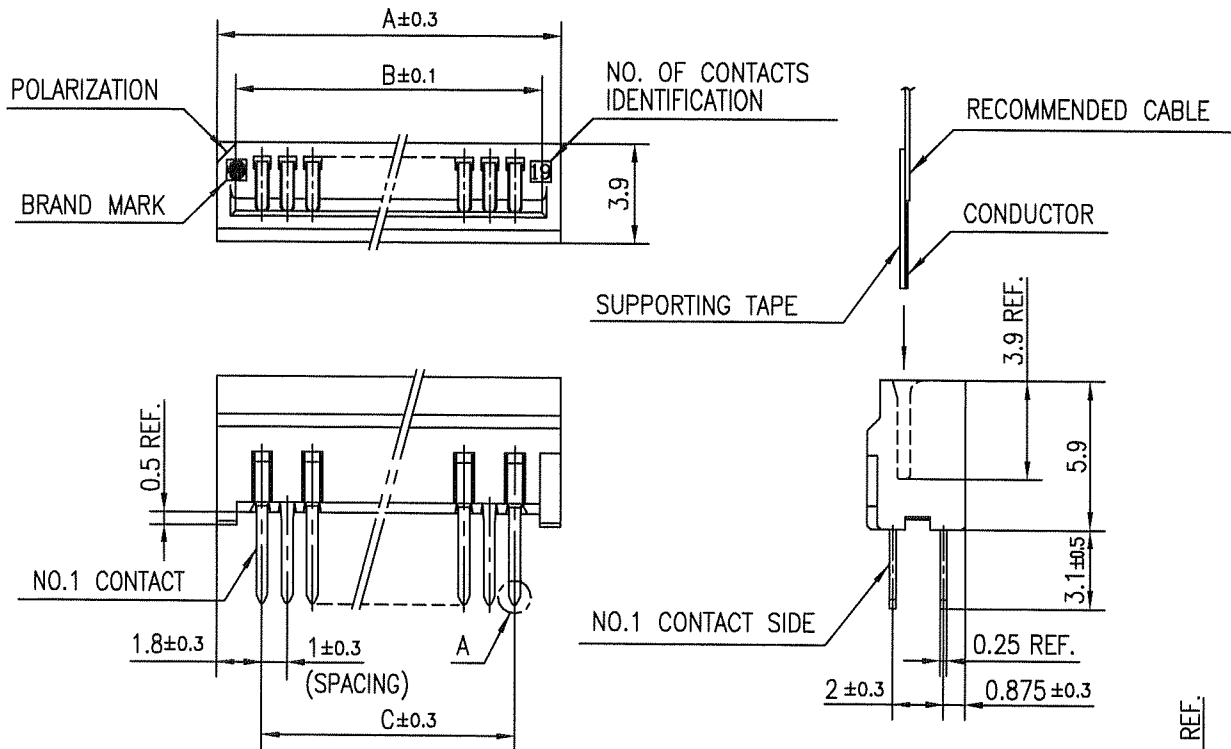
INSULATOR : LCP RESIN GLASS REINFORCED (UL94V-0)
COLOR : BLACK
CONTACT : PHOSPHER BRONZE
PLATING : TIN

1. THIS PRODUCT IS RIGHT ANGLE TYPE CONNECTOR.
2. THIS PRODUCT MEETS EUROPEAN UNION DIRECTIVES AND OTHER COUNTRY REGULATIONS AS DESCRIBED IN GS-22-008.
3. THE HOUSING WILL WITHSTAND EXPOSURE TO 260°C PEAK TEMPERATURE FOR 10 SECONDS IN A REFLOW SOLDERING OVEN.

THICKNESS : 1.2~1.6
HOLE PATTERN (COMPONENT SIDE)

n : NO. OF CONTACTS

[illegible]



MATERIAL

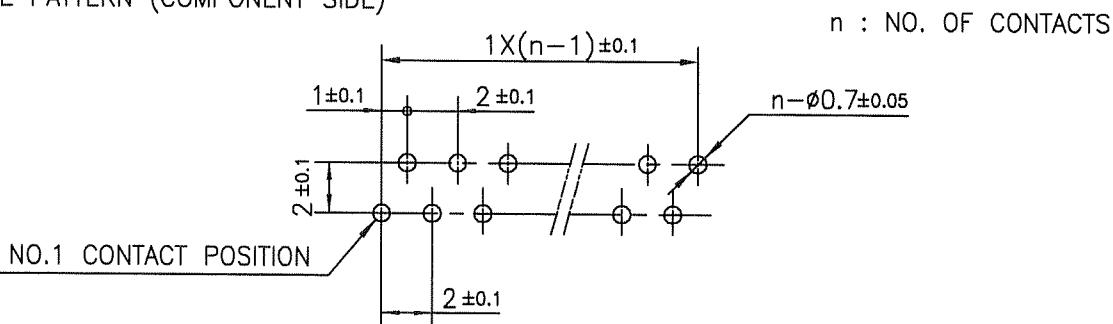
INSULATOR : PBT RESIN GLASS REINFORCED (UL94V-0)
 COLOR : BLACK
 CONTACT : PHOSPHOR BRONZE
 PLATING : TIN

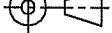
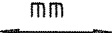

NOTE

1. THIS PRODUCT IS RIGHT ANGLE TYPE CONNECTOR.
2. THIS PRODUCT MEETS EUROPEAN UNION DIRECTIVES AND OTHER COUNTRY REGULATIONS AS DESCRIBED IN GS-22-008.
3. THE HOUSING WILL WITHSTAND EXPOSURE TO 260°C PEAK TEMPERATURE FOR 10 SECONDS IN A REFLOW SOLDERING OVEN.

RECOMMENDED PC BOARD

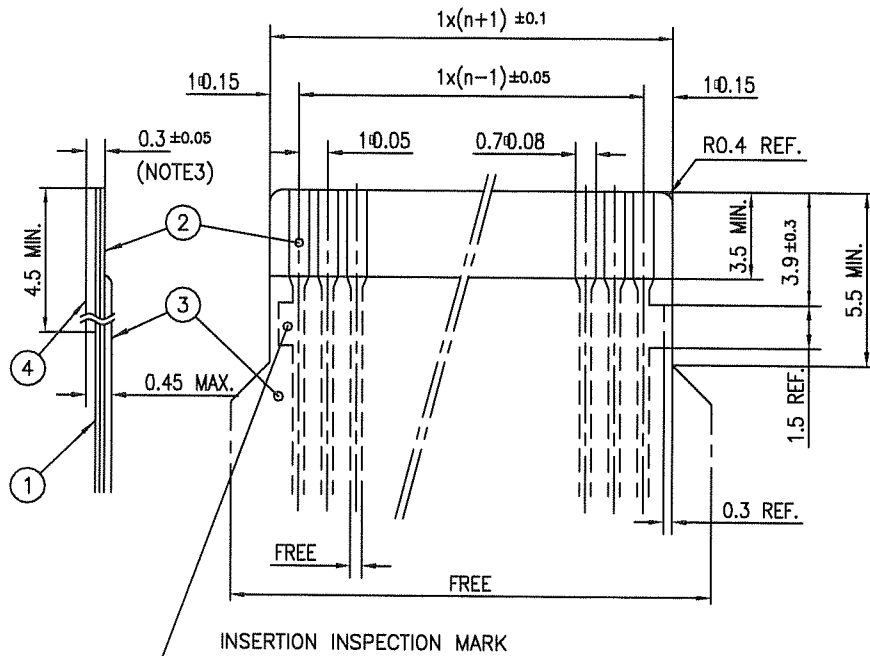
THICKNESS : 1.2~1.6
 HOLE PATTERN (COMPONENT SIDE)



mat'l. code				surface 58 ISO 1302		tolerance ISO 406 ISO 1101		projection 		product family 58QF				CODE JP			
ltr ecn no dr date				tolerances unless otherwise specified								title 1mm SPACING CONNECTOR FOR FPC/FFC (Cat. No. HLW__S-2A7HLF)					
A				angles		linear		mm									
				dr		S. Witala 2010-11-16				dwg no				sheet 4 of 6		size	
				enrg		S. Witala 2010-11-16				10039761				A4			
				chr		Y. Ramada 2010-11-16											
				appd		M. Kern Number											
sheet index		revision sheet														Rev. A	

RECOMMENDED CABLE (FPC)

n : NO. OF CONDUCTORS



PT. NO.	DESCRIPTION	MATERIAL	THICKNESS (*m)
1	BASE FILM	POLYIMIDE OR POLYESTER OR EQUIVALENT	25
2	CONDUCTOR	COPPER FOIL (PLATING : TIN or SOLDER 1*m MIN.)	35
3	OVERLAY	POLYIMIDE OR POLYESTER OR EQUIVALENT	—
4	SUPPORTING TAPE	POLYESTER OR POLYIMIDE OR EQUIVALENT	188

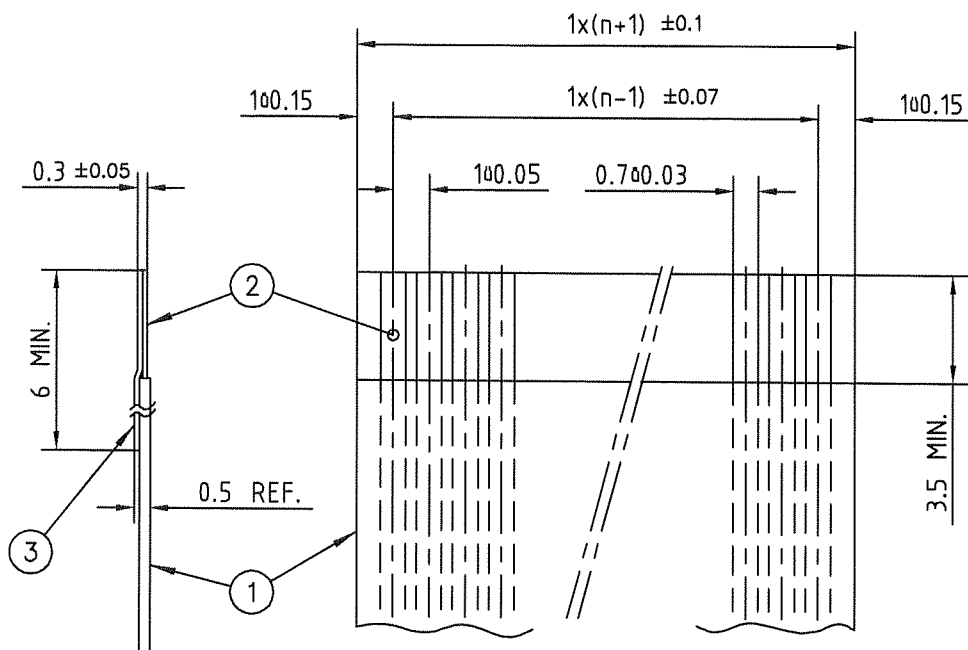
NOTES

1. NO BURR AT EACH PORTION.
2. NO PEELING IN COMMON USE.
3. TOTAL THICKNESS LIMIT OF EACH MATERIAL (INCLUDING ADHESIVE AGENT) IS SPECIFIED.

mat'l. code				surface 58 / tolerance ISO 1302 <input checked="" type="checkbox"/> ISO 406 ISO 1101		projection		product family 58PF/QF		CODE JP	
ltr	ecn no	dr	date	tolerances, unless otherwise specified				title			
A				angles	linear	mm		RECOMMENDED CABLE (FPC) (Cat. No. HLW__R/S-__LF)			
						scale \times		dwg no			
				dr	S. Watanabe	2010-11-16		sheet 5 of 6		size	
				enr	S. Watanabe	2010-11-16		10039761		A4	
				chr	Y. Yamada	2010-11-16					
				appd	M. Maeda	NDV16/10					
sheet index		revision sheet						type Product Customer Drawing		Rev. A	

RECOMMENDED CABLE (FFC)

n : NO. OF CONDUCTORS



PT. NO.	DESCRIPTION	MATERIAL	NOTE
1	INSULATOR	FLAME RESISTING POLYESTER OR EQUIVALENT	_____
2	CONDUCTOR	COPPER FOIL	PLATING : TIN OR SOLDER 1 ^m MIN.
3	SUPPORTING TAPE	FLAME RESISTING POLYESTER OR EQUIVALENT	_____

NOTES

1. NO BURR AT EACH PORTION.
2. NO PEELING IN COMMON USE.

mat'l. code				surface 58 / tolerance ISO 1302 / ISO 406 / ISO 1101		projection		product family 58PF/QF		CODE JP	
ltr	ecn no	dr	date	tolerances unless otherwise specified		mm		title			
A				angles linear		scale X		RECOMMENDED CABLE (FFC) (Cat. No. HLW__R/S-__HLF)			
				dr		FCI		dwg no			
				enr				sheet 6 of 6			
				chr				10039761			
				appd				type Product Customer Drawing			
sheet index		revision sheet								Rev. A	

Mouser Electronics

Authorized Distributor

Click to View Pricing, Inventory, Delivery & Lifecycle Information:

[FCI / Amphenol:](#)

[HLW22S-2A7HLF](#) [HLW11S-2A7HLF](#)