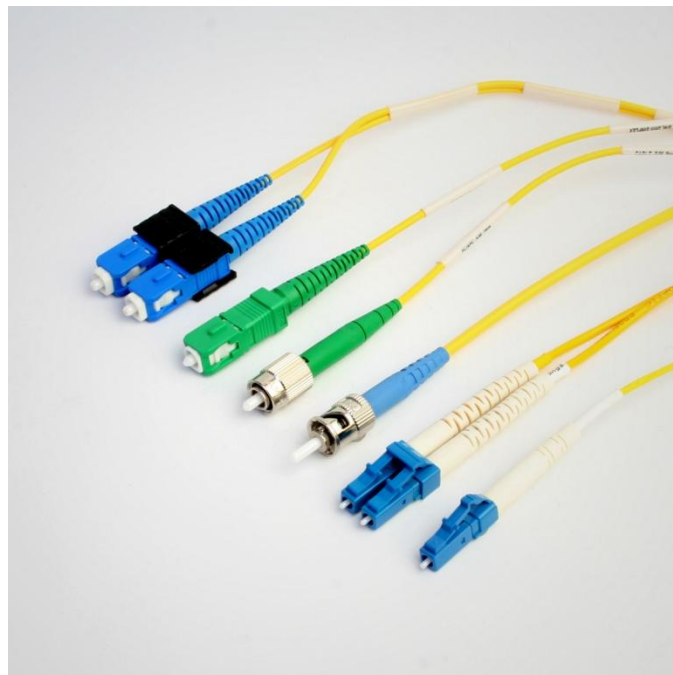


# 942 Singlemode Cable Assemblies

Amphenol is a premier manufacturer of Singlemode patchords in the telecommunications industry, meeting or exceeding many of the industry standard requirements for optical transmission loss, reflectance, visual endface specifications, and geometry. Amphenol offers standard patch cords in a variety of configurations and connector types. Both standard SMF-28e and bend reduced fiber types are available. Custom options are available upon request.



## Features/Benefits

- Available in a wide variety of connector types, cable designs, and lengths
- All assemblies meet TIA/EIA and IEC intermateability standards
- Duplex assembly version utilizes a removable flexible clip providing a float between channels A and B
- RoHS compliant
- Multiple boot size, colors and angle options available
- Assemblies are available in standard SMF-28e and Bend reduced fiber types .
- Custom configurations available upon request

## Specifications

**Insertion Loss:**  $\leq 0.15\text{dB}$  typical, Ultra  
 $\leq 0.25\text{dB}$  typical, Angle

**Return Loss:** Ultra (UPC)  $\leq -55\text{dB}$   
Angle (APC)  $\leq -65\text{dB}$

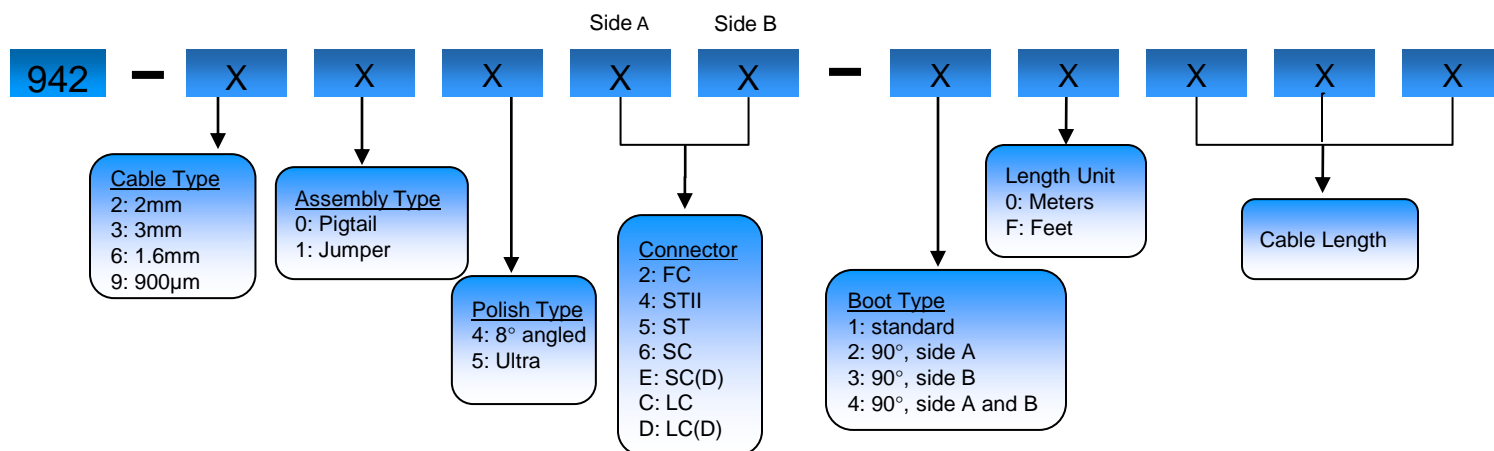
**Durability:**  $< 0.2\text{dB}$  change, 500mating cycles

**Temperature:** -20 to +75 C

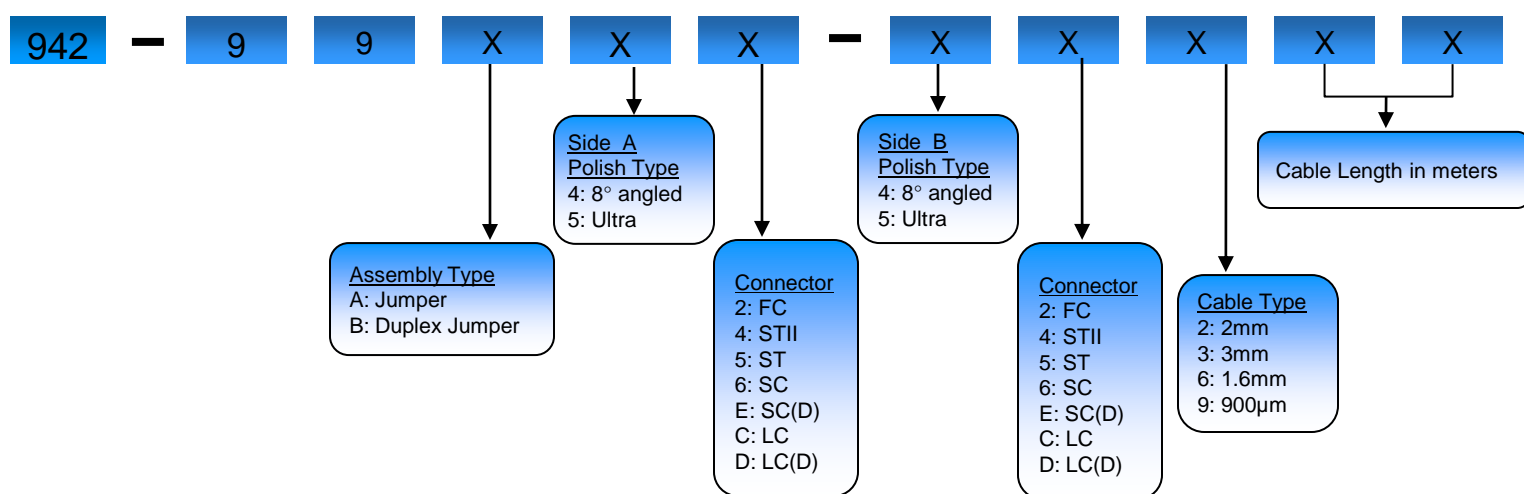
**Intermateability:**

The Amphenol Singlemode assemblies are mechanically and optically intermateable with industry standard connectors and adapters and conform to TIA/EIA, IEC, and Telcordia specifications.

## Standard Singlemode Assembly Ordering Information\*



## Standard Singlemode Hybrid Polish Jumper Ordering Information\*



\*Please contact Amphenol for custom configurations

# Mouser Electronics

Authorized Distributor

Click to View Pricing, Inventory, Delivery & Lifecycle Information:

[Amphenol:](#)

[942-31566-10010](#) [942-217CC-100.2](#) [942-215CC-100.2](#)