



FCIconnect.com

Copyright FCI.

Configuration of Documents

P/N	Documents	No.	Title	CAT.No.
SFW_S-2ST(M)AE1LF	Specification Connector dwg.	SC-SFWS05	CAT.NO.TABLE FOR 1mm SPACING SMT CONNECTOR	SFW_S-2ST_A_LF
		JSA96624	1mm SPACING SURFACE MOUNT FPC/FPC CONNECTOR	SFW_S-2STA_LF
		JSA96625	1mm SPACING SURFACE MOUNT FPC/FPC CONNECTOR	SFW_S-2STMA_LF
		JSA96626	CAT. NO. TABLE FOR PLASTIC TAPE PACKAGED 1mm SPACING SMT CONN.	SFW_S-2ST_AE1LF
		JSA96627	PLASTIC TAPE PACKAGED 1mm SPACING SMT CONNECTOR	SFW_S-2ST_AE1LF
SFW_S-2ST(M)AE5LF	Cable dwg.	JSA96628	RECOMMENDED CABLE	SFW_S-2ST_AE1LF
		JSA96629		SFW_S-2ST_
	Specification Connector dwg.	SC-SFWS05	CAT.NO.TABLE FOR 1mm SPACING SMT CONNECTOR	SFW_S-2ST_A_LF
		JSA96624	1mm SPACING SURFACE MOUNT FPC/FPC CONNECTOR	SFW_S-2STA_LF
SFW_S-2ST(M)AE5LF	Cable dwg.	JSA96626	1mm SPACING SURFACE MOUNT FPC/FPC CONNECTOR	SFW_S-2STMA_LF
		JSA97447	CAT. NO. TABLE FOR PLASTIC TAPE PACKAGED 1mm SPACING SMT CONN.	SFW_S-2ST_AE5LF
		JSA97448	PLASTIC TAPE PACKAGED 1mm SPACING SMT CONNECTOR	SFW_S-2ST_AE5LF
		JSA96629	RECOMMENDED CABLE	SFW_S-2ST_

mat'l. code				surface <input checked="" type="checkbox"/> ISO 1302 <input type="checkbox"/> tolerance <input checked="" type="checkbox"/> ISO 406 <input type="checkbox"/> ISO 1101		projection		product family 58SF		CODE JP	
ltr	ecn no	dr	date	tolerances unless otherwise specified				title SFW_S Documents Configuration (1mm Spacing connector)			
A	J05-0457	H.T	7/19/'05	angles	linear	mm					
B	J06-0430	H.T	10/19/'06			scale \propto					
C	J08-0338	H.T	2008-8-13								
				dr	<i>[Signature]</i> 2008-8-13			dwg no		sheet 1 of 1	size
				enr	<i>[Signature]</i> 2008-8-13			JSA96623		A4	
				chr	<i>[Signature]</i> 2008-8-13						
				app	<i>[Signature]</i> 2008-8-13						
sheet index		revision sheet		C	1					Rev. C	

form: A4

PDM: Rev:C

STATUS Released

Printed: Apr 28, 2009

CAT. NO. & DIMENSIONS

NOTE3	NO. OF CONTACTS (n)	CAT. NO.	DIMENSIONS (NOTE2)		
			A ±0.2	B ±0.2	C ±0.2
	4	SFW4S-2ST_A_LF	10.4	5.24	3
	5	SFW5S-2ST_A_LF	11.4	6.24	4
	6	SFW6S-2ST_A_LF	12.4	7.24	5
*	7	SFW7S-2ST_A_LF	13.4	8.24	6
	8	SFW8S-2ST_A_LF	14.4	9.24	7
*	9	SFW9S-2ST_A_LF	15.4	10.24	8
	10	SFW10S-2ST_A_LF	16.4	11.24	9
	11	SFW11S-2ST_A_LF	17.4	12.24	10
*	12	SFW12S-2ST_A_LF	18.4	13.24	11
	13	SFW13S-2ST_A_LF	19.4	14.24	12
	14	SFW14S-2ST_A_LF	20.4	15.24	13
	15	SFW15S-2ST_A_LF	21.4	16.24	14
	16	SFW16S-2ST_A_LF	22.4	17.24	15
	17	SFW17S-2ST_A_LF	23.4	18.24	16
*	18	SFW18S-2ST_A_LF	24.4	19.24	17
*	19	SFW19S-2ST_A_LF	25.4	20.24	18
	20	SFW20S-2ST_A_LF	26.4	21.24	19
*	21	SFW21S-2ST_A_LF	27.4	22.24	20
	22	SFW22S-2ST_A_LF	28.4	23.24	21
	23	SFW23S-2ST_A_LF	29.4	24.24	22
	24	SFW24S-2ST_A_LF	30.4	25.24	23
*	25	SFW25S-2ST_A_LF	31.4	26.24	24
	26	SFW26S-2ST_A_LF	32.4	27.24	25
*	27	SFW27S-2ST_A_LF	33.4	28.24	26
	28	SFW28S-2ST_A_LF	34.4	29.24	27
	29	SFW29S-2ST_A_LF	35.4	30.24	28
	30	SFW30S-2ST_A_LF	36.4	31.24	29
*	31	SFW31S-2ST_A_LF	37.4	32.24	30
*	32	SFW32S-2ST_A_LF	38.4	33.24	31

CAT. NO. SFW (n) S - 2 ST - A - - LF

SERIES ———

NO. OF CONTACTS ———

STRAIGHT TYPE ———

FOR FPC / FFC ———

VARIATION ———

STM : FOR AUTOMATIC MOUNTING (SMT)
WITH MOUNTING PLATE

ST : FOR AUTOMATIC MOUNTING (SMT)
WITHOUT MOUNTING PLATE

GOLD PLATING ———

PACKAGE STYLE ———

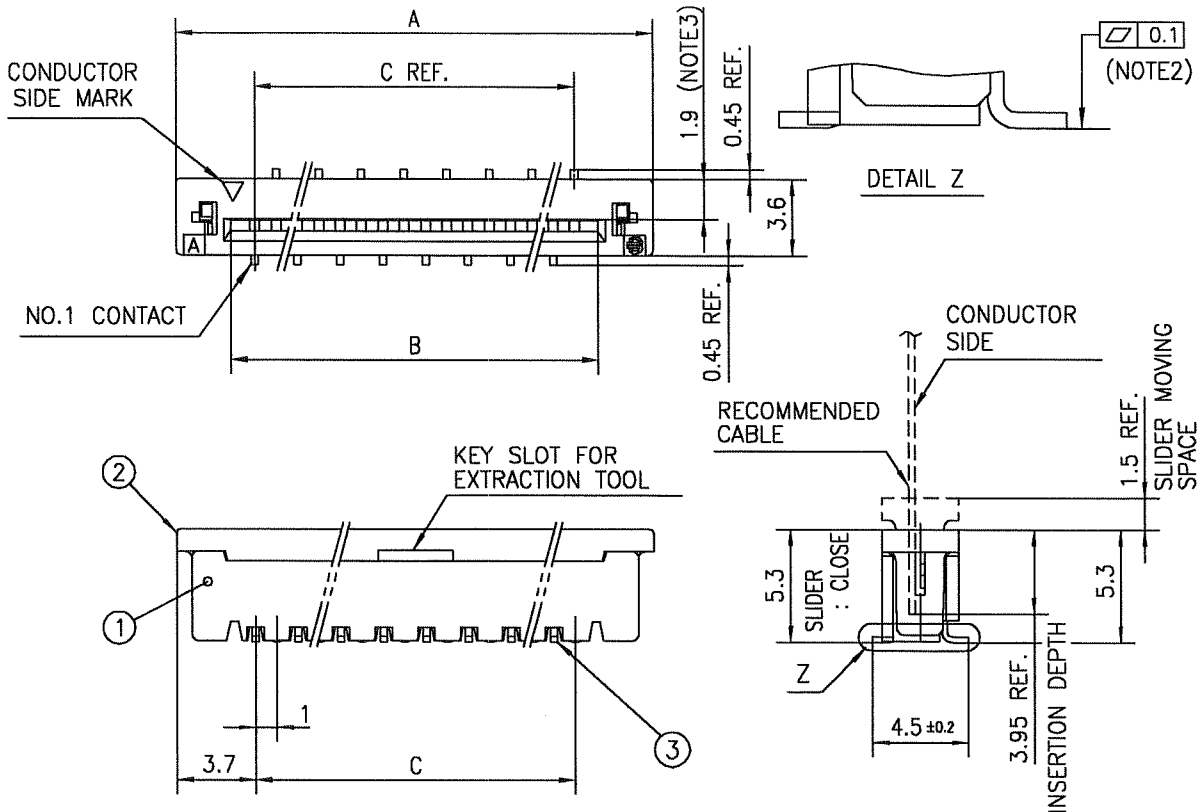
LEAD FREE ———

NOTES

- THIS PRODUCT IS THE CONNECTOR, DESIGNED TO TERMINATE FPC/FFC AND COPE WITH AUTOMATIC MOUNTING (SMT).
- SEE PART DRAWINGS FOR DIMENSIONS A.B.C.
- PLEASE CONSULT US IN CASE OF USING PARTS WITH * MARK

mat'l. code				surface 58 / tolerance ISO 1302 / ISO 406 / ISO 1101		projection		product family 58SF		CODE JP	
ltr	ecn no	dr	date	tolerances unless otherwise specified		mm		title			
A	J05-0457	H.T	2005-7-19	angles linear		scale X		CAT. NO. TABLE FOR 1mm SPACING SMT CONNECTOR (CAT.No.SFW__S-2ST_A_LF)			
B	J05-0547	H.T	2005-8-30					dwg no sheet 1 of 1 size JSA 96624 A4 type Product Customer Drawing			
C	J06-0430	H.T	2006-10-19								
D	J07-0407	H.T	2007-8-9								
sheet index				revision D		FCI		Rev D			
sheet 1											

SC-SFWS 05 JSA96625 96626 96627 96628 96629
form: A4



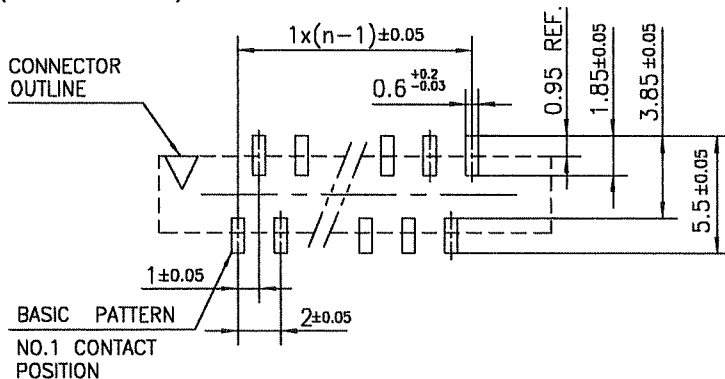
PT. NO.	PARTS NAME	MATERIAL	Q'TY	NOTE
1	HOUSING	GLASS FILLED THERMOPLASTIC RATED. (UL94V-0)	1	COLOR : BROWN
2	SLIDER	PHOSPHOR BRONZE	1	COLOR : BLACK
3	CONTACT	PHOSPHOR BRONZE	n	PLATING : GOLD PLATING

n : NO. OF CONTACTS

NOTES

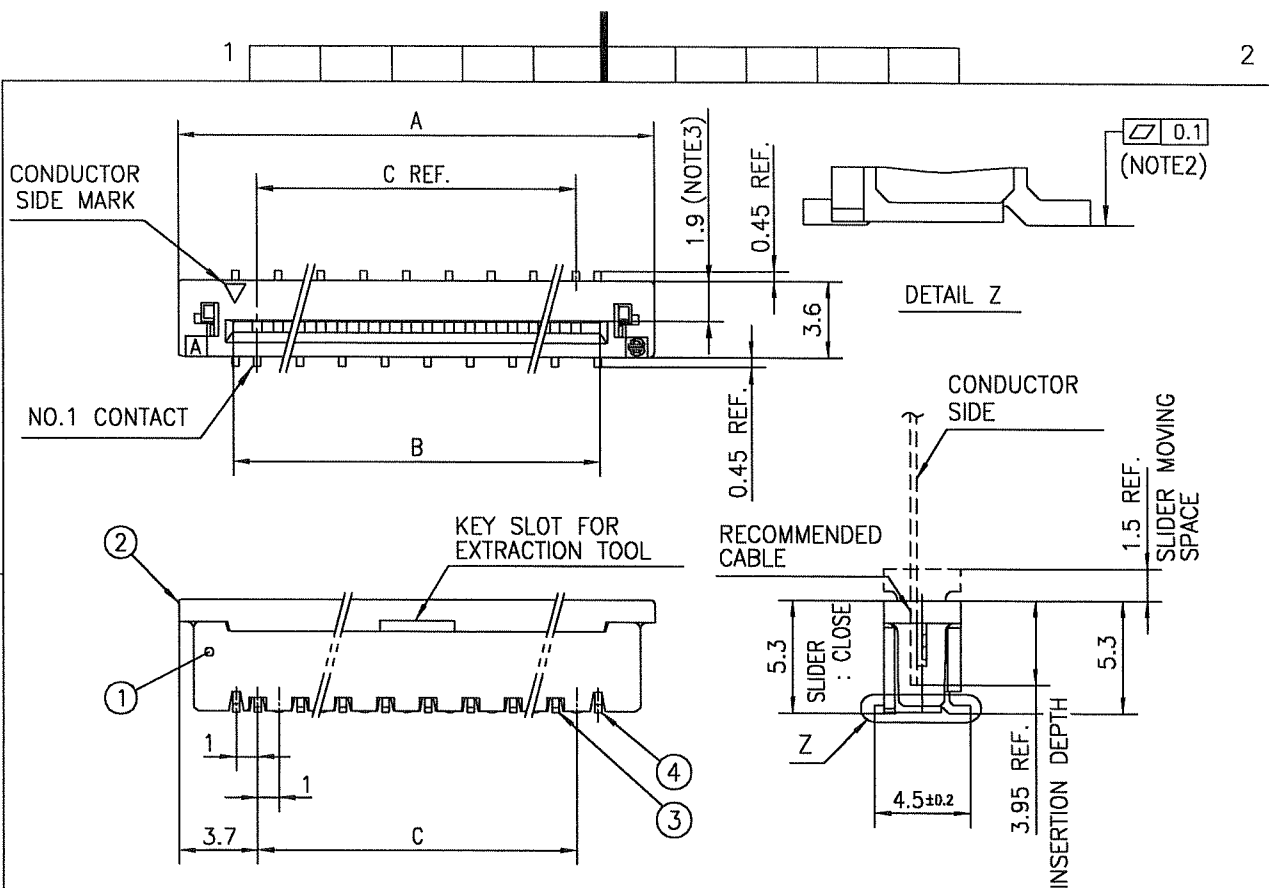
1. THIS PRODUCT IS THE CONNECTOR DESIGNED TO TERMINATE FPC/FFC AND COPE WITH AUTOMATIC MOUNTING (SMT).
2. FLATNESS OF CONTACT TERMINAL MUST BE WITHIN TOLERANCE IN Z PORTION DETAILED DRAWING.
3. THIS DIMENSION IS SPACE FOR THE NOZZLE OF MOUNTER.
4. THIS PRODUCT MEETS EUROPEAN UNION DIRECTIVES AND OTHER COUNTRY REGULATIONS AS DESCRIBED IN GS-22-008
5. THE HOUSING WILL WITHSTAND EXPOSURE TO 260°C PEAK TEMPERATURE FOR 10 SECONDS IN A REFLOW SOLDERING OVEN.

RECOMMENDED PC BOARD LAYOUT (COMPONENT SIDE)



mat'l. code				surface 58 / tolerance ISO 1302 / ISO 406 / ISO 1101		projection		product family 58SF		CODE JP	
ltr	ecn no	dr	date	tolerances unless otherwise specified		mm		title 1mm SPACING SURFACE MOUNT FPC/FFC CONNECTOR (CAT.No.SFW__S-2STA_LF)			
A	J05-0457	H.T	7/19/05	angles	linear ±0.2						
B	J05-0731	H.T	10/28/05					dwg no sheet 1 of 1 size A4			
C	J06-0430	H.T	10/19/06								
				dr	10/19/06	FCI		type Product Customer Drawing			
				enr	10/19/06						
				chr	10/19/06						
				app	10/20/06						
sheet index		revision sheet 1								Rev. C	

SC-SFWS 05 JSA96624
form: A4



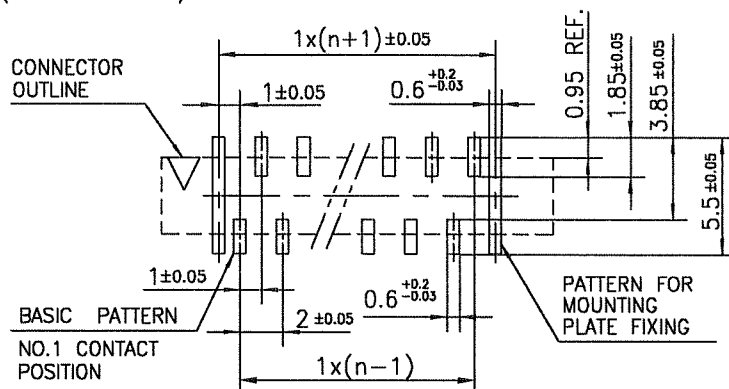
PT. NO.	PARTS NAME	MATERIAL	Q'TY	NOTE
1	HOUSING	GLASS FILLED THERMOPLASTIC RATED. (UL94V-0)	1	COLOR : BROWN
2	SLIDER		1	COLOR : BLACK
3	CONTACT	PHOSPHOR BRONZE	n	PLATING : GOLD PLATING
4	MOUNTING PLATE	BRASS	2	PLATING : Sn Ni UNDER PLATED

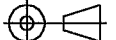
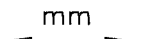

n : NO. OF CONTACTS

NOTES

1. THIS PRODUCT IS THE CONNECTOR DESIGNED TO TERMINATE FPC/FFC AND COPE WITH AUTOMATIC MOUNTING (SMT).
2. FLATNESS OF CONTACT TERMINAL AND MOUNTING PLATE MUST BE WITHIN TOLERANCE IN Z PORTION DETAILED DRAWING.
3. THIS DIMENSION IS SPACE FOR THE NOZZLE OF MOUNTER.
4. THIS PRODUCT MEETS EUROPEAN UNION DIRECTIVES AND OTHER COUNTRY REGULATIONS AS DESCRIBED IN GS-22-008
5. THE HOUSING WILL WITHSTAND EXPOSURE TO 260°C PEAK TEMPERATURE FOR 10 SECONDS IN A REFLOW SOLDERING OVEN.

RECOMMENDED PC BOARD LAYOUT (COMPONENT SIDE)



mat'l. code				surface 58 <input checked="" type="checkbox"/> tolerance ISO 406 ISO 1101		projection 	product family 58SF		CODE JP	
ltr	ecn no	dr	date	tolerances unless otherwise specified				title 1mm SPACING SURFACE MOUNT FPC/FFC CONNECTOR (CAT.No.SFW__S-2STMA__LF)		
A	J05-0457	H.T	7/19/05	angles	linear ±0.2	scale \times				
B	J05-0731	H.T	10/28/05		linear					
C	J06-0430	H.T	10/19/06				dwg no		sheet 1 of 1	size
				dr	<i>H. S. Hough</i>	<i>10/19/06</i>			JSA 96626 A4	
				enr	<i>H. S. Hough</i>	<i>10/19/06</i>				
				chr	<i>H. S. Hough</i>	<i>10/19/06</i>				
				appd	<i>S. S. Hough</i>	<i>10/20/06</i>	type Product Customer Drawing			
sheet index	revision sheet	C	1							Rev C

SC-SFWS 05 JSA96624
form: A4

CAT. NO. & DIMENSIONS

(NOTE4)	NO. OF CONTACTS (n)	CAT. NO. (NOTE2)	DIMENSIONS (NOTE3)		
			D ± 5	E ± 0.3	F ± 0.1
	4	SFW4S-2ST_AE1LF	28.4	24	—
	5	SFW5S-2ST_AE1LF	28.4	24	—
	6	SFW6S-2ST_AE1LF	28.4	24	—
*	7	SFW7S-2ST_AE1LF	28.4	24	—
	8	SFW8S-2ST_AE1LF	28.4	24	—
*	9	SFW9S-2ST_AE1LF	28.4	24	—
	10	SFW10S-2ST_AE1LF	28.4	24	—
	11	SFW11S-2ST_AE1LF	28.4	24	—
*	12	SFW12S-2ST_AE1LF	36.4	32	28.4
	13	SFW13S-2ST_AE1LF	36.4	32	28.4
	14	SFW14S-2ST_AE1LF	36.4	32	28.4
	15	SFW15S-2ST_AE1LF	36.4	32	28.4
	16	SFW16S-2ST_AE1LF	48.4	44	40.4
	17	SFW17S-2ST_AE1LF	48.4	44	40.4
*	18	SFW18S-2ST_AE1LF	48.4	44	40.4
*	19	SFW19S-2ST_AE1LF	48.4	44	40.4
	20	SFW20S-2ST_AE1LF	48.4	44	40.4
*	21	SFW21S-2ST_AE1LF	48.4	44	40.4
	22	SFW22S-2ST_AE1LF	48.4	44	40.4
	23	SFW23S-2ST_AE1LF	48.4	44	40.4
	24	SFW24S-2ST_AE1LF	48.4	44	40.4
*	25	SFW25S-2ST_AE1LF	48.4	44	40.4
	26	SFW26S-2ST_AE1LF	48.4	44	40.4
*	27	SFW27S-2ST_AE1LF	60.4	56	52.4
	28	SFW28S-2ST_AE1LF	60.4	56	52.4
	29	SFW29S-2ST_AE1LF	60.4	56	52.4
	30	SFW30S-2ST_AE1LF	60.4	56	52.4
*	31	SFW31S-2ST_AE1LF	60.4	56	52.4
*	32	SFW32S-2ST_AE1LF	60.4	56	52.4

CAT. NO. SFW (n) S - 2 ST_ A _ _ LF

SERIES

NO. OF CONTACTS

STRAIGHT TYPE

FOR FPC / FFC

VARIATION

STM:FOR AUTOMATIC MOUNTING (SMT)
WITH MOUNTING PLATE

ST:FOR AUTOMATIC MOUNTING (SMT)
WITHOUT MOUNTING PLATE

GOLD PLATING

PACKAGE STYLE

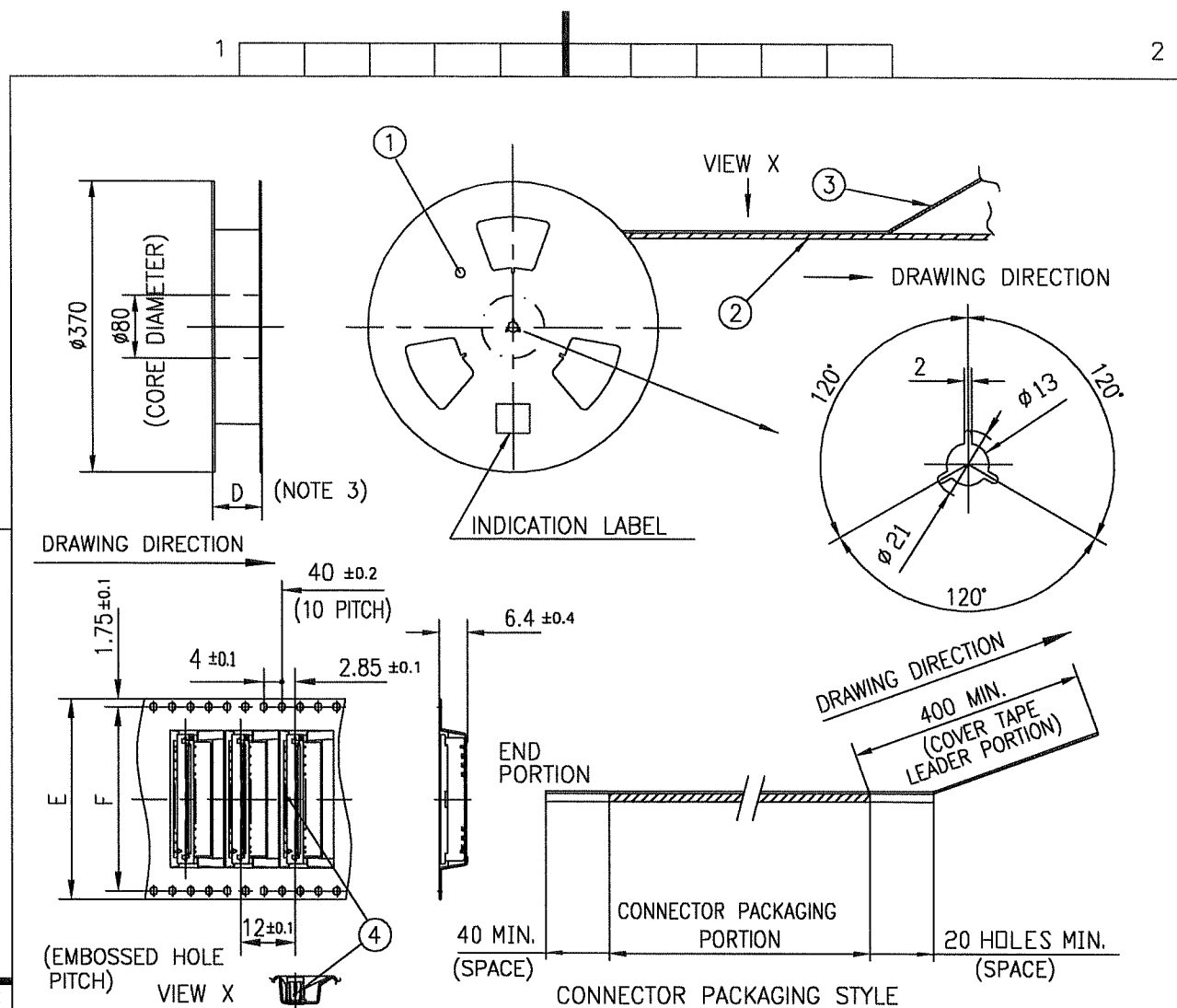
LEAD FREE

NOTES

1. THIS PRODUCT IS THE CONNECTOR DESIGNED TO TERMINATE FPC/FFC AND COTES WITH AUTOMATIC MOUNTING (SMT).
2. THIS CATALOG NO. INDICATES PLASTIC TAPE PACKAGED CONNECTOR.
3. SEE PART DRAWINGS FOR DIMENSIONS D~F.
4. PLEASE CONSULT US IN CASE OF USING PARTS WITH * MARK.

mat'l. code				surface 58 / tolerance ISO 406		projection		product family 58SF		CODE JP	
ISO 1302				ISO 1101		mm		title			
tolerances unless otherwise specified				angles		linear		CAT NO. TABLE FOR PLASTIC TAPE PACKAGED 1mm SPACING SMT CONN. (CAT.No.SFW__S-2ST_AE1LF)			
litr ecn no dr date				scale		X		dwg no sheet 1 of 1 size			
A J05-0457 H.T 2005-7-19				mm		FCI		JSA 96627 A4			
B J05-0547 H.T 2005-8-30								type Product Customer Drawing			
C J06-0430 H.T 2006-10-19											
D J07-0407 H.T 2007-8-9											
sheet index				revision		D		Rev. D			
sheet				1							

SC-SFWS 05 JSA96624
form: A4



PT. NO.	PARTS NAME	CAT. NO.	MATERIAL	Q'TY	NOTE
1	REEL	_____	CARDBOARD	1	COLOR:GRAY
2	PLASTIC (EMBOSSD) TAPE	_____	PET	_____	COLOR:TRANSPARENCY
3	COVER	_____	POLYESTER	_____	COLOR:TRANSPARENCY
4	CONNECTOR	SFW__S-2ST_A_LF	SEE ATTACHED DWG.	1000	_____

NOTES

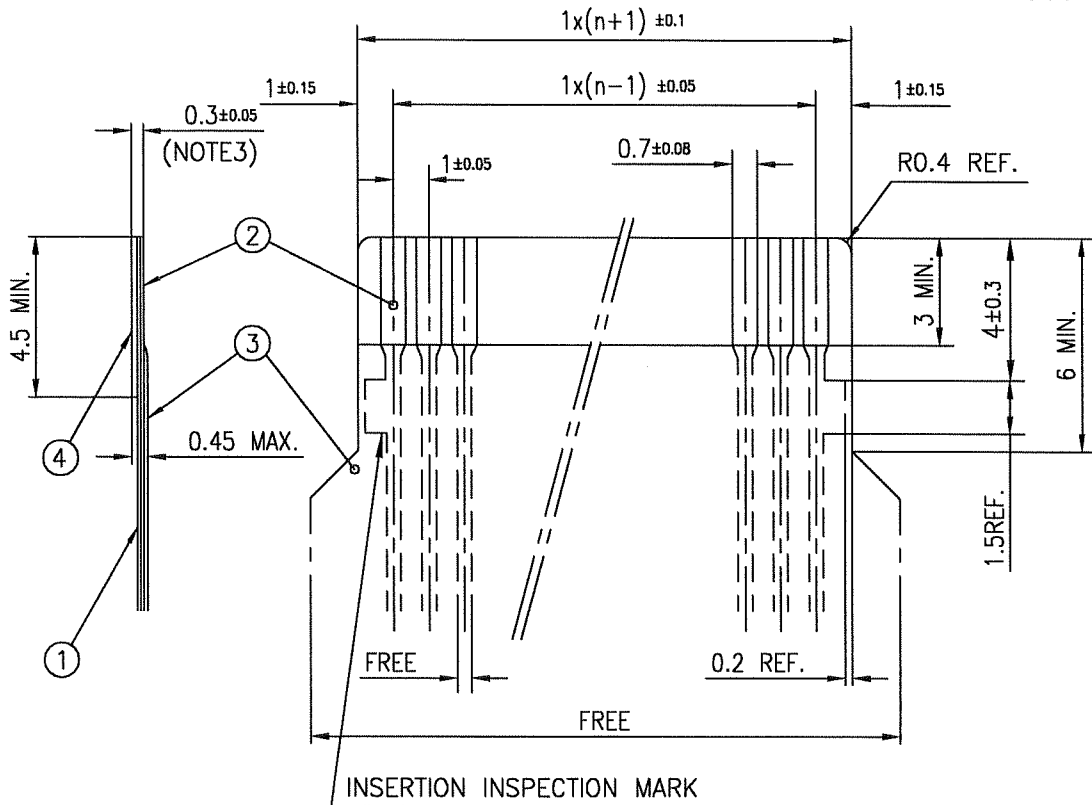
- THIS IS PLASTIC TAPE PACKAGED CONNECTOR USED FOR FPC/FFC AND CYPES WITH AUTOMATIC MOUNTING (SMT).
- SEE JIS C 0806 (PACKING OF ELECTRONIC COMPONENTS ON CONTINUOUS TAPES (SURFACE MOUNTING DEVICES)) FOR SHAPE AND DIMENSIONS OF PLASTIC (EMBOSSD) TAPE AND REEL.
- F DIMENSION IS PORTION OF THE CORE.

mat'l. code				surface 58 / tolerance ISO 1302 / ISO 406 / ISO 1101	projection	product family 58SF	CODE JP
ltr	ecn no	dr	date	tolerances unless otherwise specified		title PLASTIC TAPE PACKAGED 1mm SPACING SMT CONNECTOR (CATA.No.SFW__S-2ST_AE1LF)	
A	J05-0457	H.T	7/19/05	angles linear ±5	mm		
B	J06-0430	H.T	10/19/06	±5'	scale X		
				dr 10/19/06		dwg no	sheet 1 of 1 size
				engr 10/19/06		JSA 96628	A4
				chr 10/19/06		type Product Customer Drawing	
				appd 10/20/06			
sheet index	revision	B					Rev B
	sheet	1					

SC-SFWS 05 JSA96624
form: A4

RECOMMENDED CABLE (FPC)

n : NO. OF CONDUCTORS



PT. NO.	DESCRIPTION	MATERIAL	THICKNESS (μm)
1	BASE FILM	POLYIMIDE OR POLYESTER OR EQUIVALENT	25
2	CONDUCTOR	COPPER FOIL(GOLD PLATING)	35
3	OVERLAY	POLYIMIDE OR POLYESTER OR EQUIVALENT	—
4	SUPPORTING TAPE	POLYESTER OR POLYIMIDE OR EQUIVALENT	188

NOTES

1. NO BURR AT EACH PORTION.
2. NO PEELING IN COMMON USE.
3. TOTAL THICKNESS LIMIT OF EACH MATERIAL (INCLUDING ADHESIVE AGENT) IS SPECIFIED.

mat'l. code				surface 58 / tolerance ISO 1302 ✓ ISO 406 ISO 1101		projection		product family 58SF		CODE JP	
ltr	ecn no	dr	date	tolerances unless otherwise specified		mm		title			
A	J05-0457	H.T	7/19/05					RECOMMENDED CABLE			
B	J06-0430	H.T	10/19/06	angles linear		scale X		(CAT.No.SFW__S-2ST__)			
				dr		10/19/06		dwg no		sheet 1 of 1	
				enr		10/19/06		JSA 96629		size A4	
				chr		10/19/06		type		Product Customer Drawing	
				appd		10/19/06					
sheet index		revision sheet B 1								Rev. B	

CAT. NO. & DIMENSIONS

(NOTE4)	NO. OF CONTACTS (n)	CAT. NO. (NOTE2)	DIMENSIONS (NOTE3)		
			D MAX.	E ± 0.3	F ± 0.1
	4	SFW4S-2ST_AE5LF	30.4	24	—
	5	SFW5S-2ST_AE5LF	30.4	24	—
	6	SFW6S-2ST_AE5LF	30.4	24	—
*	7	SFW7S-2ST_AE5LF	30.4	24	—
	8	SFW8S-2ST_AE5LF	30.4	24	—
*	9	SFW9S-2ST_AE5LF	30.4	24	—
	10	SFW10S-2ST_AE5LF	30.4	24	—
	11	SFW11S-2ST_AE5LF	30.4	24	—
*	12	SFW12S-2ST_AE5LF	38.4	32	28.4
	13	SFW13S-2ST_AE5LF	38.4	32	28.4
	14	SFW14S-2ST_AE5LF	38.4	32	28.4
	15	SFW15S-2ST_AE5LF	38.4	32	28.4
	16	SFW16S-2ST_AE5LF	50.4	44	40.4
	17	SFW17S-2ST_AE5LF	50.4	44	40.4
*	18	SFW18S-2ST_AE5LF	50.4	44	40.4
*	19	SFW19S-2ST_AE5LF	50.4	44	40.4
	20	SFW20S-2ST_AE5LF	50.4	44	40.4
*	21	SFW21S-2ST_AE5LF	50.4	44	40.4
	22	SFW22S-2ST_AE5LF	50.4	44	40.4
	23	SFW23S-2ST_AE5LF	50.4	44	40.4
	24	SFW24S-2ST_AE5LF	50.4	44	40.4
*	25	SFW25S-2ST_AE5LF	50.4	44	40.4
	26	SFW26S-2ST_AE5LF	50.4	44	40.4
*	27	SFW27S-2ST_AE5LF	62.4	56	52.4
	28	SFW28S-2ST_AE5LF	62.4	56	52.4
	29	SFW29S-2ST_AE5LF	62.4	56	52.4
	30	SFW30S-2ST_AE5LF	62.4	56	52.4
*	31	SFW31S-2ST_AE5LF	62.4	56	52.4
*	32	SFW32S-2ST_AE5LF	62.4	56	52.4

CAT. NO. SFW (n) S - 2 ST A E5 LF

SERIES

NO. OF CONTACTS

STRAIGHT TYPE

FOR FPC / FFC

VARIATION

STM : FOR AUTOMATIC MOUNTING (SMT)
WITH MOUNTING PLATEST : FOR AUTOMATIC MOUNTING (SMT)
WITHOUT MOUNTING PLATE

GOLD PLATING

PACKAGE STYLE

LEAD FREE

NOTES

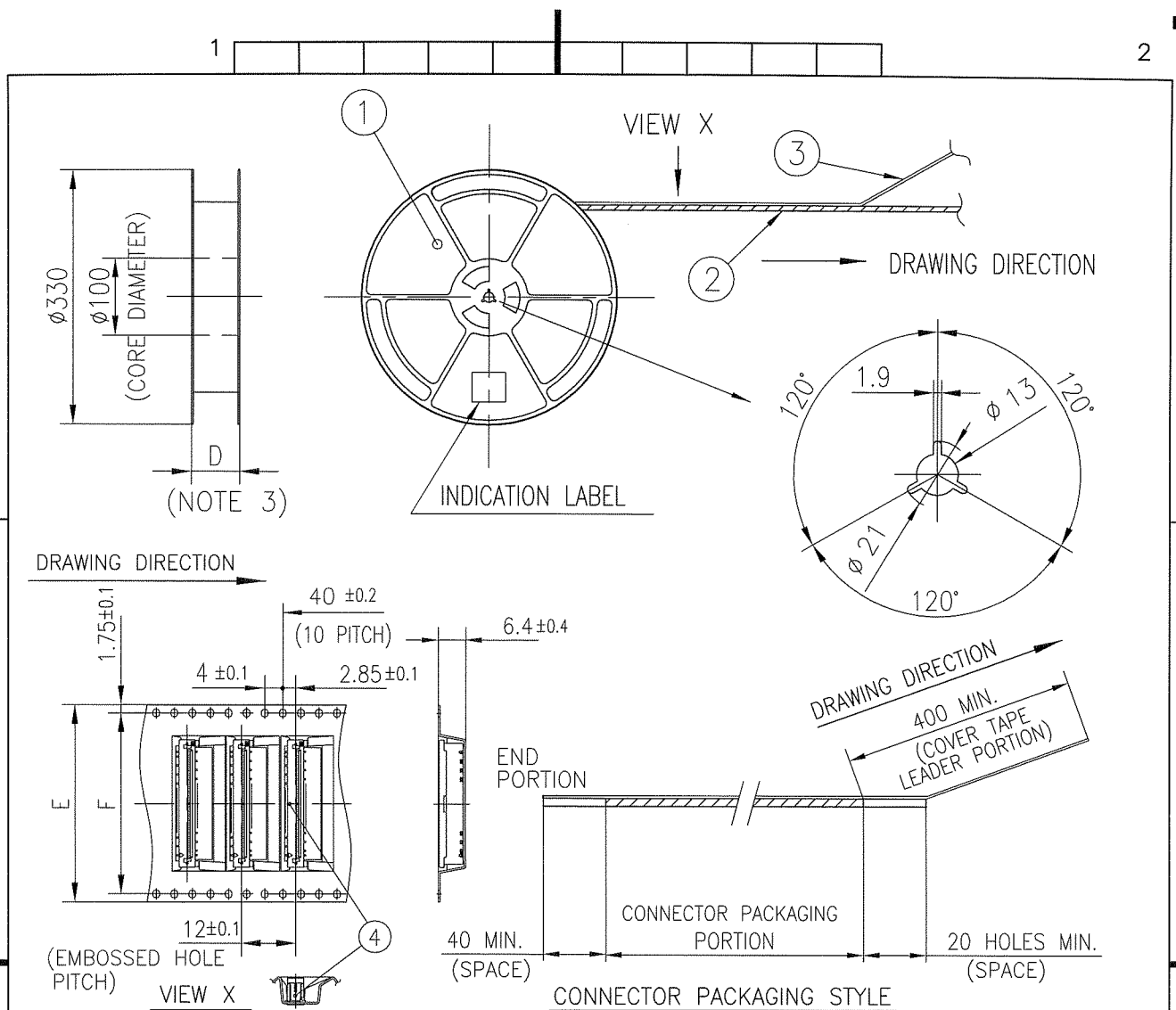
1. THIS PRODUCT IS THE CONNECTOR DESIGNED TO TERMINATE FPC/FFC AND COPE WITH AUTOMATIC MOUNTING (SMT).
2. THIS CATALOG NO. INDICATES PLASTIC TAPE PACKAGED CONNECTOR.
3. SEE PART DRAWINGS FOR DIMENSIONS D~F.
4. PLEASE CONSULT US IN CASE OF USING PARTS WITH * MARK.

mat'l. code				surface <input checked="" type="checkbox"/> ISO 1302 <input type="checkbox"/> tolerance <input checked="" type="checkbox"/> ISO 406 <input type="checkbox"/> ISO 1101		projection		product family 58SF		CODE JP	
ltr	ecn no	dr	date	tolerances unless otherwise specified		mm		title			
A	J08-0338	H.T	2008-8-13	angles	linear	mm		CAT NO. TABLE FOR PLASTIC TAPE PACKAGED 1mm SPACING SMT CONN. (Cat. No. SFW__S-2ST_AE5LF)			
				dr	engr	chr	appd	dwg no		sheet 1 of 1	size
								JSA 97447			A4
sheet index				revision sheet		A		type Product Customer Drawing			
1				1		A		Rev. A			

SC-SFWS05 JSA96624 96625 96626 97448
form: A4

1

2



PT. NO.	PARTS NAME	CAT. NO.	MATERIAL	Q'TY	NOTE
1	REEL	_____	POLYSTYRENE	1	COLOR : WHITE or BLACK
2	PLASTIC (EMBOSSED) TAPE	_____	PET	—	COLOR : TRANSPARENCY
3	COVER	_____	POLYESTER	—	COLOR : TRANSPARENCY
4	CONNECTOR	SFW__S-2ST_ALF	SEE ATTACHED DWG.	900	_____

NOTES

- THIS IS PLASTIC TAPE PACKAGED CONNECTOR USED FOR FPC/FFC AND COPES WITH AUTOMATIC MOUNTING (SMT).
- SEE JIS C 0806 (PACKING OF ELECTRONIC COMPONENTS ON CONTINUOUS TAPES (SURFACE MOUNTING DEVICES)) FOR SHAPE AND DIMENSIONS OF PLASTIC (EMBOSSED) TAPE AND REEL.
- F DIMENSION IS PORTION OF THE CORE.

mat'l. code				surface <input checked="" type="checkbox"/> ISO 1302 <input checked="" type="checkbox"/> tolerance <input checked="" type="checkbox"/> ISO 406 <input checked="" type="checkbox"/> ISO 1101		projection		product family 58SF		CODE JP	
ltr	ecn no	dr	date	tolerances unless otherwise specified		mm		title			
A	J08-0338	H.T	2008-8-13	angles linear		mm		PLASTIC TAPE PACKAGED 1mm SPACING SMT CONNECTOR (Cat. No. SFW__S-2ST_AE5LF)			
				±5°		scale \propto		dwg no sheet 1 of 1 size			
				dr		F01		JSA 97448 A4			
				engr		F01					
				chr		F01					
				appd		F01					
sheet index		revision A						type Product Customer Drawing		Rev. A	

SC-SFWS05 JSA97447
form: A4

Mouser Electronics

Authorized Distributor

Click to View Pricing, Inventory, Delivery & Lifecycle Information:

Amphenol:

[SFW11S-2STE1LF](#) [SFW9S-2STE1LF](#) [SFW4S-2STE1](#) [SFW17S-2STME5LF](#) [SFW18S-2STME5LF](#) [SFW5S-2STE9LF](#) [SFW10S-2STME9LF](#) [SFW14S-2STE9LF](#) [SFW22S-2STE9LF](#) [SFW6S-2STE9LF](#) [SFW22S-2STAE9LF](#) [SFW11S-2STAE1LF](#) [SFW24S-2STMAE1LF](#) [SFW16S-2STME5LF](#) [SFW18S-2STE9LF](#) [SFW6S-2STAE9LF](#) [SFW9S-2STME1LF](#) [SFW7S-2STE1LF](#) [SFW24S-2STAE1LF](#) [SFW18S-2STAE9LF](#) [SFW23S-2STAE1LF](#) [SFW14S-2STAE9LF](#) [SFW4S-2STMAE9LF](#) [SFW12S-2STME5LF](#) [SFW18S-2STAE1LF](#) [SFW30S-2STAE1LF](#)