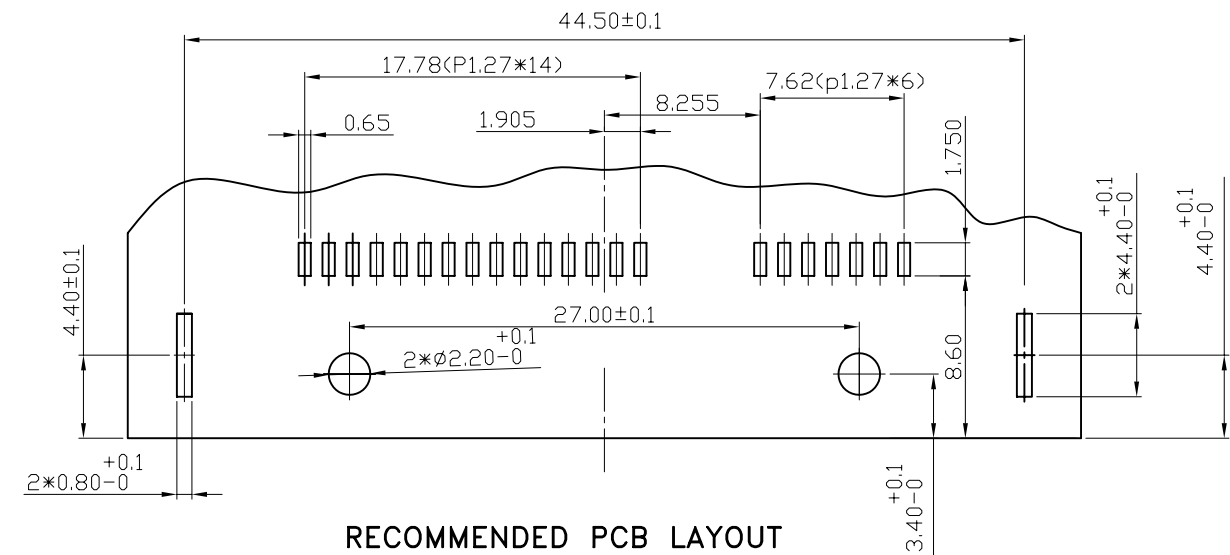
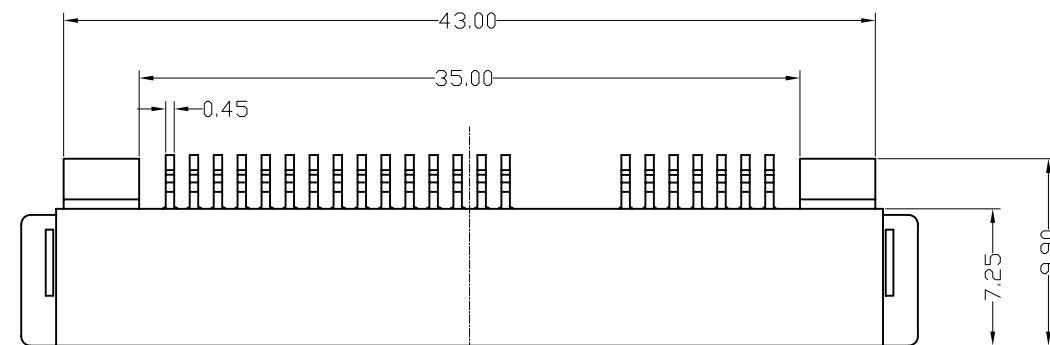


This document is the property of Amphenol Corporation and is delivered on the express condition that it is not to be disclosed, reproduced or used, in whole or in part, for manufacture or sale by anyone other than Amphenol Corporation without its prior consent, & that no right is granted to disclose or to use any information in this document.

Customer Drawing

REVISIONS

SYM	ECN	DESCRIPTION	DATE	APPROVED
B	HK3854	RELEASE TO PRODUCTION	5/18/06	Micheal.IP
C	HK4281	CHANGE THE TOLERANCE TO MEET SATA SPEC	1/29/07	Micheal.IP



RECOMMENDED PCB LAYOUT
(PC BOARD THICKNESS: 1.60mm±0.10)

NOTE:

- MATERIAL:**
HOUSING: HIGH TEMPERATURE THERMOPLASTIC MATERIAL , UL 94 V-0, BLACK;
CONTACTS: COPPER ALLOY T=0.25mm;
CONTACT FINISHED: 1.30-2.54um. NICKEL UNDER PLATED ON ENTIRE CONTACT;
SEE NOTES 4 FOR GOLD PLATING ON MATING AREA;
2.54-5.08um MATTE TIN PLATED ON TAIL AREA;
SOLDER TAB: BRASS, t=0.4±0.05mm;
SOLDER TAB FINISHED: 2.54-5.08um PURE MATTE TIN OVER 1.30um MIN. NICKEL;

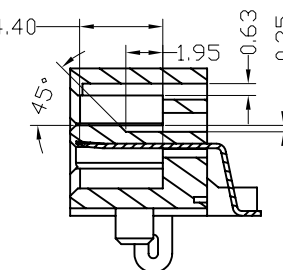
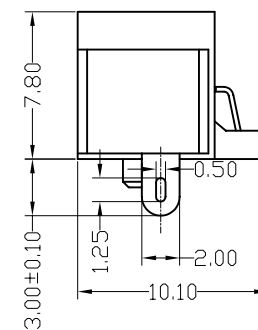
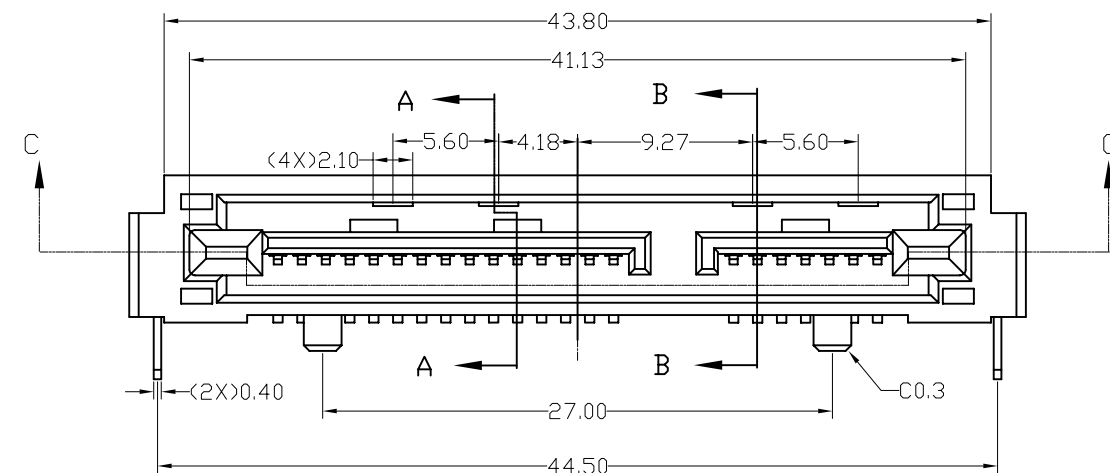
- SPECIFICATIONS:**
RATED CURRENT: SIGNAL PIN 1.5A MIN
POWER PIN 1.5A MIN
DIELECTRIC STRENGTH: 500V FOR 1 MINUTE
INSULATION RESISTANCE: 1x10³ MΩ
TEMPERATURE: -40°C TO +105°C
CONTACT RESISTANCE: 30mΩ MAX

- PACKAGE: PACKING WITH TRAY.**

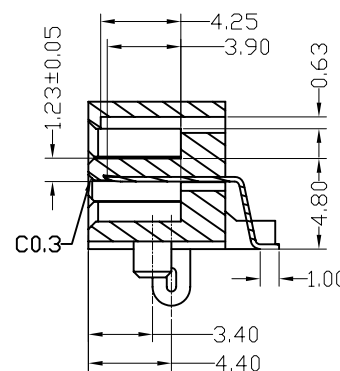
- ORDERING INFORMATION:**

SATA - 001 - 0225 - X

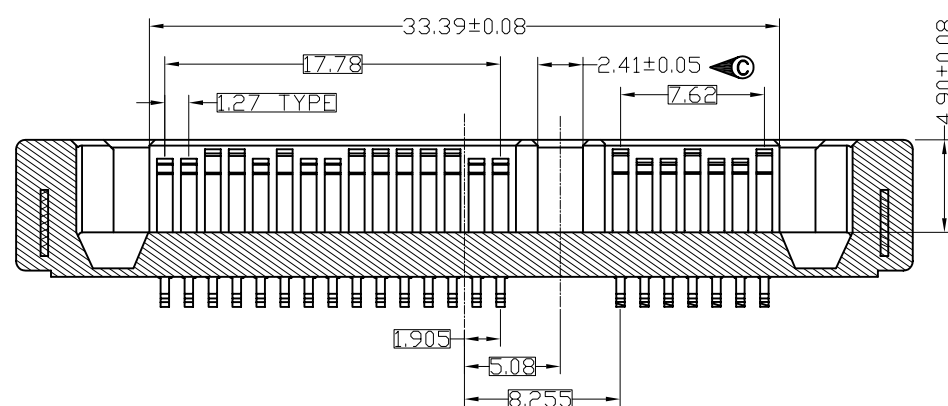
GOLD PLATING ON MATING AREA:
1: 0.76 um MIN.
2: 0.38 um MIN.
3: GOLD FLASH



SECTION A-A



SECTION B-B



SECTION C-C

UNLESS OTHERWISE SPECIFIED TOLERANCES U.S. METRIC .X +/- 0.45 .XX +/- 0.25 .XXX +/- FRACTIONS +/- ANGLES +/- 2° FOR MATERIALS AND FINISHES SEE NOTES		APPROVAL	DATE	Amphenol	
		DRAWN: Maya.Lu	1/29/07		
REMOVE SHARP EDGES		CHECKED: Micheal.IP	1/29/07	TITLE 15+7PIN SATA PLUG,SMT TYPE	
DIMENSIONS		CHECKED			
U.S. INCHES		DRAWING FILE :		SIZE	DRAWING NO.
(METRIC) (MM)		\\DRAWING\\SATA\\C SATA0010225X-C.DWG		A3C	SATA-001-0225-X
		ANGLE OF PROJECTION		SCALE	NONE
				SHEET 1 OF 1	

Mouser Electronics

Authorized Distributor

Click to View Pricing, Inventory, Delivery & Lifecycle Information:

[Amphenol:](#)

[SATA00102253](#) [SATA00102253A](#)