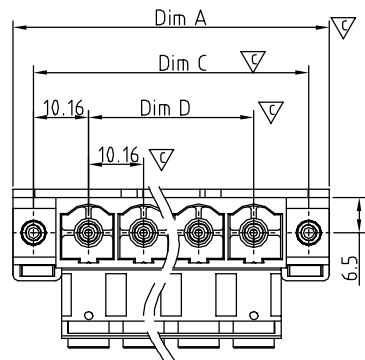


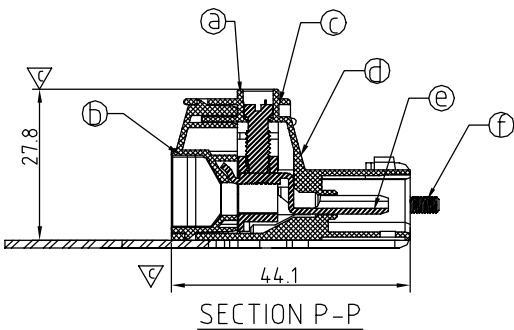
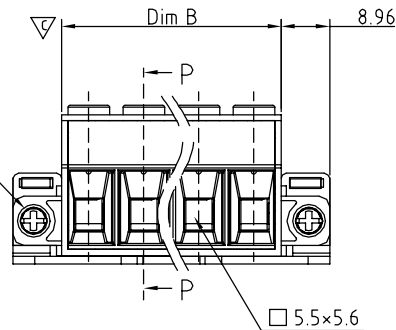
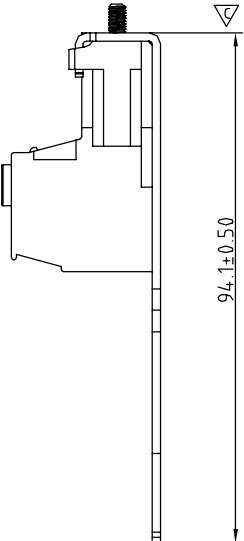
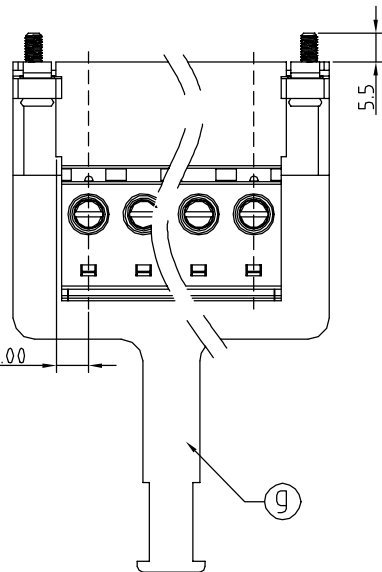
1 2 3 4 5 6 7



N= Number of poles

Dim A	$N \times 10.16 + 17.76$
Dim B	$N \times 10.16 - 0.16$
Dim C	$(N-1) \times 10.16 + 20.32$
Dim D	$(N-1) \times 10.16$

Poles	Tolerance
3P	$\pm 0.25$
4P	



SIGN	DATE	DESCRIPTION	APPROVER
△	2010.06.07	Add cULus standard	Cheng Bo
△	2010.06.07	The flange screw is changed from "-" type to "+/-" type	Cheng Bo
△	2010.06.07	The Voltage rating is changed from 600VAC to 300VAC	Cheng Bo
△	2010.06.07	The material is changed from Brass to Copper	Cheng Bo
△	2011.07.04	Remove the "cULus" mark	Aaron
△	2011.12.15	Screw is changed from M4 to M4.5	Aaron

THIS IS CAD DRAWING, DO NOT REVISE MANUALLY!!!

Material

- Item a Terminal body: Thermoplastic (UL94V-0)
- Item b Terminal cover: Thermoplastic (UL94V-0)
- Item c Terminal screw: Steel Cr3+ Zinc plating "-" slot type
- Item d Clamp: Brass, Ni plated
- △ ● Item e Male contact pin: Copper Gold plated
- △ ● Item f With flange screw: Steel Zinc plating M3 "+/-" slot type
- Item g With flange shaft: Steel Zinc plating

Electrical cULus / IEC

- △ ● Voltage rating: 300VAC / 1000VAC
- Current rating: 55A / 76A
- Solid wire: 6-20 / 0.5-16mm<sup>2</sup>
- Stranded wire: 6-20 / 0.5-16mm<sup>2</sup>
- Torque: 18 Lb-In / 2.0 N.m
- △ ● Screw: M4.5
- Wire strip length: 13-14mm
- Withstanding Voltage: 1.6KV / 8KV
- Operating temperature: -40°C to +115°C
- △ △ ● Safety Approval:
- Critical dimension: ▽

PART NO. KK xx 61 x 2 xxxx G

No. OF POLES			G: Pb<40000ppm
03 3 CONTACTS	Color	0000: "@" Logo (Standard)	
04 4 CONTACTS	0 Black (RAL9005)	000A: "ANYTEK" Mark	
	2 Red (RAL3001/D)	Any special item by	
	3 Orange (RAL2011/P)	customer request.	
	4 Yellow (RAL1018/A)	please contact sales	
	5 Green (RAL6018/T)	department.	
	6 Blue (RAL5015/A)		
	8 Grey (RAL7035/D)		

ANYTEK

CUSTOMER COPY

ALL RIGHTS RESERVED. REPRODUCTION OR ISSUE TO THIRD PARTIES IN ANY FORM WHATEVER IS NOT PERMITTED WITHOUT WRITTEN AUTHORITY FROM THE PROPRIETOR. PROPERTY OF ANYTEK TECHNOLOGY CO., LTD

TITLE	KK 10.16 Series 3p-4p Flange with Screw ( with handle )					
PART NO.	KKxx61x2xxxxG			DWG NO.	8KK0003	
APPROVED	CHECKED	DESIGNED	DRAWN	CUST NO.	Tolerance	
		Aaron	Cheng Bo		UNIT: mm	X. ±0.50
		2011.12.15	2010.06.07		SCALE: NONE	X.X ±0.30
					REV.: E	X.XX ±0.10
SHEET: 01/01				REV.: E		

1 2 3 4 5 6 7

# Mouser Electronics

Authorized Distributor

Click to View Pricing, Inventory, Delivery & Lifecycle Information:

[Amphenol:](#)

[KK0361520000G](#) [KK0461520000G](#)