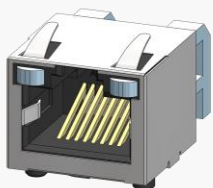


About Amphenol Commercial Products

Amphenol's commercial connector products are used in a variety of end user applications including networking, telecom, server & computer, storage & HDD, consumer electronics and entertainment, professional audio & Industrial & Military/Aerospace.

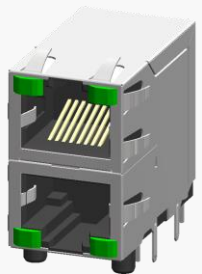
Related Products

RJSSE

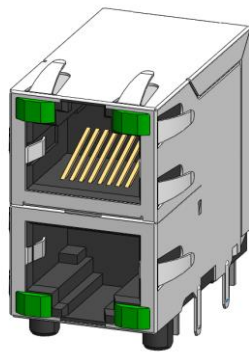


P/N RJSE-5081 SHOWN
SINGLE PORT, 8 POSITION, WITH
SHIELD AND LIGHT PIPE

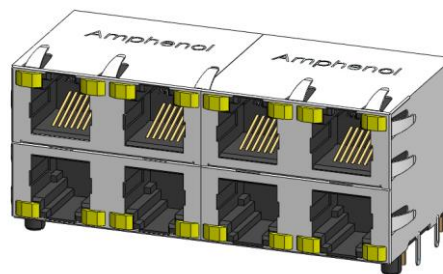
RJSAE



P/N RJSAE-5385-02 SHOWN
STACKED 2X1, 8 POSITION, WITH
SHIELD AND LEDs



P/N RJSAE-5385-02 SHOWN
STACKED 2X1, 8 POSITION, WITH
SHIELD AND LEDs



P/N RJSAE-7366-08X SHOWN
STACKED 2X4, 6 POSITIONS, WITH
SHIELD AND LEDs

OVERVIEW

This product specification defines the general use and performance parameters for Amphenol's RJSAE series of stackable modular jacks.

Availability: 2x1, 2x2 and 2x4 ports available with a wide variety of LED and shielding options.

USAGE

The RJSAE stackable modular jacks supports Ethernet Protocols. Shielding available with and without a Ferrite filter for increased EMI performance and LEDs for Link Activity and Network Speed verification.

APPLICATIONS

Intended for use in applications such as:

Data

- Storage
- Servers
- Routers
- Switches
- Hubs

Networking & Telecom

- 5G Wireless
- Telephones
- Modems
- Fax Machines

Consumer Goods

- Security Systems
- Set Top Boxes
- Video Game Systems
- PCs, Laptops
- Copiers, Printers

Medical

- Analysis Equipment
- Mass Spectrometers

Industrial and Instrumentation

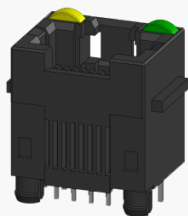
- Uninterruptible Power Supply (UPS)
- ATMs
- Vending Machines
- POS Terminals
- Industrial IoT Platforms

About Amphenol Commercial Products

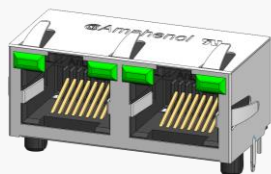
Amphenol's commercial connector products are used in a variety of end user applications including networking, telecom, server & computer, storage & HDD, consumer electronics and entertainment, professional audio & Industrial & Military/Aerospace.

Related Products

RJHSE



P/N RJHSE-3081 SHOWN SINGLE PORT VERTICAL MOUNT, NO SHIELD, WITH LEDs



P/N RJHSE-5385-02 SHOWN TWO PORT REGULAR MOUNT WITH SHIELD AND LEDs

ELECTRICAL CHARACTERISTICS

Contact Resistance	20 mΩ maximum
Insulation Resistance	500 MΩ minimum at 500V DC for 2 minutes maximum
Current Rating	1.5 Amps per contact
Voltage Rating	125 Volts AC
DVV	Contact to Contact is 1000 VAC, 60 Hz, 1 min
LED Forward DC Current	20 mA typical
LED Forward Voltage	1.9 Volts max. @ 2mA (for single colours) 2.6 Volts max. @20mA (for Bi-colours)
LED Reverse Voltage	5 Volts minimum
LED Light Intensity	0.4 to 1.5 mcd @ 2mA (for single colours) 0.5 mcd min. @ 2mA (for Bi-colours)
LED Wavelength	Yellow: 587 ± 7nm measured @20mA Green: 565 ± 56m measured @20mA Red: 625 ± 5nm measured @ 20mA

Supports PoE, PoE+, and PoE++ per IEEE PoE standards
IP20 rated per IEC 60529

MECHANICAL CHARACTERISTICS

Mating Connector Insertion Force	5.0 lbs maximum
Mating Connector Pull Retention Force	20.0 lbs minimum
Durability	750 mating and unmating cycles for 50μ" gold plating
Recommended Soldering Temperature	Wave soldering peaked at 260°C for 5 seconds
Operating Temperature	-40°C to +70°C

UL File #: E135615

About Amphenol Commercial Products

Amphenol's commercial connector products are used in a variety of end user applications including networking, telecom, server & computer, storage & HDD, consumer electronics and entertainment, professional audio & Industrial & Military/Aerospace.

MATERIAL REQUIREMENTS

RJSAE connectors of RoHS compliant.

Unless otherwise specified, the material for each component shall be:

Insulator	Engineering thermoplastic, flammability rating UL 94V-0
Contacts	-Phosphor Bronze hard temper with gold thickness options (6μ", 15μ" 30μ", 50μ") over 50μ" minimum Nickel on contact mating area -100μ" minimum matte Tin plating on soldering tail
Shield	Copper alloy with Nickel on contact mating area
LED	Pure Tin plating on LED tail

AVAILABLE DOCUMENTS

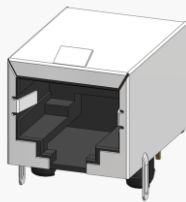
Below is a list of the most popular standard sales drawings:

Contact our website, sales, or an authorized Amphenol representation for additional drawings.

RJSAE-X38X-02X	2X1 Stackable Modular Jack, with LEDs
RJSAE-XF8X-A4X	Stackable Multi-Port, 4 Ports, with LEDs
RJSAE-528X-A8X	4 over 4 ports, shield with top and side tabs, with LEDs

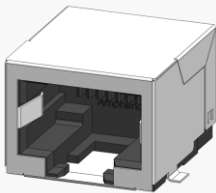
Related Products

FRJAE



P/N FRJAE-418 SHOWN SINGLE PORT, 8 POSITION, WITH FERRITE FILTER AND SHIELD (FRONT TABS)

RJLSE



P/N RJLSE-41181-01 SHOWN SINGLE PORT REGULAR MOUNT, STANDARD SHIELD WITH SMT

Mouser Electronics

Authorized Distributor

Click to View Pricing, Inventory, Delivery & Lifecycle Information:

Amphenol:

[RJSAEGF8008](#) [RJSAEGF8108](#) [RJSAEGF84A8](#) [RJSAEGF8708](#) [RJSAEGF88A8](#) [RJSAEJ38008](#) [RJSAEJ38108](#)
[RJSAEJ381A8](#) [RJSAEJ38508](#) [RJSAEJ38808](#) [RJSAEJ38A08](#) [RJSAEJ38AC8](#)