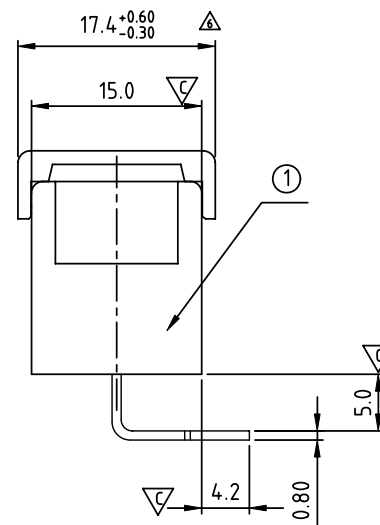
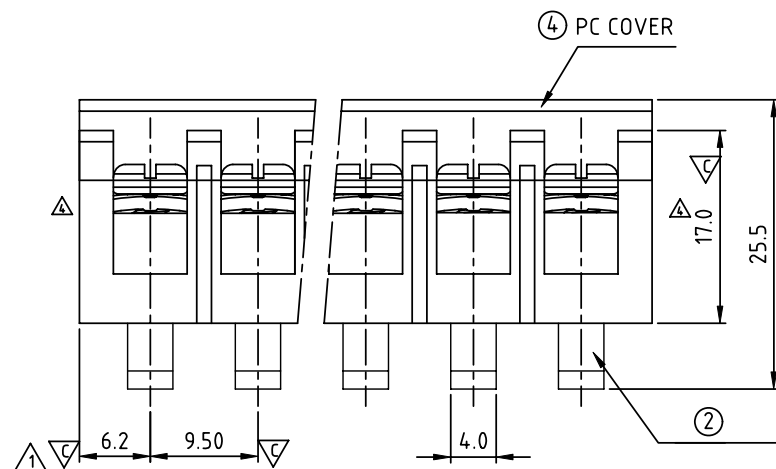


(N=Number of poles)

Dim.L	$N \times 9.5 + 3.0$
Dim.P	$(N-1) \times 9.5$

Poles	Tolerance
4P	± 0.20
5P-10P	± 0.30
11P-24P	± 0.40
25P-30P	± 0.60

△



△

△

APPROVAL: us

Critical dimension:

NO. OF POLES
04: 4 POLES
05: 5 POLES
06: 6 POLES
:
30: 30 POLES

YK 503 xx 2 x x 00G

G:RoHS compliant(lead<4%)
in copper alloy

MARK

0: "@" MAK

1: "ANY" MAK

TERMINAL & SCREW PLATED

0: TERMINAL & SCREW: G/F

△ 1: TERMINAL: G/F, SCREW: Zinc

2: TERMINAL: Sn, SCREW: G/F

△ 3: TERMINAL: Sn, SCREW: Zinc

SIGN	DATE	DESCRIPTION	APPROVER
△	10/05'11	The Dimension 6.2 are added	Chen Bo
△	10/05'11	Temperature changed from -40 °C +115 °C-40 °C to +115 °C	Chen Bo
△	10/27'12	Change the screw plating specification	Jacky
△	06/05'14	change the structure	Guoxue
△	06/05'14	Change the dimensional tolerance	Guoxue
△	08/26'14	The dimensional tolerance is change from 17.4 ± 0.30 to $17.4^{+0.60}_{-0.30}$	Airy min
THIS IS CAD DRAWING, DO NOT REVISE MANUALLY!!!			

MATERIALS ELECTRICAL

RATED VOLTAGE & CURRENT:

300 V, 20 A

WITHSTAND VOLTAGE:

AC 2000 V/Min

INSULATION RESISTANCE:

1000 MΩ OR MORE AT DC 500 V

OPERATING TEMPERATURE RANG:

-40 °C ~ +115 °C

SCREW TORQUE VALUE:

12 Lb-In.

WIRE RANGE:

22 - 12AWG

1) MOLDED PARTS:

POLYIMIDE 66, UL 94 V-0 BLACK

2) TERMINAL:

BRASS, 0.8t

3) TERMINAL SCREWS:

STEEL, M3.5

4) COVER MATERIAL:

PC

APPROVAL: us

Critical dimension:

ANYTEK

CUSTOMER COPY

ALL RIGHTS RESERVED. REPRODUCTION OR ISSUE TO THIRD PARTIES IN ANY FORM WHATEVER IS NOT PERMITTED WITHOUT WRITTEN AUTHORITY FROM THE PROPRIETOR. PROPERTY OF ANYTEK TECHNOLOGY CO., LTD

TITLE		YK-503 W/O Flange & With cover Series (4P-30P)			
PART NO.	YK503xx2xx00G			DWG NO.	8YK0001-503
APPROVED	CHECKED	DESIGNED	DRAWN	CUST NO.	
		Airy min 2014.08.26	Airy min 2014.08.26		
				UNIT: mm	X. ±0.50
				SCALE: NONE	X.X ±0.30
				SHEET: 01/01	X° ±1°
				REV.: F	

Mouser Electronics

Authorized Distributor

Click to View Pricing, Inventory, Delivery & Lifecycle Information:

Amphenol:

<u>YK5030223000G</u>	<u>YK5030323000G</u>	<u>YK5030423000G</u>	<u>YK5030523000G</u>	<u>YK5030623000G</u>	<u>YK5030723000G</u>
<u>YK5030823000G</u>	<u>YK5030923000G</u>	<u>YK5031023000G</u>	<u>YK5031123000G</u>	<u>YK5031223000G</u>	<u>YK5031323000G</u>
<u>YK5031423000G</u>	<u>YK5031523000G</u>	<u>YK5031623000G</u>	<u>YK5031723000G</u>	<u>YK5031823000G</u>	<u>YK5031923000G</u>
<u>YK5032023000G</u>	<u>YK5032123000G</u>	<u>YK5032223000G</u>	<u>YK5032323000G</u>	<u>YK5032423000G</u>	<u>YK5032523000G</u>
<u>YK5032623000G</u>	<u>YK5032723000G</u>	<u>YK5032823000G</u>	<u>YK5032923000G</u>	<u>YK5033023000G</u>	