

SIGN	DATE	DESCRIPTION	APPROVER
△	1/3107	The soldering temperature from 245° to 250°	Aaron
△	05/28'13	change the structure	Da cheng
△	05/28'13	update the drawing	Da cheng
△			
THIS IS CAD DRAWING, DO NOT REVISE MANUALLY!!!			

Material

- Item ① Insulator body: Thermoplastic (UL94V-0)
- Item ② Insulating cover :Thermoplastic (UL94V-0)
- Item ③ Contact pin : Brass,Tin plated
- Item ④ Wire guard: Stainless steel
- Item ⑤ Pad board: Thermoplastic (UL94V-0)

Electrical:

- Voltage rating: 300V
- Current rating: 8A
- Wire range:
- Solid wire(AWG): 12-28
- Stranded wire(AWG): 12-28
- Wire strip length: 8-9mm
- Withstanding Voltage: 16KV
- Operating temperature: -40°C to +115°C
- Safety Approval:
- Critical dimension:

HM XX 40 X 1 XXXX G

No. OF POLES ———→ RoHS compliant (lead<4%) In copper Alloy

01: 1 POLES
02: 2 POLES
16: 16 POLES

△ COLOR
0 Black (RAL9005)
2 Red (RAL3001/D)
3 Orange(RAL2011/P)
4 Yellow(RAL1018/A)
5 Green(RAL6018/T)
6 Blue (RAL5015/A)
8 Grey(RAL7004/P)
9 White(RAL 1102)
C Multiple colors

0000 Standard @ Logo
000A Standard ANY Logo
Any special item by customer request,
please contact sales department.

ANYTEK

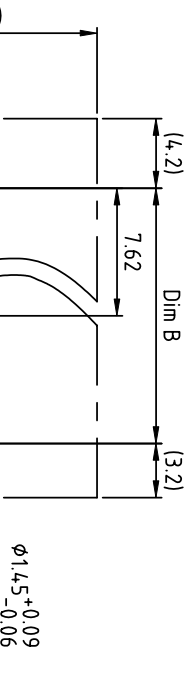
CUSTOMER COPY

ALL RIGHTS RESERVED. REPRODUCTION OR ISSUE TO THIRD PARTIES IN ANY FORM WHATEVER IS NOT PERMITTED WITHOUT WRITTEN AUTHORITY FROM THE PROPRIETOR. PROPERTY OF ANYTEK TECHNOLOGY CO., LTD

TITLE HM 7.62 mm Series press fit type

PART NO. HMxx40x1xxxxG DWG NO. 8HM0104

APPROVED	CHECKED	DESIGNED	DRAWN	CUST NO.	UNIT: mm	Tolerance
		Da cheng	Da cheng		X, X, X, X, X	±0.50 ±0.30 ±0.10
		2013.05.28	2013.05.28		SCALE: NONE	±1°
				SHEET: 01/01	REV.: D	



φ1.45^{+0.09}_{-0.06}

(metal-plated hole)

△ N=NUMBER OF POLES
Dim L (N-1)×7.62+6.58
Dim B (N-1)×7.62

P.C.B LAYOUT
Top view

Mouser Electronics

Authorized Distributor

Click to View Pricing, Inventory, Delivery & Lifecycle Information:

Amphenol:

[HM0240810000G](#) [HM0340810000G](#) [HM0440810000G](#) [HM0540810000G](#) [HM0640810000G](#) [HM0740810000G](#)
[HM0840810000G](#) [HM0940810000G](#) [HM1040810000G](#) [HM1140810000G](#) [HM1240810000G](#) [HM1340810000G](#)
[HM1440810000G](#) [HM1540810000G](#) [HM1640810000G](#)