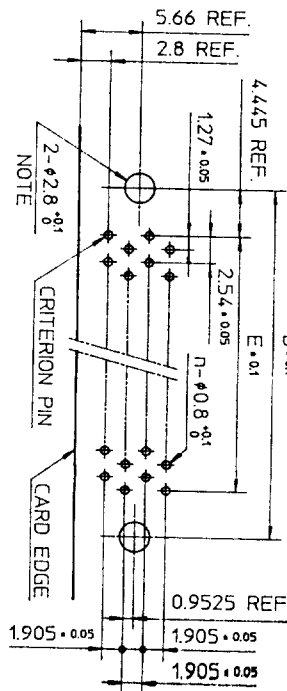


RECOMMENDED PC BOARD
THICKNESS: 1.6 ±0.2
HOLE PATTERN (COMPONENT SIDE)
NO. OF CONTACTS: 40, 60, 68, 80, 100, 120

n : NO. OF CONTACTS



NOTE
THROUGH-HOLES FOR MOUNTING LATCHES ALSO SHOULD
BE PLATED.

TOLERANCES
UNLESS OTHERWISE SPECIFIED: ±0.3

CAT. NO.	NO. OF CONTACTS (MATING SIDE)	DIMENSIONS				
		A	B	C	D	E
PHEC30P-R21	15/ROW X 2 ROWS	32.67	26.67	30.3	20.42	17.78
PHEC34P-R21	17/ROW X 2 ROWS	35.21	29.21	32.84	22.96	20.32
PHEC40P-R21	20/ROW X 2 ROWS	39.02	33.02	36.65	26.77	24.13
PHEC50P-R21	25/ROW X 2 ROWS	45.37	39.37	43	33.12	30.48
PHEC60P-R21	30/ROW X 2 ROWS	51.72	45.72	49.35	39.47	36.83
PHEC68P-R21	34/ROW X 2 ROWS	56.8	50.8	54.43	44.55	41.91
PHEC80P-R21	40/ROW X 2 ROWS	64.42	58.42	62.05	52.17	49.53
PHEC100P-R21	50/ROW X 2 ROWS	77.12	71.12	74.75	64.87	62.23
PHEC120P-R21	60/ROW X 2 ROWS	89.82	83.82	87.45	77.57	74.93

CONTACT PLATING TABLE
(THICKNESS: μm)

CONTACT AREA	REMAINDER
GOLD 0.25 MIN.	SOLDER
OVER NICKEL 32	OVER NICKEL

MATERIAL
BODY : NYLON RESIN GLASS REINFORCED (UL94V-0)
COLOR : BLACK
LOCATOR : PBT RESIN GLASS REINFORCED (UL94V-0)
COLOR : BLACK
CONTACT : COPPER ALLOY
MOUNTING LATCH : PHOSPHOR BRONZE
SCREW NUT : STEEL
NICKEL PLATED

NO. OF CONTACTS: 40, 60, 68, 80, 100, 120
CRITERION PIN

NO. OF CONTACTS: 30, 34, 50

DRAWING NO.
JSC 90736

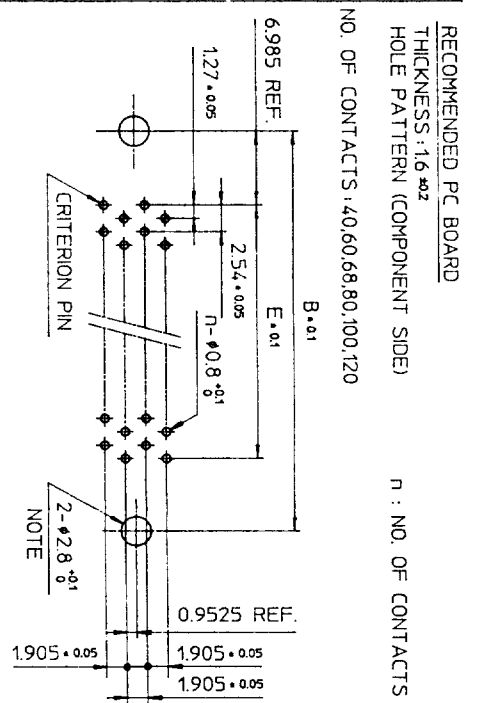
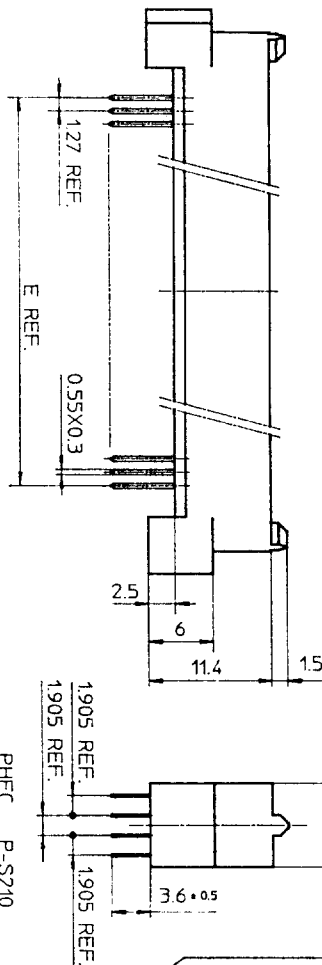
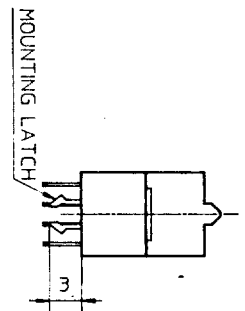
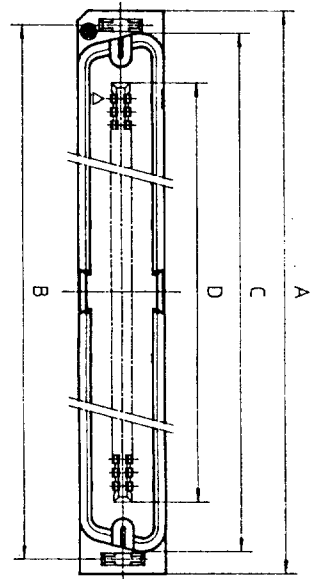
PRINTED CIRCUIT CONNECTOR

CAT. NO.	PHEC___P-R21_
DRAWING NO.	JSC 90736
REV	3
BURNDY JAPAN Ltd.	

DESIGNED	M. Oga
DRAWN	4.86
CHECKED	J. Ogashira
APPROVED	Mar. 8, 1990
DATE	

SCALE	
DIM. IN	mm
MATERIAL	

REV	DATE	DESCRIPTION	CHKD
1	92-8-14	30,34,50,68 POSITIONS ADDED. LOCATOR MATERIAL ADDED.	
2	90-6-7	EC 7866	
3	90-4-20	EC 7837	



TOLERANCES
UNLESS OTHERWISE SPECIFIED: ±0.3

CAT. NO.	NO. OF CONTACTS (MATING SIDE)	DIMENSIONS				
		A	B	C	D	E
PHEC30P-S21	15/ROW X 2 ROWS	34.55	31.75	30.3	20.42	17.78
PHEC34P-S21	17/ROW X 2 ROWS	37.09	34.29	32.84	22.96	20.32
PHEC40P-S21	20/ROW X 2 ROWS	40.9	38.1	36.65	26.77	24.13
PHEC50P-S21	25/ROW X 2 ROWS	47.25	44.45	43	33.12	30.48
PHEC60P-S21	30/ROW X 2 ROWS	53.6	50.8	49.35	39.47	36.83
PHEC68P-S21	34/ROW X 2 ROWS	58.68	55.88	54.43	44.55	41.91
PHEC80P-S21	40/ROW X 2 ROWS	66.3	63.5	62.05	52.17	49.53
PHEC100P-S21	50/ROW X 2 ROWS	79.0	76.2	74.75	64.87	62.23
PHEC120P-S21	60/ROW X 2 ROWS	91.7	88.9	87.45	77.57	74.93

MATERIAL

INSULATOR: NYLON RESIN GLASS REINFORCED (UL94V-0)

COLOR: BLACK

CONTACT: COPPER ALLOY

MOUNTING LATCH: PHOSPHOR BRONZE

SOLDER PLATED

CONTACT PLATING TABLE

[THICKNESS: μm]

CONTACT AREA	REMAINDER
GOLD 0.25 MIN	SOLDER
OVER NICKEL 3Z	OVER NICKEL

PRINTED CIRCUIT CONNECTOR

CAT. NO. PHEC-P-S21

DRAWING NO. JSC 90735

BURNDY
JAPAN, Ltd.

DESIGNED

DRAWN

CHECKED

APPROVED

DATE

M. Oba

4.8/1

J. Toyoshima

Mar. 8, 1990

SCALE

DIM IN

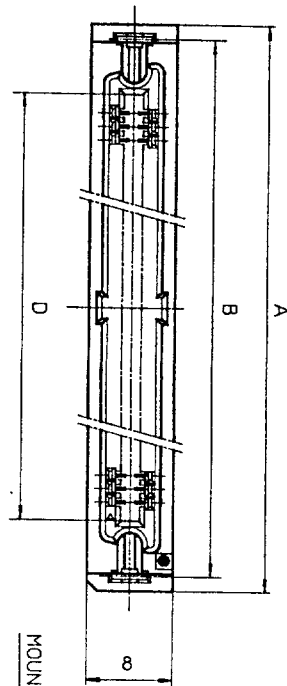
MATERIAL

mm

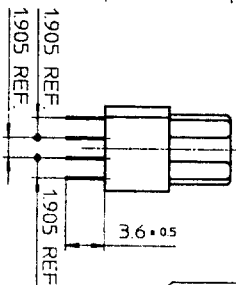
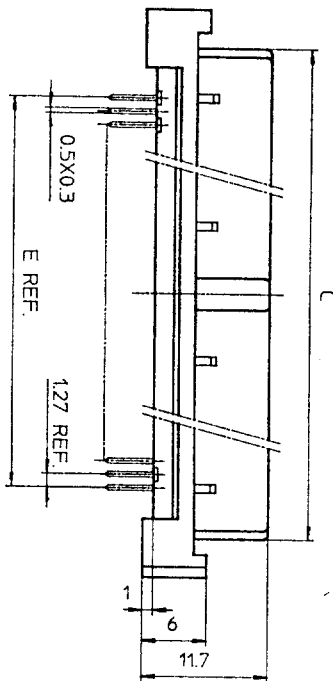
REV	DATE	DESCRIPTION	CHK
1	8-11 '92	30,34,50,68 POSITIONS ADDED.	JSC
2	6-5 '90	EC 7866	JSC
1	4-20 '90	EC 7837	JSC

REFERENCE

10-PHEC 02



PHEC...R-S211



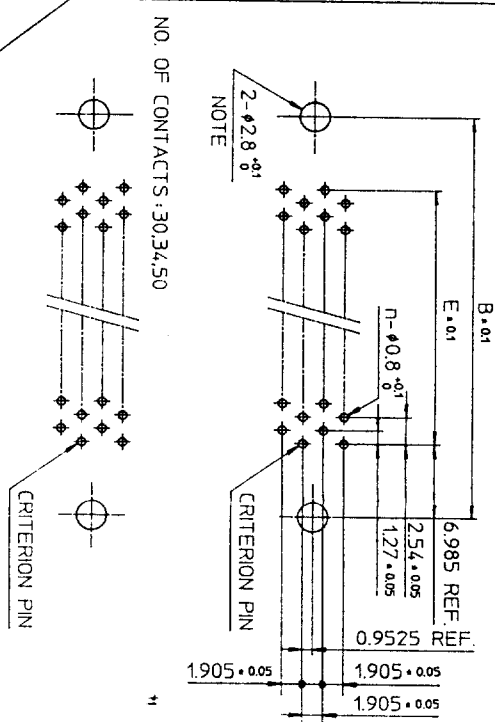
PHEC...R-S210

RECOMMENDED PC BOARD

THICKNESS: 1.6 ± 0.2
HOLE PATTERN (COMPONENT SIDE)

NO. OF CONTACTS: 40, 60, 68, 80, 100, 120

N: NO. OF CONTACTS

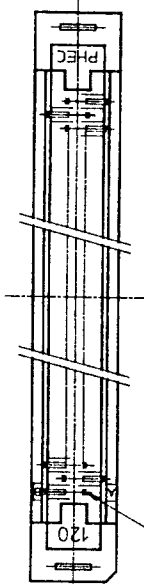


NO. OF CONTACTS: 30, 34, 50

NOTE
THROUGH-HOLES FOR MOUNTING LATCHES ALSO SHOULD
BE PLATED.

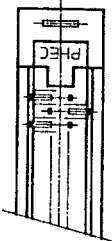
CRITERION PIN

NO. OF CONTACTS: 40, 60, 68, 80, 100, 120



CRITERION PIN

NO. OF CONTACTS: 30, 34, 50



MATERIAL

INSULATOR: PBT RESIN GLASS REINFORCED (UL94V-0)

COLOR: BLACK

CONTACT: PHOSPHOR BRONZE

MOUNTING LATCH: PHOSPHOR BRONZE
SOLDER PLATED

CONTACT PLATING TABLE

(THICKNESS: μm)

CONTACT AREA	REMAINDER
GOLD 0.25 MIN. OVER NICKEL 3.2	SOLDER OVER NICKEL

TOLERANCES
UNLESS OTHERWISE SPECIFIED: ±0.3

CAT. NO.	NO. OF CONTACTS (MATING SIDE)	DIMENSIONS				
		A	B	C	D	E
PHEC30R-S21	15/ROW X 2 ROWS	34.55	31.75	27.26	21.26	17.78
PHEC34R-S21	17/ROW X 2 ROWS	37.09	34.29	29.8	23.8	20.32
PHEC40R-S21	20/ROW X 2 ROWS	40.9	38.1	33.61	27.61	24.13
PHEC50R-S21	25/ROW X 2 ROWS	47.25	44.45	39.96	33.96	30.48
PHEC60R-S21	30/ROW X 2 ROWS	53.6	50.8	46.31	40.31	36.83
PHEC68R-S21	34/ROW X 2 ROWS	58.68	55.88	51.39	45.39	41.91
PHEC80R-S21	40/ROW X 2 ROWS	66.3	63.5	59.01	53.01	49.53
PHEC100R-S21	50/ROW X 2 ROWS	79.0	76.2	71.71	65.71	62.23
PHEC120R-S21	60/ROW X 2 ROWS	91.7	88.9	84.41	78.41	74.93

PRINTED CIRCUIT CONNECTOR

CAT. NO.

PHEC...R-S21

DRAWING NO.

JSC 90737

4

BURNDY
JAPAN, Ltd.

DESIGNED

DRAWN

CHECKED

APPROVED

DATE

Mar. 8, 1990

SCALE

DIM. IN

MATERIAL

mm

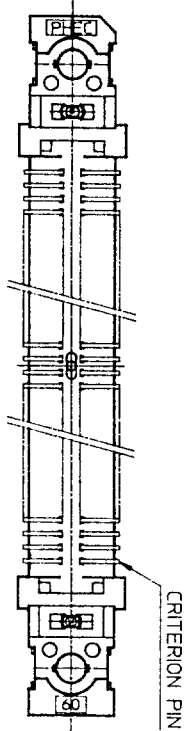
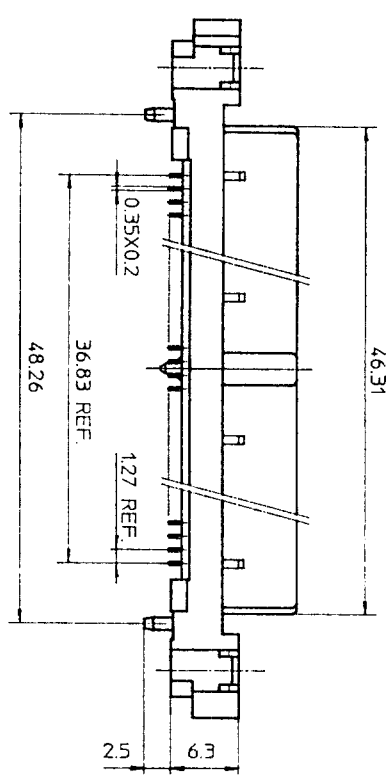
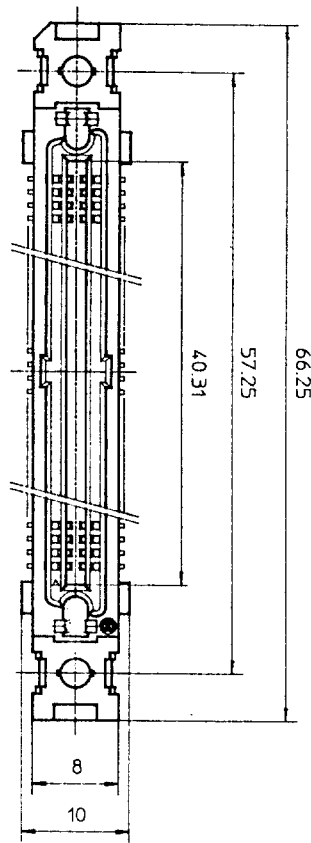
DESCRIPTION

CKD

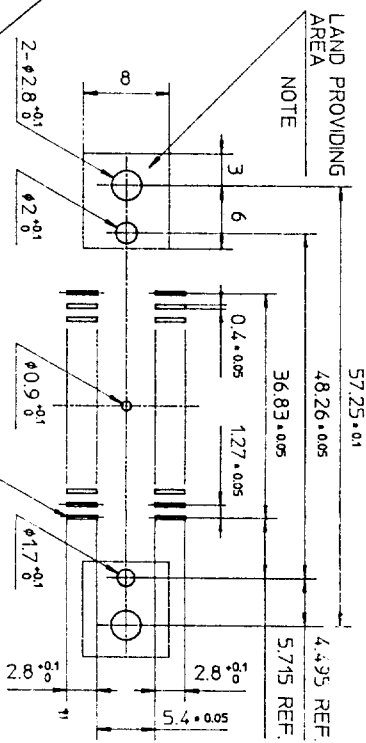
REFERENCE

93	WRONG CONTACT DIM. CORRECTED.
1-29	
92	30,34,50,68 POSITIONS ADDED No. 5.9
3-8-11	
90	EC 7866 No. JK
5-30	
90	EC 7837 No. JK
4-20	

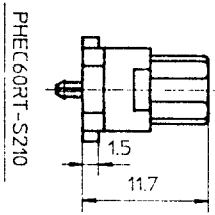
REV. DATE



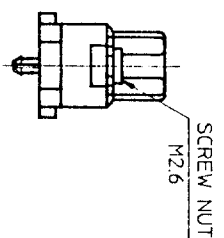
RECOMMENDED PC BOARD
THICKNESS : 1.6 ±0.2
HOLE PATTERN (COMPONENT SIDE)



NOTE
PROVIDE LAND SO THAT FLANGE PORTION OF THE CONNECTOR
CAN BE PUT.



TOLERANCES
UNLESS OTHERWISE SPECIFIED : ±0.3



PHEC60RT-S212

MATERIAL

INSULATOR : PPS RESIN GLASS REINFORCED (UL94V-0)
COLOR : BLACK

CONTACT : PHOSPHOR BRONZE

SCREW NUT : STAINLESS

NO. OF CONTACTS : 30/ROW X 2 ROWS (MATING SIDE)

CONTACT PLATING TABLE

CONTACT AREA		REMAINDER	
GOLD 0.25 MIN.		SOLDER	
OVER NICKEL 32		OVER NICKEL	

PRINTED CIRCUIT CONNECTOR
SURFACE MOUNT TYPE

REV	DATE	DESCRIPTION	CHKD.
4	8-14 '92	WRONG CONTACT DIM. CORRECTED	
3	1-8 '92	100 POSITIONS OF DELETED.	
2	6-8 '90	DIM. CHANGED.	
1	4-20 '90	EC7866	
		VARIATION ADDED.	

SCALE
DIM. IN
MATERIAL

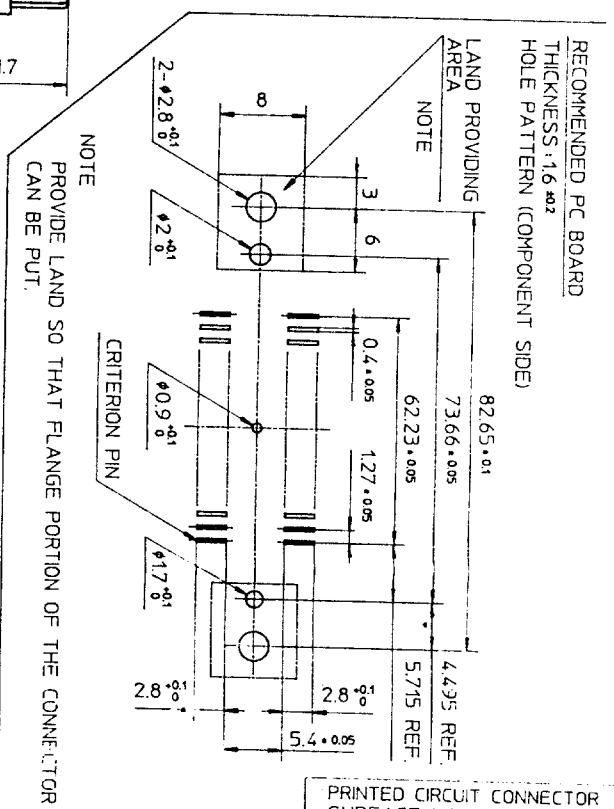
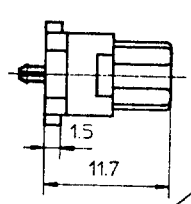
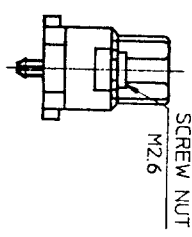
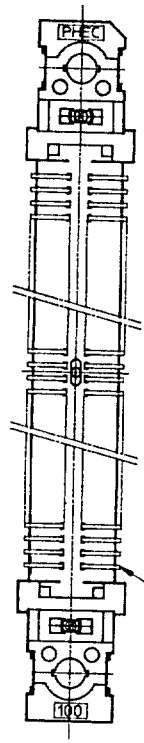
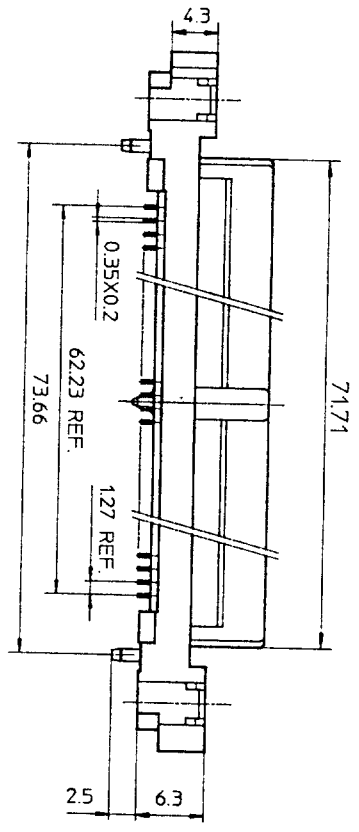
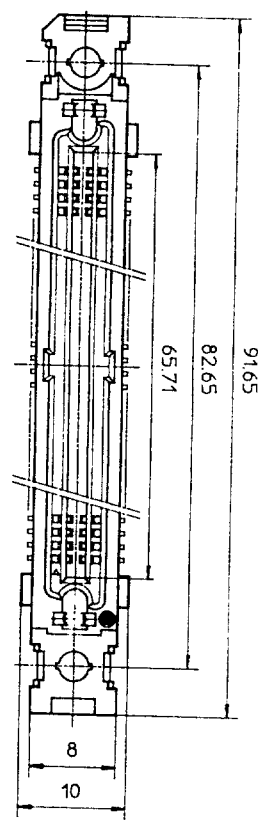
DESIGNED
DRAWN
CHECKED
APPROVED
DATE

CAT. NO. PHEC60RT-S21_

DRAWING NO. JSC 90739

REV 4

BURNDY JAPAN, Ltd.



TOLERANCES
UNLESS OTHERWISE SPECIFIED: ±0.3

MATERIAL

INSULATOR : PPS RESIN GLASS REINFORCED (UL94V-0)
COLOR : BLACK

CONTACT : PHOSPHOR BRONZE

SCREW NUT : STAINLESS

NO. OF CONTACTS : 50/ROW X 2 ROWS (MATING SIDE)

CONTACT PLATING TABLE

[THICKNESS : μm]	
CONTACT AREA	REMAINDER
GOLD 0.25 MIN.	SOLDER
OVER NICKEL 3Z	OVER NICKEL

PRINTED CIRCUIT CONNECTOR
SURFACE MOUNT TYPE

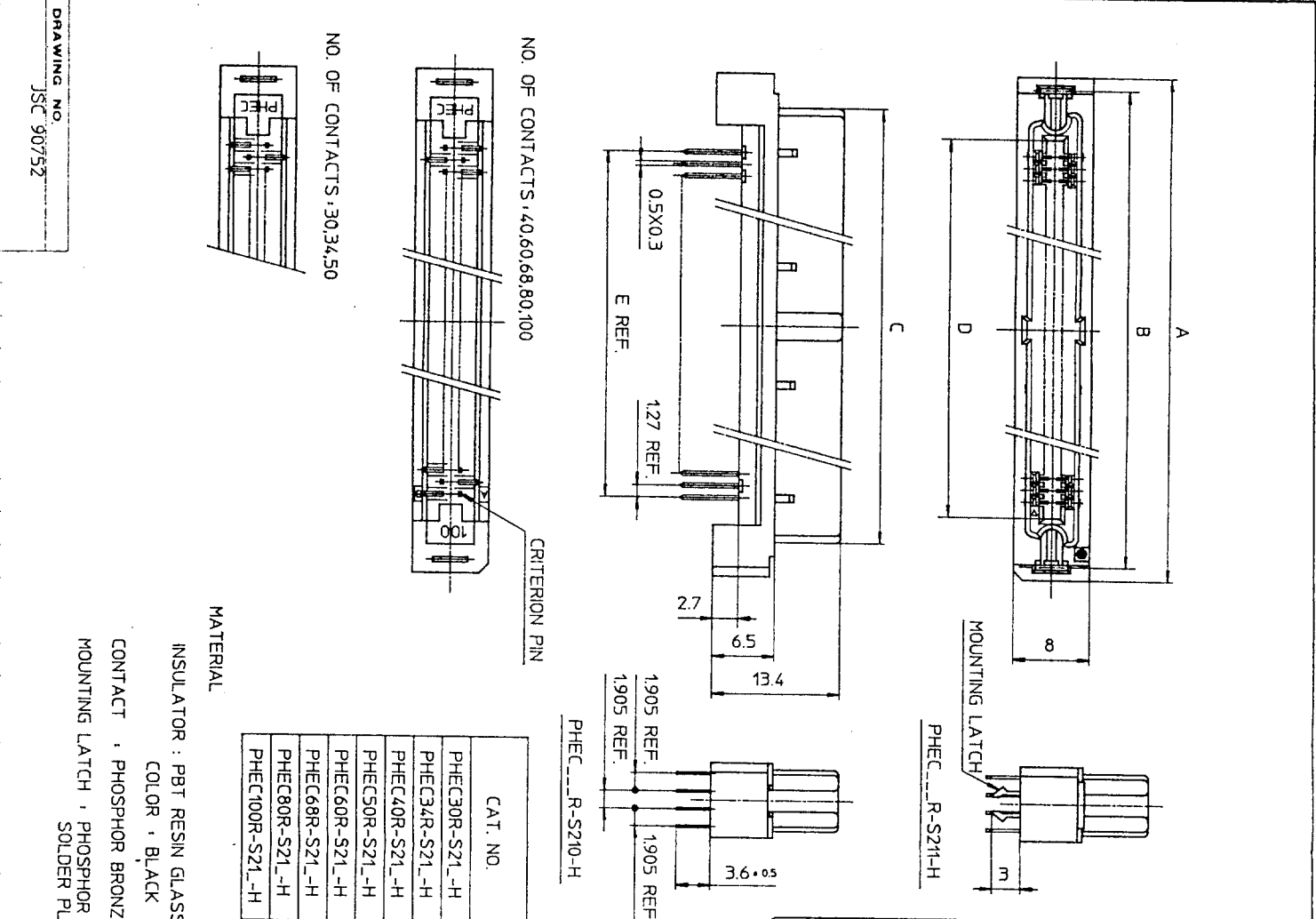
CAT. NO.	PHEC100RT-S21
DRAWING NO.	JSC 91839
REV	0

BURNDY
JAPAN, Ltd.

DESIGNED
DRAWN
CHECKED
APPROVED
DATE Aug. 11, 1992

SCALE
DIM. IN
MATERIAL

REV	DATE	DESCRIPTION	CKD.



RECOMMENDED PC BOARD
THICKNESS: 1.6 ± 0.2
HOLE PATTERN (COMPONENT SIDE)

NO. OF CONTACTS: 40, 60, 68, 80, 100

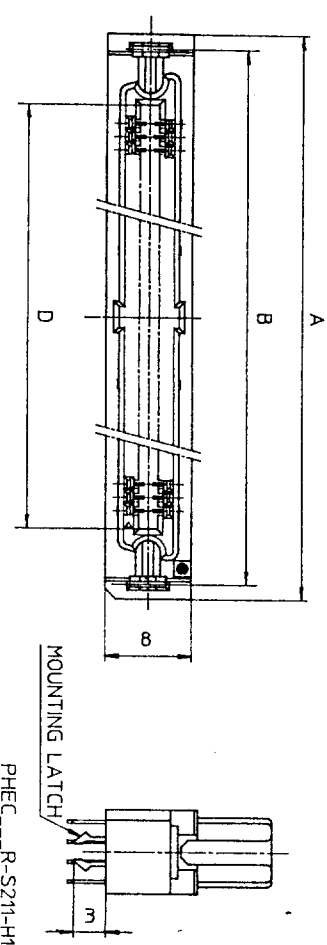
NO. OF CONTACTS: 30, 34, 50

NOTE
THROUGH-HOLES FOR MOUNTING LATCHES ALSO SHOULD BE PLATED.

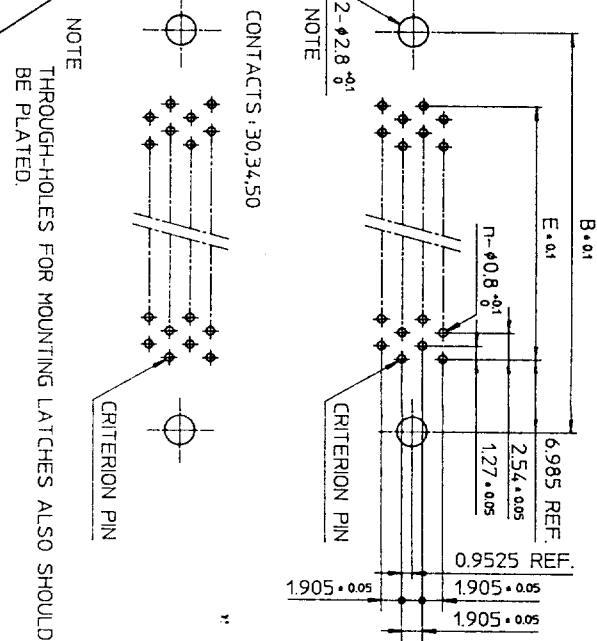
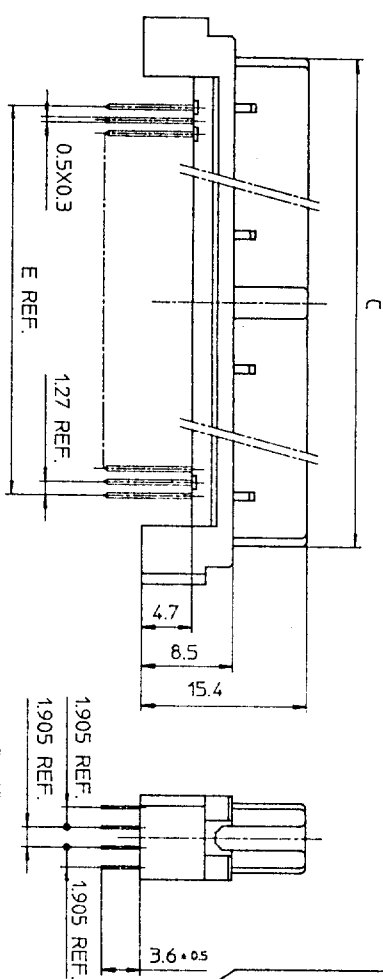
TOLERANCES UNLESS OTHERWISE SPECIFIED: ±0.3			PRINTED CIRCUIT CONNECTOR HIGH STAND OFF TYPE	
CAT. NO.			CAT. NO.	
PHEC30R-S21-H			PHEC_R-S21-H	
DRAWING NO.			DRAWING NO.	
JSC 90752			JSC 90752	
REV			REV	
5			5	
DESCRIPTION			DATE	
Mar. 24, 1990			DATE	
DESIGNED			DESIGNED	
DRAWN			DRAWN	
CHECKED			CHECKED	
APPROVED			APPROVED	
DATE			DATE	
Mar. 24, 1990			Mar. 24, 1990	
SCALE			SCALE	
DIM. IN			DIM. IN	
MATERIAL			MATERIAL	
REFERENCE			REFERENCE	
JSC 90752			JSC 90752	
BURNBY JAPAN, Ltd.			BURNBY JAPAN, Ltd.	

RECOMMENDED PC BOARD
THICKNESS: 1.6 ±0.2
HOLE PATTERN (COMPONENT SIDE)

NO. OF CONTACTS: 40,60,68

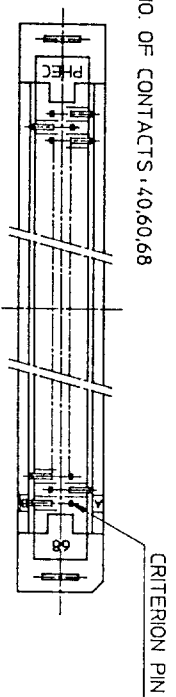


NO. OF CONTACTS: 30,34,50

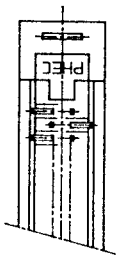


NOTE
THROUGH-HOLES FOR MOUNTING LATCHES ALSO SHOULD BE PLATED

NO. OF CONTACTS: 40,60,68



NO. OF CONTACTS: 30,34,50



TOLERANCES
UNLESS OTHERWISE SPECIFIED: ±0.3

CAT. NO.	NO. OF CONTACTS (MATING SIDE)	DIMENSIONS				
		A	B	C	D	E
PHEC30R-S21-H1	15/ROW X 2 ROWS	34.55	31.75	27.26	21.26	17.78
PHEC34R-S21-H1	17/ROW X 2 ROWS	37.09	34.29	29.8	23.8	20.32
PHEC40R-S21-H1	20/ROW X 2 ROWS	40.9	38.1	33.61	27.61	24.13
PHEC50R-S21-H1	25/ROW X 2 ROWS	47.25	44.45	39.96	33.96	30.48
PHEC60R-S21-H1	30/ROW X 2 ROWS	53.6	50.8	46.31	40.31	36.83
PHEC68R-S21-H1	34/ROW X 2 ROWS	58.68	55.88	51.39	45.39	41.91

MATERIAL

INSULATOR: PBT RESIN GLASS REINFORCED (UL94V-0)

COLOR: BLACK

CONTACT: PHOSPHOR BRONZE

MOUNTING LATCH: PHOSPHOR BRONZE

SOLDER PLATED

CONTACT PLATING TABLE

[THICKNESS: μm]

CONTACT AREA	REMAINDER
GOLD 0.25 MIN. OVER NICKEL 3.2	SOLDER OVER NICKEL

PRINTED CIRCUIT CONNECTOR
HIGH STAND OFF TYPE
CAT. NO.

PHEC___R-S21-H1

DRAWING NO. JSC 91840

REV 1

BURNDY
JAPAN, Ltd.

DESIGNED

DRAWN *M. Oba*

CHECKED A. matsuo

APPROVED *S. Ito*

DATE Aug. 17, 1992

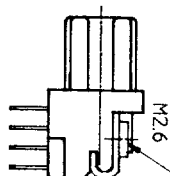
SCALE

DIM IN mm

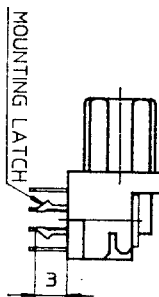
MATERIAL

REV	DATE	DESCRIPTION	CKD
1	93	WRONG CONTACT DIM. CORRECTED.	
2	93		
3	93		

SCREW NUT



PHEC...R-R212



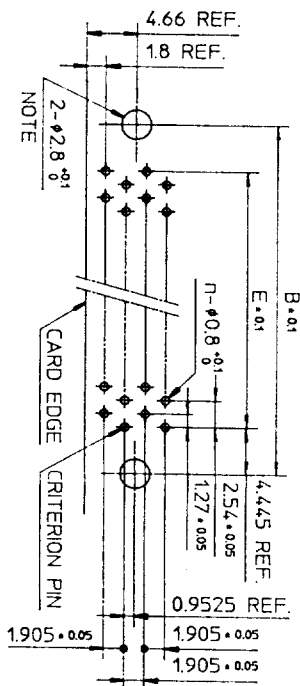
PHEC...R-R211

RECOMMENDED PC BOARD

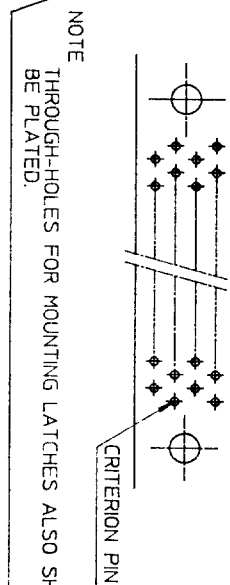
THICKNESS: 1.6 ±0.2
HOLE PATTERN (COMPONENT SIDE)

NO. OF CONTACTS: 40,60,68,80,
100,120

n : NO. OF CONTACTS



NO. OF CONTACTS: 30,34,50

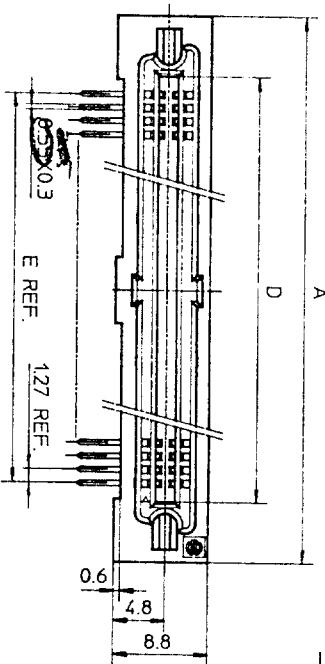


NOTE
THROUGH-HOLES FOR MOUNTING LATCHES ALSO SHOULD
BE PLATED.

TOLERANCES

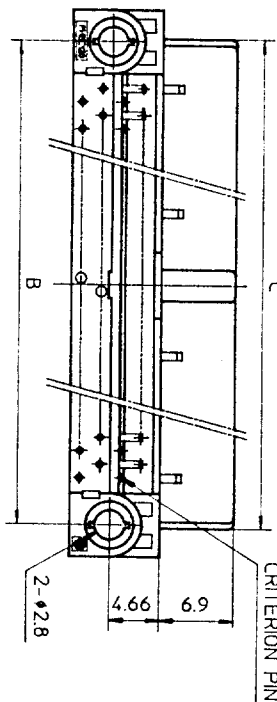
UNLESS OTHERWISE SPECIFIED, ±0.3

NO. OF CONTACTS: 40,60,68,80,100,120



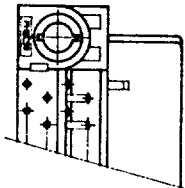
18 REF.
1905 REF.
1905 REF.

PHEC...R-R210



CRITERION PIN

NO. OF CONTACTS: 30,34,50



MATERIAL

BODY: PBT RESIN GLASS REINFORCED (UL94V-0)
LOCATOR COLOR: BLACK

CONTACT: PHOSPHOR BRONZE

MOUNTING LATCH: PHOSPHOR BRONZE
SOLDER PLATED

SCREW NUT: STEEL
NICKEL PLATED

CAT. NO.	NO. OF CONTACTS (MATING SIDE)	DIMENSIONS				
		A	B	C	D	E
PHEC30R-R21	15/ROW X 2 ROWS	32.67	26.67	27.26	21.26	17.78
PHEC34R-R21	17/ROW X 2 ROWS	35.21	29.21	29.8	23.8	20.32
PHEC40R-R21	20/ROW X 2 ROWS	39.02	33.02	33.61	27.61	24.13
PHEC50R-R21	25/ROW X 2 ROWS	45.37	39.37	39.96	33.96	30.48
PHEC60R-R21	30/ROW X 2 ROWS	51.72	45.72	46.31	40.31	36.83
PHEC68R-R21	34/ROW X 2 ROWS	56.8	50.8	51.39	45.39	41.91
PHEC80R-R21	40/ROW X 2 ROWS	64.42	58.42	59.01	53.01	49.53
PHEC100R-R21	50/ROW X 2 ROWS	77.12	71.12	71.71	65.71	62.23
PHEC120R-R21	60/ROW X 2 ROWS	89.82	83.82	84.41	78.41	74.93

CONTACT PLATING TABLE

(THICKNESS: μm)

CONTACT AREA	REMAINDER
GOLD 0.25 MIN. OVER NICKEL 3.2	SOLDER OVER NICKEL

PRINTED CIRCUIT CONNECTOR

CAT. NO.

PHEC...R-R21

DRAWING NO.

JSC 90738

REV

BURNDY
JAPAN, Ltd.

DESIGNED

DRAWN

CHECKED

APPROVED

DATE

SCALE

DIM. IN mm

MATERIAL

NO. 30,34,50,68 POSITIONS ADDED.

NO. EC 7866

NO. EC 7837

CKD

DESCRIPTION

REFERENCE

EC-PHEC 02

Mouser Electronics

Authorized Distributor

Click to View Pricing, Inventory, Delivery & Lifecycle Information:

[FCI / Amphenol:](#)

[PHEC120P-R211-ELF](#) [PHEC40R-RC11LF](#) [PHEC50P-SC11LF](#) [PHEC50R-RC11LF](#) [PHEC60RT-S210-M2LF](#)
[PHEC80R-RM11-XLF](#)