

TABLE 1 - CONNECTOR HEIGHT									
DWR-T200P-MXX6- <u>XX</u>	10	11	12	13	14	15	16	17	18
DIM A	8.32 [.328]	8.82 [.347]	11.82 [.465]	14.82 [.583]	15.82 [.623]	16.82 [.662]	18.82 [.741]	19.32 [.761]	20.82 [.820]
DIM B (REF)	16.00 [.630]	16.50 [.650]	19.50 [.768]	22.50 [.886]	23.50 [.925]	24.50 [.965]	26.50 [1.043]	27.00 [1.063]	28.50 [1.122]
MATED HEIGHT	19.50 [.768]	20.00 [.787]	23.00 [.906]	26.00 [1.024]	27.00 [1.063]	28.00 [1.102]	30.00 [1.181]	30.50 [1.201]	32.00 [1.260]
DWR-T200P-MXX6- <u>XX</u>	19	20	21	22	23	24	25	26	
DIM A	23.82 [.938]	26.82 [1.056]	28.82 [1.135]	30.82 [1.213]	10.82 [.426]	22.82 [.898]	13.82 [.544]	12.82 [.544]	
DIM B(REF)	31.50 [1.240]	34.50 [1.360]	36.50 [1.437]	38.50 [1.516]	18.50 [.728]	30.50 [1.201]	21.50 [.846]	20.50 [.846]	
MATED HEIGHT	35.00 [1.378]	38.00 [1.469]	40.00 [1.575]	42.00 [1.654]	22.00 [.866]	34.00 [1.339]	25.00 [0.984]	24.00 [0.945]	



REVISIONS			
REV	DESCRIPTION, ECR, EAR NO.	DATE	APP'D
P	ADDED 34mm HEIGHT OPTION TO TABLE 1	NOV02/18	J.SABO
Q	ADDED 25mm HEIGHT OPTION TO TABLE 1	DEC17/18	J.SABO
R	ADDED 24mm HEIGHT OPTION TO TABLE 1	JUL22/19	YH

PART NUMBER:

DWR - T 2 00 P - M X X 6 - XX

SERIES

DWR

PRODUCT TYPE

T = SLIMDRAWER FINISHED CONNECTOR

NUMBER OF POWER CONTACT POSITIONS

NUMBER OF SIGNAL CONTACT POSITIONS

GENDER

GENDER
P = PIN (MALE)

ORIENTATION

M = MEZZANINE

CONTACT OPTIONS

1 = 3.6mm RADSOK POWER

RADIAL FLOAT: 0.075mm

2 = 3.0mm ST RADSOK POWER,

RADIAL FLOAT: 0.375mm

CONTACT TERMINATION

3 = PCB TAIL

4 = PCB TAIL W/ LOCATING PINS

6 = PRESS FIT

7 = PRESS FIT W/ LOCATING PINS

A = M3 x 0.5 THREAD

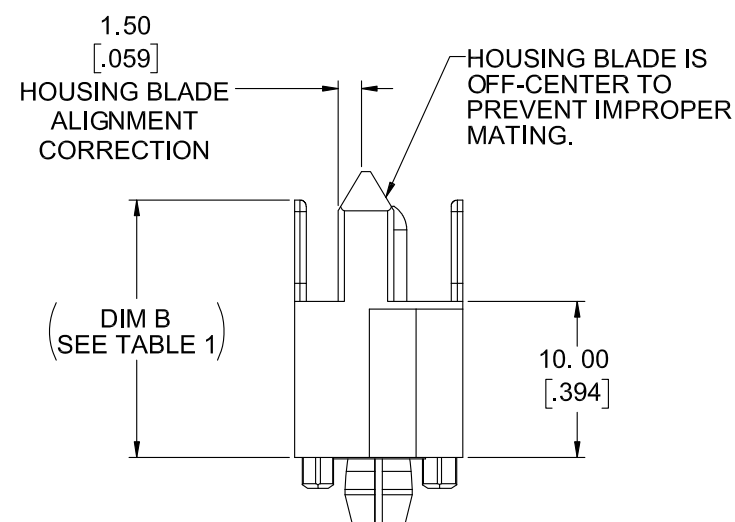
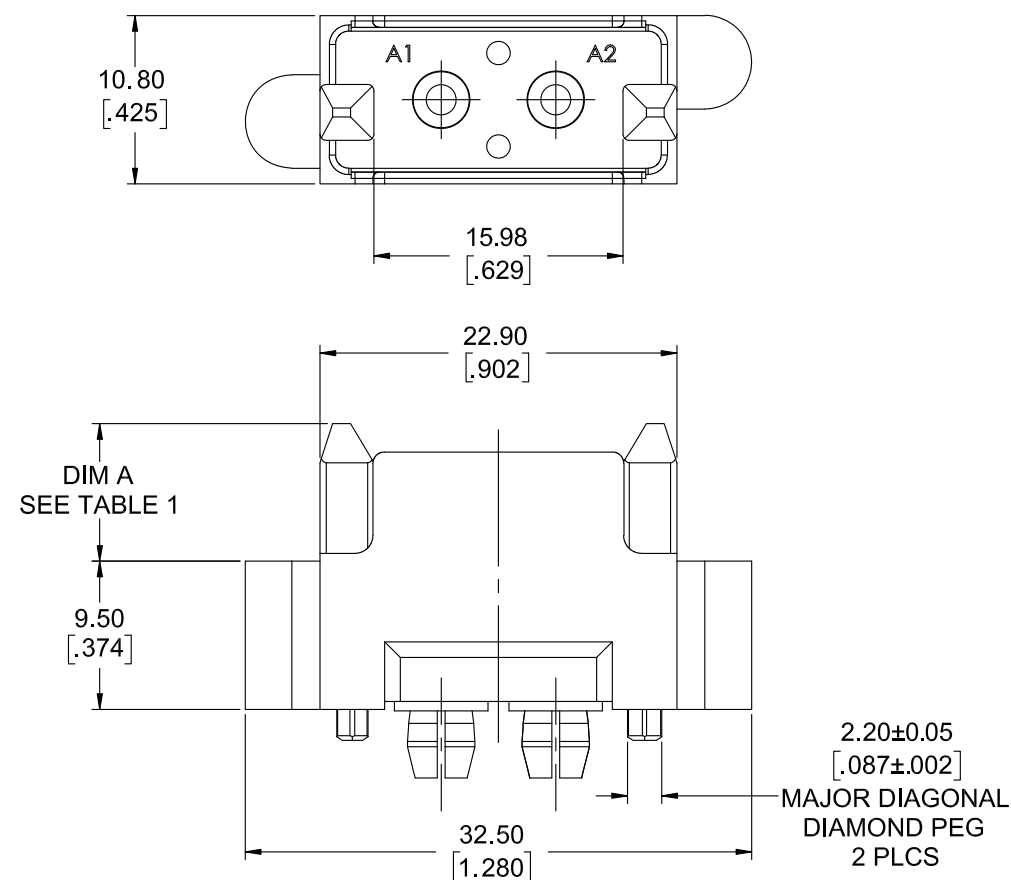
B = M3 THREAD W/ LOCATING PINS

PLATING OPTIONS

6 = 5.08 μ m [200 μ "] SILVER

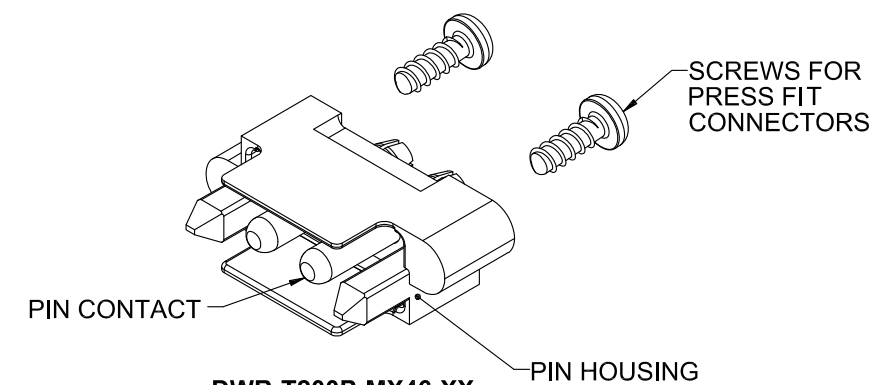
MATED MEZZANINE CONNECTOR HEIGHT

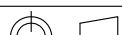
SEE TABLE 1



NOTES:

1. MATERIALS: ALL MATERIALS ARE RoHS COMPLIANT PER EU DIRECTIVE 2011/65/EC AND AMENDMENTS.
 - . HOUSING: ENGINEERING THERMOPLASTIC, UL FLAMMABILITY RATING 94V-0, COLOUR BLACK
 - . POWER CONTACTS: COPPER ALLOY PLATED WITH 5.08µm (200µ") SILVER OVER 1.27µm (50µ") NICKEL
 - . SCREW: STEEL ALLOY, NICKEL PLATED
2. WHEN MATED WITH SOCKET CONNECTOR P/N DWR-T200S-MXX6, THE ORDER OF MECHANICAL AND ELECTRICAL ENGAGEMENT IS A) HOUSING BLADES, B) HOUSING SHROUD, C) POWER CONTACTS
3. ELECTRICAL CHARACTERISTICS
 - . CURRENT RATING: UP TO 60A PER
 - . DIELECTRIC WITHSTANDING VOLTAGE: 1500VDC
 - . INSULATION RESISTANCE: 5000 MEGAOHMS
 - . OPERATING TEMPERATURE: -55C TO +105C



UNLESS SPECIFIED OTHERWISE		DRAWN	SANDY.X	JUL22/19	Amphenol Canada Corp.							
PRIMARY UNITS	MILLIMETERS	CHECKED	RZ	JUL22/19	Commercial Products							
SECONDARY	INCHES	M.E. APP'D			DWR SERIES SLIM DRAWER, 2 POWER PIN MEZZANINE CONNECTOR, 3.0 / 3.6mm RADSOK, TERMINATION OPTIONS, MATING HEIGHT OPTIONS, RoHS COMPLIANT							
REFERENCE IN PARENTHESES		Q.A. APP'D										
GENERAL TOLERANCES	DWG APPR.											
1 DECIMAL PLACE	±0.25	ENG. REL. NO.									DWG. NO.	
2 DECIMAL PLACES		REF.										
3 DECIMAL PLACES		THIRD ANGLE PROJECTION			DO NOT SCALE DRAWING	CODE ID NO.		03554	DWG SIZE	X	SCALE	3:1
ANGULAR DEGREES												

THIS DOCUMENT CONTAINS PROPRIETARY INFORMATION AND SUCH INFORMATION MAY NOT BE DISCLOSED TO OTHERS FOR ANY PURPOSE OR USED FOR MANUFACTURING PURPOSES WITHOUT WRITTEN PERMISSION FROM AMPHENOL CANADA CORP.

AB

C

D

E

F

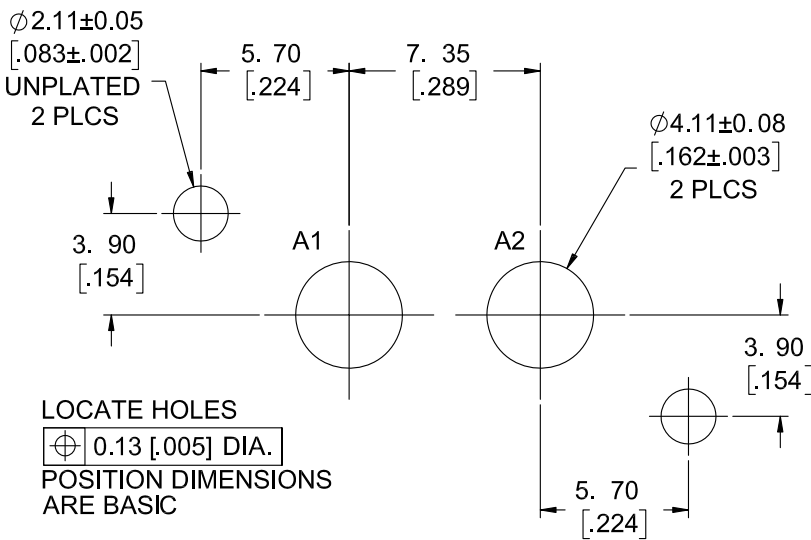
GH

REV I S I O N S			
REV	DESCRIPTION, ECN, EAR, NO.	DATE	APP'D
SEE SHEET 1/2			

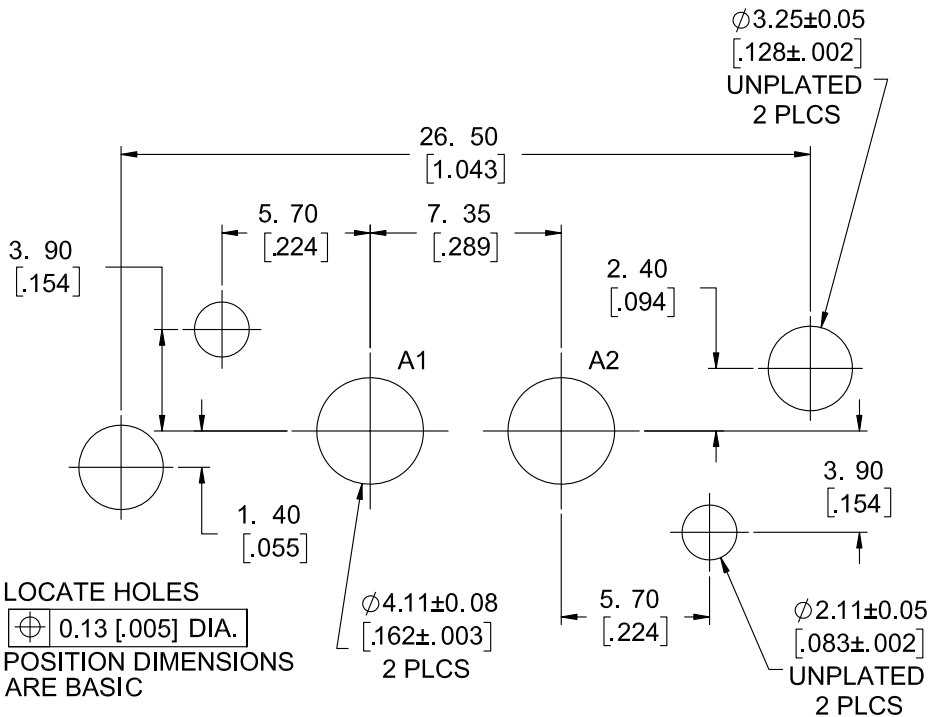
PCB TAIL TERMINATION

PRESS FIT TERMINATION

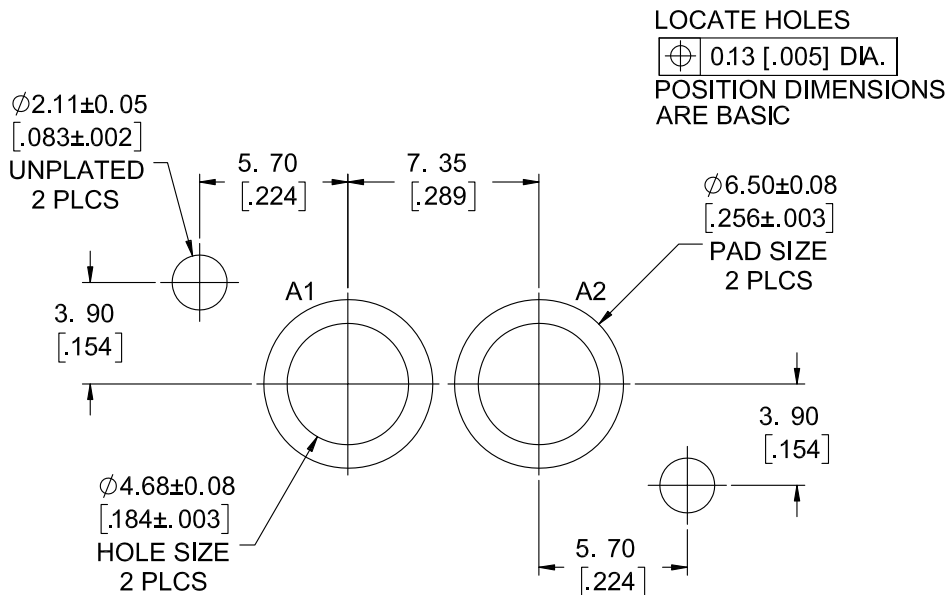
SCREW MOUNT TERMINATION



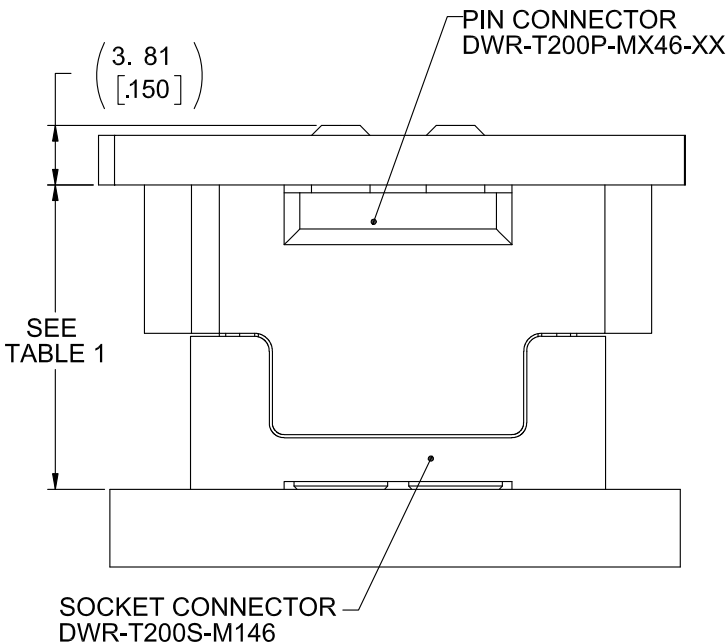
RECOMMENDED PCB LAYOUT
COMPONENT SIDE OF BOARD
SCALE 5:1



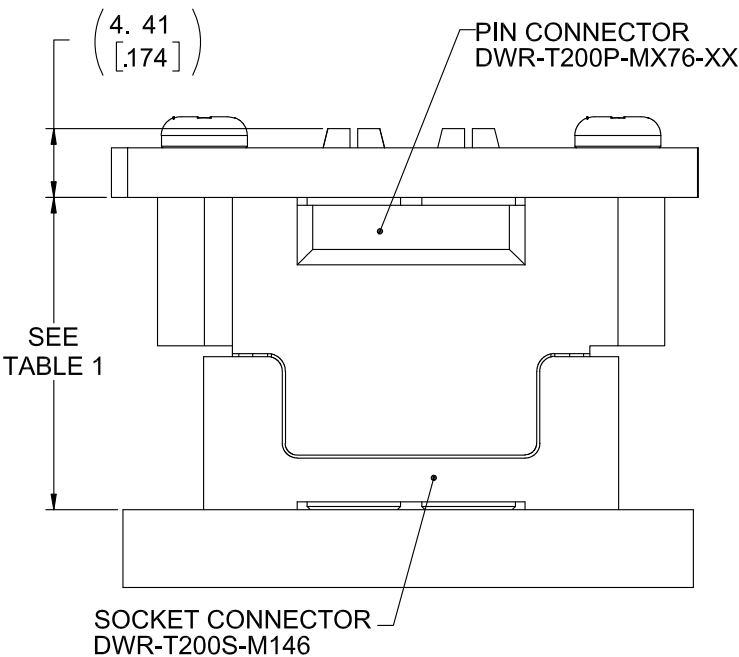
RECOMMENDED PCB LAYOUT
COMPONENT SIDE OF BOARD
SCALE 5:1



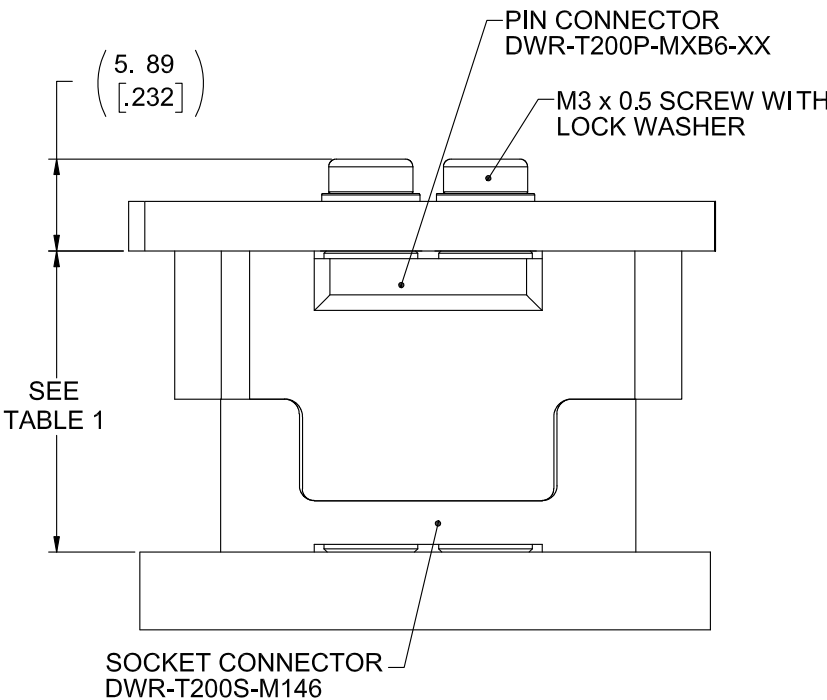
RECOMMENDED PCB LAYOUT
COMPONENT SIDE OF BOARD
SCALE 5:1



MATED ASSEMBLY



MATED ASSEMBLY



MATED ASSEMBLY



THIS DOCUMENT CONTAINS PROPRIETARY INFORMATION AND SUCH INFORMATION MAY NOT BE DISCLOSED TO OTHERS FOR ANY PURPOSE OR USED FOR MANUFACTURING PURPOSES WITHOUT WRITTEN PERMISSION FROM AMPHENOL CANADA CORP.

UNLESS SPECIFIED OTHERWISE		DRAWN	SANDY.X	JUL22/19
PRIMARY UNITS		CHECKED	RZ	JUL22/19
SECONDARY		M.E. APP'D		
REFERENCE IN PARENTHESES		Q.A. APP'D		
GENERAL TOLERANCES		DWG APPR		
1 DECIMAL PLACE		ENG. REL. NO.		
2 DECIMAL PLACES		REF.		
3 DECIMAL PLACES		THIRD ANGLE PROJECTION		
ANGULAR DEGREES		DO NOT SCALE DRAWING		

Amphenol Canada Corp.

Commercial Products

DWR SERIES SLIM DRAWER, 2 POWER PIN
MEZZANINE CONNECTOR, 3.0 / 3.6mm
RADSOK, TERMINATION OPTIONS, MATING
HEIGHT OPTIONS, RoHS COMPLIANT

P-DWR-T200P-MXX6-XX

REV
R

CODE ID NO. 03554 DWG SIZE X SCALE 3:1 SHEET 2 OF 2

Mouser Electronics

Authorized Distributor

Click to View Pricing, Inventory, Delivery & Lifecycle Information:

Amphenol:

<u>DWRT200PM13615</u>	<u>DWRT200PM14618</u>	<u>DWRT200PM14619</u>	<u>DWRT200PM16622</u>	<u>DWRT200PM1B613</u>
<u>DWRT200PM13612</u>	<u>DWRT200PM13619</u>	<u>DWRT200PM13621</u>	<u>DWRT200PM16614</u>	<u>DWRT200PM1A620</u>
<u>DWRT200PM1A622</u>	<u>DWRT200PM1B615</u>	<u>DWRT200PM14612</u>	<u>DWRT200PM14621</u>	<u>DWRT200PM17618</u>
<u>DWRT200PM1A613</u>	<u>DWRT200PM13622</u>	<u>DWRT200PM16611</u>	<u>DWRT200PM17614</u>	<u>DWRT200PM1A617</u>
<u>DWRT200PM1B620</u>	<u>DWRT200PM13620</u>	<u>DWRT200PM14613</u>	<u>DWRT200PM14620</u>	<u>DWRT200PM1A614</u>
<u>DWRT200PM1A621</u>	<u>DWRT200PM1B614</u>	<u>DWRT200PM13611</u>	<u>DWRT200PM14615</u>	<u>DWRT200PM14622</u>
<u>DWRT200PM17612</u>	<u>DWRT200PM1A623</u>	<u>DWRT200PM1B623</u>	<u>DWRT200PM13614</u>	<u>DWRT200PM16619</u>
<u>DWRT200PM17622</u>	<u>DWRT200PM17623</u>	<u>DWRT200PM1B612</u>	<u>DWRT200PM14614</u>	<u>DWRT200PM14623</u>
<u>DWRT200PM17620</u>	<u>DWRT200PM1A611</u>	<u>DWRT200PM1A615</u>	<u>DWRT200PM13623</u>	<u>DWRT200PM14611</u>
<u>DWRT200PM16610</u>	<u>DWRT200PM1A616</u>	<u>DWRT200PM1A618</u>	<u>DWRT200PM1B619</u>	<u>DWRT200PM16612</u>
<u>DWRT200PM17613</u>	<u>DWRT200PM17615</u>	<u>DWRT200PM1B621</u>	<u>DWRT200PM13616</u>	<u>DWRT200PM14616</u>
<u>DWRT200PM14617</u>	<u>DWRT200PM1A610</u>	<u>DWRT200PM1B610</u>	<u>DWRT200PM1B611</u>	<u>DWRT200PM13618</u>
<u>DWRT200PM16615</u>	<u>DWRT200PM17619</u>	<u>DWRT200PM1A612</u>	<u>DWRT200PM1B616</u>	<u>DWRT200PM14610</u>
<u>DWRT200PM16613</u>	<u>DWRT200PM17616</u>	<u>DWRT200PM1A619</u>	<u>DWRT200PM1B618</u>	<u>DWRT200PM1B622</u>
<u>DWRT200PM13610</u>	<u>DWRT200PM13617</u>	<u>DWRT200PM16616</u>	<u>DWRT200PM16618</u>	<u>DWRT200PM16623</u>
<u>DWRT200PM17611</u>	<u>DWRT200PM1B617</u>	<u>DWRT200PM16617</u>	<u>DWRT200PM17610</u>	<u>DWRT200PM17617</u>
<u>DWRT200PM13613</u>	<u>DWRT200PM16620</u>	<u>DWRT200PM16621</u>	<u>DWRT200PM17621</u>	