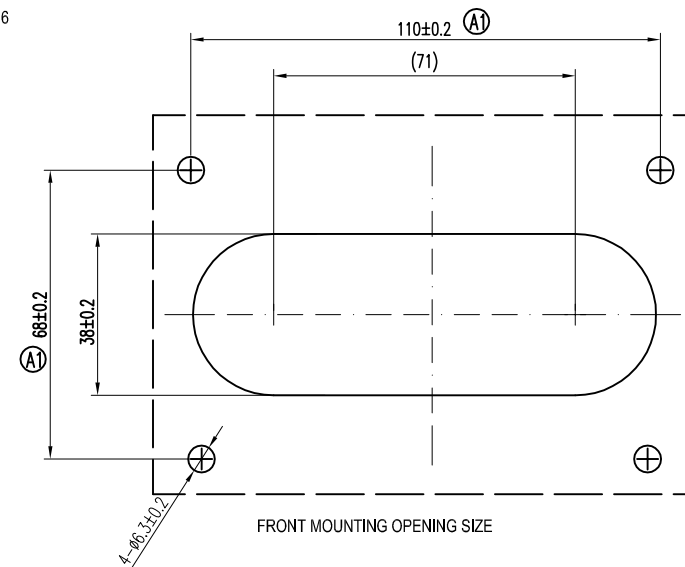
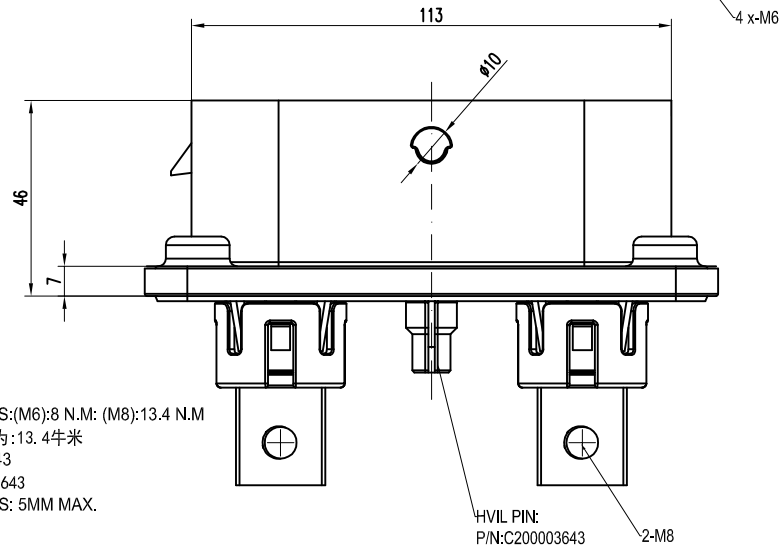
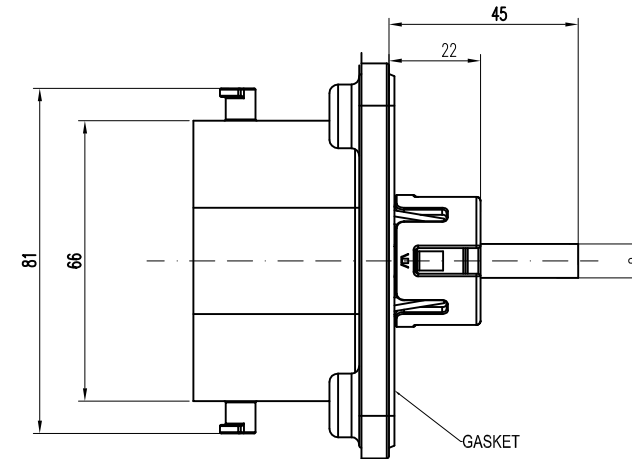
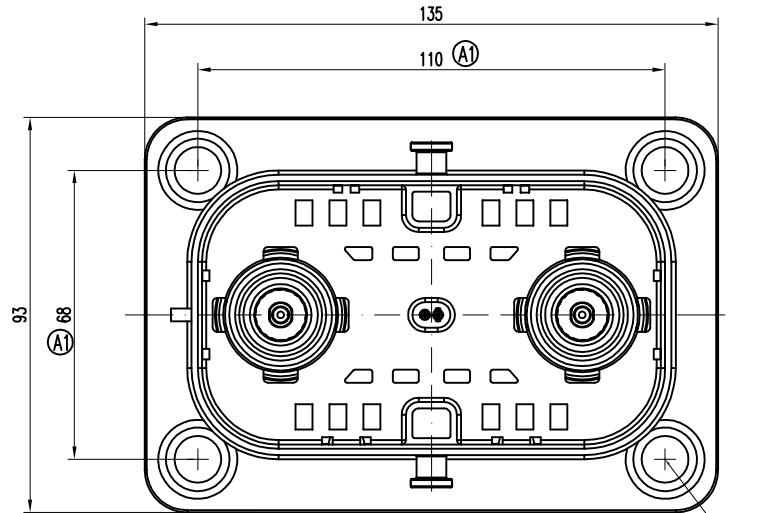


MSDF000F


Amphenol PCD SZ  
ORIGINAL  
PDF Format  
26 Apr.17R&D

REV	ECN	DESCRIPTION	DATE	MODIFIED
A		PRE-RELEASE	2017.04.18	Gino Wu
A1		UPDATE THE DIMENSIN	2017.04.26	Gino Wu



## TECHNICAL SPECIFICATIONS:

1. THREADED STUD TORQUE LIMITS: (M6):8 N.M: (M8):13.4 N.M  
M6螺钉扭力为: 8牛米; M8螺钉扭力为: 13.4牛米
2. SIGNAL CONNECTOR: C200003643  
高压互锁信号连接器型号: C200003643
3. MOUNTING SURFACE THICKNESS: 5MM MAX.  
法兰安装板厚度: 最大5MM
4. RATED VOLTAGE/额定工作电压:
  - 4.1 WITH FUSE/带保险丝: 最大1000V DC.
  - 4.2 WITHOUT FUSE/不带保险丝: 最大1500V DC.
5. RATED CURRENT/额定工作电流:
  - 5.1 WITH FUSE/带保险丝: SELECTION BY FUSE/由保险丝规格而变动:  
(160A、200A、250A、315A、350A、400A、450A、500A、550A、630A)
  - 5.2 WITHOUT FUSE/不带保险丝: 300A MAX./最大300A; 400A PEAK/400A 峰值
6. OPERATE TEMPERATURE: -40°C TO +50°C/工作环境温度-40°C ~ +50°C
7. HUMIDITY: 40%~70% (23±5°C)/相对湿度40%~70% (温度为23±5°C)
8. IP CODE: IP67, IP6K9K(MATED)/插合后IP等级为IP67
9. MATING & UN-MATING FORCE: <100N/插拔力小于100N
10. DURABILITY >500 CYCLES/插拔次数大于500次

DIMENSIONS	TOLERANCES	PROJECTION	Amphenol Pcd Shenzhen		TITLE				
ANSI Y14.5M	.X ±1		ENGR		MSD XL SOCKET				
UNITS: MM	.XX ±0.5		Gino Wu 2017.04.26						
CAD FILE	ANGLES ±0.5°								
ORIGINAL NOT FOR CUSTOMER DISTRIBUTION	THIS DOCUMENT CONTAINS PROPRIETARY INFORMATION WHICH IS THE CONFIDENTIAL PROPERTY OF AMPHENOL PCD SHENZHEN		CHKD		SIZE	DWG NO.	MSDXLF000F		REV
			APPD		A3				A1
			CODE:		SCALE 1:1		SHEET 1 OF 1		

# Mouser Electronics

Authorized Distributor

Click to View Pricing, Inventory, Delivery & Lifecycle Information:

[Amphenol:](#)

[C200003643](#)