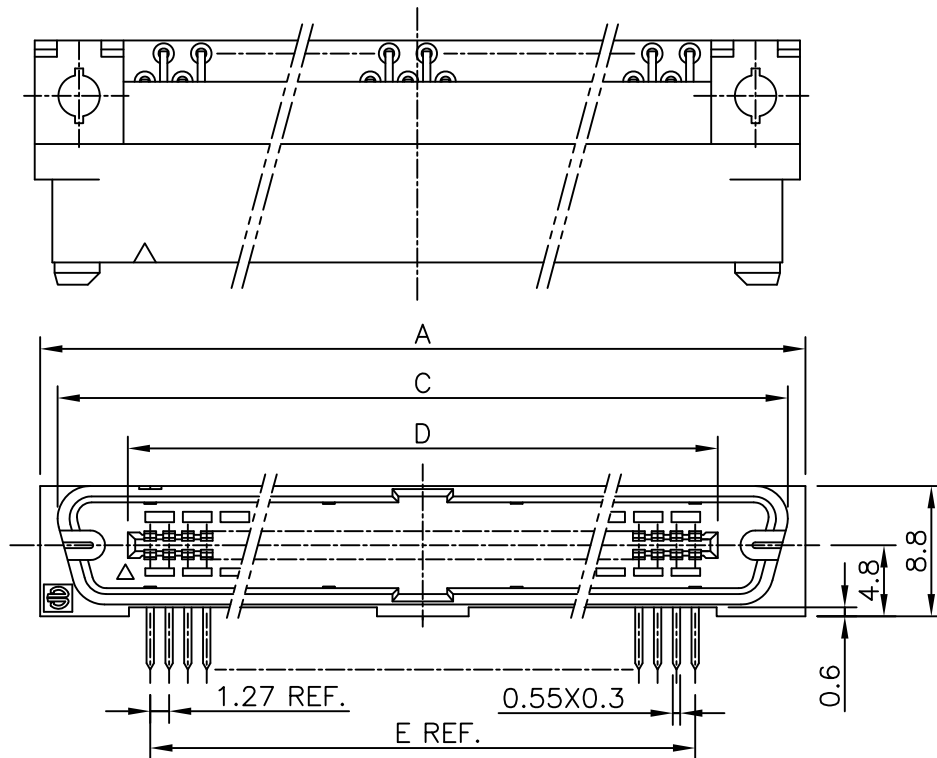


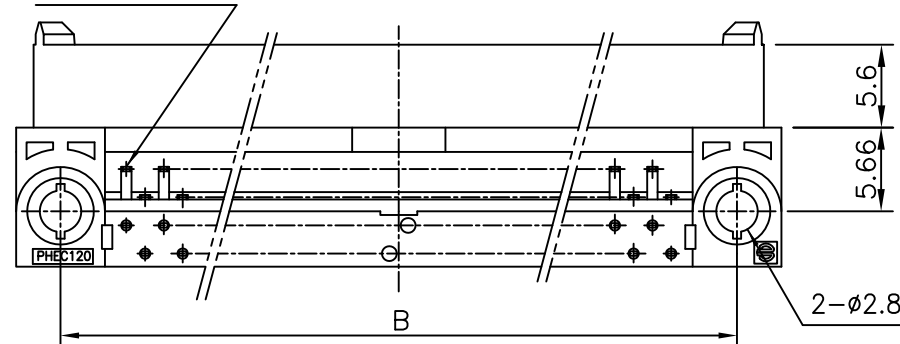
PRODUCT NO.

JSC 96358



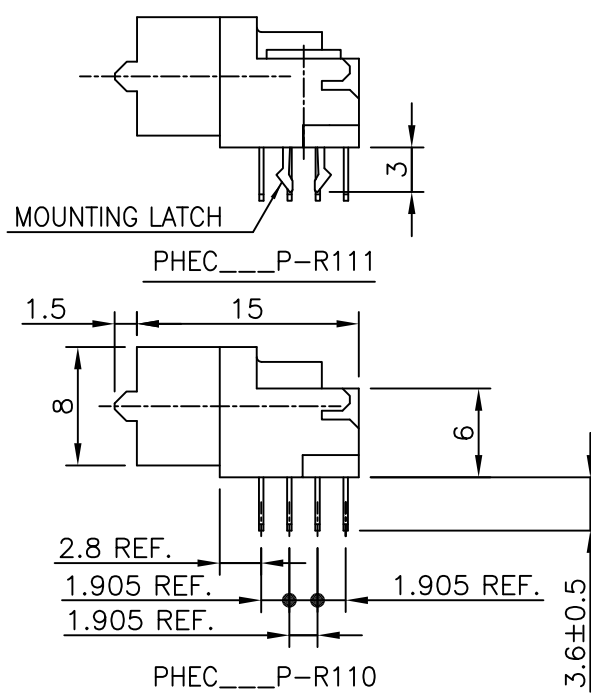
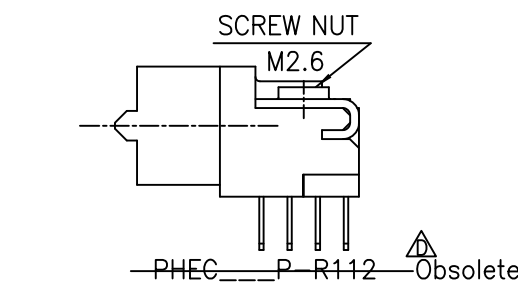
NO. OF CONTACTS : 40,60,68,80,100,120

CRITERION PIN

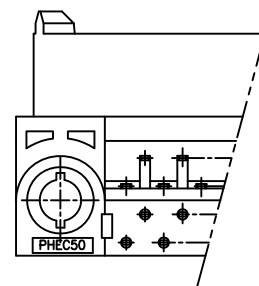


## NOTES

- 1.BODY MATERIAL : NYLON GLASS FILLED (UL94V-0), COLOR BLACK
- 2.TERMINAL MATERIAL : PHOSPHOR BRONZE
- 3.MOUNTING LATCH MATERIAL : PHOSPHOR BRONZE
- 4.LOCATOR MATERIAL : PBT GLASS FILLED
- 5.SCREW NUT : STEEL
- 6.TERMINAL FINISH  
CONTACT AREA : GOLD FLASH 0.1μm min. OVER NICKEL UNDERLAYER  
SOLDER TAILS : PURE Sn 2μm min. OVER NICKEL UNDERLAYER
- 7.MOUNTING LATCH FINISH : PURE Sn 2μm min. OVER NICKEL UNDERLAYER
- 8.SCREW FINISH : NICKEL
- 9.THIS PRODUCT MEETS EUROPEAN UNION DIRECTIVES AND OTHER COUNTRY REGULATIONS AS DESCRIBED IN GS-22-008
- 10.THE HOUSING WILL WITHSTAND EXPOSURE TO 260 DEGREE PEAK TEMPERATURE FOR 10 SECONDS IN A WAVE SOLDER APPLICATION WITH A 1.6mm MINIMUM THICK CIRCUIT BOARD.



NO. OF CONTACTS : 30,34,50



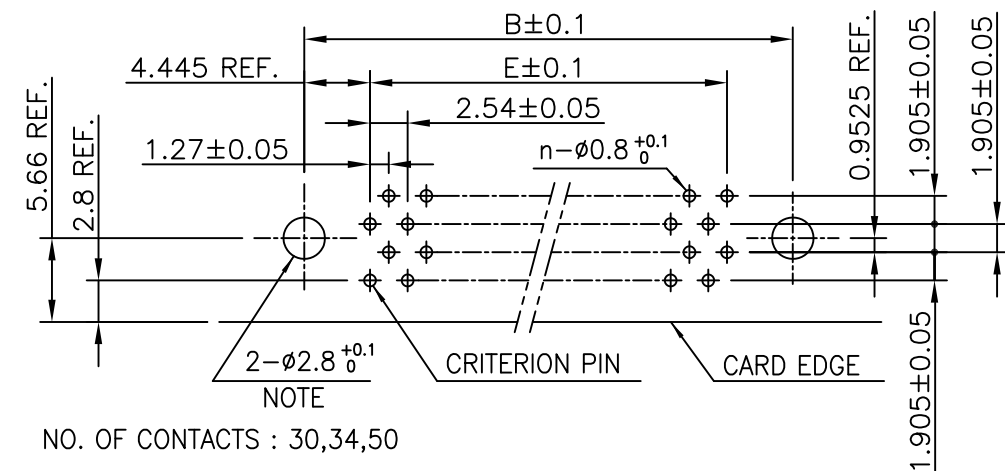
## RECOMMENDED PC BOARD

THICKNESS : 1.6 ±0.2

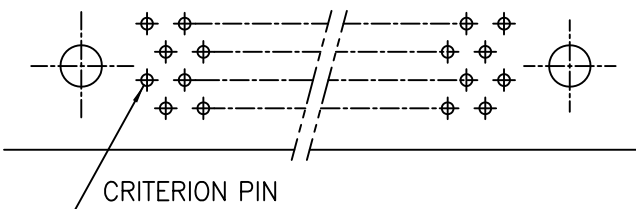
HOLE PATTERN (COMPONENT SIDE)

NO. OF CONTACTS : 40,60,68,80,100,120

(n : NO. OF CONTACTS)



NO. OF CONTACTS : 30,34,50



NOTE : THROUGH-HOLES FOR MOUNTING LATCHES ALSO SHOULD BE PLATED.

CAT. NO.	NO. OF CONTACTS (MATING SIDE)	DIMENSIONS				
		A	B	C	D	E
PHEC30P-R11_LF	15/ROW X 2 ROWS	32.67	26.67	30.30	20.42	17.78
PHEC34P-R11_LF	17/ROW X 2 ROWS	35.21	29.21	32.84	22.96	20.32
PHEC40P-R11_LF	20/ROW X 2 ROWS	39.02	33.02	36.65	26.77	24.13
PHEC50P-R11_LF	25/ROW X 2 ROWS	45.37	39.37	43.00	33.12	30.48
PHEC60P-R11_LF	30/ROW X 2 ROWS	51.72	45.72	49.35	39.47	36.83
PHEC68P-R11_LF	34/ROW X 2 ROWS	56.80	50.80	54.43	44.55	41.91
PHEC80P-R11_LF	40/ROW X 2 ROWS	64.42	58.42	62.05	52.17	49.53
PHEC100P-R11_LF	50/ROW X 2 ROWS	77.12	71.12	74.75	64.87	62.23
PHEC120P-R11_LF	60/ROW X 2 ROWS	89.82	83.82	87.45	77.57	74.93

mat'l. code				surface	tolerance	projection	product family	CODE
---				ISO 1302	ISO 406 ISO 1101	MM	PHEC	JP
ltr	description	ecn no	dr	date	tolerances unless otherwise specified		title	
A	RELEASED	J05-0186	S.O	3/29/'05	angles		PRINTED CIRCUIT CONNECTOR	
B	REVISED	J07-0047	S.O	1/25/'07	linear		(CAT.NO.PHEC _ _ _ P-R11_LF)	
C	REVISED	J07-0458	S.O	9/11/'07	0°±2'			
D	EOL of R112LF	ELX-J-17067	S.W	2/27/'14	dr	S.Watanabe	2/27/'14	
					enr	S.Watanabe	2/27/'14	
					chr	K.Ito	2/27/'14	
					appd	Y.Kameda	2/27/'14	
sheet index	revision	D					dwg no	sheet 1 of 1 size
	sheet	1					JSC 96358	A3
							type	Customer Drawing
								Rev.
								D

# Mouser Electronics

Authorized Distributor

Click to View Pricing, Inventory, Delivery & Lifecycle Information:

[Amphenol:](#)

[PHEC100P-R111LF](#) [PHEC30P-R111LF](#) [PHEC60P-R110LF](#) [PHEC60P-R111LF](#) [PHEC68P-R111LF](#) [PHEC100P-R110LF](#) [PHEC120P-R111LF](#) [PHEC40P-R110LF](#) [PHEC50P-R111LF](#) [PHEC30P-R110LF](#) [PHEC80P-R111LF](#)