

SIGN	DATE	DESCRIPTION	APPROVER
△	11/09'11	Add is cULus	Aaron
△	11/09'11	The Dim C is added	Aaron
THIS IS CAD DRAWING, DO NOT REVISE MANUALLY!!!			

Material:

- Item ㉑ Clamp: Brass Ni plated
- Item ㉒ Terminal (housing): Thermoplastic (UL94V-0)
- Item ㉓ Terminal (Cover): Thermoplastic (UL94V-0)
- Item ㉔ Male contact: PhBz, Tin plated.
- Item ㉕ Terminal screw: Steel Zinc plating " - " slot type
- Item ㉖ Terminal(track): Thermoplastic (UL94V-0)

Electrical: cULus

- Voltage rating: 300V
- Current rating: 12A
- Wire range:
- Solid wire(AWG):12-30
- Stranded wire(AWG):12-30
- Torque:5.2Lb-In.
- Screw:M3
- Wire strip length: 6-7 mm
- Withstanding Voltage: 1.6KV
- Operating temperature:-40°C to +115°C

△ Safety Approval: cULus

● Critical dimension: △

● Part No.:

**V9 xx 5 1 x 4 xxxx G**

No. OF POLES

02: 2 POLES

03: 3 POLES

...

24: 24 POLES

Color

0 Black (RAL9005)

5 Green(RAL6018/T)

6 Blue (RAL5015/A)

8 Grey(RAL7035/D)

C Green(RAL6018/U)

G: Pb<40000ppm

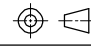
0000: "@" Logo (Standard)

000A: "ANYTEK" Mark  
Any special item by  
customer request.  
please contact sales  
department.

**ANYTEK**

**CUSTOMER COPY**

ALL RIGHTS RESERVED. REPRODUCTION OR ISSUE TO THIRD PARTIES IN ANY FORM WHATEVER IS NOT PERMITTED WITHOUT WRITTEN AUTHORITY FROM THE PROPRIETOR. PROPERTY OF ANYTEK TECHNOLOGY CO., LTD

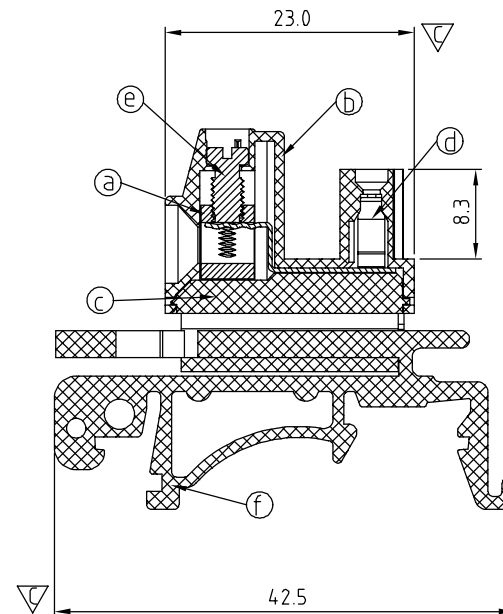
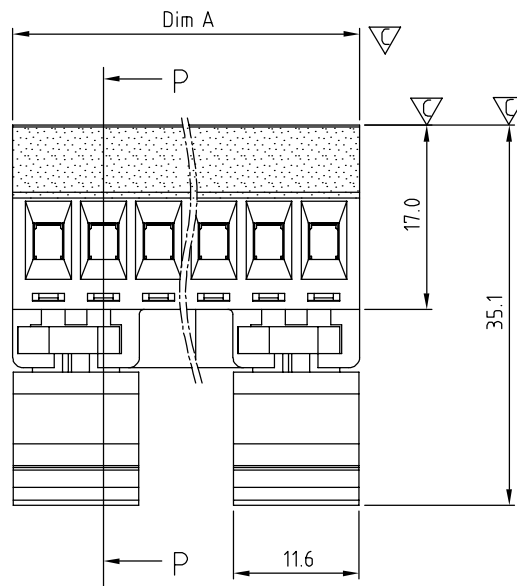
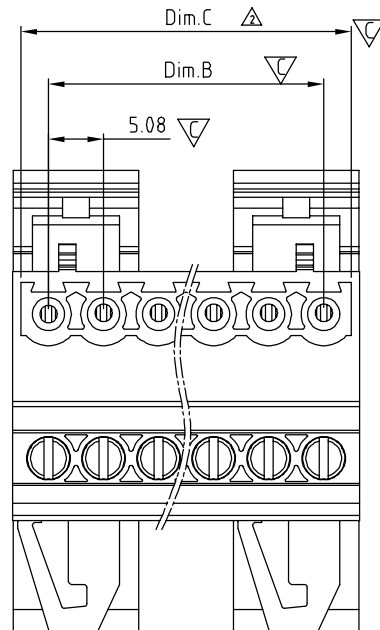
TITLE	V9-5.08 mm Series 2P-24P W/O Flange ( Dinrail holder B type )					
PART NO.	V9xx51x4xxxxG			DWG NO.	8V90002	
APPROVED	CHECKED	DESIGNED	DRAWN	CUST NO.		
		Aaron 2011.11.09	Tony 2008.01.19			Tolerance
						X. ±0.50
						X.X ±0.30
						X.XX ±0.10
						X° ±1°
				SHEET: 01/01	REV.: C	

Dimension

Dim.A	(N-1) × 5.08+6.6
Dim.B	(N-1) × 5.08
Dim.C	N × 5.08

N=Number of poles

Poles	Tolerance
2P - 6P	±0.15
7P - 12P	±0.20
13P - 18P	±0.30
19P - 24P	±0.40



SECTION P-P

# Mouser Electronics

Authorized Distributor

Click to View Pricing, Inventory, Delivery & Lifecycle Information:

## Amphenol:

<a href="#"><u>V90251540000G</u></a>	<a href="#"><u>V90351540000G</u></a>	<a href="#"><u>V90451540000G</u></a>	<a href="#"><u>V90551540000G</u></a>	<a href="#"><u>V90651540000G</u></a>	<a href="#"><u>V90751540000G</u></a>
<a href="#"><u>V90851540000G</u></a>	<a href="#"><u>V90951540000G</u></a>	<a href="#"><u>V91051540000G</u></a>	<a href="#"><u>V91151540000G</u></a>	<a href="#"><u>V91251540000G</u></a>	<a href="#"><u>V91351540000G</u></a>
<a href="#"><u>V91451540000G</u></a>	<a href="#"><u>V91551540000G</u></a>	<a href="#"><u>V91651540000G</u></a>	<a href="#"><u>V91751540000G</u></a>	<a href="#"><u>V91851540000G</u></a>	<a href="#"><u>V91951540000G</u></a>
<a href="#"><u>V92051540000G</u></a>	<a href="#"><u>V92151540000G</u></a>	<a href="#"><u>V92251540000G</u></a>	<a href="#"><u>V92351540000G</u></a>	<a href="#"><u>V92451540000G</u></a>	