


SIGN	DATE	DESCRIPTION	APPROVER
△	06/23'06	Voltage/Curren is changed from 250V/6A to 300V/10A	Marvin
△	06/23'06	Added cULus logo	Marvin
THIS IS CAD DRAWING, DO NOT REVISE MANUALLY!!!			

Material

- Item a Clamp: Brass(CuZn) Ni plated
- Item b Terminal screw: Steel Zinc plating "-" slot type
- Item c Female contact :PhBz (CuSn)Tin plated
- Item d Terminal (housing): Thermoplastic (UL94V-0)

Electrical cULus

- Voltage rating: 300V
- Current rating: 10A
- Wire range:
- Solid wire(AWG): 16-28
- Stranded wire(AWG): 16-28
- Torque: 1.7Lb-In
- Screw: M2
- Wire strip length: 5-6mm
- Withstanding Voltage: 1.6KV
- Operating temperature: -40°C to +115°C
- △ ● Safety approval: 


TH xx 41x 0 xxxx G

02 2 CONTACTS	0 Black (RAL9005)	Pb < 40,000ppm (RoHS)
03 3 CONTACTS	2 Red (RAL3001/D)	
... ..	3 Orange(RAL2011/P)	
24 24 CONTACTS	4 Yellow(RAL1018/A)	
	5 Green(RAL6018/T)	0000:"@Logo (Standard)
	6 Blue (RAL5015/A)	000A:"ANYTEK"Logo
	8 Grey(RAL7035/D)	Any special item by customer request, please contact sales department.

ANYTEK

CUSTOMER COPY

ALL RIGHTS RESERVED. REPRODUCTION OR ISSUE TO THIRD PARTIES IN ANY FORM WHATEVER IS NOT PERMITTED WITHOUT WRITTEN AUTHORITY FROM THE PROPRIETOR. PROPERTY OF ANYTEK TECHNOLOGY CO., LTD

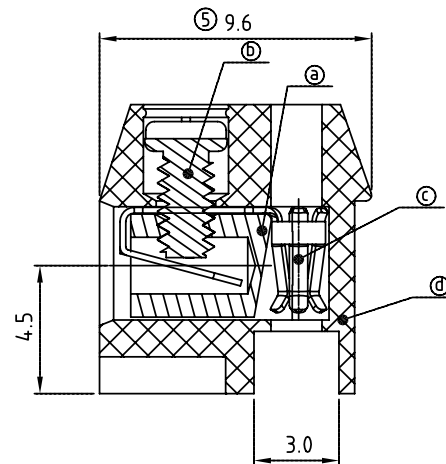
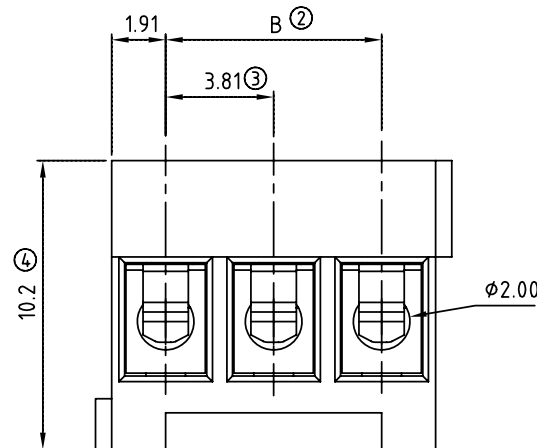
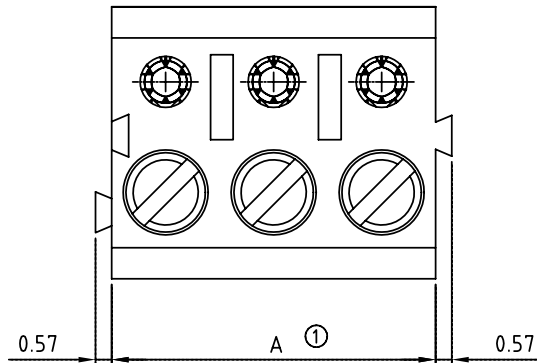
TITLE	TH-3.81mm series “-” Stackable Type							
PART NO.	THxx41x0xxxxG			DWG NO.	8TH0301			
APPROVED	CHECKED	DESIGNED	DRAWN	CUST NO.			Tolerance	
	Marvin 2006.06.23	Marvin 2006.06.23	Marvin 2006.06.23				UNIT: mm	X. ±0.50
				SHEET: 01/01	SCALE: NONE		X.X ±0.30	
					REV.: E		X.XX ±0.10	
							X° ±1°	

DIMENSION

A	N×3.81
B	(N-1)X3.81

N= NUMBER OF CONCATS

2p-6p	±0.15
7p-12p	±0.25
13p-16p	±0.35
17p-24p	±0.40



Mouser Electronics

Authorized Distributor

Click to View Pricing, Inventory, Delivery & Lifecycle Information:

Amphenol:

<u>TH1041500000G</u>	<u>TH0341500000G</u>	<u>TH1141500000G</u>	<u>TH2241500000G</u>	<u>TH1341500000G</u>	<u>TH2441500000G</u>
<u>TH1641500000G</u>	<u>TH1241500000G</u>	<u>TH1541500000G</u>	<u>TH2041500000G</u>	<u>TH2341500000G</u>	<u>TH0941500000G</u>
<u>TH1841500000G</u>	<u>TH0641500000G</u>	<u>TH0841500000G</u>	<u>TH1741500000G</u>	<u>TH0441500000G</u>	<u>TH0541500000G</u>
<u>TH1941500000G</u>	<u>TH0241500000G</u>	<u>TH0741500000G</u>	<u>TH1441500000G</u>	<u>TH2141500000G</u>	