

## D-SUBMINIATURE (D-SUB) D/8656/ DP SERIES

Amphenol's D-Subminiature (D-Sub) connectors are part of an industry standard for applications requiring robust and reliable connectors. These proven D-Sub connectors are one of the most popular Input/Output interconnects, addressing a wide variety of applications in telecommunications, data, consumer, industrial, military, instrumentation and medical. Amphenol offers a wide range of D-Sub connectors to meet various design requirements including those in harsh environment.

These high performance connectors are designed for severe environment applications in the field of telecommunications, aerospace, military (125°C) class and for particularly severe applications, especially high temperature (+155°C) class. It features machined contacts and is available in solder bucket, straight spills, angled spills and wire wrap terminations.



### TARGET MARKETS



### FEATURES

- A Basic I/O connector comes with five shell size and housing design
- Has a D-shaped shell design
- Meets DIN 41652 and MIL-C-24308 dimensional standards
- Available in Straight, Angle, Wire Wrap, Solder Bucket, Crimp terminations
- Frugal- D design (2 shells + 2 housings) with stamped & formed contacts
- DP series comes with screw machined contacts
- Various PCB and Panel mounting accessory options available
- Hoods available in plastic, metalized and metallic form with locking screws
- Lead-free and RoHS compliant

### BENEFITS

- Most popular Rugged and sturdy I/O connector
- Supports the need for polarisation
- Interchangeable and intermateable with other makes
- Support both PCB & Cable mounting requirements
- Economical solution
- Can meet 7.A current rating and suitable for high-end applications
- Wide variety of choices for secure connection
- Supports cable connection; Prevents risks of pulling up and accidental un-mating
- Meets environmental, health and safety requirements



D series is the standard D-Sub full metal shell version with stamped contacts. This design is basically proposed in solder bucket, straight and angled version without accessories



## PART NUMBER SELECTOR

## SPECIFIC DIMENSIONS

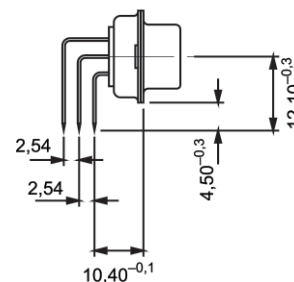
7.75 Max

2.50<sup>-0.25</sup>

Technical drawing of a mechanical part with dimensions: 4,90<sup>-0,30</sup>, fl 0,63, and 10.10 Max.

Technical drawing of a mechanical part with dimensions:

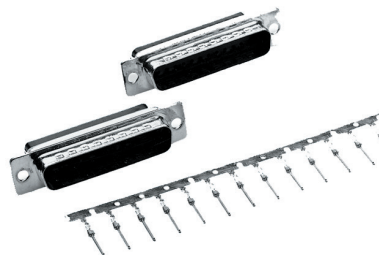
- Horizontal dimension:  $10,40_{-0,1}$
- Horizontal dimension:  $4,50_{-0,3}$
- Horizontal dimension:  $2,54$
- Vertical dimension:  $10,70_{-0,5}$



## CRIMP CONTACTS AND CABLE CONNECTORS



- 8656 series is a D connector with removable crimp contacts for AWG 20/24 or 24/28 wires
- It is used for commercial cabling like computer equipment, cash register
- It accepts our standard accessories (hoods, locking devices) and is available with a complete range of crimping tools from hand tools to high volume production equipment



### PART NUMBER SELECTOR

XXXX	X	XX	X	X	X	X	XX
SERIES	OPTIONS	NO. OF CONTACTS	CONTACTS	L	SHELL PLATING	DIMPLES	LEAD-FREE
8656		09 15 25 37 50					
	Standard mounting hole (Ø = 3.10)	-				Standard on male shell only	X
	Threaded insert UNC 4-40	O			Standard tin plated	T	
			Pin P Socket S		Supplied without contacts (obligatory)		

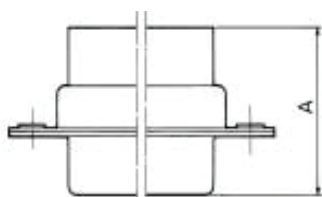
### PART NUMBER

Contact Type	Packaging Type		
	Box of 500 Contacts ✓	Reel of 400 Contacts R	Reel of 5000 Contacts ✓
AWG 24/28 male	865635006 Δ	8656300306 Δ	8656451006 Δ
AWG 24/28 female	865635106 Δ	8656300406 Δ	8656651006 Δ
AWG 20/24 male	865635206 Δ	8656300506 Δ	8656452006 Δ
AWG 20/24 female	865635306 Δ	8656300606 Δ	8656652006 Δ

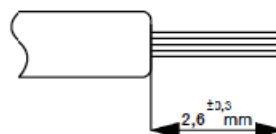
Δ Contact performance code

4LF: ≥200 mating/unmating, RoHS compatible  
5LF: ≥500 mating/unmating, RoHS compatible

### SPECIFIC DIMENSIONS



### CABLE PREPARATION



Contacts	09	15	25	37	50
A <sub>Max.</sub> Pin	17.19	17.19	17.35	17.35	17.35
Socket	17.44	17.44	17.44	17.44	17.44

## MACHINED CONTACTS



UL RECOGNISED FILE E 66906

• DP series is designed for high performance applications, particularly in the field of telecommunications: data transmission, private automatic branch switching, telecom (LNZ listed)

• It features machined contacts and is available with solder bucket, straight spills, angled spills, and wire wrap terminations



## PART NUMBER SELECTOR

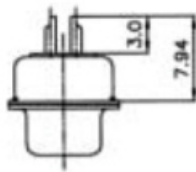
X	X	X	X	XX	X	X	XX	X	X	X	XX
SERIES	SHELL SIZE	P	FRONT ACCESSORIES	NO. OF CONTACTS	CONTACTS	TERMINATION TYPE	MATING CYCLES	C	SHELL PLATING	DIMPLES	LEAD-FREE
D	E A B C D				Pin P Socket S						LF X
Characterisation of DP series									Standard tin plated T		
			Standard mounting hole (Ø = 3.10)	-	09				PCB Accessories		
			Threaded insert M3	L	15						
			Female screw locks UNC 4-40	V	25						
			Spacers (straight spills only)	S	37						
					50						
			Solder buckets (N.A for plating 00)	-							
			Straight spills	3							
			Angled spills- 2.54mm between rows	5							
			Angled spills- 2.84mm between rows	8							
			Wire wrap (3 levels)	4							
			≥200	64							
			≥500; N.A for solder bucket termination	65							

Straight Spills	Angled Spills	Solder Buckets	Wire Wrap	Index
Without accessory	Two plastic brackets*	Without accessory	-	-
-	Without bracket	-	-	C
-	Two metal brackets	-	-	M
Harpoons (Compulsory with option L or V)	Harpoons (9 to 37 ways only)	-	-	G
-		Shielding termination fingers	-	H

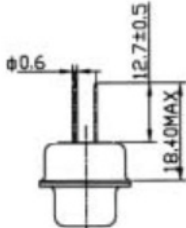
\*Except 50 pos. with monobloc plastic brackets

SPECIFIC DIMENSIONS

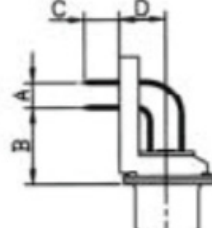
Solder Buckets



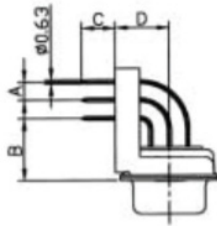
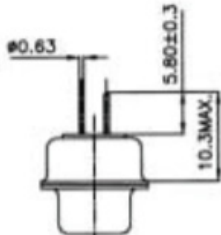
Wire Wrap



Right Angle Spills



Straight Spills



Dimension		Termination Code	
		5	8
A		2.54	2.84
B <sup>±0.1</sup>		10.30	10.30
C <sup>±0.5</sup>		4.00	4.00
D <sup>±0.19</sup>	9 to 37 contacts	7.20	7.20
	50 contacts	8.60	8.60

## TARGET MARKETS/APPLICATIONS

### TARGET MARKETS/APPLICATIONS



Asymmetric Digital Subscriber Line (ADSL)  
Base Station  
Switching  
Transmission



Set-top Box



Desktop and Laptop  
Storage System  
Router and Server



Automotive Diagnostics  
Control Drives  
Energy Meter  
Gaming Machine  
Test Equipment  
Office Automation  
POS & Handheld terminal  
Power Supplies  
Parking Meter  
Printer and Copier  
Renewable Energy  
Robotics  
Surveillance Camera



Medical Instrument



Avionics  
Military Equipment

# Mouser Electronics

Authorized Distributor

Click to View Pricing, Inventory, Delivery & Lifecycle Information:

## FCI / Amphenol:

[D37S24A6GV00LF](#) [D37P24B6GV00LF](#) [D09P13A4GL00LF](#) [D09P13A4GV00LF](#) [D09P13A4GX00LF](#)  
[D09P13A4PA00LF](#) [D09P13A4PL00LF](#) [D09P13A4PV00LF](#) [D09P13A4PX00LF](#) [D09P13A4UV00LF](#) [D09P13A6GL00LF](#)  
[D09P13A6GV00LF](#) [D09P13A6GX00LF](#) [D09P13A6PA00LF](#) [D09P13B4GV00LF](#) [D09P13B4GX00LF](#)  
[D09P13B4PA00LF](#) [D09P13B6GV00LF](#) [D09P13B6GX00LF](#) [D09P13B6PA00LF](#) [D09P24A4GI00LF](#) [D09P24A4GL00LF](#)  
[D09P24A4GV00LF](#) [D09P24A4GX00LF](#) [D09P24A4PA00LF](#) [D09P24A4PL00LF](#) [D09P24A4PV00LF](#)  
[D09P24A4PX00LF](#) [D09P24A6GL00LF](#) [D09P24A6GV00LF](#) [D09P24A6GX00LF](#) [D09P24A6PA00LF](#)  
[D09P24A6PV00LF](#) [D09P24A6PX00LF](#) [D09P24B4GL00LF](#) [D09P24B4GV00LF](#) [D09P24B4GX00LF](#)  
[D09P24B4PA00LF](#) [D09P24B6GV00LF](#) [D09P24B6GX00LF](#) [D09P24B6PA00LF](#) [D09P33E4GL00LF](#)  
[D09P33E4GV00LF](#) [D09P33E4GX00LF](#) [D09P33E4PA00LF](#) [D09P33E6GL00LF](#) [D09P33E6GV00LF](#)  
[D09P90C6GX00LF](#) [D09P91C4GX00LF](#) [D09S13A4GL00LF](#) [D09S13A4GV00LF](#) [D09S13A4GX00LF](#)  
[D09S13A4PA00LF](#) [D09S13A4PL00LF](#) [D09S13A4PV00LF](#) [D09S13A4PX00LF](#) [D09S13A4UV00LF](#) [D09S13A6GL00LF](#)  
[D09S13A6GV00LF](#) [D09S13A6GX00LF](#) [D09S13A6PA00LF](#) [D09S13B4GL00LF](#) [D09S13B4GV00LF](#)  
[D09S13B4GX00LF](#) [D09S13B4PA00LF](#) [D09S13B6GL00LF](#) [D09S13B6GV00LF](#) [D09S13B6GX00LF](#)  
[D09S13B6PA00LF](#) [D09S24A4GL00LF](#) [D09S24A4GV00LF](#) [D09S24A4GX00LF](#) [D09S24A4PL00LF](#)  
[D09S24A4PV00LF](#) [D09S24A4PX00LF](#) [D09S24A6GL00LF](#) [D09S24A6GV00LF](#) [D09S24A6GX00LF](#)  
[D09S24A6PA00LF](#) [D09S24B4GL00LF](#) [D09S24B4GV00LF](#) [D09S24B4GX00LF](#) [D09S24B4PA00LF](#)  
[D09S24B6GL00LF](#) [D09S24B6GV00LF](#) [D09S24B6GX00LF](#) [D09S24B6PA00LF](#) [D09S33E4GL00LF](#)  
[D09S33E4GV00LF](#) [D09S33E4GX00LF](#) [D09S33E4PA00LF](#) [D09S33E6GL00LF](#) [D09S33E6GV00LF](#)  
[D09S33E6GX00LF](#) [D09S91C4GI00LF](#) [D15P13A4GL00LF](#) [D15P13A4GV00LF](#) [D15P13A4GX00LF](#)  
[D15P13A4PA00LF](#) [D15P13A4PV00LF](#)