





SIGN	DATE	DESCRIPTION	APPROVER
	01/27/07	The soldering temperature from 245° to 250°	Aaron
	12/13/10	The operating temperature from -30°C to +105°C to -40°C to +115°C	Runner
	12/13/10	The color is changed	Runner
<i>THIS IS CAD DRAWING, DO NOT REVISE MANUALLY!!!</i>			

Material

- Item ① Solder Pin(Contact pin) : Brass ,Tin plated
- Item ② Spring clamp : Stainless steel
- Item ③ Terminal cover: Thermoplastic (UL94V-0)
- Item ④ Terminal housing: Thermoplastic (UL94V-0)

Electrical cULus

- Voltage rating:150V
- Current rating:4A
- Wire range:
- Solid wire(AWG):22-28
- Stranded wire(AWG):22-28
- Wire strip length:6-7mm
- Withstanding Voltage:1.3KV
- ⚠ ● Operating temperature:-40°C to +115°C
- ⚠ ● Soldering temperature:250°C±10°C/5 Sec
- Safety approval : us

H E xx 4 0 x 1 xxxx G

➤ G: Pb<40,000ppm

Poles

02 2Contacts

03 3Contacts

12 12Contacts

0 Black(RAL9005)

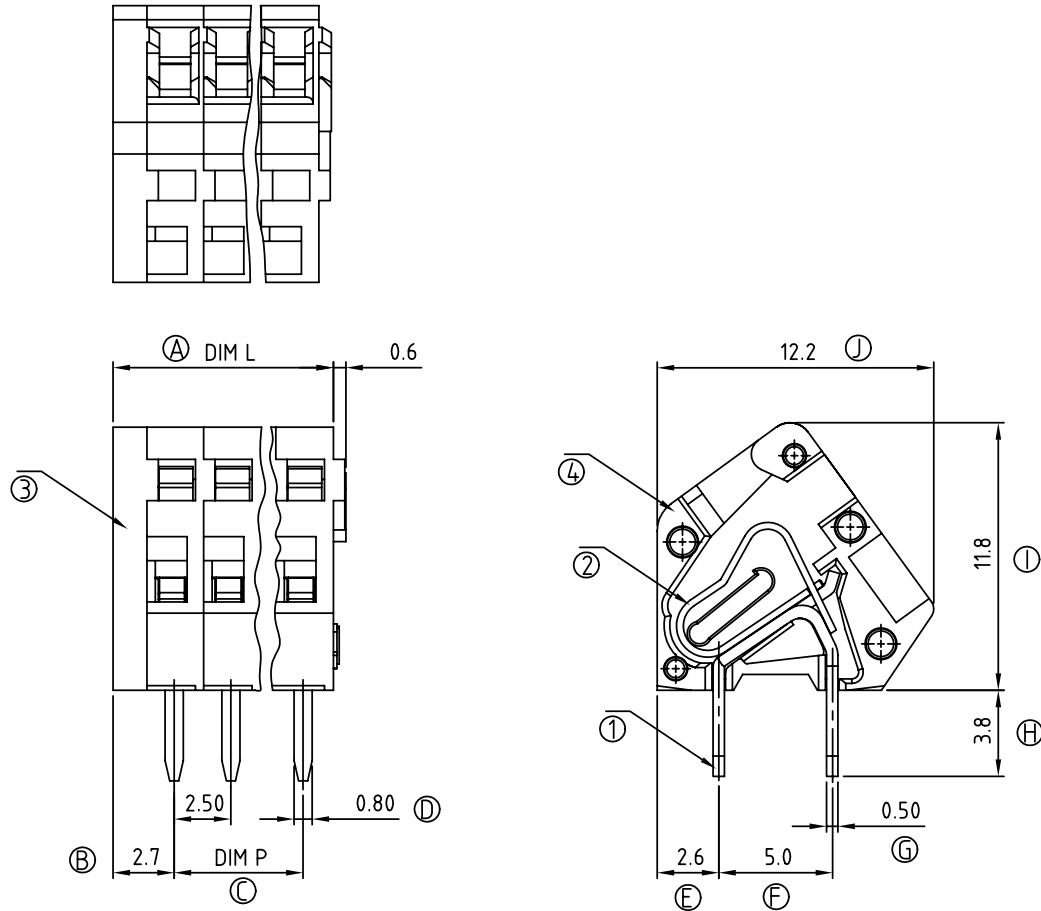
3 Orange(RAL2011/P)

5 Green(RAL6018/T)

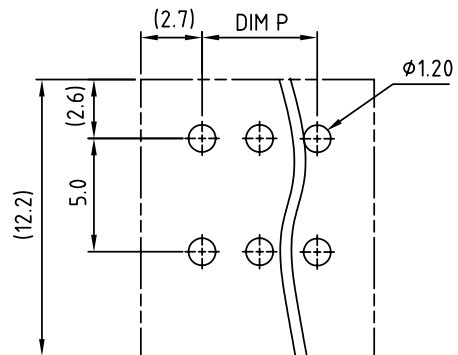
6 Blue(RAL5015/A)

8 Grey (RAL7004/P)

0000 Standard @ Logo
000A Standard ANY Logo
Any special item by
customer request,
please contact sales
department.



N=Number of poles



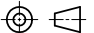
P.C.B LAYOUT

Dimension

DIM L	$N \times 2.5 + 1.5$
DIM P	$(N-1) \times 2.5$

N=Number of poles

POLES	DIM A	DIM B
2p-8p	± 0.15	± 0.15
9p-12p	± 0.25	± 0.20

<h1>ANYTEK</h1>				<h2>CUSTOMER COPY</h2> <p>ALL RIGHTS RESERVED. REPRODUCTION OR ISSUE TO THIRD PARTIES IN ANY FORM WHATSOEVER IS NOT PERMITTED WITHOUT WRITTEN AUTHORITY FROM THE PROPRIETOR. PROPERTY OF ANYTEK TECHNOLOGY CO., LTD</p>			
TITLE		HE 2.5 series without lever					
PART NO.		HExx40x1xxxG		DWG NO.		8HE0002	
APPROVED		CHECKED	DESIGNED	DRAWN	CUST NO.		Tolerance
			Runner 2010.12.13	Aaron 2007.01.27			X. ±0.50 X.X ±0.30 X.XX ±0.10 X° ±1°
					UNIT: mm SCALE: NONE SHEET: 01/01 REV.: D		

Mouser Electronics

Authorized Distributor

Click to View Pricing, Inventory, Delivery & Lifecycle Information:

[Amphenol:](#)

[HE0240310000G](#) [HE0340310000G](#) [HE0440310000G](#) [HE0540310000G](#) [HE0640310000G](#) [HE0740310000G](#)
[HE0840310000G](#) [HE0940310000G](#) [HE1040310000G](#) [HE1140310000G](#) [HE1240310000G](#)