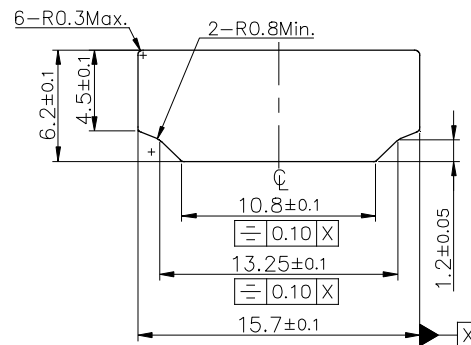
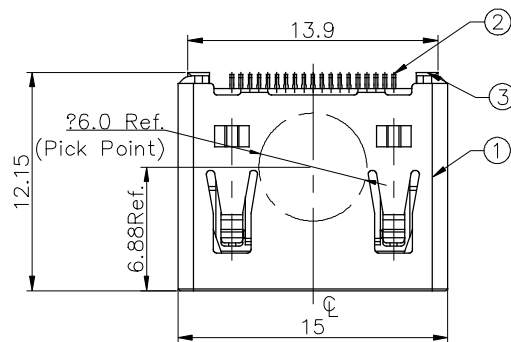
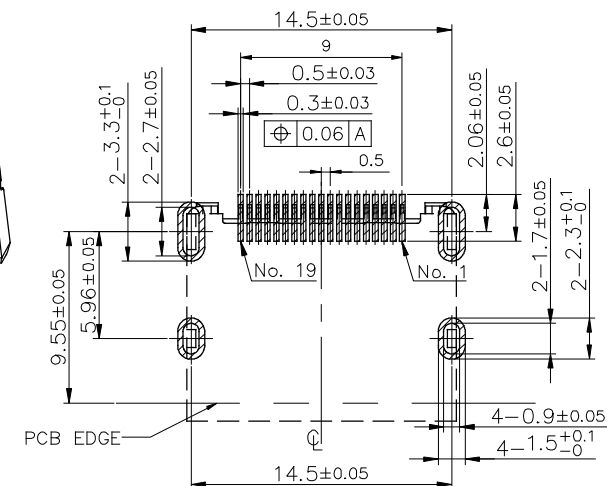
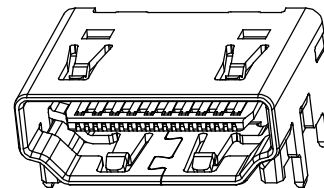
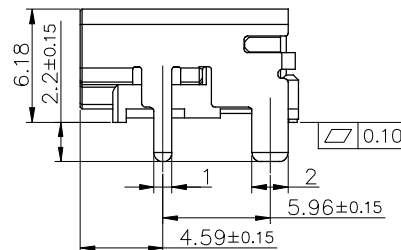
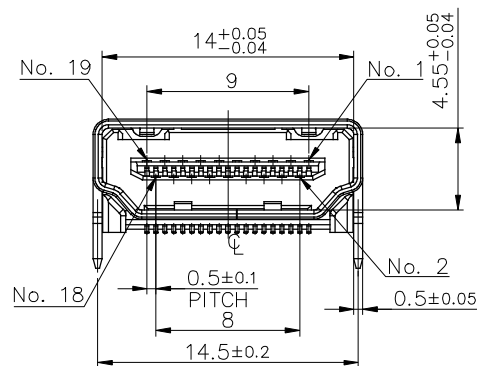
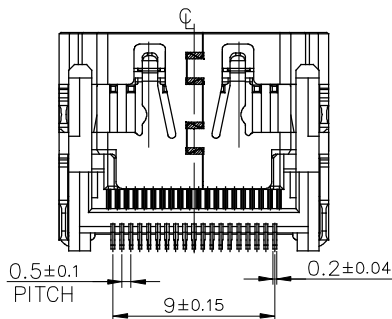


PRODUCT NUMBER

10126118-XXXLF



RECOMMENDED PANEL CUT OUT DIMENSION


 RECOMMENDED PCB LAYOUT (TOP VIEW)
 GENERAL TOLERANCE ±0.05mm (T=1.60±0.05)

 PART No.
 10126118-XXXLF

 PACKING
 R: TAPE & REEL

CONTACT AREA PLATED

 01: Au 1u"
 02: Au 5u"
 03: Au 10u"
 04: Au 15u"
 05: Au 20u"
 06: Au 30u"

NOTES:

- PRODUCT PERFORMANCE:
 RATING CURRENT: 0.5A
 RATING VOLTAGE: 40V
 INSULATION RESISTANCE:
 A) UNMATED: 100MOHM MIN. AT 500V DC
 B) MATED: 10MOHM MIN. AT 150V DC
 DIELECTRIC WITHSTANDING VOLTAGE: 300V AC 1 MINUTE
 CONTACT RESISTANCE: 10m OHM MAX. (EXCLUDING CONDUCTOR RESISTANCE)
 OPERATION TEMPERATURE: -20°C~+85°C.
 STORAGE TEMPERATURE: -20°C~+65°C.
- MECHANICAL CHARACTERISTICS :
 INSERTION FORCE: 44.1N MAX.
 WITHDRAWING FORCE: 9.8N MIN., 39.2N MAX.
 DURABILITY: 10000 CYCLES
- PRODUCT SPECIFICATION: GS-12-1171
- PACKAGE SPECIFICATION: GS-14-2351
- THIS PRODUCT MEETS EUROPEAN UNION DIRECTIVES AND OTHER COUNTRY REGULATIONS AS DESCRIBED IN GS-47-0004.
- THE HOUSING WILL WITHSTAND EXPOSURE TO 245°C PEAK TEMPERATURE 10 SECONDS IN A CONVECTION, INFRA-RED OR VAPOR PHASE REFLOW OVEN.

③	HOUSING	1 PCS	THERMOPLASTIC PLASTIC, UL94V-0	Black
②	TERMINAL	1 SET	COPPER ALLOY	Au PLATED
①	SHELL	1 PCS	SPCC	Ni PLATED
NO.	PART NAME	QTY.	MATERIAL	REMARK
mat'l. code		surface	tolerance	projection
ltr	ecn no	dr	date	product family
A		TAI	2013-09-27	HDMI A TYPE RECEPTACLE RIGHT ANGLE, SMT TYPE
		angles	tolerances unless otherwise specified	title
		0°	16 < L ≤ 63 ± 0.4	MM
		45°	4 < L ≤ 16 ± 0.3	scale
		X°±5°	L ≤ 4 ± 0.2	dwg no
		dr	KENNY TAI 2013-06-14	sheet 1 of 1
		engr	KENNY TAI 2013-06-14	size
		chr	KENNY TAI 2013-09-27	A4
		appd	PM ZHENG 2013-10-04	type
sheet index	revision	A		CUSTOMER Drawing
	sheet	1		

Mouser Electronics

Authorized Distributor

Click to View Pricing, Inventory, Delivery & Lifecycle Information:

[FCI / Amphenol:](#)

[10126118-02RLF](#)