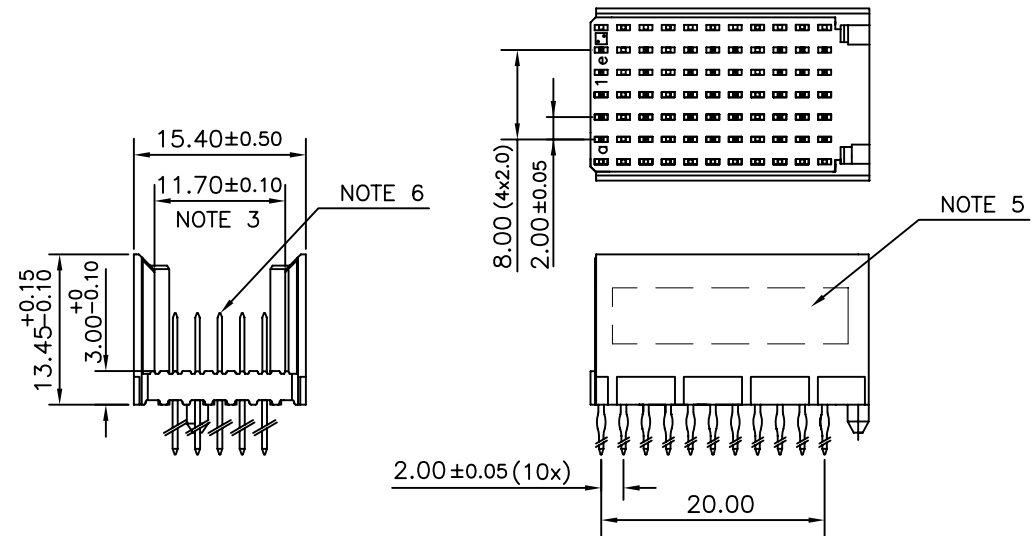


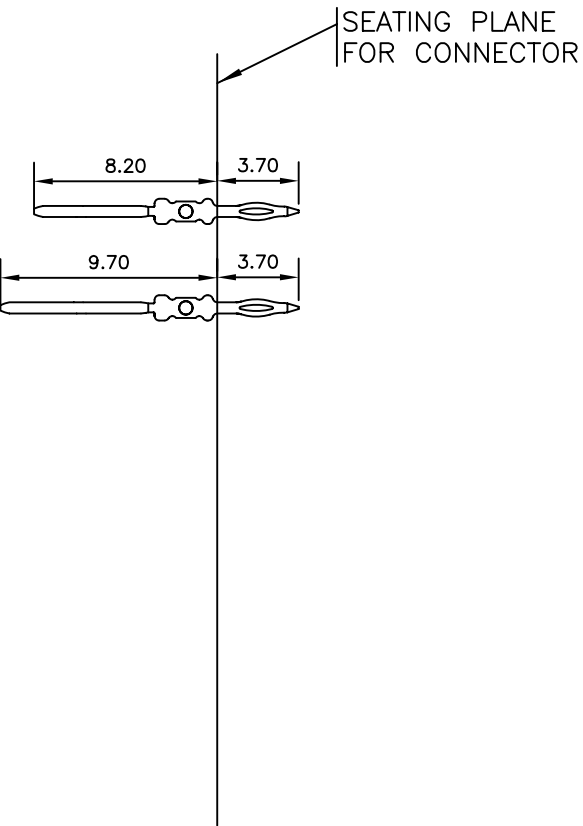
LOADING PATTERN MATING SIDE

f	0	0	0	0	0	0	0	0	0	0
e	5	0	5	0	4	4	4	0	4	4
d	5	0	5	0	4	4	4	0	4	4
c	5	0	5	0	4	4	4	0	4	4
b	5	0	5	0	4	4	4	0	4	4
a	5	0	5	0	4	4	4	0	4	4
z	0	0	0	0	0	0	0	0	0	0
POS	01				05				10	

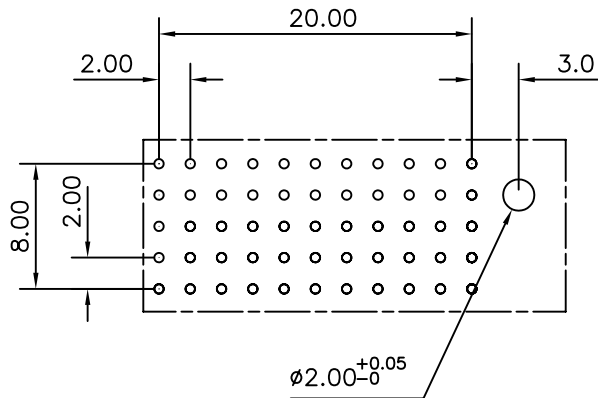
LOADED CONNECTOR ASSEMBLY  
(FOR EXAMPLE)



CONTACT OVERVIEW



LAY-OUT P.C.B.-HOLE



HM2P09PDL3C0-  
LEAD FREE INDICATOR : LF = LEAD FREE  
(DIGIT 15 & 16)  
PLATING CODE (DIGIT 13 AND 14)  
(REF DRW NO. BS,C , 201844 , 003)

NOTES

- THIS PRODUCT IS CSA APPROVED.
- THIS PRODUCT IS UL RECOGNIZED.
- MEASURED AT THE BOTTOM.
- MATERIAL CONTACT: PHOSPHORBRONZE  
HOUSING: CREAM WHITE GLASS FILLED POLYESTER UL-94V0
- CONNECTOR PRINTED WITH P/N AND DATE CODE.
- FOR ACTUAL CONTACT LOADINGS, SEE LOADING PATTERN MATING SIDE.
- SHAPE OF CONNECTOR HOUSING CAN ALTER DEPENDING ON PRODUCTION LOCATION
- THIS PRODUCT (LF) MEETS EUROPEAN UNION DIRECTIVES AND OTHER COUNTRY REGULATIONS AS DESCRIBED IN GS-22-008
- FOR RECOMMENDED PTH DIMENSIONS REFER DRAWING : BS, A , 201572 , 001

CATALOG NO: HM2P09PDL3C0-----

mat'l. code SEE NOTE 4				surface ISO 1302 ✓	tolerance ISO 406 ISO 1101	projection MM	product family MILLIPACS			
ltr	ecn no	dr	date	tolerances unless otherwise specified		MM	title			
A	108-0143	MINI	2008-10-17	angles	linear		MPACS 5+2R STR HDR PF CONN TYPE C			
				0°±1°						
				dr	MINI K VANDANATH	2008-10-17	dwg no		sheet 1 of 1	size
				enr	ALEX BABU	2008-10-17	FCI		BS, C ,203028, 840	
				chr	ALEX BABU	2008-10-17			A3	
				appd	ALEX BABU	2008-10-17				
sheet index	revision sheet	A	1							

# Mouser Electronics

Authorized Distributor

Click to View Pricing, Inventory, Delivery & Lifecycle Information:

[FCI / Amphenol:](#)

[HM2P09PDL3C0N9LF](#)