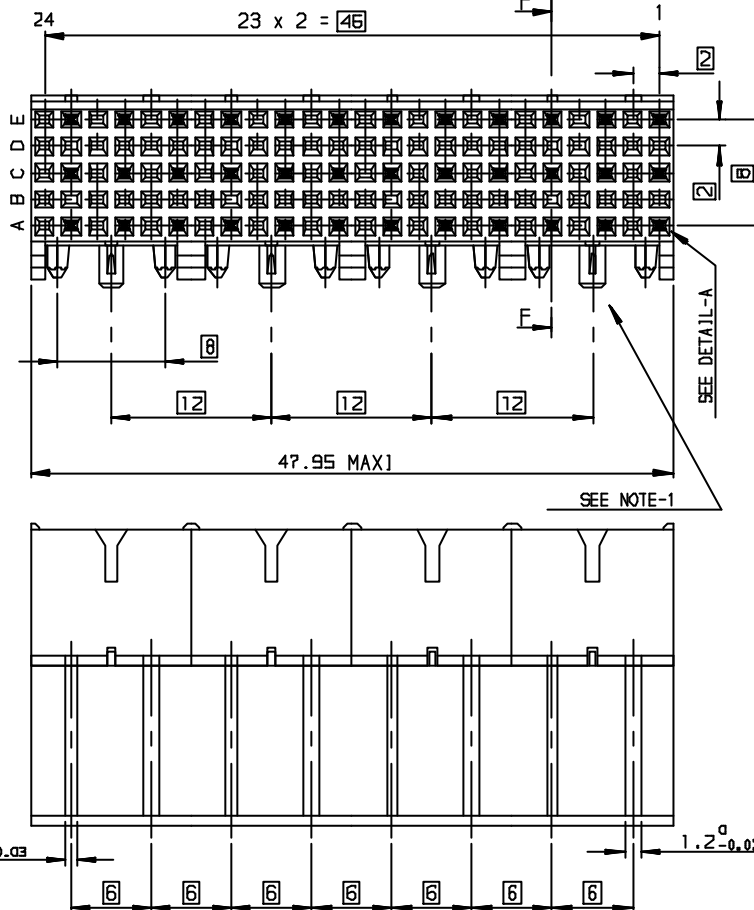
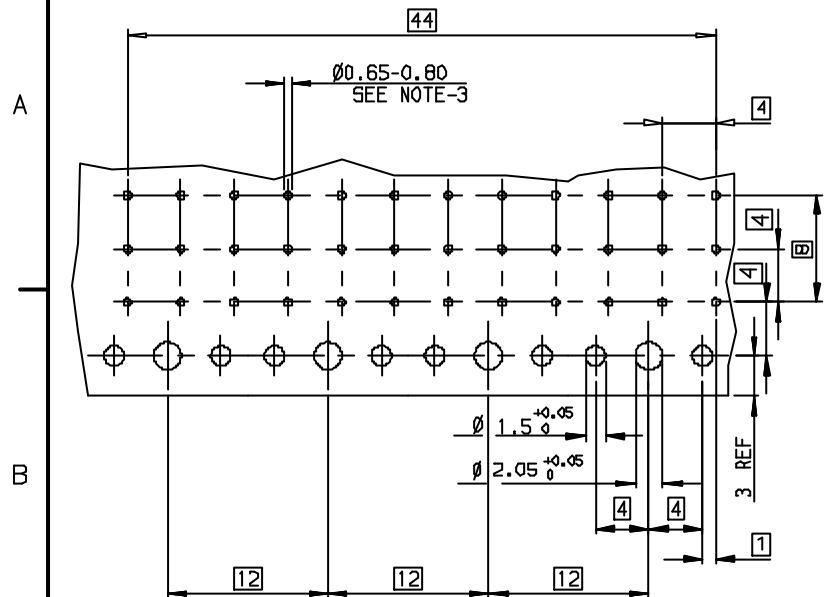
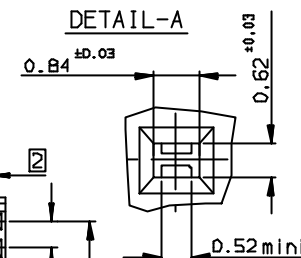


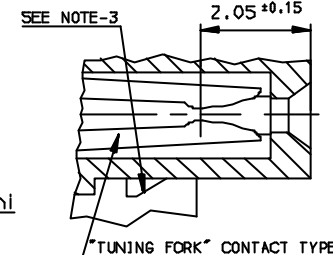
LAYOUT FOR P.C.B



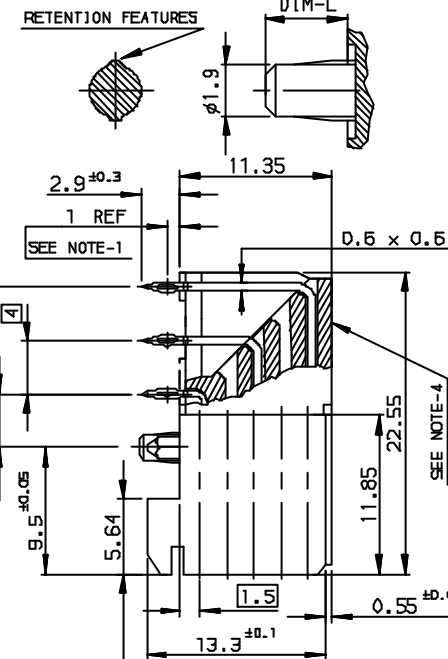
DETAIL-A



SECTION-FF



DETAIL OF PRESS-IN PEGS



TIN LEAD PART NUMBER

Part Number: HM1F53FDPA78H6P

LEAD-FREE PART NUMBER

Part Number: HM1F53FDPA78H6PLF

GENERAL CHARACTERISTICS AND ROHS INFORMATIONS:

SEE DRAWING C-8626-000P

European Views

SPECIFIC DATA: SELECTIVE CONTACTS LOADING

- 12 CTS IN A1-A3-A5-A7-....
- 12 CTS IN C1-C3-C5-C7-....
- 12 CTS IN E1-E3-E5-E7-....

NOTE-1: "EYE OF THE NEEDLE" PRESS-FIT PIN TYPE

NOTE-2: PLUG FOR CODING KEY FIXING

NOTE-3: P.C.B HOLES DEFINITION, SEE DRAWING REF C01-8626-000P

NOTE-4: INSERTION TOOLING ON PCB, SEE DRAWING REF C-8626-1003

NOTE-5: PERFORMANCE LEVEL = PL1 OF IEC-488/424/CDV SPECIFICATION

REDUCED SCALE SHEET

REV	REV NO	DATE	DATA
A	-	ETI	1998/08/12
B	L505-004	MLE	2005/02/11
C	L505-005	LGO	2006/07/14
-	-	-	-
-	-	-	-
-	-	-	-

www.fciconnect.com		surface [50 1302] ✓	tolerance std [50 406] [50 1101]	projection [50 1101]	mm
Dr ETIEMBRE 1999/08/12		TOLERANCES UNLESS OTHERWISE SPECIFIED		size A3	Scale 2.5
Eng LENOIR 1999/08/12		ANGULAR	LINEAR	0.X ±0.1	ECN L506-0095
Chr LEGARE 1999/08/12		0.XX ±0.1	0.XXX ±0.1	Spec ref -	
Appr LEGARE 1999/08/12		Product family		METRAL	
FCI		HM1 FEMALE RA PRESS-FIT -36 CTS		C-8626-0980	
title		SPECIFIC FOR ALCATEL USA		C	
catalog no		-		CUSTOMER sheet 1 of 1	

Mouser Electronics

Authorized Distributor

Click to View Pricing, Inventory, Delivery & Lifecycle Information:

[FCI / Amphenol:](#)

[HM1F53FDPA78H6PLF](#)