

8

7

6

5

4

3

2

1

used for: D-SUB COMBINATION

F

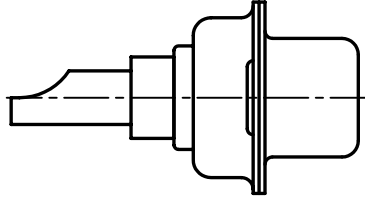
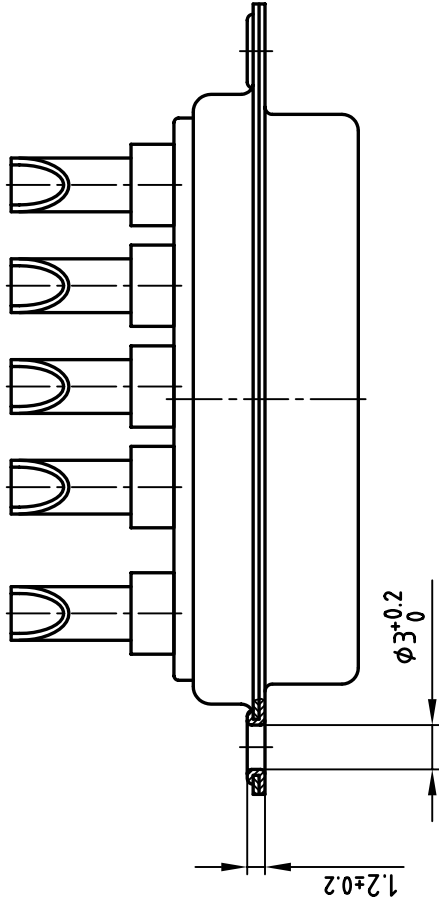
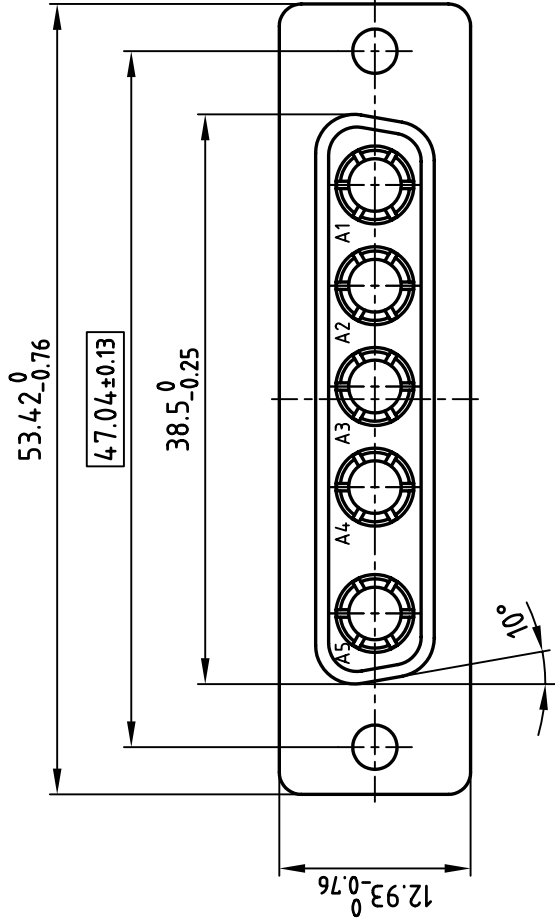
E

D

C

B

A



F

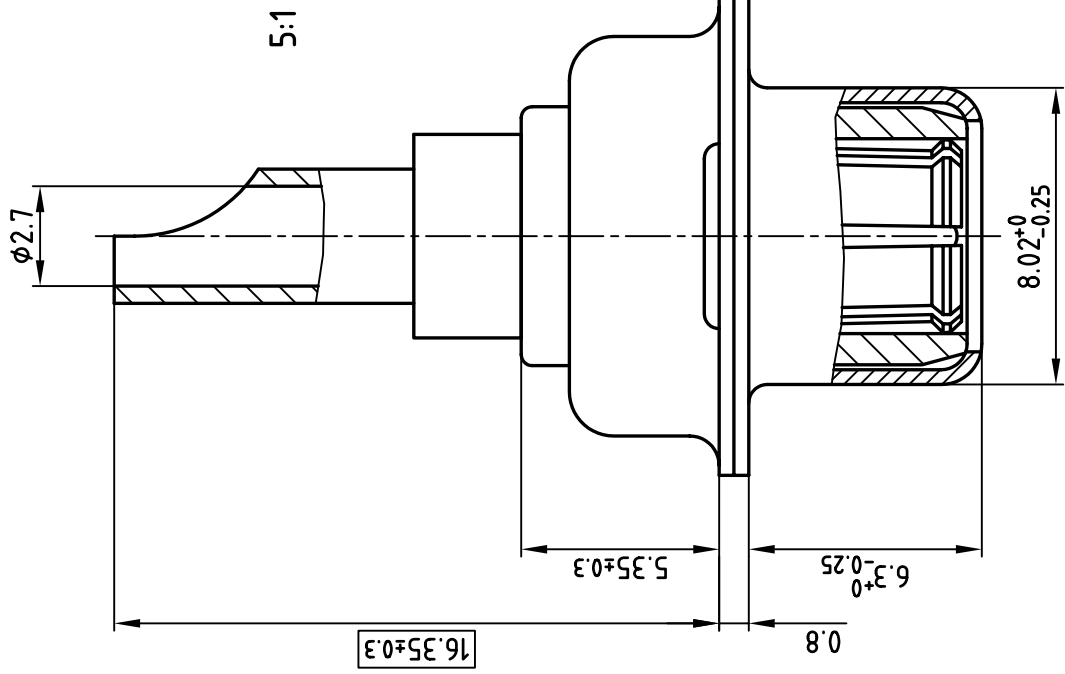
E

D

C

B

A



NOTES:

1. METALSHELLS: STEEL; min. 320µ" TIN
2. INSULATORS: PBT GF UL 94 V-0, GREEN
3. HIGH POWER CONTACTS 20A: COPPER ALLOY
4. PLATING: min. 30µ" HARD GOLD OVER min. 50µ" NICKEL
5. SOLDER CUP ACCEPTS CABLE AWG 12-14
6. = CRITICAL DIMENSION: SPC



THIS DRAWING MAY NOT BE COPIED OR REPRODUCED IN ANY WAY, AND MAY NOT BE PASSED ON TO A THIRD PARTY WITHOUT WRITTEN PERMISSION.
OWNERSHIP AND COPYRIGHT OF CONEC GMBH DO NOT ALTER CAD DRAWING BY HAND

rev.	description	date	name

tolerance		date	name
		2001	
		drawn	Parei
		appd.	Schrader
		norm	
		d-old	



scale: 2:1 (5:1)	material: SEE NOTES	title: D-SUB COMBINATION FEMALE 5W5S
dwg no: 13K1A413A	AutoCAD 2000	DIN-A 3
part no: 3005W5SXX42A10X		

Mouser Electronics

Authorized Distributor

Click to View Pricing, Inventory, Delivery & Lifecycle Information:

[Amphenol:](#)

[3005W5SXX42A10X](#)