

4

3

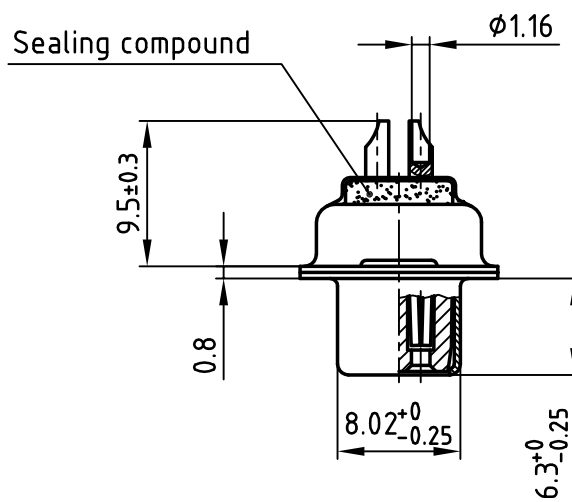
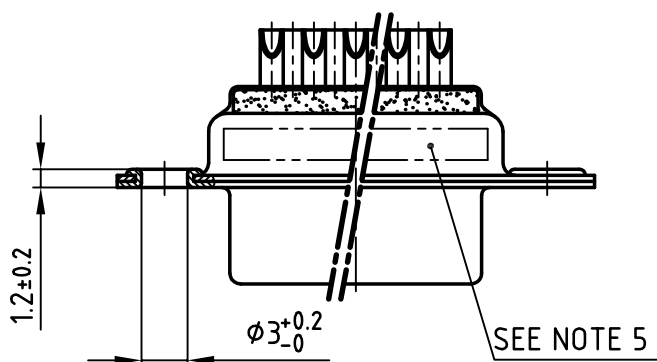
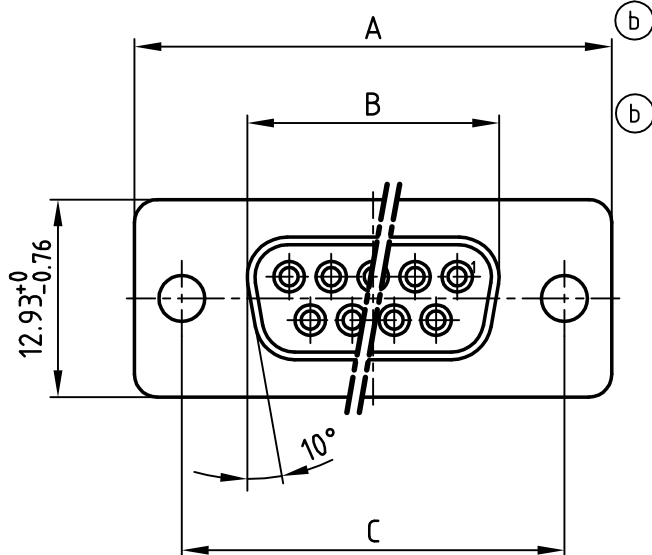
2

1

used for:

D-SUB

POS.	A $-0.76$	B $-0.25$	C	PART-NO.
9	31.19	16.46	25.00 $+0.12$ $-0.13$	4STD09SCM99A10X
15	39.52	24.79	33.30 $+0.15$ $-0.1$	4STD15SCM99A10X
25	53.42	38.50	47.04 $\pm 0.13$	4STD25SCM99A10X
37	69.70	54.96	63.50 $\pm 0.13$	4STD37SCM99A10X



Directive 2002/95/EC  
"RoHS"  
Compliant

### (b) NOTES:

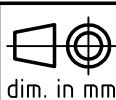
1. METALSHELLS: COPPER ALLOY; min. 320µin TIN
2. INSULATORS: PBT GF UL 94 V-0, BLACK
3. CONTACTS: COPPER ALLOY  
SOLDER CUP ACCEPTS CABLE AWG 20
4. PLATING: min. 30µin HARD GOLD OVER min. 50µin NICKEL
5. CONNECTOR IS PART MARKED: PART-NO. CONEC ABC

APPROVAL # FREIGABE # DEBLOCAGE # AUTORIZACION # APPROVAL	
CUSTOMER APPROVAL DATE:	
NAME:	TITLE:
COMPANY NAME:	
APPROVAL # FREIGABE # DEBLOCAGE # AUTORIZACION # APPROVAL	

THIS DRAWING MAY NOT BE COPIED OR  
REPRODUCED IN ANY WAY, AND MAY NOT  
BE PASSED ON TO A THIRD PARTY WITHOUT  
WRITTEN PERMISSION.  
OWNERSHIP AND COPYRIGHT OF CONEC GmbH  
DO NOT ALTER CAD DRAWING BY HAND

				1999	date	name
				drawn	26.04.	Barcinski
				appd.	26.04.	Mickenbecker
				norm	DIN 41652	
				d-old		
3 x b	Ä 3045	25.06.2008	Petker			
a	Origin					
rev.	description	date	name			

tolerance



dim. in mm

scale:

2:1

material:

SEE NOTES

title:

**D-SUB FEMALE**  
SOLDER CUP 9-37pos.  
for watertight hood

dwg no:

AutoCAD 2000

DIN-A

18K11B2A

4

sh: 1/1

part no:

SEE TABLE

**CONEC**<sup>®</sup>

4

3

2

1

# Mouser Electronics

Authorized Distributor

Click to View Pricing, Inventory, Delivery & Lifecycle Information:

[Amphenol:](#)

[4STD25SCM99A10X](#)