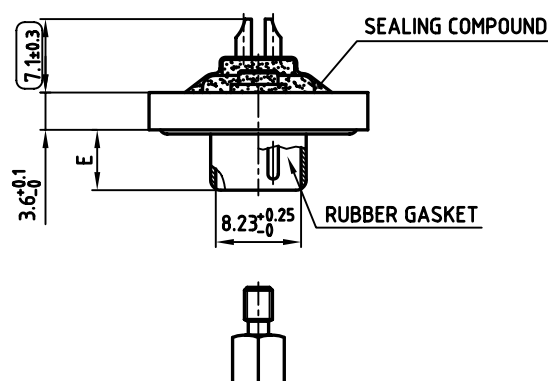
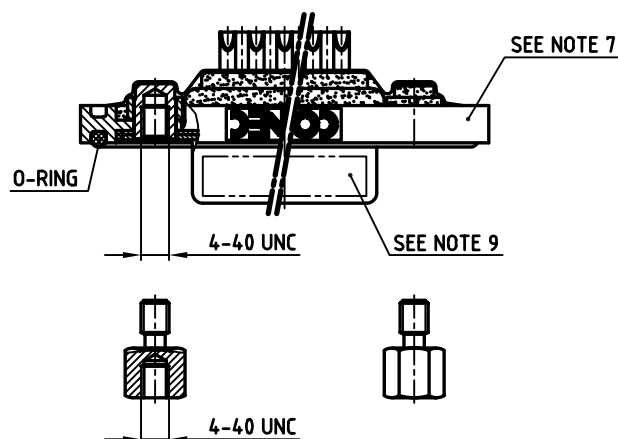
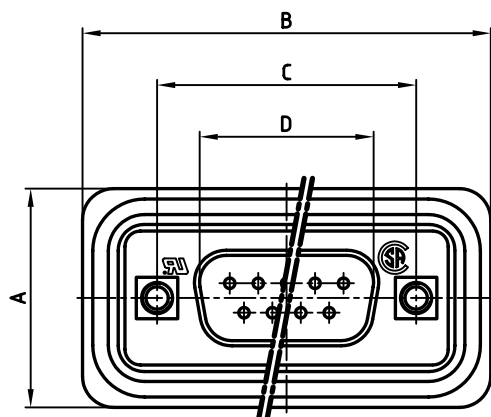


AT ALL TIMES WATER RESISTANT CONNECTORS NOT IN USE SHOULD BE COVERED WITH A CONEC WATER RESISTANT CAP OR WATER TIGHT HOOD.

used for: D-SUB

POS.	A ^{+0.2}	B ^{+0.2}	C	D ^{+0.25}	E ^{-0.30}	Part-NO.
9	21.1	39.4	25.00 ^{+0.12} _{-0.13}	16.79	5.82	6STD09PCM99B30X
15	21.1	47.7	33.30 ^{+0.15} _{-0.1}	25.12	5.82	6STD15PCM99B30X
25	21.1	61.4	47.04 ^{+0.13}	38.84	5.69	6STD25PCM99B30X
37	21.1	77.9	63.50 ^{+0.13}	55.30	5.69	6STD37PCM99B30X



NOTES:

- METAL SHELLS: COPPER ALLOY; min. 320µ" TIN
- INSULATORS: PBT GF UL 94 V-0, BLACK
- CONTACTS: COPPER ALLOY
PLATING: 30µ" HARD GOLD OVER min. 50µ" NICKEL
SOLDER CUP ACCEPTS CABLE AWG 20
- THREADED INSERT: COPPER ALLOY; min. 200µ" TIN over 80µ" NICKEL
- COLLAR: COPPER ALLOY; min. 200µ" TIN over 80µ" NICKEL
- HEXLOCKING SCREW: STAINLESS STEEL
- FRAME: ZINC DIECAST; NICKEL PLATED
- MAXIMUM TORQUE VALUE FOR THREAD: 6" LBS
- CONNECTOR IS PART MARKED: PART-NO. CONEC ABC
- = CHECK DIMENSION

Directive 2002/95/EC
"RoHS"
Compliant

APPROVAL * FREIGABE * DEBLOCAGE * AUTORIZACION * APPROVAL	
CUSTOMER APPROVAL DATE:	
NAME:	TITLE:
COMPANY NAME:	
APPROVAL * FREIGABE * DEBLOCAGE * AUTORIZACION * APPROVAL	

THIS DRAWING MAY NOT BE COPIED OR REPRODUCED IN ANY WAY, AND MAY NOT BE PASSED ON TO A THIRD PARTY WITHOUT WRITTEN PERMISSION.
OWNERSHIP AND COPYRIGHT OF CONEC GmbH
DO NOT ALTER CAD DRAWING BY HAND

rev.	description	date	name

tolerance	dim. in mm
2005	date
drawn	25.07. Lehmenkühler
appd.	25.07. Mickenbecker
norm	DIN 41652
d-old	
CONEC	

scale:	2:1
material:	SEE NOTES
title:	
D-SUB MALE	
9-37pos. SOLDER CUP	
with threaded insert and hexlocking screw	
dwg no:	AutoCAD 2004 DIN-A
18K1A372	3
part no:	SEE TABLE
sh:	1/1

Mouser Electronics

Authorized Distributor

Click to View Pricing, Inventory, Delivery & Lifecycle Information:

[Amphenol:](#)

[6STD09PCM99B30X](#) [6STD15PCM99B30X](#)