

4

3

2

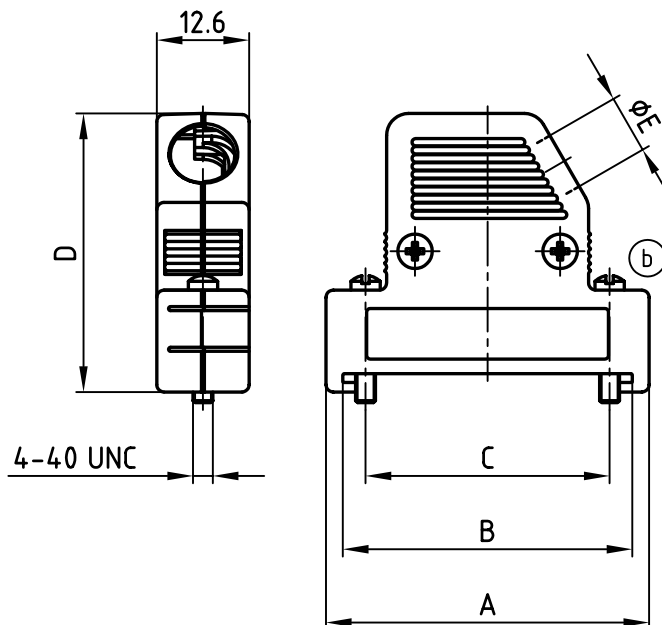
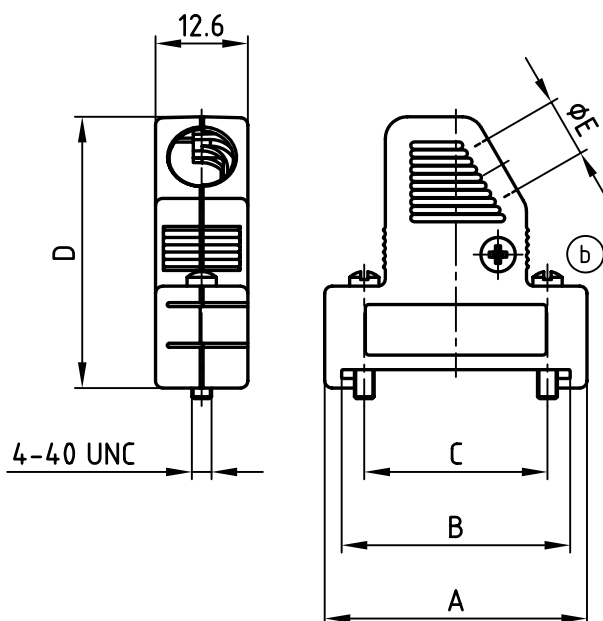
1

used for:

D-SUB

(b) 9pos.

(b) 15-37pos.



No. of pos.	A	B	C	D	ØE	Part NO.
9	35.8	31.2	25.0	37.0	8.0	165X16459X
15	44.1	39.5	33.3	38.0	8.0	165X16469X
25	57.9	53.3	47.1	41.0	9.0	165X16479X
37	74.3	69.7	63.5	41.0	9.0	165X16489X

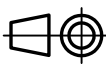

Directive 2002/95/EC
„RoHS“
Compliant

APPROVAL * FREIGABE * DEBLOCAGE * AUTORIZACION * APPROVAL	
CUSTOMER APPROVAL DATE:	
NAME:	TITLE:
COMPANY NAME:	
APPROVAL * FREIGABE * DEBLOCAGE * AUTORIZACION * APPROVAL	

NOTES:

- HOOD: ABS UL 94 V-0; METALLIZED
- SCREWS: BRASS; NICKEL PLATED

THIS DRAWING MAY NOT BE COPIED OR
REPRODUCED IN ANY WAY, AND MAY NOT
BE PASSED ON TO A THIRD PARTY WITHOUT
WRITTEN PERMISSION.
OWNERSHIP AND COPYRIGHT OF CONEC GmbH
DO NOT ALTER CAD DRAWING BY HAND

				tolerance		 dim. in mm
				2001	date	name
				drawn	05.12.	Parei
				appd.	05.12.	E. Mickenbecker
				norm		
				d-old		
4 x b	Ä 2835	10.10.07	Lehmen			
a	Origin					
rev.	description	date	name			

CONEC®



scale: 1:1
material: SEE NOTES

title:
PLASTIC HOOD
9-37pos. SIDE CABLE EXIT
flat mounting type

dwg no: AutoCAD 2006 DIN-A
16K1A393A 4
sh: 1/1

part no: SEE TABLE

4

3

2

1

Mouser Electronics

Authorized Distributor

Click to View Pricing, Inventory, Delivery & Lifecycle Information:

[Amphenol:](#)

[165X16459X](#) [165X16469X](#) [165X16479X](#)