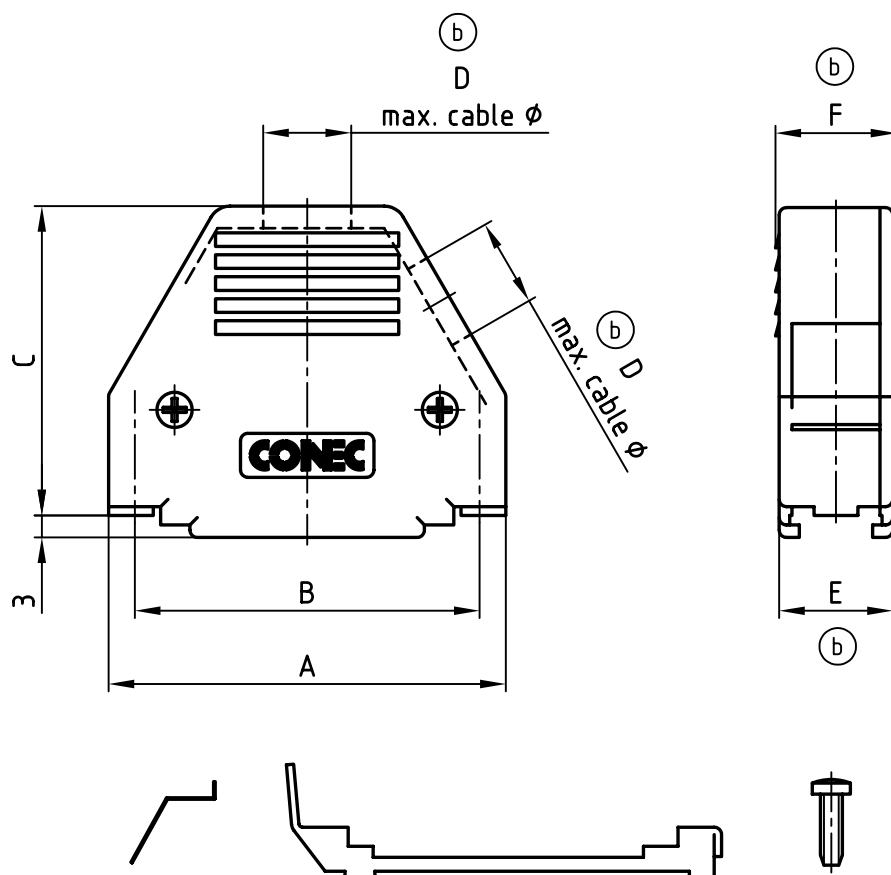
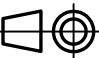



4 3 2 1 used for: D-SUB



POS.	A	B	C	D max. cable ø	E	F	Part No: Bulk package
9	32.0	25.0	36.7	6.3	15.5	16.5	165X11279X
15	40.0	33.3	38.2	8.0	15.5	16.5	165X11289X
25	54.2	47.0	42.2	10.5	15.5	16.5	165X11299X (165X11299X-S)
37	70.6	63.5	47.2	11.5	15.5	16.5	165X11309X
50	68.2	61.1	47.2	13.7	19.6	20.6	165X16549X

**MATERIAL:**  
HOOD: ABS UL 94 V-0; BLACK  
SLIDE LOCK: STEEL; NICKEL PLATED  
SPRING: STEEL; TIN PLATED

THIS DRAWING MAY NOT BE COPIED OR REPRODUCED IN ANY WAY, AND MAY NOT BE PASSED ON TO A THIRD PARTY WITHOUT WRITTEN PERMISSION. OWNERSHIP AND COPYRIGHT OF CONEC GmbH DO NOT ALTER CAD DRAWING BY HAND					tolerance			scale: 1:1	
								material: SEE NOTES	
					2000	date	name		title:  PLASTIC HOOD 9-50pos. with top and side cable exit with slide lock
					drawn	03.07.	A. Mickenbecker		
					appd.	03.07.	E. Mickenbecker		
					norm				
					d-old				
	6x b	Ä 2620	05.12.2006	ES					dwg no: AutoCAD 2000 DIN-A 4 sh: 1/1
	rev.	description	date	name					
				product no: SEE TABLE					

# Mouser Electronics

Authorized Distributor

Click to View Pricing, Inventory, Delivery & Lifecycle Information:

[Amphenol:](#)

[165X16549X](#)