

LC-FILTER D-SUB ADAPTER

Socket connector / Plug connector – Precision machined contacts – Full Metal



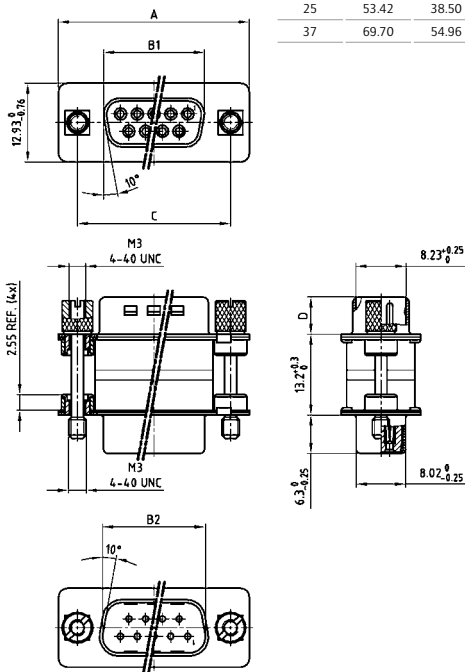
RoHS compliant – CSA listed, File No.: LR 115000-1 – UL listed, File No.: E202784

DESCRIPTION

- Mounting styles:
 - with 4-40 UNC or M3 jack screw
 - with 4-40 UNC or M3 hex bolt
- Quality class 3 (also available in quality class 1)
- Shell: Steel tin plated

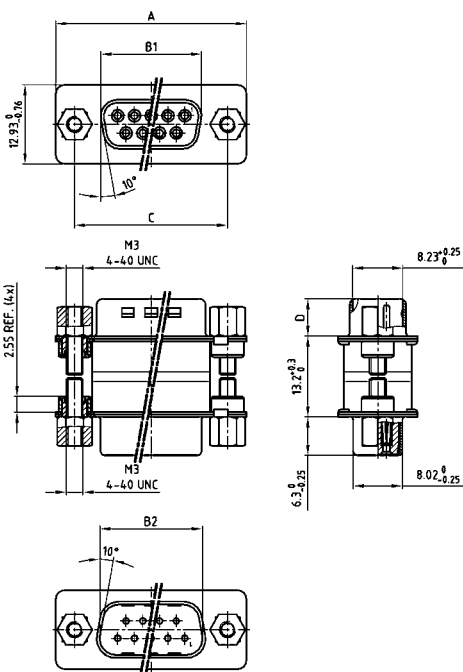
PRODUCT DRAWING

Version with jack screw



No. of pos.	A -0.76	B1 -0.25	B2 +0.25	C	D -0.3
09	31.19	16.46	16.79	25.00 +0.12 -0.13	6.10
15	39.52	24.79	25.12	33.30 +0.15 -0.10	6.12
25	53.42	38.50	38.84	47.04 ±0.13	5.99
37	69.70	54.96	55.30	63.50 ±0.13	5.99

Version with hex bolt



ORDER DATA

Capacitance 180 pF

SOCKET CONNECTOR / PLUG CONNECTOR WITH JACK SCREW			SOCKET CONNECTOR / PLUG CONNECTOR WITH HEX BOLT		
No. of pos.	Mounting style	Part Number	No. of pos.	Mounting style	Part Number
09	4-40 UNC Jack screw	243 A 12800 X	09	4-40 UNC Hex bolt	243 A 13440 X
15	4-40 UNC Jack screw	243 A 12810 X	15	4-40 UNC Hex bolt	243 A 13450 X
25	4-40 UNC Jack screw	243 A 12820 X	25	4-40 UNC Hex bolt	243 A 13460 X
37	4-40 UNC Jack screw	243 A 12830 X	37	4-40 UNC Hex bolt	243 A 13470 X
09	M3 Jack screw	243 A 12960 X	09	M3 Hex bolt	243 A 13600 X
15	M3 Jack screw	243 A 12970 X	15	M3 Hex bolt	243 A 13610 X
25	M3 Jack screw	243 A 12980 X	25	M3 Hex bolt	243 A 13620 X
37	M3 Jack screw	243 A 12990 X	37	M3 Hex bolt	243 A 13630 X

LC-FILTER D-SUB ADAPTER

Socket connector / Plug connector – Precision machined contacts – Full Metal

ORDER DATA

Capacitance 370 pF					
SOCKET CONNECTOR / PLUG CONNECTOR WITH JACK SCREW			SOCKET CONNECTOR / PLUG CONNECTOR WITH HEX BOLT		
No. of pos.	Mounting style	Part Number	No. of pos.	Mounting style	Part Number
09	4-40 UNC Jack screw	243 A 12840 X	09	4-40 UNC Hex bolt	243 A 13480 X
15	4-40 UNC Jack screw	243 A 12850 X	15	4-40 UNC Hex bolt	243 A 13490 X
25	4-40 UNC Jack screw	243 A 12860 X	25	4-40 UNC Hex bolt	243 A 13500 X
37	4-40 UNC Jack screw	243 A 12870 X	37	4-40 UNC Hex bolt	243 A 13510 X
09	M3 Jack screw	243 A 13000 X	09	M3 Hex bolt	243 A 13640 X
15	M3 Jack screw	243 A 13010 X	15	M3 Hex bolt	243 A 13650 X
25	M3 Jack screw	243 A 13020 X	25	M3 Hex bolt	243 A 13660 X
37	M3 Jack screw	243 A 13030 X	37	M3 Hex bolt	243 A 13670 X

Capacitance 830 pF					
SOCKET CONNECTOR / PLUG CONNECTOR WITH JACK SCREW			SOCKET CONNECTOR / PLUG CONNECTOR WITH HEX BOLT		
No. of pos.	Mounting style	Part Number	No. of pos.	Mounting style	Part Number
09	4-40 UNC Jack screw	243 A 12880 X	09	4-40 UNC Hex bolt	243 A 13520 X
15	4-40 UNC Jack screw	243 A 12890 X	15	4-40 UNC Hex bolt	243 A 13530 X
25	4-40 UNC Jack screw	243 A 12900 X	25	4-40 UNC Hex bolt	243 A 13540 X
37	4-40 UNC Jack screw	243 A 12910 X	37	4-40 UNC Hex bolt	243 A 13550 X
09	M3 Jack screw	243 A 13040 X	09	M3 Hex bolt	243 A 13680 X
15	M3 Jack screw	243 A 13050 X	15	M3 Hex bolt	243 A 13690 X
25	M3 Jack screw	243 A 13060 X	25	M3 Hex bolt	243 A 13700 X
37	M3 Jack screw	243 A 13070 X	37	M3 Hex bolt	243 A 13710 X

Capacitance 1300 pF					
SOCKET CONNECTOR / PLUG CONNECTOR WITH JACK SCREW			SOCKET CONNECTOR / PLUG CONNECTOR WITH HEX BOLT		
No. of pos.	Mounting style	Part Number	No. of pos.	Mounting style	Part Number
09	4-40 UNC Jack screw	243 A 12920 X	09	4-40 UNC Hex bolt	243 A 13560 X
15	4-40 UNC Jack screw	243 A 12930 X	15	4-40 UNC Hex bolt	243 A 13570 X
25	4-40 UNC Jack screw	243 A 12940 X	25	4-40 UNC Hex bolt	243 A 13580 X
37	4-40 UNC Jack screw	243 A 12950 X	37	4-40 UNC Hex bolt	243 A 13590 X
09	M3 Jack screw	243 A 13080 X	09	M3 Hex bolt	243 A 13720 X
15	M3 Jack screw	243 A 13090 X	15	M3 Hex bolt	243 A 13730 X
25	M3 Jack screw	243 A 13100 X	25	M3 Hex bolt	243 A 13740 X
37	M3 Jack screw	243 A 13110 X	37	M3 Hex bolt	243 A 13750 X

Mouser Electronics

Authorized Distributor

Click to View Pricing, Inventory, Delivery & Lifecycle Information:

Amphenol:

<u>243A13580X</u>	<u>243A13050X</u>	<u>243A13630X</u>	<u>243A12800X</u>	<u>243A12810X</u>	<u>243A12880X</u>	<u>243A12890X</u>	<u>243A12960X</u>
<u>243A13470X</u>	<u>243A13480X</u>	<u>243A13560X</u>	<u>243A13640X</u>	<u>243A12830X</u>	<u>243A12900X</u>	<u>243A13070X</u>	<u>243A13740X</u>
<u>243A13000X</u>	<u>243A13010X</u>	<u>243A13090X</u>	<u>243A13100X</u>	<u>243A13510X</u>	<u>243A13520X</u>	<u>243A12860X</u>	<u>243A12940X</u>
<u>243A12950X</u>	<u>243A13040X</u>	<u>243A13610X</u>	<u>243A13620X</u>	<u>243A13690X</u>	<u>243A12970X</u>	<u>243A13460X</u>	<u>243A13550X</u>
<u>243A13720X</u>	<u>243A13730X</u>	<u>243A12870X</u>	<u>243A13530X</u>	<u>243A13700X</u>	<u>243A13600X</u>	<u>243A13030X</u>	<u>243A13110X</u>
<u>243A13440X</u>	<u>243A13540X</u>	<u>243A13710X</u>	<u>243A12910X</u>	<u>243A13080X</u>	<u>243A13490X</u>	<u>243A13570X</u>	<u>243A12840X</u>
<u>243A12850X</u>	<u>243A12920X</u>	<u>243A12930X</u>	<u>243A13590X</u>	<u>243A13680X</u>	<u>243A12820X</u>	<u>243A12980X</u>	<u>243A12990X</u>
<u>243A13500X</u>	<u>243A13650X</u>	<u>243A13660X</u>					