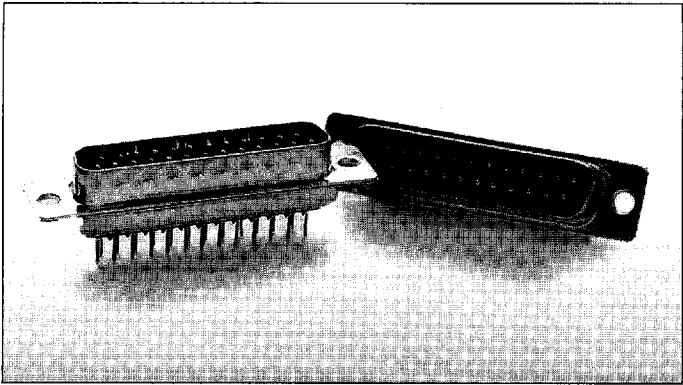
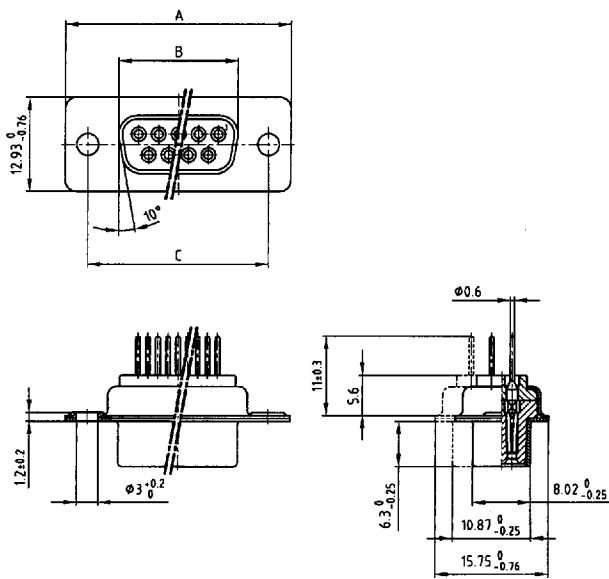


D-Subminiature connectors



Solder pin straight

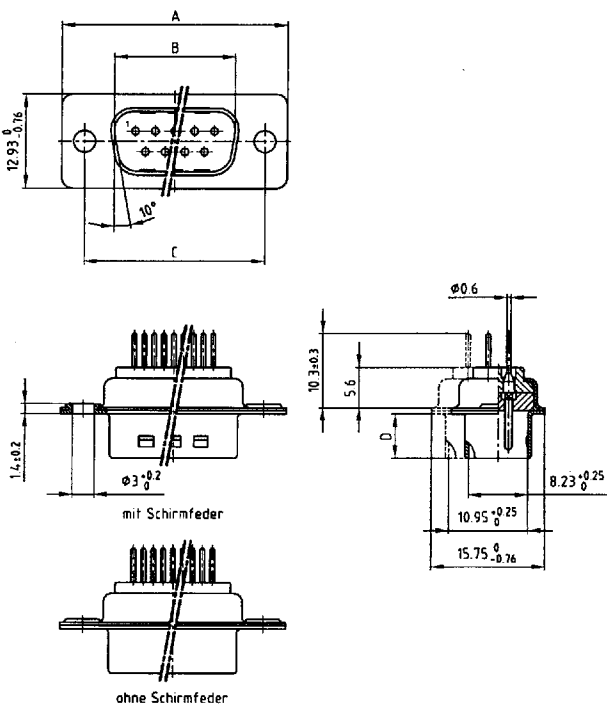
Socket connector



Kat 1 | F6A

No. of pos.	A - 0,76	B - 0,25	C
9	31,19	16,46	25,00 $\pm 0,12$
15	39,52	24,79	33,30 $\pm 0,15$
25	53,42	38,50	47,04 $\pm 0,13$
37	69,70	54,96	63,50 $\pm 0,13$
50	67,31	52,55	61,10 $\pm 0,14$

Plug connector



Kat 1 | F7A

No. of pos.	A - 0,76	B ± 0,25	C	D - 0,30
9	31,19	16,79	25,00 $\pm 0,12$	6,12
15	39,52	25,12	33,30 $\pm 0,15$	6,12
25	53,42	38,84	47,04 $\pm 0,13$	5,99
37	69,70	55,30	63,50 $\pm 0,13$	5,99
50	67,31	52,68	61,10 $\pm 0,14$	5,99

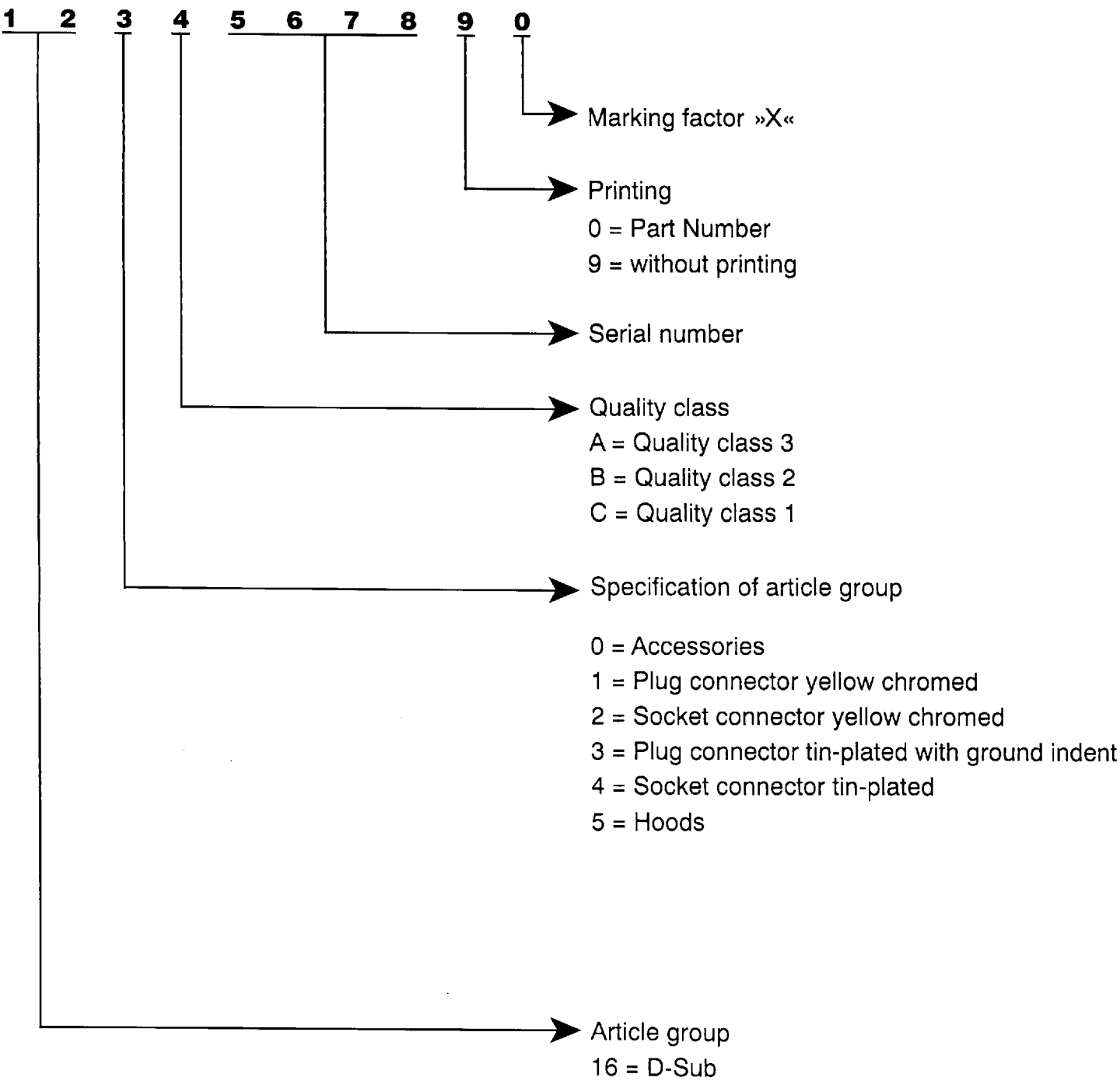
Part numbers

No. of Pos.	Socket connector – solder pin straight	
	yellow zinc	tin-plated
9	CDF 09 P 162 A 10069 X	CDF 09 PSN 164 A 10069 X
15	CDF 15 P 162 A 10079 X	CDF 15 PSN 164 A 10079 X
25	CDF 25 P 162 A 10089 X	CDF 25 PSN 164 A 10089 X
37	CDF 37 P 162 A 10099 X	CDF 37 PSN 164 A 10099 X
50	CDF 50 P 162 A 10109 X	CDF 50 PSN 164 A 10109 X

No. of Pos.	Plug connector – solder pin straight	
	yellow zinc without ground indent	tin-plated with ground indent
9	CDS 09 P 161 A 10069 X	CDS 09 PFSN 163 A 11119 X
15	CDS 15 P 161 A 10079 X	CDS 15 PFSN 163 A 11129 X
25	CDS 25 P 161 A 10089 X	CDS 25 PFSN 163 A 11139 X
37	CDS 37 P 161 A 10099 X	CDS 37 PFSN 163 A 11149 X
50	CDS 50 P 161 A 10109 X	CDS 50 PFSN 163 A 11159 X



Part Number



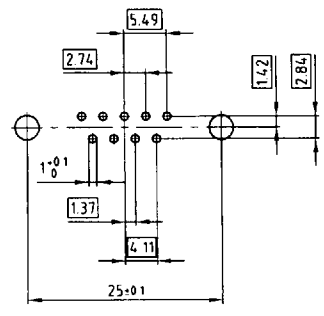
Order example

Plug connector Solder bucket 25 pos. without printing			
Quality class		Part Number	
3		CDS 25 L	161 A 10039 X
2		CDS 25 L	161 B 10039 X
1		CDS 25 L	161 C 10039 X

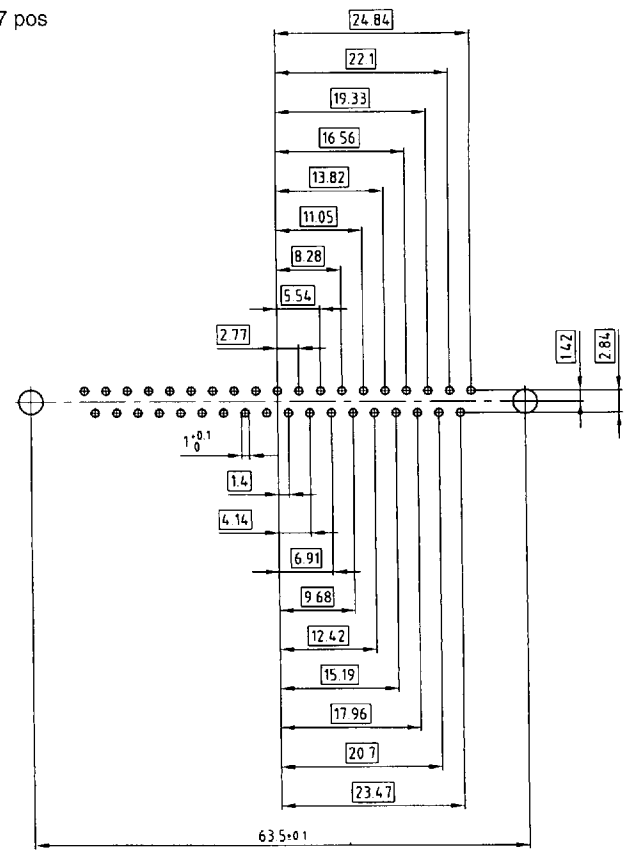
D-Subminiature connectors

Hole pattern for straight and angled solder pins D-Sub standard

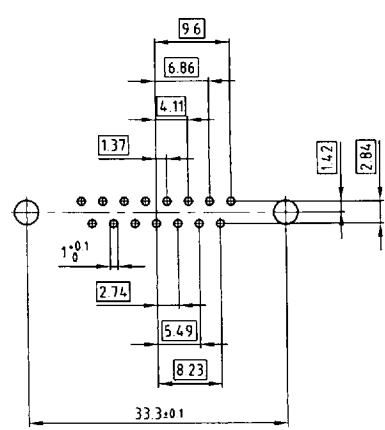
9 pos



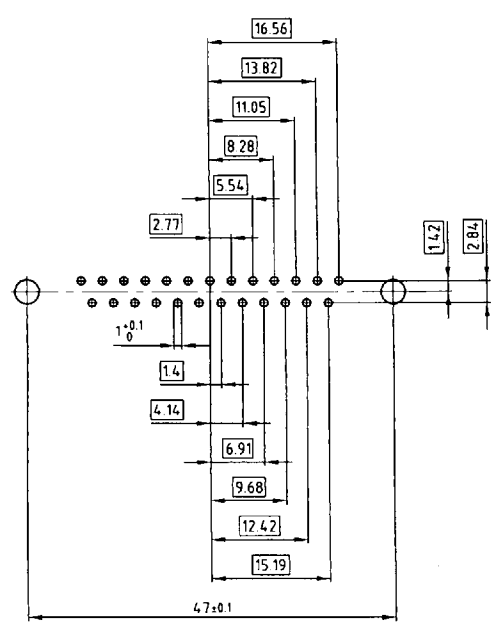
37 pos



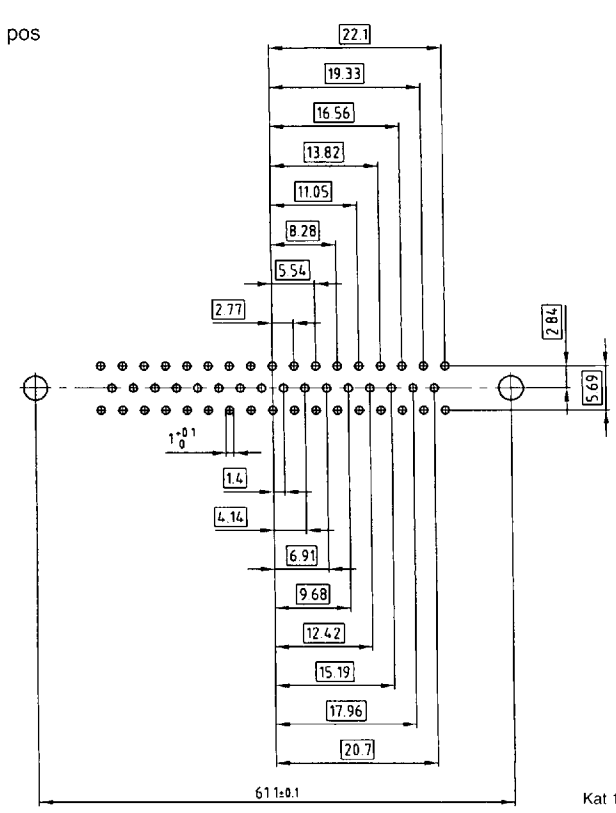
15 pos



25 pos



50 pos



Kat 1 i U3A

Kat 1 i U4A

Technical Data	D-Sub Standard	D-Sub High Density
Initial contact resistance	≤ 10 mΩ	≤ 10 mΩ
Initial insulation resistance	Quality class 1 ≥ 5GΩ Quality class 2 ≥ 5GΩ Quality class 3 ≥ 5GΩ	Quality class 1 ≥ 5GΩ Quality class 2 ≥ 5GΩ Quality class 3 ≥ 5GΩ
Clearance distance	contact–contact ≥ 1.0 mm contact–ground ≥ 1.2 mm	≥ 0.6 mm
Creepage distance	contact–contact ≥ 1.0 mm contact–ground ≥ 1.2 mm	≥ 0.6 mm
Test voltage V. r. m. s./NM	1000 V	1000 V
Working voltage/Insulation group* * nach SEV 50 V – acc. to SEV 50 V	125 V ≈	60 V ≈
Working current 20° C	5 A max.	25 A max.
Operating temperature	- 55° C – + 125° C	- 55° C – + 125° C
Moulding material	Polyester GF UL 94 V-O	PA 6.6 GF 25 UL 94 V-O
Contact material	Copper alloy	Copper alloy
Contact finish	hard-gold-plated over nickel	hard-gold-plated over nickel
Shell	Sheet steel, zinc lined and yellow chromate Sheet steel, nickel underneath and tin-plated	Sheet steel, nickel underneath and tin-plated
Insertion and withdrawal froces	9-polig/way 30 N 15-polig/way 50 N 25-polig/way 83 N 37-polig/way 123 N 50-polig/way 167 N	15-polig/way 50 N 26-polig/way 84 N 44-polig/way 120 N 62-polig/way 170 N 78-polig/way 200 N
Quality classes	Quality class 1 Quality class 2 Quality class 3	500 mating cycles 200 mating cycles 50 mating cycles

Mouser Electronics

Authorized Distributor

Click to View Pricing, Inventory, Delivery & Lifecycle Information:

[Amphenol:](#)

[161A10089X](#) [162A10069X](#) [162A10089X](#) [162A10109X](#) [161A10099X](#) [161A10109X](#) [162A10099X](#) [161A10069X](#)
[161A10079X](#)