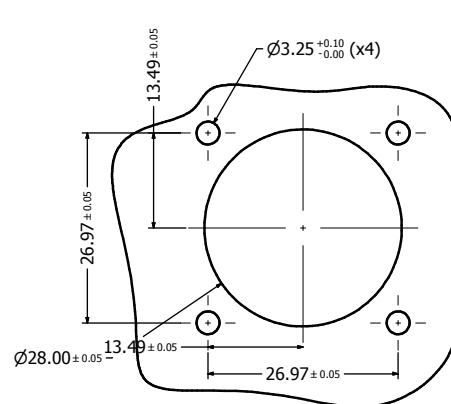
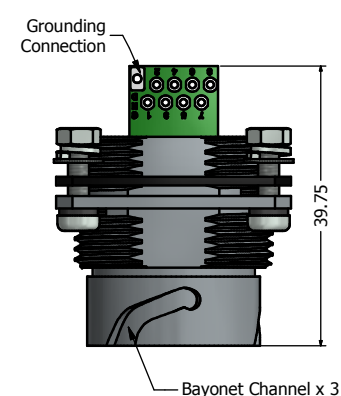


Recommended Double-D Panel Cutout



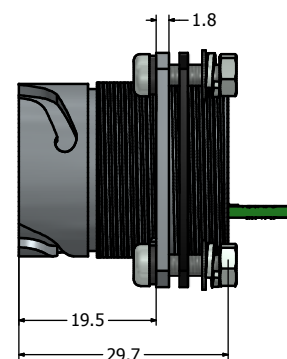
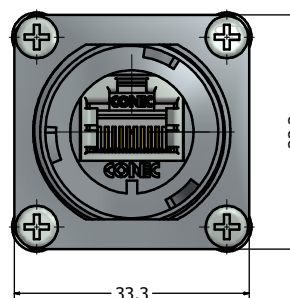
Recommended Round Panel Cutout



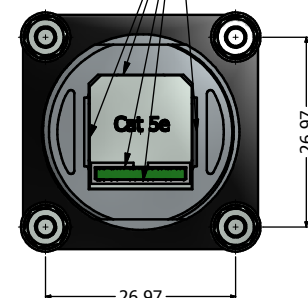
Notes:

- Electrical Specifications:
 - Meets EIA/TIA-568-B.2 Cat.5e Specification
 - Contact Resistance: 20 mOhm max.
 - Insulation Resistance: 500MOhm min. @ 100 VDC
 - Current Rating: 1.2A max. at 25°C
 - Working Voltage: 100 VDC
 - DWV: 1000 VDC/60s Contact to Contact, 1500 VDC/60s Contact to Metal Shell
 - Operating Temperature: -40°C to +85°C
- Material and Finish:
 - Receptacle Housing (with Flange): Zinc Die-Cast, Finish: Nickel Plated
 - RJ45 PCB Jack Metal Shell: Copper Alloy, Nickel Plated
 - RJ45 PCB Jack Plastic Housing: Glass filled PBT UL94 V-0, Color: Black
 - RJ45 PCB Jack Contacts: Phosphor Bronze, Finish: 50u" Gold min. over Nickel
 - PCB: FR-4
 - Panel Gasket: NBR, Color: Black
 - M3 Mounting Hardware: Stainless Steel
 - Includes 4 x (Screw + Nut + Flat Washer + Spring Lock Washer)
- Connector can be front or rear mounted to a maximum panel thickness of 3.2mm.
- IP67 rated when covered or fully mated with the appropriate mating connector
- Hardware shipped unassembled

- b. Recommended M3 screw mounting torque: 8 to 10 lb-inch





Sealed with Sealing Compound, provides IP67 even when uncovered (For potted version only)



Directive 2002/95/EC RoHS Compliant

Description	Part Number
Nickel Plated Zinc Die-Cast with Cat5e RJ45 PCB Jack with Grounding Hole	17-111154
Potted Nickel Plated Zinc Die-Cast with Cat5e RJ45 Jack with Grounding Hole	17-111164

THIS DRAWING MAY NOT BE COPIED OR REPRODUCED IN ANY WAY, AND MAY NOT BE PASSED ON TO A THIRD PARTY WITHOUT WRITTEN PERMISSION. OWNERSHIP AND COPYRIGHT OF CONEC CORPORATION. DO NOT ALTER CAD DRAWING BY HAND	Customer:			Tolerance Unless otherwise specified 0 PLC ±0.30 1 PLC ±0.20 2 PLC ±0.10 3 PLC ±0.05 ANGLES ±1°		Scale:	Dim. in mm		
	Name	Title	Approval Date			Autodesk Inventor	Material: See Notes		
							Cat. 5e RJ45 PCB Jack Version-II		
							Receptacle (with Flange) Assembly Kit		
							Nickel Plated Zinc Die-Cast Version		
							Drawing No.: 17K1A383		
							Part No.: SEE PART NUMBER TABLE		
	b	1 x b	Mar/07/2013				Vincent Ke		DIN A3
	a	original							Sheet 1/1
	Rev.	Changes	Date				Name		

Mouser Electronics

Authorized Distributor

Click to View Pricing, Inventory, Delivery & Lifecycle Information:

[Amphenol:](#)

[17-111154](#) [17-111164](#)