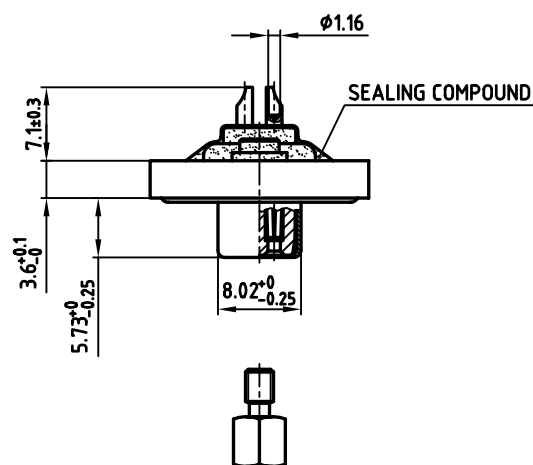
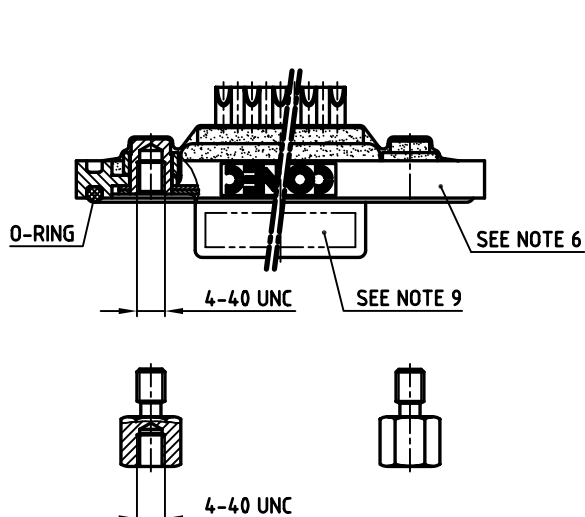
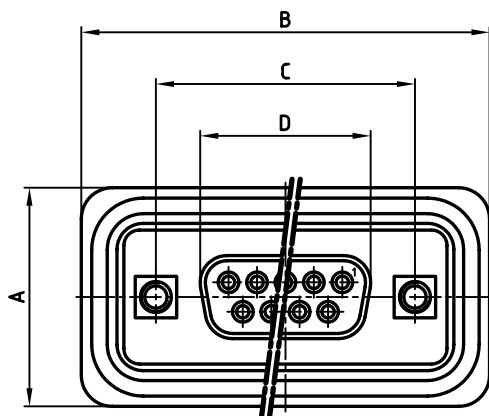


used for: D-SUB

AT ALL TIMES WATER RESISTANT CONNECTORS NOT IN USE SHOULD BE COVERED WITH A CONEC WATER RESISTANT CAP OR WATER TIGHT HOOD.

No. of pos.	A ^{+0.2}	B ^{+0.2}	C	D ^{-0.25}	PART NO.
9	21.1	39.4	25.00 ^{+0.12} _{-0.13}	16.46	8STD09SAM99B30X
15	21.1	47.7	33.30 ^{+0.15} _{-0.1}	24.79	8STD15SAM99B30X
25	21.1	61.4	47.04 ^{+0.13}	38.50	8STD25SAM99B30X
37	21.1	77.9	63.50 ^{+0.13}	54.96	8STD37SAM99B30X

**NOTES:**

- METALSHELLS: STAINLESS STEEL
- INSULATORS: PBT GF UL 94 V-0, BLACK
- CONTACTS: COPPER ALLOY
PLATING: 8pin HARD GOLD over min. 50pin NICKEL
SOLDER CUP ACCEPTS CABLE AWG 20
- THREADED INSERT: COPPER ALLOY; min. 200pin TIN over 80pin NICKEL
- COLLAR: COPPER ALLOY; min. 200pin TIN over 80pin NICKEL
- FRAME: ZINC DIECAST; NICKEL PLATED
- HEXLOCKING SCREW: STAINLESS STEEL
- RECOMMENDED TORQUE FOR MOUNTING SCREW 35N cm (3.1 in.LB) / max. 40N cm (3.5 in.LB)
- CONNECTOR IS PART MARKED: **PART-NO. CONEC ABC**

Directive 2002/95 EC
"RoHS"
Compliant

APPROVAL # FREIGABE # DEBLOCAGE # AUTOR/ZACON # APPROVAL	
CUSTOMER APPROVAL DATE:	
NAME:	TITLE:
COMPANY NAME:	
APPROVAL # FREIGABE # DEBLOCAGE # AUTOR/ZACON # APPROVAL	

THIS DRAWING MAY NOT BE COPIED OR REPRODUCED IN ANY WAY, AND MAY NOT BE PASSED ON TO A THIRD PARTY WITHOUT WRITTEN PERMISSION.
OWNERSHIP AND COPYRIGHT OF CONEC GmbH
DO NOT ALTER CAD DRAWING BY HAND

rev.	description	date	name
a	Origin		

tolerance	date	name
2007	08.10.	Lehmenkühler
drawn	08.10.	Mickenbecker
appd.		
norm		DIN 41652
d-old		

scale:	2:1
material:	SEE NOTES
title:	
D-SUB FEMALE 9-37pos. SOLDER CUP with threaded insert and hexlocking screw	
dwg no:	AutoCAD 2006 DIN-A
18K1A654	3
part no:	SEE TABLE
sh: 1/1	

Mouser Electronics

Authorized Distributor

Click to View Pricing, Inventory, Delivery & Lifecycle Information:

[Amphenol:](#)

[8STD15SAM99B30X](#) [8STD09SAM99B30X](#)