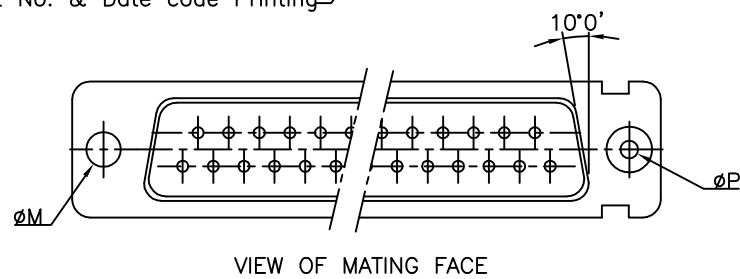


Part No. & Date code Printing



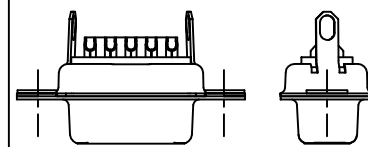
ORDERING INFORMATION

SERIES	D B P V 25 P O 64 C T X XXX LF	LEAD FREE
SHELL SIZE	E, A, B, C, D	APPLICABLE ONLY FOR DP SERIES
CHARACTERISATION	M-DM SERIES P-DP SERIES	SPECIAL CODE
OPTIONS	BLANK-STANDARD F-FLOAT MOUNTING L-CLINCH NUT (M3) O-CLINCH NUT (UNC) V-FEM. SCREW LOCK HEX. (UNC) N-THR FEM. SCREW LOCK M3	DIMPLES - OPTIONAL X-ON MALE DP CONNECTORS ONLY
NO.OF CONTACTS	09, 15, 25, 37, 50	SHELL PLATING
CONTACTS	P - PIN S - SOCKET	BLANK-ZINC for DP/CADMIUM for DM T-STD (Only for DP). TIN over Cu or Zinc Cr 3
TERMINATION TYPE	O-SOLDER BUCKET	OPTIONS
		BLANK-STANDARD H-SHIELDING TERMINATION FINGERS (Only for DP) N- OBLIGATORY FOR DM
		CONTACT PLATING
		64 - 200 MATING CYCLES 65 - 500 MATING CYCLES 32 - 1.27µ Au

"This LF product meets European Union Directives and other country regulations as described in GS-47-0004"

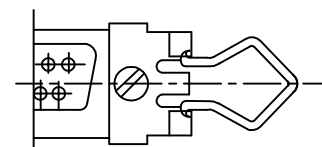
Packaging as per GS-14-920

WITH SHIELDING TERMINATION FINGERS



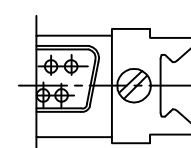
OPTION: H

MALE LEVER LOCK



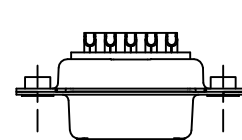
ORD CODE 8630-3427(EABC)
,, 8630-3428(D)

FEMALE LEVER LOCK



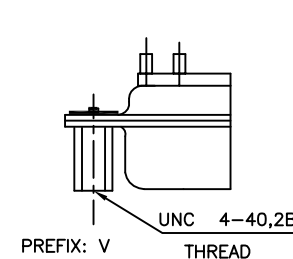
ORD CODE 8630-3425(EABC)
,, 8630-3426(D)

CLINCH NUT



PREFIX:
O - UNC4-40
L - M3

RIVETTED FEMALE SCREW LOCK



PREFIX: V

50	P	66.65	52.68	61.11	11.08	14.99	11.09	5.85	55.07	13.31	1.50	1.0	3.10	3.05	2.20	2.76
	S	66.65	52.30	61.11	10.62	14.99	11.21	6.05	55.07	13.31	1.10	0.8	3.10	2.85	2.20	2.76
37	P	68.94	55.30	63.50	8.23	12.17	11.09	5.85	57.45	10.46	1.50	1.0	3.10	3.05	2.20	2.76
	S	68.94	54.71	63.50	7.77	12.17	11.21	6.05	57.45	10.46	1.10	0.8	3.10	2.85	2.20	2.76
25	P	52.65	38.84	47.04	8.23	12.17	11.07	5.85	41.02	10.46	1.10	0.8	3.10	2.85	2.20	2.76
	S	52.65	38.25	47.04	7.77	12.17	11.21	6.05	41.02	10.46	1.10	0.8	3.10	2.85	2.20	2.76
15	P	38.76	25.12	33.32	8.23	12.17	10.99	5.85	27.25	10.46	1.10	0.8	3.10	2.85	2.20	2.74
	S	38.76	24.54	33.32	7.77	12.17	11.21	6.05	27.25	10.46	1.10	0.8	3.10	2.85	2.20	2.74
09	P	30.43	16.79	24.99	8.23	12.17	10.99	5.85	19.02	10.46	1.10	0.8	3.10	2.85	2.20	2.74
	S	30.43	16.21	24.99	7.77	12.17	11.21	6.05	19.02	10.46	1.10	0.8	3.10	2.85	2.20	2.74
SHELL SIZE		A-0	B-0	C	D-0	E-0	F	G-0	H-0	J-0	K	L-0	M-0.1	N	P	Q
		+0.76	+0.25	±0.12	+0.25	+0.76	MAX	+0.15	+0.51	+0.51	±0.20	+0.22	+0.08	MAX.	+0.10	±0.06

NOTE:-INSIDE DIMENSIONS OF MALE AND OUTSIDE DIMENSIONS OF THE FEMALE CONNECTOR.

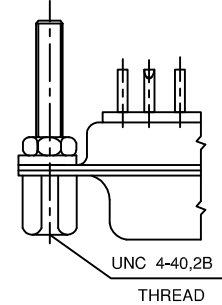
FEMALE SCREW LOCK

EXTERNAL THREAD

INTERNAL THREAD

8630-01	M3	M3
8630-01A	M3	4-40 UNC 2
8630-01B	4-40 UNC 2A	4-40 UNC 2B
ORD-CODE	EXTERNAL THREAD	INTERNAL THREAD

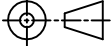
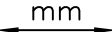

FEMALE SCREW LOCK EXTEND TYPE



ORD CODE 8630-01-061

TECHNICAL SPECIFICATIONS

SHELLS	: TIN/CADMIUM/ZINC PLATED STEEL
INSULATOR MATERIAL	: SELF EXTINGUISHING THERMOPLASTIC- TO UL CLASS 94 V0 HOUSING WILL WITHSTAND EXPOSURE TO 260-265°C IF USE PROTECTIVE ADHESIVE (type Kapton or Teflon) OR PROTECTIVE METALLIC DEVICE
CONTACT DIA ON ACTIVE AREA:	Ø1 MM.
CONTACTS MATERIAL	: COPPER ALLOY
CONTACT PLATING	: GXT / GOLD OVER NICKEL
OPERATING TEMPERATURE	: -55°C +125°C
OPERATING CURRENT	: 7.5 A PER CONTACT
CONTACT RESISTANCE	: ≤7.3 mΩ
INSULATION RESISTANCE	: ≥5000 MΩ
MAXIMUM VOLTAGE	: 1000 V.r.m.s
MECHANICAL ENDURANCE	: 500 MATINGS FOR CODE 65 & 32 : 200 MATINGS FOR CODE 64
DAMP HEAT	: 56 DAYS FOR CODE 65 & 32 : 21 DAYS FOR CODE 64

mat'l. code SEE NOTES				surface ISO 1302 ✓		tolerance ISO 406 ISO 1101		projection 		product family D-SUB																																																																																																																																																																																																																																																																																																																																																																																																																																																																																																																																																																																																																																																																																																																																																																																																																																																																																																																																																																																																																																																																																																																																																																																													
ltr	ecn no	dr	date	tolerances unless otherwise specified							title D-SUB S/B CONNECTOR (DP&DM SERIES WITH ASSEMBLY OPTIONS)																																																																																																																																																																																																																																																																																																																																																																																																																																																																																																																																																																																																																																																																																																																																																																																																																																																																																																																																																																																																																																																																																																																																																																																												
N	ELX-I-25321	GREGAR	2016-14-11	angles	linear	.00±0.25																																																																																																																																																																																																																																																																																																																																																																																																																																																																																																																																																																																																																																																																																																																																																																																																																																																																																																																																																																																																																																																																																																																																																																																																	
						.000±0.1																																																																																																																																																																																																																																																																																																																																																																																																																																																																																																																																																																																																																																																																																																																																																																																																																																																																																																																																																																																																																																																																																																																																																																																																	
				1'±x'							scale NTS																																																																																																																																																																																																																																																																																																																																																																																																																																																																																																																																																																																																																																																																																																																																																																																																																																																																																																																																																																																																																																																																																																																																																																																												
				dr	MINI K VANDANATH			1999-03-20					dwg no						sheet 1 of 1				size																																																																																																																																																																																																																																																																																																																																																																																																																																																																																																																																																																																																																																																																																																																																																																																																																																																																																																																																																																																																																																																																																																																																																																																
				engr	MITHUN PAUL			2016-14-11					C-DSUB-0068						A3																																																																																																																																																																																																																																																																																																																																																																																																																																																																																																																																																																																																																																																																																																																																																																																																																																																																																																																																																																																																																																																																																																																																																																																				
				chr	GREGAR MATHEW			2016-14-11																																																																																																																																																																																																																																																																																																																																																																																																																																																																																																																																																																																																																																																																																																																																																																																																																																																																																																																																																																																																																																																																																																																																																																																															
				appd	BIJU K PAUL			2016-14-11																																																																																																																																																																																																																																																																																																																																																																																																																																																																																																																																																																																																																																																																																																																																																																																																																																																																																																																																																																																																																																																																																																																																																																																															
sheet index		revision		1																																																																																																																																																																																																																																																																																																																																																																																																																																																																																																																																																																																																																																																																																																																																																																																																																																																																																																																																																																																																																																																																																																																																																																																																			

Mouser Electronics

Authorized Distributor

Click to View Pricing, Inventory, Delivery & Lifecycle Information:

[FCI / Amphenol:](#)

[D25S91C6GV4DLF](#) [DDP50P065TXLF](#) [DEPL09P065TXLF](#) [DBP25P064LORLF](#) [DAP15S064LORLF](#)
[DAPO15S064TLF](#) [DAP15P064LORLF](#) [DBP25S064LORLF](#) [DDP50S064LORLF](#) [DCP37P064LORLF](#)
[DEP09S064LORLF](#) [DCP37S064LORLF](#) [DEP09P064LORLF](#) [DDP50P064LORLF](#)