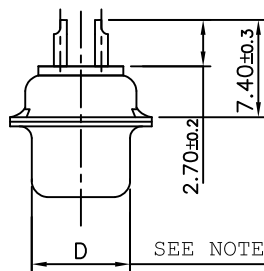
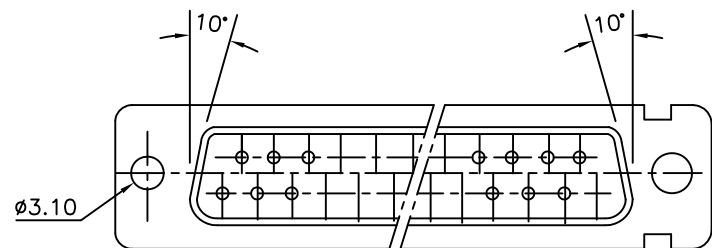
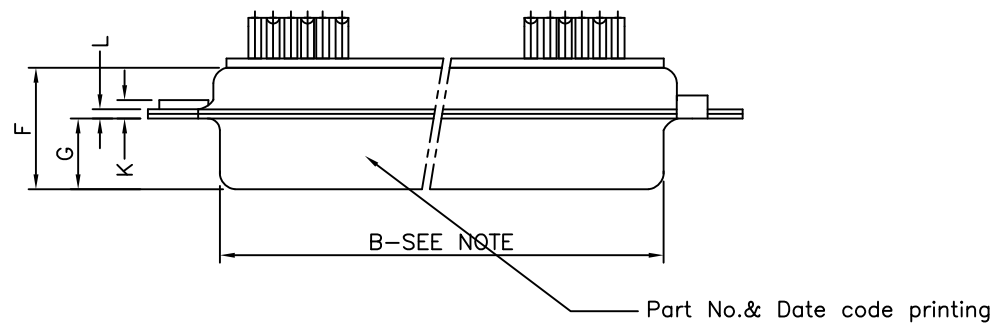


LAY OUT OF 50P CONNECTOR



TECHNICAL SPECIFICATIONS

SHELLS	:	MATT TIN / ZINC PLATED STEEL
INSULATOR MATERIAL	:	SELF EXTINGUISHING THERMOPLASTIC - UL CLASS 94 V0 THE HOUSING WILL WITHSTAND EXPOSURE TO 260-265°C IF WE USE PROTECTIVE ADHESIVE (type Kapton or Teflon) OR PROTECTIVE METALLIC DEVICE
CONTACTS DIA ON ACTIVE AREA	:	Ø1 MM.
CONTACTS MATERIAL	:	COPPER ALLOY
CONTACT PLATING	:	GXT / GOLD OVER NICKEL (ACTIVE ZONE) TIN OVER NICKEL (TERMINATION ZONE)
FOR LEAD FREE PLATING	:	2 µMIN. TIN TOP OVER 1.27 µ MIN.NICKEL UNDER PLATE(ON TERMINATION ZONE)
OPERATING TEMPERATURE	:	-55°C +125°C
OPERATING CURRENT	:	5 A PER CONTACT
CONTACT RESISTANCE	:	≤10m Ω
INSULATION RESISTANCE	:	≥5000M Ω
MAXIMUM VOLTAGE	:	1000 V.r.m.s
MECHANICAL ENDURANCE	:	200 MATINGS (For 64 code) 500 MATINGS (For 65 code).
DAMP HEAT	:	21 DAYS.
WIRE SIZE	:	0.6 MM ² (AWG 20) MAX.



VIEW OF MATING FACE

"This LF product meets European Union Directives and other country regulations as described in GS-22-008"

Packaging as per GS-14-920

Housing will withstand exposure to 260°C peak temp for 3.5sec

ORDERING INFORMATION

SERIES	D B V 25 P 0 64 H T X B XXX LF	LEAD FREE
SHELL SIZE	E,A,B,C,D	SPECIAL CODES
OPTIONS	BLANK-STANDARD F - FLOAT MOUNTING L - CLINCH NUT (M3) O - CLINCH NUT (UNC) V - FEM. SCREW LOCK HEX. (UNC)	INSULATOR COLOUR BLANK- NATURAL B - BLACK
NO.OF CONTACTS	09,15,25,37,50	DIMPLES X-ON MALE CONNECTORS ONLY
CONTACTS	P - PIN S - SOCKET	SHELL PLATING BLANK-ZINC T-STD. TIN over Cu
TERMINATION TYPE	0 - SOLDER BUCKET	OPTIONS BLANK - STD H - WITH SHIELDING TERMINATION FINGERS
		CONTACT PLATING 64 - 200 Mating cycles 65 - 500 Mating cycles

50	P	66.65	52.68	61.11	11.08	14.99	11.09	5.85	55.07	13.31	1.50	1.0
	S	66.65	52.30	61.11	10.62	14.99	11.21	6.05	55.07	13.31	1.10	0.8
37	P	68.94	55.30	63.50	8.23	12.17	11.09	5.85	57.45	10.46	1.50	1.0
	S	68.94	54.71	63.50	7.77	12.17	11.21	6.05	57.45	10.46	1.10	0.8
25	P	52.65	38.84	47.04	8.23	12.17	11.07	5.85	41.02	10.46	1.10	0.8
	S	52.65	38.25	47.04	7.77	12.17	11.21	6.05	41.02	10.46	1.10	0.8
15	P	38.76	25.12	33.32	8.23	12.17	10.99	5.85	27.25	10.46	1.10	0.8
	S	38.76	24.54	33.32	7.77	12.17	11.21	6.05	27.25	10.46	1.10	0.8
09	P	30.43	16.79	24.99	8.23	12.17	10.99	5.85	19.02	10.46	1.10	0.8
	S	30.43	16.21	24.99	7.77	12.17	11.21	6.05	19.02	10.46	1.10	0.8
SHELL SIZE	A	+0,76 0	+0,25 0	±0,12 C	+0,25 D 0	+0,76 E 0	F MAX	+0,15 G 0	+0,51 H 0	+0,51 J 0	±0,2 K	+0,22 L 0
	DIMENSIONS											

NOTE:- 1) INSIDE DIMENSIONS OF THE MALE AND OUTSIDE DIMENSIONS OF THE FEMALE CONNECTOR
2) ALL ACCESSORIES SHOWN IN ASSEMBLY OPTIONS SHOULD BE ORDERED SEPARATELY

ASSEMBLY OPTIONS

<p>FEMALE SCREW LOCK EXTENDED TYPE</p> <p>ORD CODE 8630-01-061</p>	<p>FEMALE SCREW LOCK EXTERNAL THREAD</p> <p>ORD CODE 8630-01LF M3 M3 8630-01ALF M3 4-40 UNC 2A 4-40 UNC 2B 8630-01BLF 4-40 UNC 2A 4-40 UNC 2B 8630-01CLF 4-40 UNC 2A M3</p> <p>ORD-CODE EXTERNAL THREAD INTERNAL THREAD</p>
<p>MALE LEVER LOCK</p> <p>ORD CODE 8630-3427(EABC) ORD CODE 8630-3428(D)</p>	<p>CONNECTOR WITH SPECIAL RIVETTED FEMALE SCREW LOCK</p> <p>ORD CODE 8630-3425(EABC) ORD CODE 8630-3426(D)</p>
<p>CLINCH NUT</p> <p>PREFIX: O - UNC4-40 L - M3</p>	<p>FEMALE LEVER LOCK</p> <p>ORD CODE 8630-3425(EABC) ORD CODE 8630-3426(D)</p>

mat'l. code SEE NOTE 4				surface ISO 1302 ✓	tolerance ISO 406 ISO 1101	projection MM	product family D-SUB			
ltr	ecn no	dr	date	tolerances unless	otherwise specified		title D- SUB SOLDER BUCKET CONNECTOR (WITH ASSEMBLY OPTIONS)			
N	I11-0003	AMR	2011-01-06	angles	linear	.00±0.1				
-	-	-	-			.000±.00X				
H	I07-0175	MRA	2007-12-17	0°±1°		scale -				
J	I08-0131	MRA	2008-10-06	dr	GEORGE.V.JOSEPH	1999-03-20				
K	I09-0121	MRA	2009-07-01	enr	GEORGE.V.JOSEPH	1999-03-20				
L	I09-0140	MRA	2009-07-14	chr	ABHILASH.M.R	2009-07-01				
M	I09-0195	MRA	2009-09-18	appd	SUDHIR.VARMA	2009-07-01				
sheet index	revision sheet	N					dwg no sheet 1 of 1 size 5			
		1					C-DSUB-0064 A3			
							type Product Customer Drawing			

Mouser Electronics

Authorized Distributor

Click to View Pricing, Inventory, Delivery & Lifecycle Information:

[Amphenol:](#)

[DA15P064LF](#) [DA15S064LF](#) [DB25P064LF](#) [DB25S064LF](#) [DC37P064LF](#) [DC37S064LF](#) [DC37S065HTLF](#)
[DD50P064LF](#) [DD50S064LF](#) [DE09P064LF](#) [DE09S064LF](#) [DB25S064BLF](#)