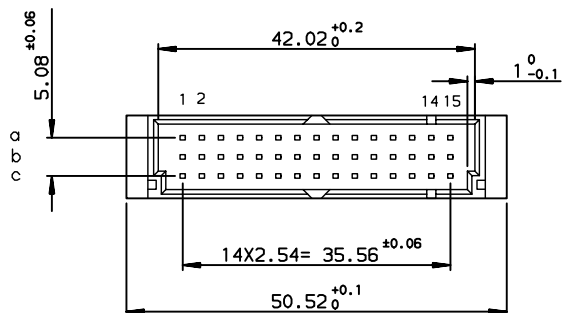
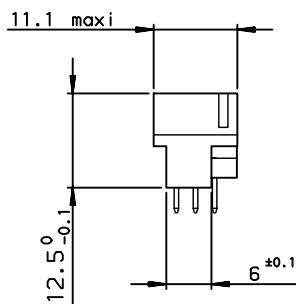
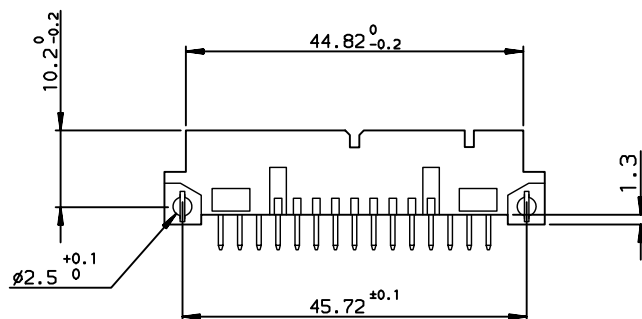


DIMENSIONS

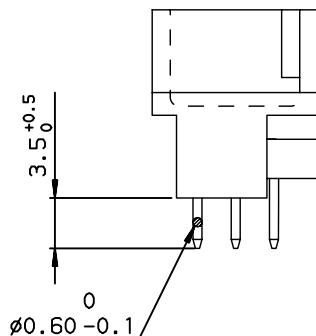


SPECIFICATION 032 or ABLF=
SPECIAL TERMINATION
 Signal Pins = 4.8 0/+0.2

TIN LEAD PART NUMBER
 86093457714755032E1
 86093457714765032E1

LEADFREE PART NUMBER
 86093457714755ABLF
 86093457714765ABLF

TERMINATION



GENERAL CHARACTERISTICS AND ROHS INFORMATION:
 SEE DRAWING C-8609-0000A

European Views

www.fciconnect.com				surface ISO 1302	tolerance std ISO 406 ISO 1101	projection A3	mm
				TOLERANCES UNLESS OTHERWISE SPECIFIED		size	Scale
				ANGULAR	LINEAR	0.X ±0.1	1.5
				0.XX ±0.1	0.XXX ±0.1	ECN	LS07-0131
				0.XX' ±2°	Product family	DIN	Spec ref -
rev	ecn no	dr	date	Dr	ROUILLARD	15/11/91	
c	5244	rou	99/11/12	Eng	ROUILLARD	15/11/91	
A	LS07-031	HLE	07/05/10	Chr	-	-	
-	-	-	-	Appr	-	-	
-	-	-	-				
-	-	-	-				
-	-	-	-				
-	-	-	-				
				title STANDARD MALE 3 ROW			Rev.
				45 CONTACTS FOREM			A
				catalog no	SEE TABLE	customer	sheet 1 of 1

REV F - 2006-04-17

Mouser Electronics

Authorized Distributor

Click to View Pricing, Inventory, Delivery & Lifecycle Information:

[Amphenol:](#)

[86093457714755ABLF](#)