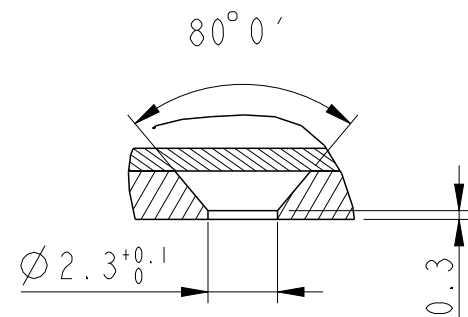
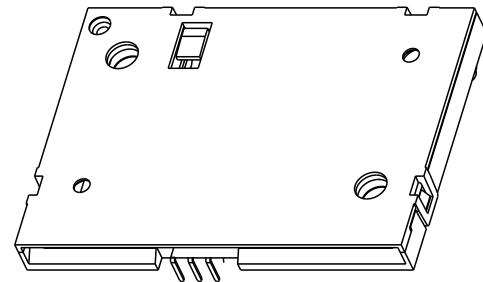


PART NUMBER

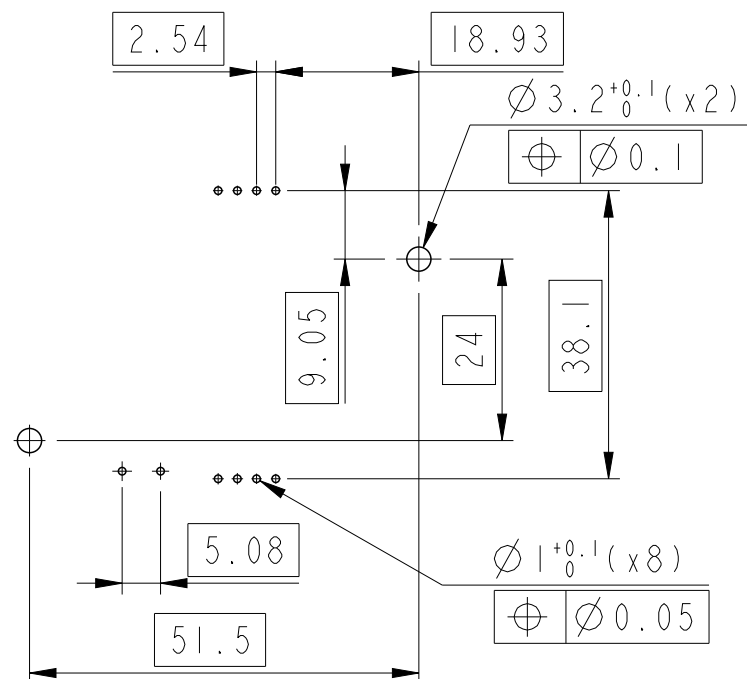
7332E0225S15LF



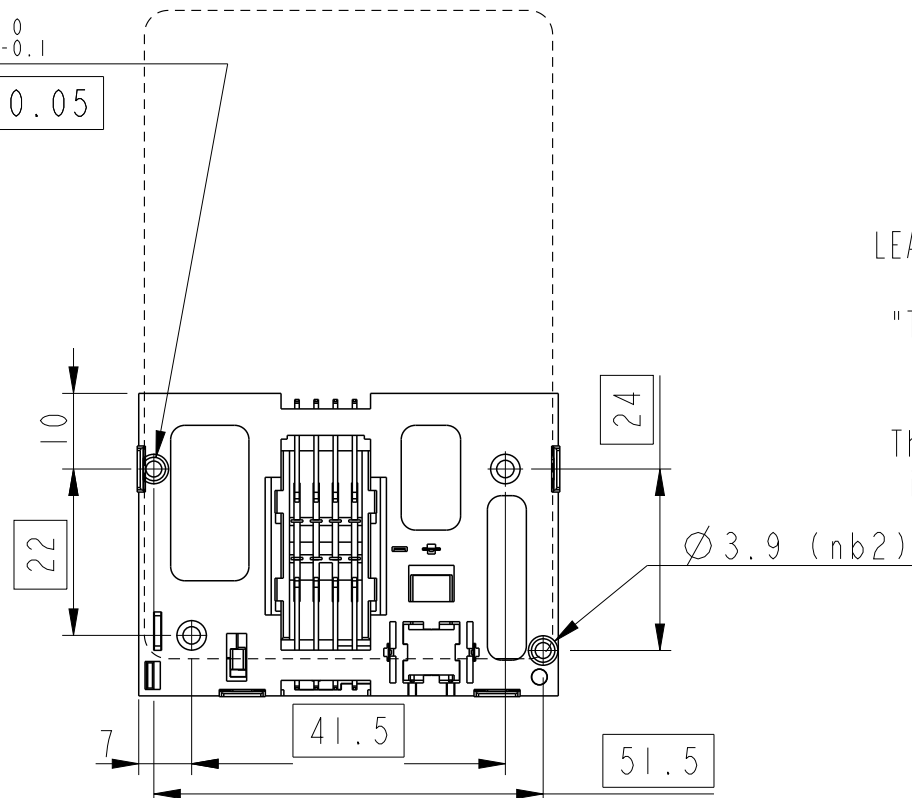
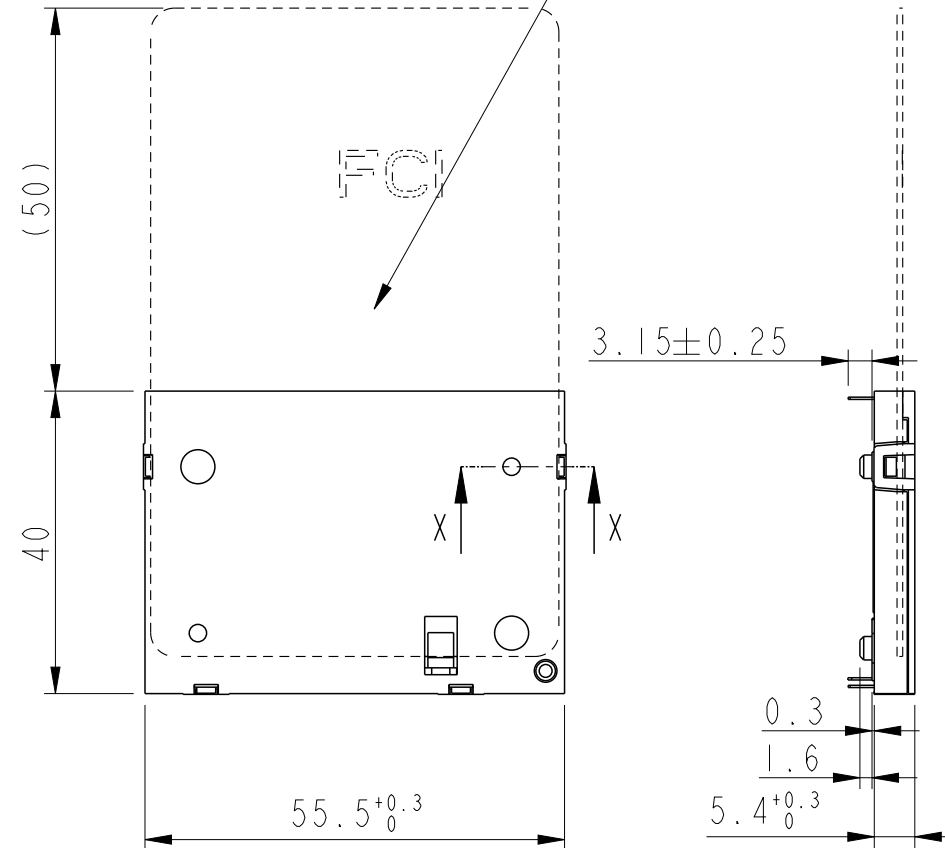
SECTION X-X
SCALE 4:1

$\varnothing 3.1^{+0.1}_0$
 $\varnothing 0.05$

Recommended PCB Layout
(Component side)



SEE NOTES



GENERAL :

High cycle life duration smart card connector with semi landing type contacts mechanism.
Smart card for reference purpose only.

ELECTRICAL PROPERTIES :

Insulation resistance : $> 1000M\Omega$
Dielectric withstanding voltage : $> 750 V_{rms}$
Current carrying capacity : Min 10μA, Max 1A
Contact resistance : $< 100m\Omega$

MECHANICAL PROPERTIES :

Operating force : Insertion : $F < 10N$
Withdrawal : $1 < F < 10N$
Contact normal force : $0.2 < F < 0.5N$ for 0.6mm of deflection
Durability : 50 000 mating cycles

MATERIAL :

Head reader : Pa4/6, Colour Black, Rated UL94V0
Cover : Pa4/6, Colour Grey, Rated UL94V0
Contacts : Copper alloy
Plating : 2.5μm Nickel min. all over
2μm Gold min. or equivalent PdNi on contact area
3μm matte tin min. on solder tails

ENVIRONMENT :

Operating temperature : $-20^{\circ}C / +70^{\circ}C$
Storage temperature : $-40^{\circ}C / +85^{\circ}C$
Climatic condition : UTE 93-421

PACKAGING :

Cavity tray

LEAD FREE VERSION:

"This product meets European Union Directives and other country regulations as described in GS-47-0004"

The housing will withstand exposure to 260°C peak temperature for 10seconds in a convection reflow oven.

General Tolerances	
0 to 10mm:	$\pm 0.1mm$
10 to 30mm:	$\pm 0.15mm$
30 to 60mm:	$\pm 0.2mm$
60 and more:	$\pm 0.3mm$

spec ref		--		dr		P-Mathew Nebu		2011/05/31		projection				size		A3		scale		1:1	
tolerance std		TOLERANCES UNLESS OTHERWISE SPECIFIED		eng		P-Mathew Nebu		2019/07/15						ecn no		ELX-I-30956-1					
ISO 406				chr		-		-													
ISO 1101				appr		Kuriakose, San		2019/09/27		product family		MOBILE I/O		rel level		Released					
surface		linear		0.X		±		Amphenol FCI		title		E02 CARD READER		dwg no		C01MSB26ECE02		rev		D	
				0.XX		±															
				0.XXX		±															
ISO 1302		angular		0°		±°				cat. no.		SEE TABLE		Product - Customer Drw		sheet 1 of 1					

Mouser Electronics

Authorized Distributor

Click to View Pricing, Inventory, Delivery & Lifecycle Information:

[Amphenol:](#)

[7332E0225S15LF](#)